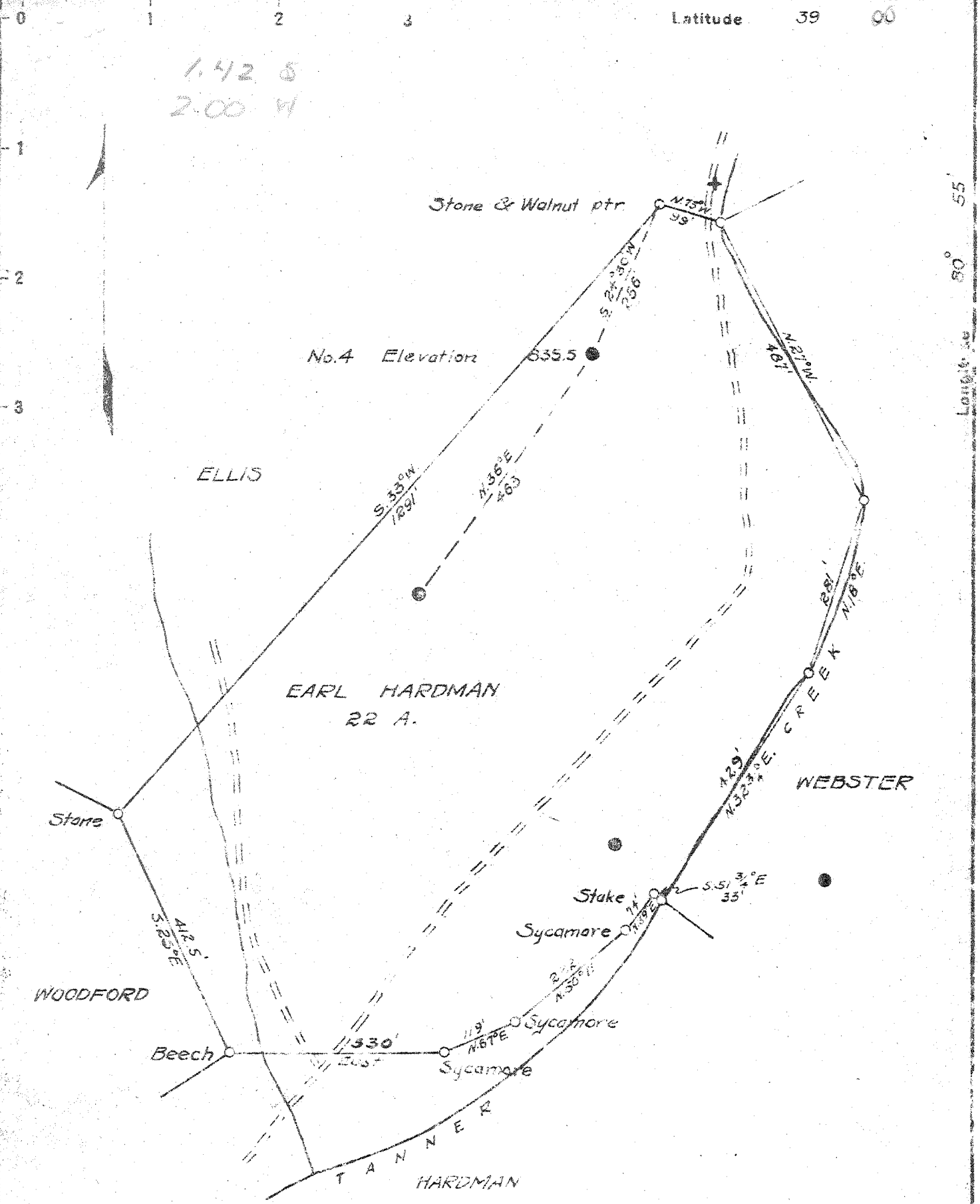


M



1.42 S  
2.00 W

New Location   
 Drill Deeper   
 Abandonment

Company	F. S. DEEM	
Address	HARRISVILLE, W. VA.	
Farm	EARL HARDMAN	
Tract	Acres 22	Lease No.
Well (Farm) No.	4	Serial No.
Elevation (Spirit Level)	635.5	
Quadrangle	GLENVILLE	
County	GILMER	District DE KALB
Engineer	B. F. RINEHART	
Engineer's Registration No.	648	
File No.	Drawing No. 698-DG	
Date	July 22, 1948	
	Scale	1 in. = 200 ft

STATE OF WEST VIRGINIA  
 DEPARTMENT OF MINES  
 OIL AND GAS DIVISION  
 CHARLESTON

WELL LOCATION MAP  
 FILE NO. GIL-274A

+ Denotes location of well on United States Topographic Maps, scale 1 to 62,500, latitude and longitude lines being represented by border lines as shown.

- Denotes one inch spaces on border line of original tracing.

EARL HARDMAN NO. 4 WELL.

Dekalb District, Gilmer County, W. Va.

By F. S. Deem, Harrisville, W. Va.

Abandoned under permit Gil-274-A.

On 22 acres, on Tanner Creek.

Elevation, 835.5' L.

Surface and minerals owned by Earl Hardman, Tanner, W. Va.

Shot July 14, 1922, at 1616-1634'.

10" casing, 125' (pulled); 8 $\frac{1}{4}$ " , 711' ; 6 $\frac{5}{8}$ " , 1567'.

Oil well. Abandonment reported to Dept. of Mines July 22, 1948.

Record to RCT from Mrs. Griffith Sept. 3, 1948. Old File No. 408.

	Top.	Bottom.
Little Dunkard Sand	680	- 760
Big Dunkard Sand	764	- 800
Gas Sand	890	- 915
1st Salt Sand	1000	- 1121
2nd Salt Sand	1211	- 1304
Stray sand	1545	- 1581
Maxton Sand (gas, 1614'; oil, 1614-1634')	1586	- 1635
Total depth		1652



STATE OF WEST VIRGINIA  
DEPARTMENT OF MINES  
OIL AND GAS DIVISION

408

WELL RECORD

Permit No. 274-A Oil or Gas Well Oil  
(KIND)

Company F. S. Deem  
Address Harrisville, W.Va.  
Farm Earl Hardman Acres 22  
Location (waters) Tanner Creek  
Well No. 4 Elev. 835.5  
District De Kalb County Gilmer  
The surface of tract is owned in fee by Earl Hardman  
Address Tanner, W.Va.  
Mineral rights are owned by Same  
Address \_\_\_\_\_

Casing and Tubing	Used in Drilling	Left in Well	Packers
Size			
16			Kind of Packer
13			
10	125		Size of
8 1/4	711	711	
6 5/8	1567	1567	Depth set
5 3/16			
3			Perf. top
2			Perf. bottom
Liners Used			Perf. top
			Perf. bottom

Drilling commenced \_\_\_\_\_  
Drilling completed \_\_\_\_\_  
Date Shot 7-14-22 From 1616 To 1634  
With \_\_\_\_\_  
Open Flow \_\_\_\_\_ /10ths Water in \_\_\_\_\_ Inch  
\_\_\_\_\_ /10ths Merc. in \_\_\_\_\_ Inch  
Volume \_\_\_\_\_ Cu. Ft.  
Rock Pressure \_\_\_\_\_ lbs. \_\_\_\_\_ hrs.  
Oil \_\_\_\_\_ bbls., 1st 24 hrs.  
Fresh water \_\_\_\_\_ feet \_\_\_\_\_ feet  
Salt water \_\_\_\_\_ feet \_\_\_\_\_ feet

CASING CEMENTED \_\_\_\_\_ SIZE \_\_\_\_\_ No. Ft. \_\_\_\_\_ Date \_\_\_\_\_  
COAL WAS ENCOUNTERED AT \_\_\_\_\_ FEET \_\_\_\_\_ INCHES  
\_\_\_\_\_ FEET \_\_\_\_\_ INCHES \_\_\_\_\_ FEET \_\_\_\_\_ INCHES  
\_\_\_\_\_ FEET \_\_\_\_\_ INCHES \_\_\_\_\_ FEET \_\_\_\_\_ INCHES

Formation	Color	Hard or Soft	Top	Bottom	Oil, Gas or Water	Depth Found	Remarks
Little Dunkard			630	760			
Big Dunkard			764	800			
Gas Sand			890	915			
1st. Salt Sand			1000	1121			
2nd Salt Sand			1211	1304			
Stray Sand			1545	1581			
Maxton			1586	1635			
Total Depth				1652	oil gas	1614-1634 1614	

