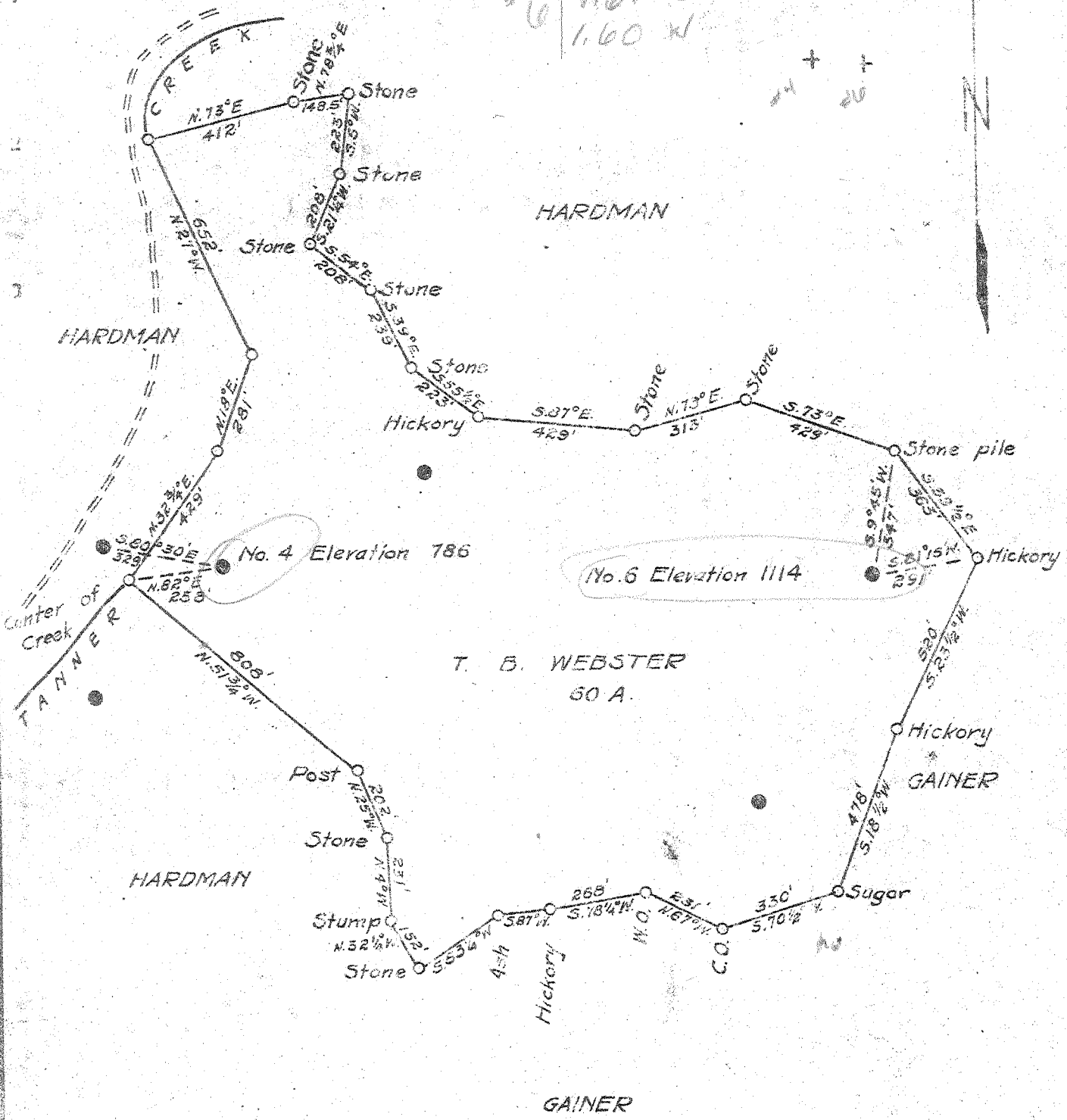


Latitude 39° 00'

Longitude 80° 55'

#4 1.64 S  
1.95 W  
#6 1.67 S  
1.60 W



- New Location
- Drill Deeper
- Abandonment

Company	F. S. DEEM	
Address	HARRISVILLE, W. VA.	
Farm	T. B. WEBSTER	
Tract	Acres 50	Lease No.
Well (Farm) No.	4 & 3	Serial No.
Elevation (Spirit Level)	786 & 1114	
Quadrangle	GLENNVILLE	
County	GILMER	District DE KALB
Engineer	B. F. RINEHART	
Engineer's Registration No.	648	
File No.	Drawing No. 696-DG	
Date	July 20, 1948	Scale 1 in. = 400 ft

STATE OF WEST VIRGINIA  
DEPARTMENT OF MINES  
OIL AND GAS DIVISION  
CHARLESTON

WELL LOCATION MAP  
FILE NO. GIL-275-A-#4  
GIL-278-A-#6

+ Denotes location of well on United States Topographic Maps, scale 1 to 62,500, latitude and longitude lines being represented by border lines as shown.  
- Denotes one inch spaces on border line of original tracing.

T. B. WEBSTER NO. 4 WELL.

Dekalb District, Gilmer County, W. Va.

By F. S. Deem, Harrisville, W. Va.

Abandoned under permit Gil-275-A.

On 60 acres, on Tanner Creek.

Elevation, 786' L.

Surface and minerals owned by T. B. Webster, Glenville, W. Va.

Shot April 13, 1923, at 1555-1575'.

10" casing, 291'; 8 1/2", 810'; 6 3/8", 1554'; all left in.

Oil well. Abandonment reported to Dept. of Mines July 20, 1948.

Record to RCT from Mrs. Griffith Sept. 3, 1948. Old File No. 415.

	Top.	Bottom.
1st Salt Sand	995	1065
2nd Salt Sand	1102	1250
Sand	1300	1350
Stray sand	1415	1450
Maxton Sand (gas, 1550-1557') (oil, 1559-1567')	1524	1575
Total depth		1575



415

STATE OF WEST VIRGINIA  
DEPARTMENT OF MINES  
OIL AND GAS DIVISION

WELL RECORD

Permit No. 735-A

Oil or Gas Well Oil  
(KIND)

Company F. S. Deem  
Address Harrisville, W. Va.  
Farm T. E. Webster, Acres 60  
Location (waters) Tanner Creek  
Well No. 4 Elev. 736  
District De Kalb County Gilmer  
The surface of tract is owned in fee by T. E. Webster,  
Address Glennville, W. Va.  
Mineral rights are owned by Same  
Address \_\_\_\_\_

Drilling commenced \_\_\_\_\_  
Drilling completed \_\_\_\_\_  
Date Shot 4-13-23 From 1555 To 1575  
With \_\_\_\_\_  
Open Flow /10ths Water in \_\_\_\_\_ Inch  
/10ths Merc. in \_\_\_\_\_ Inch  
Volume \_\_\_\_\_ Cu. Ft.  
Rock Pressure \_\_\_\_\_ lbs. \_\_\_\_\_ hrs.  
Oil \_\_\_\_\_ bbls., 1st 24 hrs.  
Fresh water \_\_\_\_\_ feet \_\_\_\_\_ feet  
Salt water \_\_\_\_\_ feet \_\_\_\_\_ feet

Casing and Tubing	Used in Drilling	Left in Well	Packers
Size			Kind of Packer
16			
13			
10	291	291	Size of
8 1/4	810	810	
6 5/8	1554	1554	Depth set
5 3/16			
3			Perf. top
2			Perf. bottom
Liners Used			Perf. top
			Perf. bottom

CASING CEMENTED \_\_\_\_\_ SIZE \_\_\_\_\_ No. Ft. \_\_\_\_\_ Date \_\_\_\_\_

COAL WAS ENCOUNTERED AT \_\_\_\_\_ FEET \_\_\_\_\_ INCHES  
 \_\_\_\_\_ FEET \_\_\_\_\_ INCHES \_\_\_\_\_ FEET \_\_\_\_\_ INCHES  
 \_\_\_\_\_ FEET \_\_\_\_\_ INCHES \_\_\_\_\_ FEET \_\_\_\_\_ INCHES

Formation	Color	Hard or Soft	Top	Bottom	Oil, Gas or Water	Depth Found	Remarks
1st Salt Sand			995	1065			
2nd Salt Sand			1102	1250			
Sand			1300	1350			
Stray Sand			1415	1450			
Maxton			1524	1575			
					Gas	1550-1557	
					Oil	1559-1567	
Total Depth				1575			

