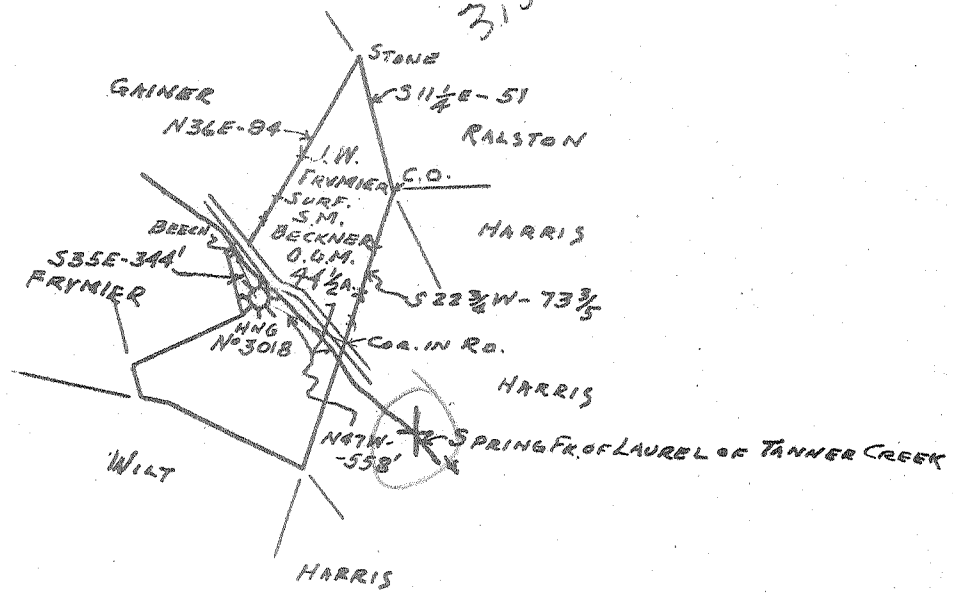


Latitude 39° 05'

Longitude 80° 55'

5110 S  
3.47 W

5.15 S  
3.52 W



New Location...   
 Drill Deeper.....   
 Abandonment.....

Company GLEN W. ROBERTS  
 Address ELIZABETH, WEST VIRGINIA  
 Farm J.W. FRYMIER-SURF. - S.M. BECKNER-ROY  
 (W.D. MOUSE)  
 Tract 44 1/2 Acres Lease No. \_\_\_\_\_  
 Well (Farm) No. ONE Serial No. HOPE 3018  
 Elevation (Spirit Level) 848 FT.  
 Quadrangle HOLDBROOK  
 County GILMER District DEKALA  
 Engineer Glen W. Roberts  
 Engineer's Registration No. 860  
 File No. \_\_\_\_\_ Drawing No. \_\_\_\_\_  
 Date 6-6-58 Scale 1 IN = 80 POLES

STATE OF WEST VIRGINIA  
 DEPARTMENT OF MINES  
 OIL AND GAS DIVISION  
 CHARLESTON

**WELL LOCATION MAP**  
 FILE NO. GIL-429-A

+ Denotes location of well on United States Topographic Maps, scale 1 to 62,500, latitude and longitude lines being represented by border lines as shown.  
 - Denotes one inch spaces on border line of original tracing.

"IMPERIAL" TRACING CLOTH.



536

STATE OF WEST VIRGINIA  
DEPARTMENT OF MINES  
OIL AND GAS DIVISION

Quadrangle Holbrook

Permit No. 499A

WELL RECORD

~~Oil or Gas Well~~ \_\_\_\_\_  
(KIND)

Company Glen W. Roberts  
Address Elizabethtown, W. Va.  
Farm J. W. Frymier - Surf. Acres 44 1/2  
Location (waters) \_\_\_\_\_  
Well No. Hope Nat. Gas Co. 3018 Elev. 848  
District DeKalb County Gilmer  
The surface of tract is owned in fee by J. W. Frymier  
Address \_\_\_\_\_  
Mineral rights are owned by S. M. Beckner  
W. D. MOUSE Address ST. MARYS, OHIO  
Drilling commenced June 12, 1913  
Drilling completed Sept. 19, 1913  
Date Shot 9-25-13 From 1/4 IN To \_\_\_\_\_  
With 80 QTS.  
Open Flow \_\_\_\_\_ /10ths Water in \_\_\_\_\_ Inch  
\_\_\_\_\_ /10ths Merc. in \_\_\_\_\_ Inch  
Volume \_\_\_\_\_ Cu. Ft.  
Rock Pressure \_\_\_\_\_ lbs. \_\_\_\_\_ hrs.  
Oil \_\_\_\_\_ bbls., 1st 24 hrs.  
WELL ACIDIZED \_\_\_\_\_  
WELL FRACTURED \_\_\_\_\_

Casing and Tubing	Used in Drilling	Left in Well	Packers
Size			Kind of Packer
16			
13			
10	165		Size of
8 1/4	854' 5"		
6 5/8	1733	1733	Depth set
5 3/16			
3			Perf. top
2	1856' 3"	1856' 3"	Perf. bottom
Liners Used			Perf. top
			Perf. bottom

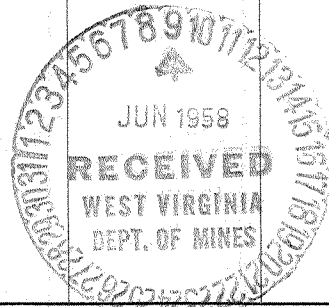
CASING CEMENTED \_\_\_\_\_ SIZE \_\_\_\_\_ No. Ft. \_\_\_\_\_ Date \_\_\_\_\_  
COAL WAS ENCOUNTERED AT \_\_\_\_\_ FEET \_\_\_\_\_ INCHES  
\_\_\_\_\_ FEET \_\_\_\_\_ INCHES FEET \_\_\_\_\_ INCHES  
\_\_\_\_\_ FEET \_\_\_\_\_ INCHES FEET \_\_\_\_\_ INCHES

RESULT AFTER TREATMENT

ROCK PRESSURE AFTER TREATMENT

Fresh Water \_\_\_\_\_ Feet Salt Water \_\_\_\_\_ Feet

Formation	Color	Hard or Soft	Top	Bottom	Oil, Gas or Water	Depth	Remarks
Dunkard Sand			785	805			
See Sand			1060	1195			
Salt Sand			1390	1483	Gas	1397	
Maxon Sand			1611	1651			
Lime			1671	1686			
Lime			1696	1782			
njun Sand			1782	1855	Gas	1768 1768	
Berea Sand			2177	2190			
				2297 TD			
Filled				1856			



DEC 20 1958

(over)

