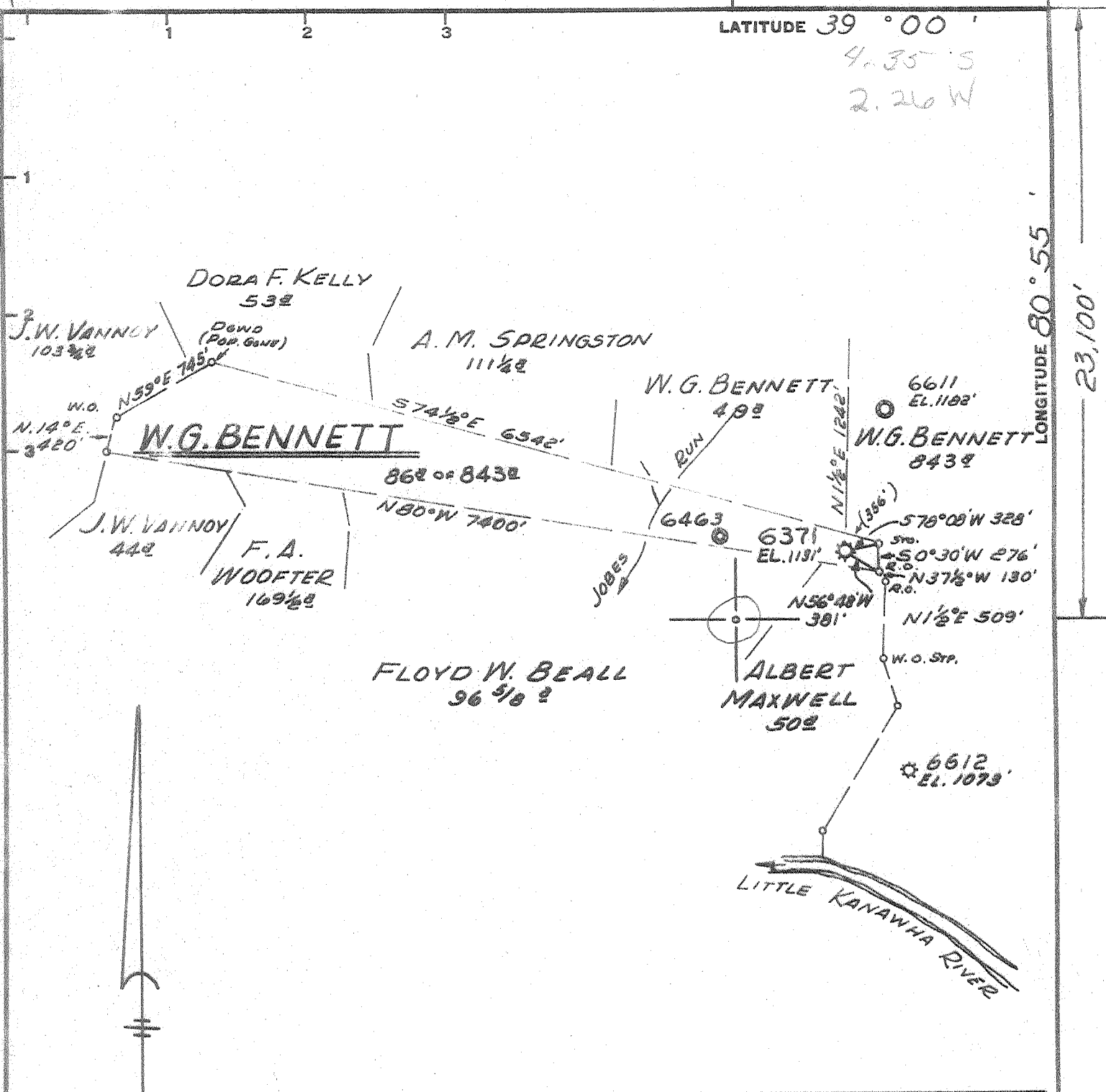


LATITUDE 39° 00'  
4.35' S  
2.26 W



New Location   
 Drill Deeper   
 Abandonment

F.B. 330 Pg. 19

10-10-67 MAP SHEET 87 535-W20 FB. 1425 Pg. 15

Company CONSOLIDATED GAS SUPPLY CORP.  
 Address CLARKSBURG, W. VA.  
 Farm W.G. BENNETT  
 Tract \_\_\_\_\_ Acres 843± Lease No. 28039  
 Well (Farm) No. \_\_\_\_\_ Serial No. 6371  
 Elevation (Spirit Level) 1131'  
 Quadrangle GLENVILLE NW  
 County GILMER District DEKALB  
 Engineer Jackson M. Jarvis  
 Engineer's Registration No. 2397  
 File No. \_\_\_\_\_ Drawing No. \_\_\_\_\_  
 Date 12-30-66 Scale 1" = 200'

STATE OF WEST VIRGINIA  
 DEPARTMENT OF MINES  
 OIL AND GAS DIVISION  
 CHARLESTON

WELL LOCATION MAP  
 FILE NO. CIL-481-A

+ Denotes location of well on United States Topographic Maps, scale 1 to 62,500, latitude and longitude lines being represented by border lines as shown.  
 - Denotes one inch spaces on border line of original tracing.