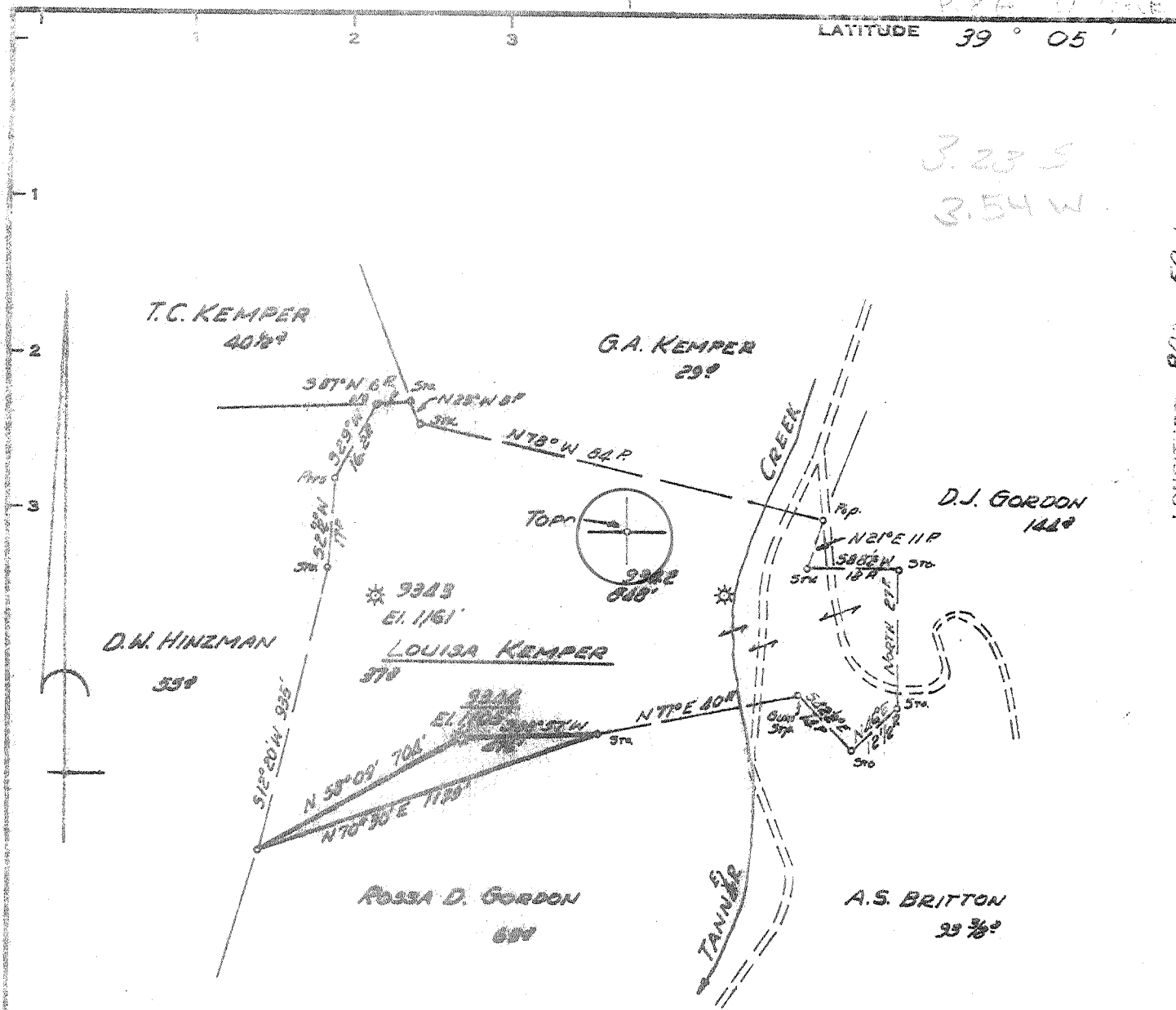


3.23 S
3.54 W



LONGITUDE 80° 50'

Minimum Error of Closure 1' IN 200'
 Source of Elevation ROAD FORK MOUTH OF LAURAL CREEK
ELEV. 886'
 "I, the undersigned, hereby certify that this map is correct to the best of my knowledge and belief and shows all the information required by paragraph 6 of the rules and regulations of the oil and gas section of the mining laws of West Virginia."

New Location
 Drill Deeper
 Abandonment 10/2/73

MAP SHEET 82-528N17 F.B. 924 P. 15-16

Company CONSOLIDATED GAS SUPPLY CORP
 Address CLARKSBURG W. VA.
 Farm LOUISA KEMPER
 Tract _____ Acres 37 Lease No. 61074
 Well (Farm) No. _____ Serial No. 2344
 Elevation (Spirit Level) 1105'
 Quadrangle HOLBROOK SC
 County GILMER District TROY
 Engineer Jackson M. Jarvis
 Engineer's Registration No. 8397
 File No. _____ Drawing No. _____
 Date 10-2-73 Scale 1" = 30 FEET

STATE OF WEST VIRGINIA
 DEPARTMENT OF MINES
 OIL AND GAS DIVISION
 CHARLESTON

WELL LOCATION MAP
 FILE NO. Gil - 494-A

+ Denotes location of well on United States Topographic Maps, scale 1 to 62,500, latitude and longitude lines being represented by border lines as shown.
 — Denotes one inch spaces on border line of original tracing.
47-021