

NELLIE BISHOP'S HRS.

149<sup>a</sup>

N<sup>2</sup>1  
ELV. 1113'

LENA MAYS

- Redrill.....
- New Location
- Drill Deeper.....
- Abandonment.....

SOURCE OF ELV. - AB'D. WELL ELEV. 1096'

I, the undersigned, hereby certify that this map is correct to the best of my knowledge and belief and shows all the information required by paragraph 6 of the rules and regulations of the oil and gas section of the mining laws of West Virginia.

issued 12-18-73

Minimum accuracy, one part in 200

Company ST. CLAIR OIL CO. 219 E. Main St.  
 Address ST. CLAIRSVILLE, OHIO 43960  
 Farm NELLIE BISHOP'S HRS.  
 Tract \_\_\_\_\_ Acres 149 Lease No. \_\_\_\_\_  
 Well (Farm) No. 3 Serial No. 2  
 Elevation (Spirit Level) 1262.8'  
 Quadrangle WESTON ~~SR~~ <sup>EC</sup>  
 County HARRISON District ELK  
 Engineer James J. Jeffers  
 Engineer's Registration No. 1084  
 File No. 207/160 Drawing No. \_\_\_\_\_  
 Date 6-9-64 Scale 1" = 500'

STATE OF WEST VIRGINIA  
 DEPARTMENT OF MINES  
 OIL AND GAS DIVISION  
 CHARLESTON

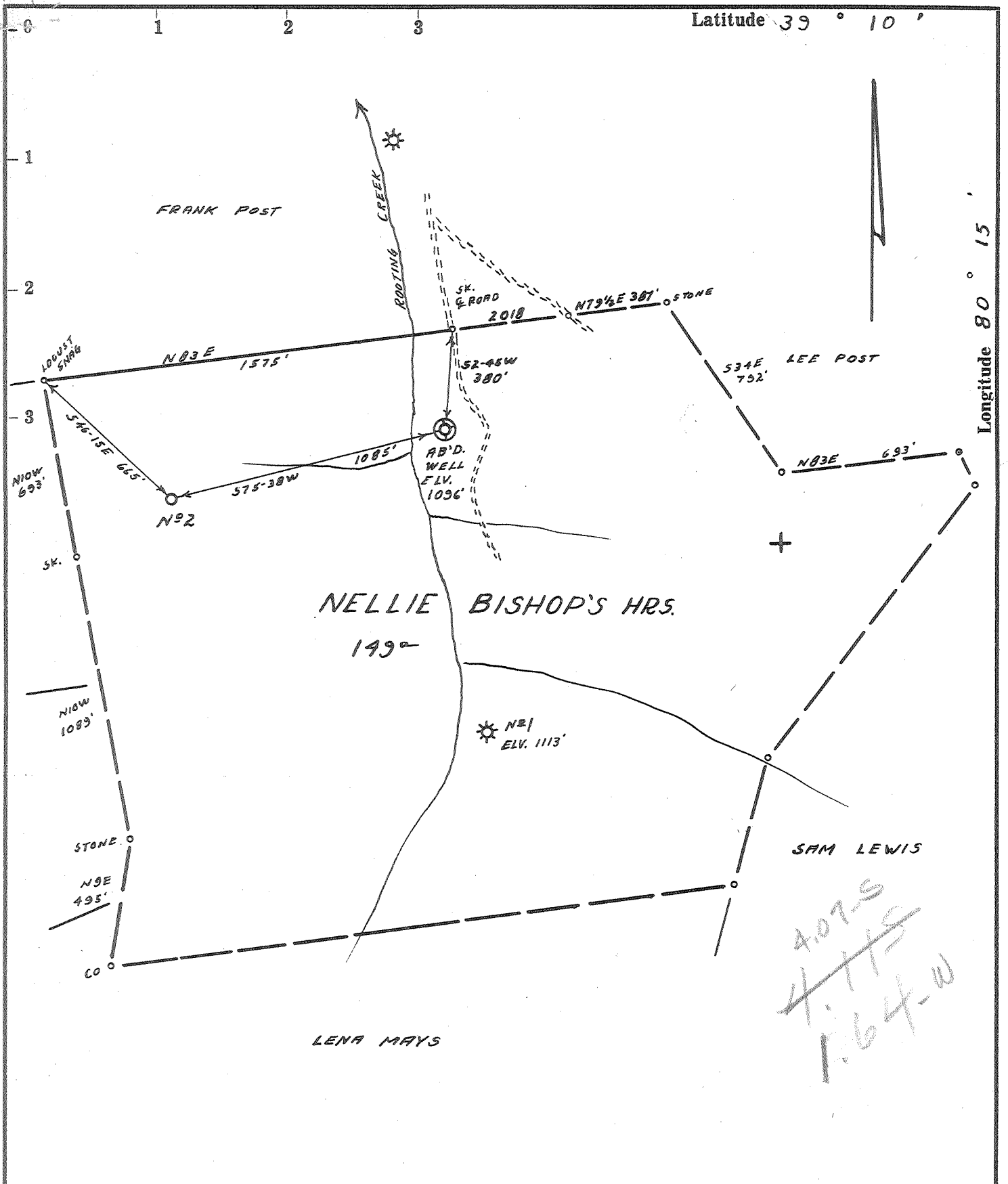
WELL LOCATION MAP  
 FILE NO. HAR-351-P

+ Denotes location of well on United States Topographic Maps, scale 1 to 62,500, latitude and longitude lines being represented by border lines as shown.

— Denotes one inch spaces on border line of original tracing.

R.D.M.<sup>c</sup>

JAN 11 1974



- Redrill.....
- New Location.
- Drill Deeper.....
- Abandonment.....

SOURCE OF ELV. - AB'D. WELL ELV. 1096'

I, the undersigned, hereby certify that this map is correct to the best of my knowledge and belief and shows all the information required by paragraph 6 of the rules and regulations of the oil and gas section of the mining laws of West Virginia.

Minimum accuracy, one part in 200

Company ST. CLAIR OIL CO.  
 Address ST. CLAIRSVILLE, OHIO  
 Farm NELLIE BISHOP'S HRS.  
 Tract \_\_\_\_\_ Acres 149 Lease No. \_\_\_\_\_  
 Well (Farm) No. (3) Serial No. (2)  
 Elevation (Spirit Level) 1262.8'  
 Quadrangle WESTON SE2<sup>1/4</sup> EC  
 County HARRISON District ELK  
 Engineer James J. Jeffers  
 Engineer's Registration No. 1084  
 File No. 207/160 Drawing No. \_\_\_\_\_  
 Date 6-4-64 Scale 1" = 500'

STATE OF WEST VIRGINIA  
 DEPARTMENT OF MINES  
 OIL AND GAS DIVISION  
 CHARLESTON

**WELL LOCATION MAP**  
 FILE NO. FIAR-351-P

*not plugged*  
 + Denotes location of well on United States Topographic Maps, scale 1 to 62,500, latitude and longitude lines being represented by border lines as shown.  
 — Denotes one inch spaces on border line of original tracing.

RDM<sup>c</sup>

DEPARTMENT OF MINES  
OIL AND GAS DIVISION 6

Quadrangle Weston S-E X

Permit No. HAB-351

WELL RECORD

Oil or Gas Well Gas

Company St. Clair Oil Company  
Address 219 East Main St., St. Clairsville, Ohio  
Farm Nellie Bishop heirs Acres 149  
Location (waters) Rooting Creek  
Well No. One OSW 31259 Elev. 1262.8  
District Elk County Harrison

The surface of tract is owned in fee by R. L. Bishop, et al.  
Nutter Foot, W. Va. Address 307 Ohio St.,

Mineral rights are owned by same as above

Address \_\_\_\_\_

Drilling commenced July 2, 1964

Drilling completed Sept. 15, 1964

Date Shot No From \_\_\_\_\_ To \_\_\_\_\_

With \_\_\_\_\_

Open Flow /10ths Water in \_\_\_\_\_ Inch

/10ths Merc. in \_\_\_\_\_ Inch

Volume 57,000 Cu. Ft.

Rock Pressure \_\_\_\_\_ lbs. \_\_\_\_\_ hrs.

Oil \_\_\_\_\_ bbls., 1st 24 hrs.

WELL ACIDIZED No

WELL FRACTURED Yes 54,000 lb. 20-40 1200 bbl. water 400 gal. acid 25 gal. detergent

RESULT AFTER TREATMENT 2,000,000

ROCK PRESSURE AFTER TREATMENT 1800

Fresh Water 85 Feet 240-270-535

Salt Water 596-875-1976-1984 Feet

| Casing and Tubing | Used in Drilling | Left in Well | Packers                    |
|-------------------|------------------|--------------|----------------------------|
| Size              |                  |              | Kind of Packer <u>none</u> |
| 16                |                  |              |                            |
| 18                | <u>19</u>        |              |                            |
| 10                | <u>455</u>       | <u>455</u>   | Size of _____              |
| 8 1/2             | <u>1425</u>      |              |                            |
| 6 5/8             | <u>2100</u>      |              | Depth set _____            |
| 5 3/16            |                  |              |                            |
| 3 1/2             |                  | <u>4569</u>  | Perf. top _____            |
| 2                 |                  |              | Perf. bottom _____         |
| Liners Used       |                  |              | Perf. top _____            |
|                   |                  |              | Perf. bottom _____         |

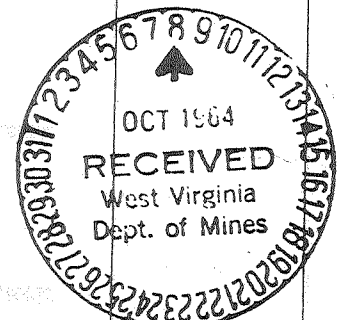
CASING CEMENTED 4 1/2 SIZE 4569 No. Ft. 9-15-64 Date  
100 sks. cement 1000 lbs. bentonite

COAL WAS ENCOUNTERED AT none FEET \_\_\_\_\_ INCHES

\_\_\_\_\_ FEET \_\_\_\_\_ INCHES \_\_\_\_\_ FEET \_\_\_\_\_ INCHES

\_\_\_\_\_ FEET \_\_\_\_\_ INCHES \_\_\_\_\_ FEET \_\_\_\_\_ INCHES

| Formation   | Color | Hard or Soft | Top | Bottom | Oil, Gas or Water | Depth | Remarks      |
|-------------|-------|--------------|-----|--------|-------------------|-------|--------------|
| Clay        |       |              | 0   | 8      |                   |       |              |
| Slate       |       |              | 8   | 40     |                   |       |              |
| Lime        |       |              | 40  | 50     |                   |       |              |
| Slate       |       |              | 50  | 65     |                   |       |              |
| Lime        |       |              | 65  | 95     | Water             | 85'   | show         |
| Red Rock    |       |              | 95  | 117    |                   |       |              |
| Sand        |       |              | 117 | 130    |                   |       |              |
| Red Rock    |       |              | 130 | 210    |                   |       |              |
| Slate       | White |              | 210 | 235    |                   |       |              |
| Sand        |       |              | 235 | 280    | Water             | 240'  | 2 bauler hr. |
| Slate       |       |              | 280 | 310    |                   |       |              |
| Lime        |       |              | 310 | 347    |                   |       |              |
| Slate       |       |              | 347 | 367    |                   |       |              |
| Lime        |       |              | 367 | 389    | Water             | 270'  | Ex. & Carry  |
| Red Rock    |       |              | 389 | 406    |                   |       |              |
| Slate       |       |              | 406 | 423    |                   |       |              |
| Britty Lime |       |              | 423 | 435    |                   |       |              |
| Slate       |       |              | 435 | 472    |                   |       |              |
| Britty Lime |       |              | 472 | 515    |                   |       |              |
| Sand        |       |              | 515 | 540    | Water             | 535'  | show         |
| Lime        |       |              | 540 | 586    |                   |       |              |
| Sand        |       |              | 586 | 610    | Water             | 596'  | Show         |
| Lime        |       |              | 610 | 670    |                   |       |              |
| Slate       |       |              | 670 | 686    |                   |       |              |
| Big Lime    |       |              | 686 | 745    |                   |       |              |
| Slate       | Black |              | 745 | 775    |                   |       |              |
| Shells      |       |              | 775 | 792    |                   |       |              |



| Formation     | Color | Hard or Soft | Top<br>6 | Bottom | Oil, Gas or Water | Depth Found    | Remarks          |
|---------------|-------|--------------|----------|--------|-------------------|----------------|------------------|
| late          | Black |              | 792      | 810    |                   |                |                  |
| fine          |       |              | 810      | 825    |                   |                |                  |
| late          | Black |              | 825      | 845    |                   |                |                  |
| late          | White |              | 845      | 865    |                   |                |                  |
| late          |       |              | 865      | 875    | Water             | 875-885'       | Show 3 bailers   |
| and           |       |              | 875      | 935    |                   |                | ff.              |
| late          | Black |              | 935      | 957    |                   |                |                  |
| late          |       |              | 957      | 983    |                   |                |                  |
| and           |       |              | 983      | 1039   |                   |                |                  |
| late          |       |              | 1039     | 1055   |                   |                |                  |
| and           |       |              | 1055     | 1128   |                   |                |                  |
| late          | Black |              | 1128     | 1206   |                   |                |                  |
| and           |       |              | 1206     | 1290   |                   |                |                  |
| critty Lime   |       |              | 1290     | 1320   |                   |                |                  |
| red Rock      |       |              | 1320     | 1425   |                   |                |                  |
| lime          |       |              | 1425     | 1465   |                   |                |                  |
| critty Lime   | maxon |              | 1465     | 1510   |                   |                |                  |
| lime          | R4d   |              | 1510     | 1566   |                   |                |                  |
| late          |       |              | 1566     | 1580   |                   |                |                  |
| little Lime   |       |              | 1580     | 1595   |                   |                |                  |
| late          |       |              | 1595     | 1627   |                   |                |                  |
| big Lime      |       |              | 1627     | 1694   |                   |                |                  |
| anjum Sand    |       |              | 1694     | 1788   |                   |                |                  |
| lime          |       |              | 1788     | 1810   |                   |                |                  |
| and           |       |              | 1810     | 1824   |                   |                |                  |
| lime          |       |              | 1824     | 1898   | Water             | 1976-1984      | 5 bailers per h: |
| late          |       |              | 1898     | 1950   |                   |                |                  |
| sand          |       |              | 1950     | 2110   | Oil               | 1954-1959-1965 | show             |
| late          |       |              | 2110     | 2124   | Oil               | 2037'          | show             |
| and           |       |              | 2124     | 2190   |                   |                |                  |
| late          |       |              | 2190     | 2193   |                   |                |                  |
| and           |       |              | 2193     | 2229   |                   |                |                  |
| red Rock      |       |              | 2229     | 2240   |                   |                |                  |
| critty lime   |       |              | 2240     | 2262   |                   |                |                  |
| sand          |       |              | 2262     | 2264   |                   |                |                  |
| lime          |       |              | 2264     | 2303   |                   |                |                  |
| red Rock      |       |              | 2303     | 2368   |                   |                |                  |
| lime          |       |              | 2367     | 2450   | Oil               | 2394'          | show             |
| late          |       |              | 2450     | 2506   | Oil               | 2402'          | show             |
| 4th Sand      |       |              | 2506     | 2526   |                   |                |                  |
| late          |       |              | 2526     | 2596   |                   |                |                  |
| 5th Sand      |       |              | 2596     | 2610   |                   |                |                  |
| late          |       |              | 2610     | 2753   |                   |                |                  |
| critty Lime   |       |              | 2753     | 2780   |                   |                |                  |
| late          |       |              | 2780     | 2868   |                   |                |                  |
| lime          |       |              | 2868     | 3910   |                   |                |                  |
| late & Shells |       |              | 3910     | 4500   |                   |                |                  |
| enson         |       |              | 4500     | 4508   | Gas               | 4500-4506      | 57,000 Nat.      |
| late          |       |              | 4508     | 4569   | Water             |                | 30/10 1"         |
|               |       |              | 4569     | T.D.   |                   |                |                  |

Date October 7, 1964

APPROVED St. Clair Oil Company, Owner

By Harry L. Brown  
(Title) Sec'y. & Treas.