

GEO. ALEXANDER
1802

D. D. UNDERWOOD
100 1/22

8141
EL. 1119'
NAR 565

W. W. WOLFE
1202

L. J. AYERS
1252

G. C. & L. L.
SMITH
288 1/22

8142
EL. 1194'

J. W. WILLIAMS
2002

Minimum Error of Closure 1" IN 200'
 Source of Elevation CONSOLIDATED GAS SUPPLY CORR
WELL N° 8179 ELEVATION 1376'
 "I, the undersigned, hereby certify that this map is correct to the best of my knowledge and belief and shows all the information required by paragraph 6 of the rules and regulations of the oil and gas section of the mining laws of West Virginia."

- New Location
- Drill Deeper
- Abandonment

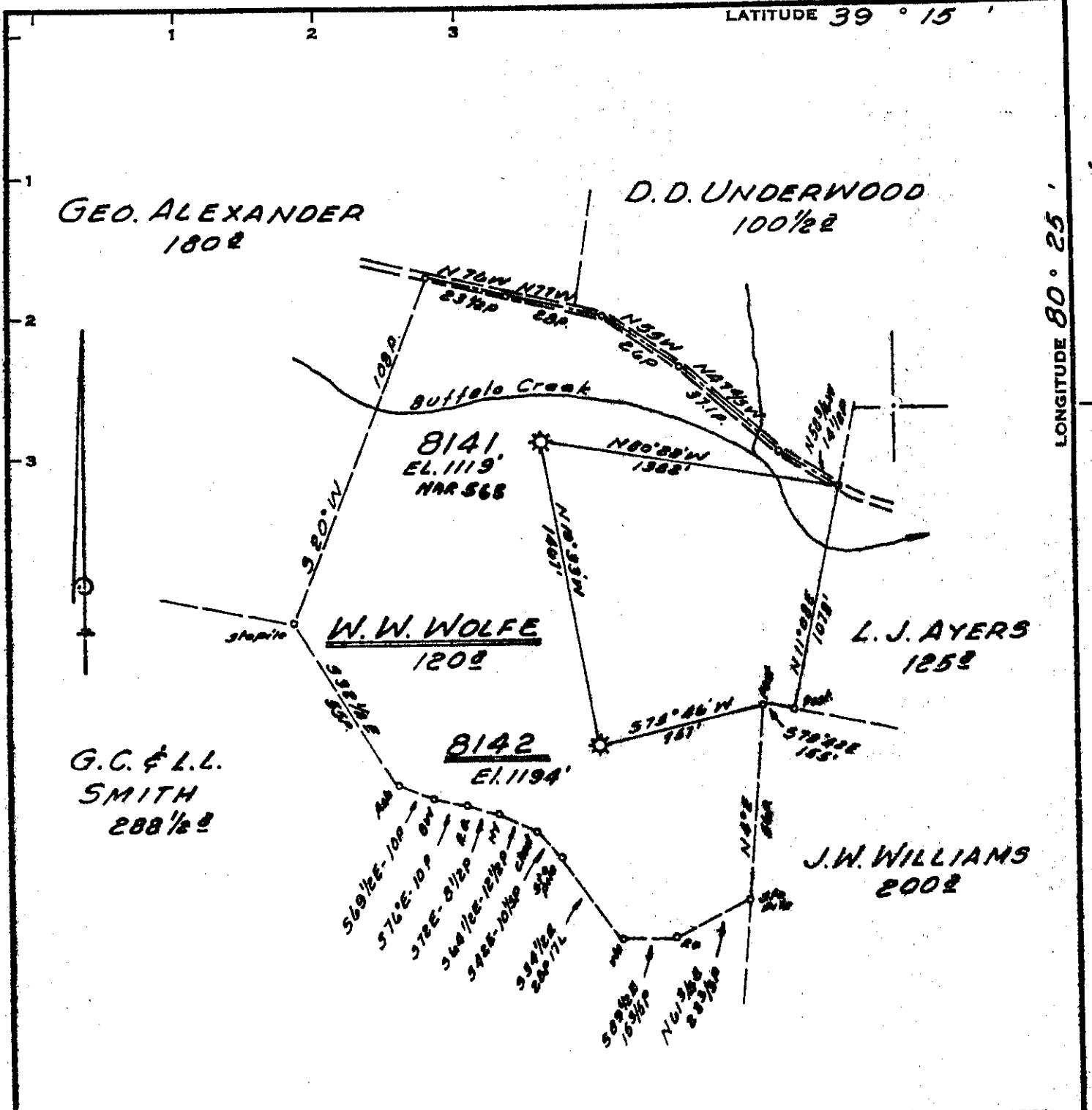
MAP SHT. 55; 518-E9, F.B. 730 Pg. 10

Company	CONSOLIDATED GAS SUPPLY CORR
Address	CLARKSBURG, W. VA.
Farm	W. W. WOLFE
Tract	Acres 120 Lease No. 52916
Well (Farm) No.	Serial No. 8142
Elevation (Spirit Level)	1194'
Quadrangle	WESTON
County	HARRISON District UNION
Engineer	Guy H. Bradley
Engineer's Registration No.	2425
File No.	Drawing No.
Date	AUG. 9, 1971 Scale 1" = 40 POLES

STATE OF WEST VIRGINIA
DEPARTMENT OF MINES
OIL AND GAS DIVISION
CHARLESTON

WELL LOCATION MAP
FILE NO. Hat-580-DD

+ Denotes location of well on United States Topographic Maps, scale 1 to 62,500, latitude and longitude lines being represented by border lines as shown.
 — Denotes one inch spaces on border line of original tracing.



LONGITUDE 80° 25' 15.100'

Minimum Error of Closure 1' IN 200'
 Source of Elevation CONSOLIDATED GAS SUPPLY CORP
WELL NO 8179 ELEVATION 1374'
 "I, the undersigned, hereby certify that this map is correct to the best of my knowledge and belief and shows all the information required by paragraph 4 of the rules and regulations of the oil and gas section of the mining laws of West Virginia."

New Location
 Drill Deeper
 Abandonment

issued 8-31-71
 MAP SHT. 55; 318-E9, F.B. 730 Pg. 10

Company CONSOLIDATED GAS SUPPLY CORP
 Address CLARKSBURG, W. VA.
 Farm W. W. WOLFE
 Tract Acres 120 Lease No. 52916
 Well (Farm) No. 8142 Serial No. 8142
 Elevation (Spiral Level) 1194'
 Quadrangle WESTON 110
 County HARRISON District UNION
 Engineer Guy H. Bradley
 Engineer's Registration No. 2425
 File No. _____ Drawing No. _____
 Date AUG. 9, 1971 Scale 1" = 40 POLES

STATE OF WEST VIRGINIA
 DEPARTMENT OF MINES
 OIL AND GAS DIVISION
 CHARLESTON

WELL LOCATION MAP
 FILE NO. HAR-580-DD-P

+ Denotes location of well on United States Topographic Maps, scale 1 to 62,500, latitude and longitude lines being represented by border lines as shown.
 — Denotes one inch spaces on border line of original tracing.