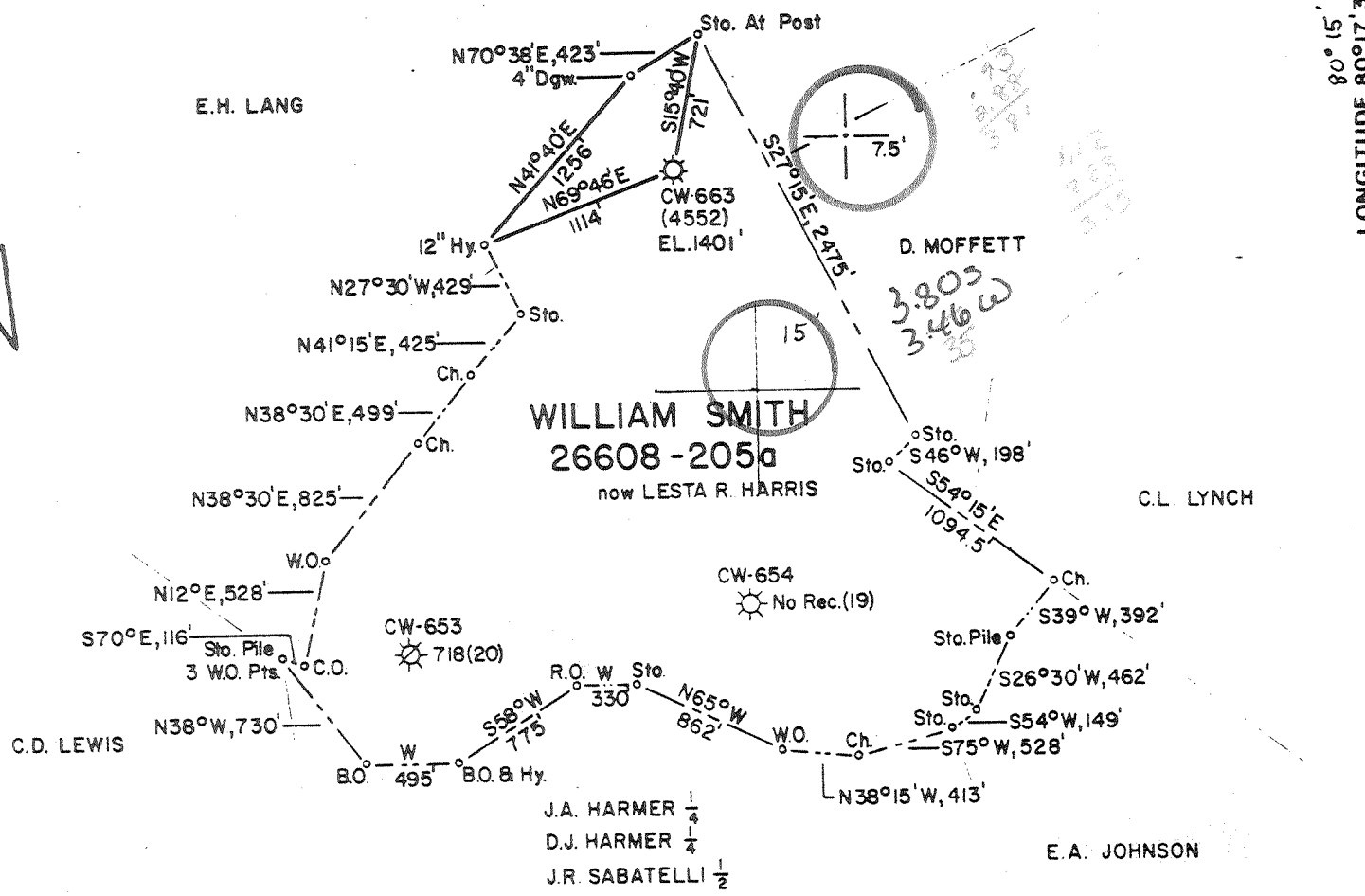


LATITUDE 39°12'30"
39°15'

LONGITUDE 80°17'30"
80°15'

4925'

NORTH



FB 2090 PG. 34-36 MP SHT 56 S19 E16

FILE NO. _____
 DRAWING NO. _____
 SCALE 1"=1000'
 MINIMUM DEGREE OF ACCURACY 1 in 200
 PROVEN SOURCE OF ELEVATION C.G.S.C. WELL CW-668
EL. 1261'

I THE UNDERSIGNED, HEREBY CERTIFY THAT THIS PLAT IS CORRECT TO THE BEST OF MY KNOWLEDGE AND BELIEF AND SHOWS ALL THE INFORMATION REQUIRED BY LAW AND THE REGULATIONS ISSUED AND PRESCRIBED BY THE DEPARTMENT OF MINES

(SIGNED) Danell M. Radcliffe
 R.P.E. _____ L.L.S. 74

PLACE SEAL HERE

(+) DENOTES LOCATION OF WELL ON UNITED STATES TOPOGRAPHIC MAPS
 FORM IV-6
 (8-78)



DATE 02-08 1992
 OPERATOR'S WELL NO. CW-663 (4552)
 API WELL NO. _____
47 - 033 - 1416-Rec.
 STATE COUNTY PERMIT

STATE OF WEST VIRGINIA
 DEPARTMENT OF MINES
 OIL AND GAS DIVISION

WELL TYPE OIL ___ GAS X LIQUID INJECTION ___ WASTE DISPOSAL ___
 (IF "GAS") PRODUCTION ___ STORAGE X DEEP ___ SHALLOW ___
 LOCATION ELEVATION 1402' WATER SHED SUDS RUN
 DISTRICT ELK COUNTY HARRISON
 QUADRANGLE MT. CLARE 7.5' Weston's NG
 SURFACE OWNER PAUL McCOY ACREAGE 205
 OIL & GAS ROYALTY OWNER WM. SMITH now LESTA R. HARRIS LEASE ACREAGE 205
 LEASE NO. 26608
 PROPOSED WORK: DRILL ___ CONVERT ___ DRILL DEEPER ___ REDRILL ___ FRACTURE OR
 STIMULATE ___ PLUG OFF OLD FORMATION X PERFORATE NEW
 FORMATION ___ OTHER PHYSICAL CHANGE IN WELL (SPECIFY) RECONDITION FOR STORAGE
 OBSERVATION _____
 PLUG AND ABANDON ___ CLEAN OUT AND REPLUG ___
 TARGET FORMATION GANTZ ESTIMATED DEPTH 2100'
 WELL OPERATOR CON. GAS SUP. CORP DESIGNATED AGENT THOMAS A. KUHN
 ADDRESS 445 W. MAIN ADDRESS 445 W. MAIN
CLARKSBURG, W.V. 26301 CLARKSBURG, W.V. 26301

MAR 9 1992
 Weston-John Law
 (153)

RECEIVED

OCT 15 1982

OIL AND GAS DIVISION
WV DEPARTMENT OF MINES



IV-35
(Rev 8-81)

Date October 12, 1982
Operator's
Well No. GW-663 (1552)
Farm William Smith
API No. 47 - 033 - 1116

State of West Virginia
Department of Mines
Oil and Gas Division

WELL OPERATOR'S REPORT
OF
DRILLING, FRACTURING AND/OR STIMULATING, OR PHYSICAL CHANGE

WELL TYPE: Oil / Gas x / Liquid Injection / Waste Disposal /
(If "Gas," Production / Underground Storage x / Deep / Shallow /)

LOCATION: Elevation: 1102' Watershed Suds Run
District: Elk County Harrison Quadrangle Wt. Clare

COMPANY Consolidated Gas Supply Corp.
ADDRESS 115 W. Main St., Clarksburg, WV
DESIGNATED AGENT Thomas A. Kuhn
ADDRESS 115 W. Main St., Clarksburg, WV
SURFACE OWNER Paul McCoy
ADDRESS Chinaston, WV
MINERAL RIGHTS OWNER Lesta R. Harris
ADDRESS 1111 23rd St., Parkersburg, WV 26131
OIL AND GAS INSPECTOR FOR THIS WORK Stephen
Casey ADDRESS Rt. 2, Box 232-B
Jane Lew, WV 26378

Casing & Tubing Size Cond.	Used in Drilling	Left in Well	Cement fill up Cu. ft.
20-16			
13-10"			
9 5/8			
8 5/8			
7 5/8		1572	
5 1/2"			filled 2202'
4 1/2	2155	2155	Cement 164 Skts.
3			
2			
Liners used			

PERMIT ISSUED February 17, 1982
Recondition
DRILLING COMMENCED March 1, 1982
Recondition
DRILLING COMPLETED March 9, 1982

IF APPLICABLE: PLUGGING OF DRY HOLE ON
CONTINUOUS PROGRESSION FROM DRILLING OR
REWORKING. VERBAL PERMISSION OBTAINED
ON

GEOLOGICAL TARGET FORMATION Gantz Depth 1913-1931 feet
Depth of completed well 2320 feet Rotary x / Cable Tools
Water strata depth: Fresh 113 feet; Salt feet
Coal seam depths: 103-113 Is coal being mined in the area?

OPEN FLOW DATA
Producing formation Gantz - Storage Observation Pay zone depth 1930-1935 feet
Gas: Initial open flow 0 Mcf/d Oil: Initial open flow Bbl/d
Final open flow 0 Mcf/d Final open flow Bbl/d
Time of open flow between initial and final tests none hours
Static rock pressure 46 psig (surface measurement) after 11 hours shut in
(If applicable due to multiple completion--)
Second producing formation Pay zone depth feet
Gas: Initial open flow Mcf/d Oil: Initial open flow Bbl/d
Final open flow Mcf/d Oil: Final open flow Bbl/d
Time of open flow between initial and final tests hours
Static rock pressure psig (surface measurement) after hours shut in

DETAILS OF PERFORATED INTERVALS, FRACTURING OR STIMULATING, PHYSICAL CHANGE, ETC.

Pulled 2292' of 5 1/2" casing.
 Plugged back bottom hole from 2322-2324' with 11 sacks of cement and 25 sacks of gel.
 Ran 2155' of 4 1/2" casing. Cemented with 460 sacks of cement. Plug set at 2123'.
 Perforated Gantz at 1930-1935' with 15 holes.
 Acidized using 1000 gals. 15% HCL acid.

WELL LOG

FORMATION	COLOR	HARD OR SOFT	TOP FEET	BOTTOM FEET	REMARKS Including indication of all fresh and salt water, coal, oil and gas
Coal			408	413	
Dunkard			425	525	
Salt			810	1020	
Maxon			1240	1280	
Injun			1560	1655	
Gantz			1948	1981	
Total Depth				2324	

(Attach separate sheets as necessary)

Consolidated Gas Supply Corp.

Well Operator

By: *J. E. Payne* Manager of Production

Date: October 12, 1982 *by Ralph D. ...*

Note: Regulation 2.02(i) provides as follows:
 "The term 'log' or 'well log' shall mean a systematic detailed geological record of all formations, including coal, encountered in the drilling of a well."