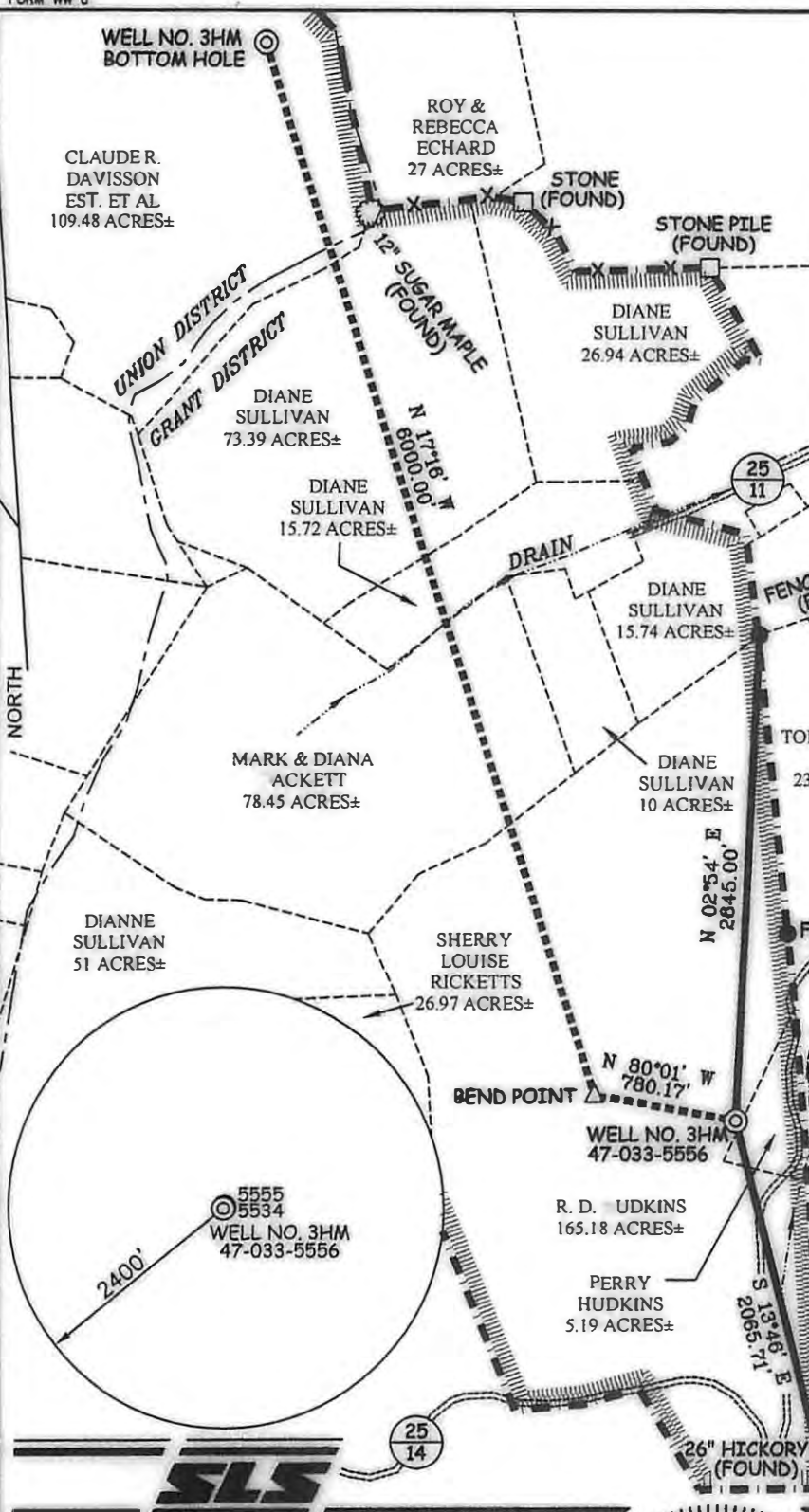


HUDKINS LEASE WELL NO. 3HM



WELL NO. 3HM TOP HOLE STATE PLANE COORDINATES (NORTH ZONE NAD '27) N. 256,267 E. 1,758,699 <hr/> TOP HOLE (NAD '27) LAT=(N) 39°12'01.7" LONG=(W) 80°21'05.3" <hr/> TOP HOLE (NAD '83) LAT=(N) 39°12'02.0" LONG=(W) 80°21'04.6" <hr/> TOP HOLE UTM (NAD '83) N. 4,339,293 E. 556,016	WELL NO. 3HM BEND POINT STATE PLANE COORDINATES (NORTH ZONE NAD '27) N. 256,402 E. 1,757,931 <hr/> BEND POINT (NAD '27) LAT=(N) 39°12'02.9" LONG=(W) 80°21'15.0" <hr/> BEND POINT (NAD '83) LAT=(N) 39°12'03.3" LONG=(W) 80°21'14.4" <hr/> BEND POINT UTM (NAD '83) N. 4,339,271 E. 555,781
WELL NO. 3HM BOTTOM HOLE STATE PLANE COORDINATES (NORTH ZONE NAD '27) N. 262,132 E. 1,758,150 <hr/> BOTTOM HOLE (NAD '27) LAT=(N) 39°12'59.4" LONG=(W) 80°21'38.3" <hr/> BOTTOM HOLE (NAD '83) LAT=(N) 39°12'59.7" LONG=(W) 80°21'37.7" <hr/> BOTTOM HOLE UTM (NAD '83) N. 4,341,007 E. 555,210	

NOTES ON SURVEY

1. TIES TO WELLS, REFERENCES, AND CORNERS ARE BASED ON GRID NORTH FOR THE WV STATE PLANE COORDINATE SYSTEM NORTH ZONE NAD '27.
2. LEASE BOUNDARY SHOWN HEREON TAKEN FROM DEED BOOK 558 PAGE 393 AND ADJOINING DEEDS.
3. SURFACE OWNER AND ADJOINER INFORMATION TAKEN FROM THE ASSESSOR AND COUNTY CLERK RECORDS OF HARRISON COUNTY
4. WELL COORDINATES ESTABLISHED BY DGPS(SURVEY GRADE).

REFERENCES



I THE UNDERSIGNED, HEREBY CERTIFY THAT THIS PLAT IS CORRECT TO THE BEST OF MY KNOWLEDGE AND BELIEF AND SHOWS ALL THE INFORMATION REQUIRED BY LAW AND THE REGULATIONS ISSUED AND PRESCRIBED BY THE DIVISION OF ENVIRONMENTAL PROTECTION.

P.S. 677

Gregory A. Smith



(+) DENOTES LOCATION OF WELL ON UNITED STATES TOPOGRAPHIC MAPS.

DATE APRIL 8 20 11

REVISED JUNE 26 20 13

OPERATORS WELL NO. HUDKINS 3HM


API WELL NO. 47 - 033 - 05556

STATE Revised COUNTY Revised PERMIT

MINIMUM DEGREE OF ACCURACY 1/200 FILE NO. 7457P3HMR (343-11)

PROVEN SOURCE OF ELEVATION DGPS (SURVEY GRADE) SCALE 1" = 1,000'

STATE OF WEST VIRGINIA
DIVISION OF ENVIRONMENTAL PROTECTION
OFFICE OF OIL AND GAS



WELL TYPE: OIL GAS LIQUID INJECTION WASTE DISPOSAL IF "GAS" PRODUCTION STORAGE DEEP SHALLOW

LOCATION: ELEVATION 1,174' WATERSHED BROWNS CREEK

DISTRICT GRANT COUNTY HARRISON QUADRANGLE MOUNT CLARE 7.5'

SURFACE OWNER R. D. HUDKINS & PERRY HUDKINS ACREAGE 165.18± & 5.19±

ROYALTY OWNER R.D. HUDKINS, ET AL LEASE ACREAGE 165.18, 5.19, 78.45, 15.72, 73.39, & 109.48±

PROPOSED WORK: DRILL CONVERT DRILL DEEPER REDRILL FRACTURE OR STIMULATE PLUG OFF OLD FORMATION PERFORATE NEW FORMATION PLUG AND ABANDON CLEAN OUT AND REPLUG OTHER

PHYSICAL CHANGE IN WELL (SPECIFY) _____ TARGET FORMATION MARCELLUS

ESTIMATED DEPTH 7,376' TVD/ 13,959' MD

WELL OPERATOR PDC MOUNTAINEER, LLC DESIGNATED AGENT JAMIE HAGA

ADDRESS 120 GENESIS BOULEVARD ADDRESS 120 GENESIS BOULEVARD

BRIDGEPORT, WV 26330 BRIDGEPORT, WV 26330

07/26/2013