

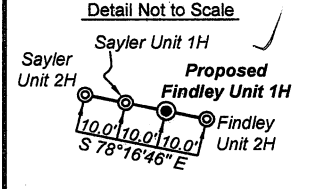
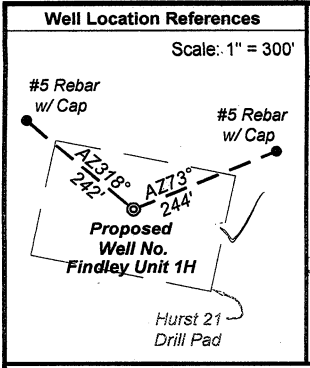
12,822' to Bottom Hole

10,571' to Top Hole

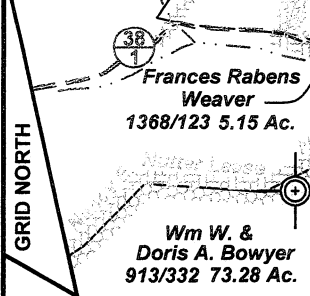
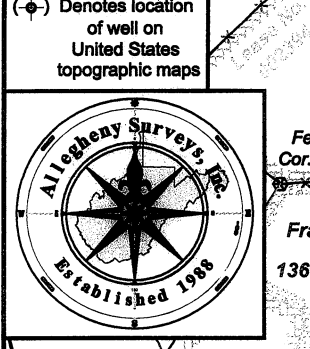
BOT. HOLE LATITUDE 39 - 15 - 00
TOP HOLE LATITUDE 39 - 12 - 30

TOP HOLE LONGITUDE 80-27-30
BOT. HOLE LONGITUDE 80-27-30

14,625' to Bottom Hole



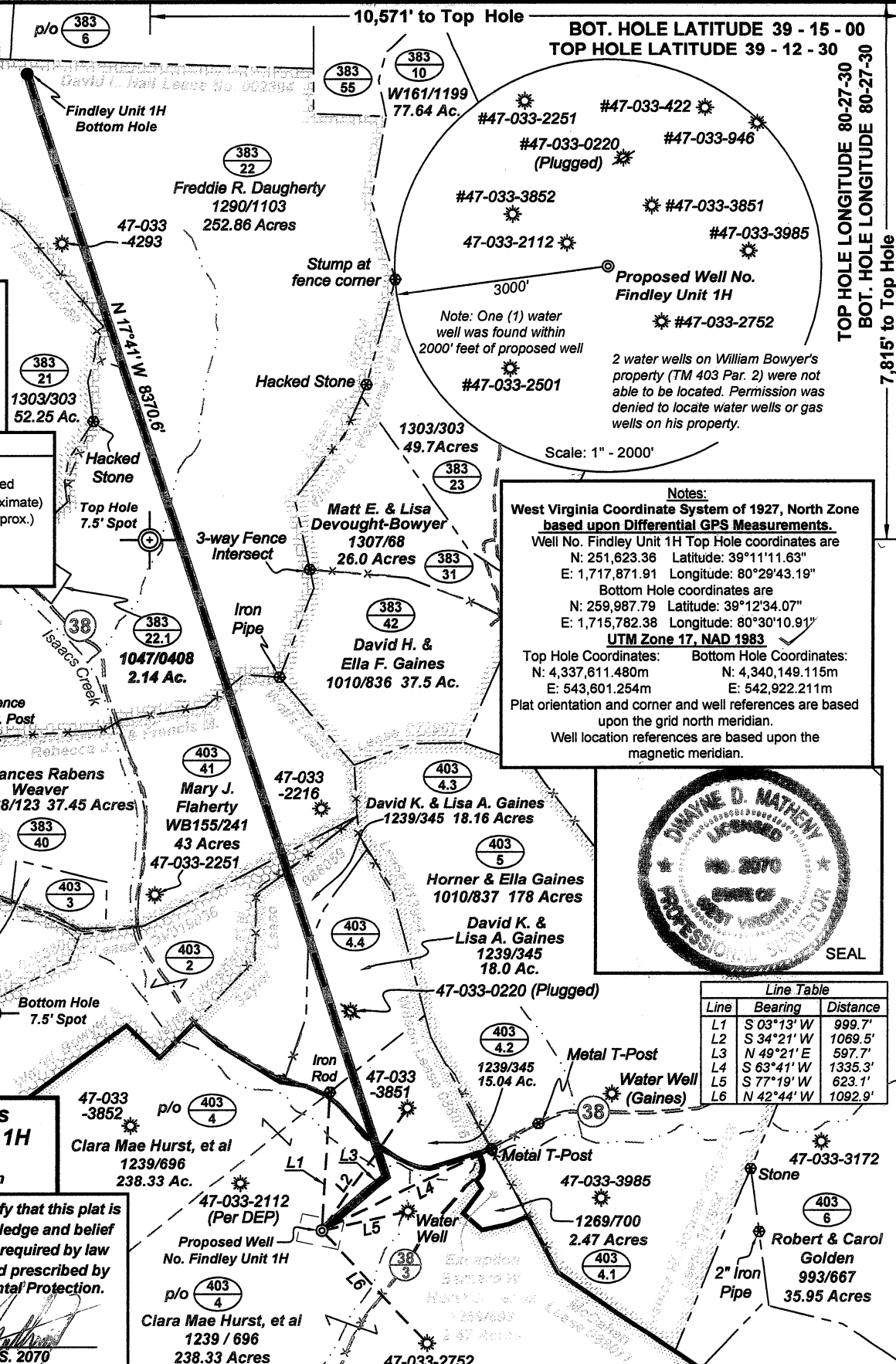
- Legend**
- ⊙ Proposed gas well
 - ⊗ Found monument, as noted
 - Surface boundary (approximate)
 - Interior surface tracts (approx.)
 - == (38) == Existing County Road
 - - - Existing Creek or Drain
 - - - Existing Fenceline
- (⊙) Denotes location of well on United States topographic maps



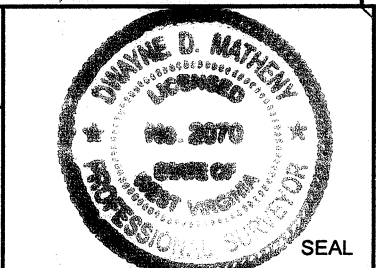
Antero Resources
Well No. Findley Unit 1H
Antero Resources
Appalachian Corporation

I, the undersigned, hereby certify that this plat is correct to the best of my knowledge and belief and shows all the information required by law and the regulations issued and prescribed by the Department of Environmental Protection.

Dwayne D. Matheny
Dwayne D. Matheny, P.S. 2070



Notes:
West Virginia Coordinate System of 1927, North Zone based upon Differential GPS Measurements.
Well No. Findley Unit 1H Top Hole coordinates are
N: 251,623.36 Latitude: 39°11'11.63"
E: 1,717,871.91 Longitude: 80°29'43.19"
Bottom Hole coordinates are
N: 259,987.79 Latitude: 39°12'34.07"
E: 1,715,782.38 Longitude: 80°30'10.91"
UTM Zone 17, NAD 1983
Top Hole Coordinates: Bottom Hole Coordinates:
N: 4,337,611.480m N: 4,340,149.115m
E: 543,601.254m E: 542,922.211m
Plat orientation and corner and well references are based upon the grid north meridian.
Well location references are based upon the magnetic meridian.



Line Table

Line	Bearing	Distance
L1	S 03°13' W	999.7'
L2	S 34°21' W	1069.5'
L3	N 49°21' E	597.7'
L4	S 63°41' W	1335.3'
L5	S 77°19' W	623.1'
L6	N 42°44' W	1092.9'

FILE NO: **88-36-U-11**
DRAWING NO: **Antero-Findley Unit 1H**
SCALE: **1" = 1000'**
MINIMUM DEGREE OF ACCURACY: **Submeter**
PROVEN SOURCE OF ELEVATION: **CORS Glenville, WV**

STATE OF WEST VIRGINIA
DEPARTMENT OF ENVIRONMENTAL PROTECTION
OFFICE OF OIL AND GAS

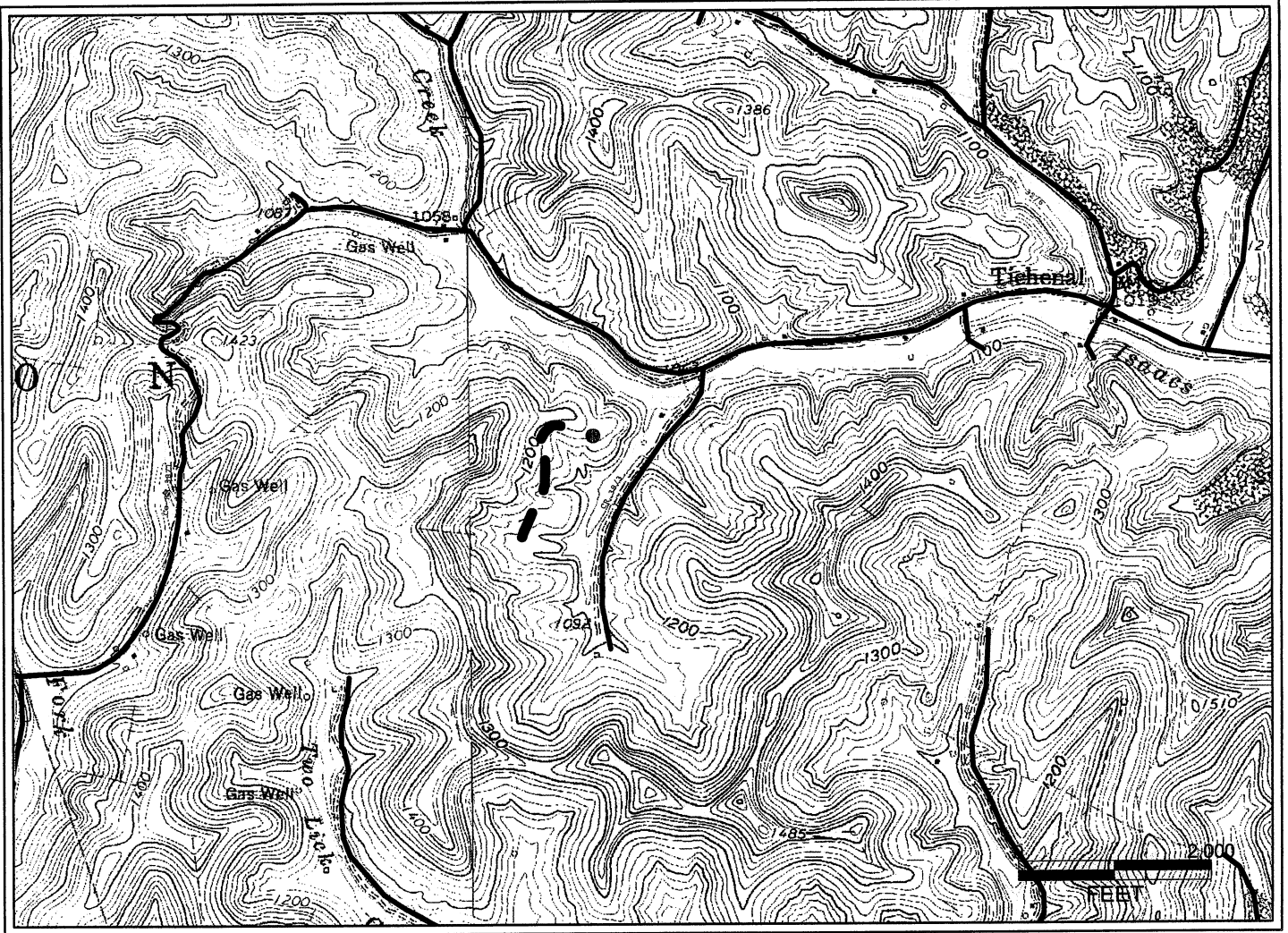
DATE: **Sept. 16, 2011**
OPERATOR'S WELL NO. **Findley Unit 1H**
API WELL NO.:
047 - 033 - 055844
STATE COUNTY PERMIT

WELL TYPE: OIL GAS LIQUID INJECTION WASTE DISPOSAL
(IF GAS) PRODUCTION: STORAGE DEEP SHALLOW
LOCATION: ELEVATION: **1172'** WATERSHED **Isaacs Creek**
QUADRANGLE: **West Milford** DISTRICT: **Union** COUNTY: **Harrison**
SURFACE OWNER: **Clara Mae Hurst, et al** ACREAGE: **238.33**
OIL & GAS ROYALTY OWNER: **Mary M. Saylor, et al/Leon F. Wilson, et al/Hallie McGahan, David L. Hall** LEASE NO: **088059/088076/088077** ACREAGE: **80 296.255.80**
PROPOSED WORK: DRILL CONVERT DRILL DEEPER FRACTURE OR STIMULATE PLUG OFF OLD FORMATION
 PERFORATE NEW FORMATION OTHER PHYSICAL CHANGE IN WELL (SPECIFY) _____
 PLUG AND ABANDON CLEAN OUT AND REPLUG TARGET FORMATION: **Marcellus Shale** ESTIMATED DEPTH: **TVD 7,100' MD 17,000'**

WELL OPERATOR: **Antero Resources Appalachian Corporation** DESIGNATED AGENT: **Diana Stamper - CT Corporation System**
ADDRESS: **1625 17th Street** ADDRESS: **5400 D Big Tyler Road**
Denver, CO 80202 **Charleston, WV 25313**

01/13/2012

33-05584H



RECEIVED
Office of Oil & Gas
SEP 28 2011
WV Department of
Environmental Protection

Antero Resources Corporation
APPALACHIAN BASIN
Findley Unit 1H Harrison County
0 2,000 4,000 FEET
REMARKS QUADRANGLE: WEST MILFORD WATERSHED: ISAACS CREEK DISTRICT: UNION
January 9, 2009