

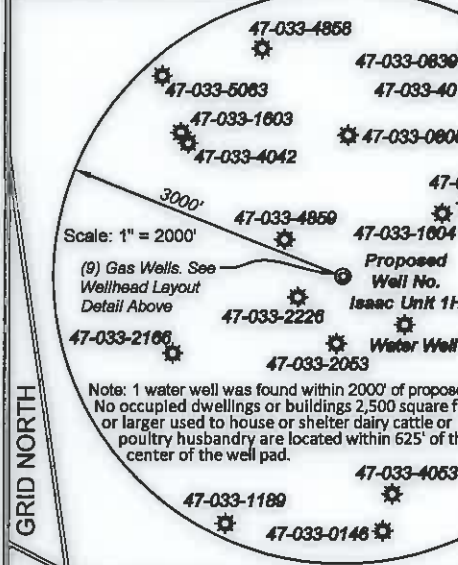
Antero Resources
Well No. Isaac Unit 1H
Antero Resources Corporation

17.1 Ronald D. Cork 1245/1115 22.81
 15 Blue Heron Property Mgt II LLC 1441/1042 25.14
 3 Blue Heron Property Mgt II LLC 1441/1045 131.61
 4 Ronald & Carol Cork 993/216 6.63
 5 Blue Heron Property Mgt II LLC 1441/1045 5.0

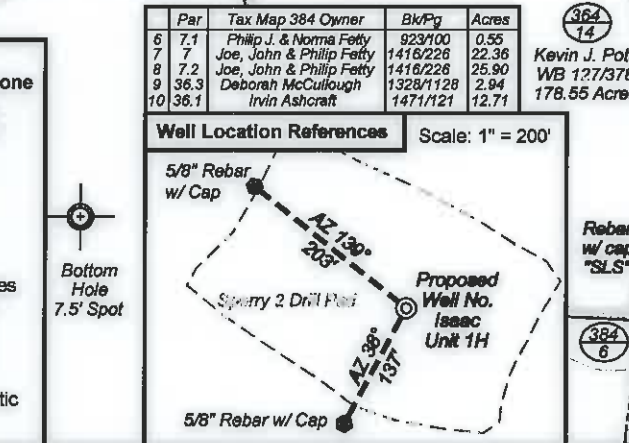
Clarence Sperry WB 145/216 88.14 Ac.
 Proposed Well No. Isaac Unit 1H
 47-033-4859
 Clarence Sperry WB 145/216 87.10 Ac.
 47-033-1604
 Clarence Sperry WB 145/216 18.50 Ac.
 47-033-0901
 Clarence Sperry WB 145/216 90.51 Acres

Bernard Post 1436/574 122.5 Ac.
 (Digitized Location, prop. owner will not allow access)
 Steven Garvin 1246/1149 23.63 Acres
 47-033-0146
 47-033-4052
 Mountain Lakes Limited Liability Co. 1232/612 232.13 Acres
 G. T. Post Lease 032924
 S.C. Allen, et al Leases 90391 & 90392
 Mountain Lakes LLC 1232/612 49.6 Acres
 E. T. Post Lease 032924
 Kevin J. Poth WB 127/378 178.55 Acres

Burl Post 1356/781 50.35 Ac.
 Top Hole 7.5' Spot
 Burl Post 1356/781 92.32 Ac.
 Burl Post 1356/781 29.08 Acres
 Burl Post 696/413 11.21 Acres
 Burl Post 1356/781 4.904 Acres
 John Ashcraft 1221/1087 1.33 Ac.
 John Ashcraft 1145/711 19.59 Ac.
 Blue Heron Property 1441/1049 344.95 Acres
 Isaac L. Post, et ux Lease 052925
 Isaac L. Post, et ux Lease 052926
 Isaac L. Post, et ux Lease 052927
 Isaac L. Post, et ux Lease 052928
 Isaac L. Post, et ux Lease 052929
 Isaac L. Post, et ux Lease 052930
 Isaac L. Post, et ux Lease 052931
 Isaac L. Post, et ux Lease 052932
 Isaac L. Post, et ux Lease 052933
 Isaac L. Post, et ux Lease 052934
 Isaac L. Post, et ux Lease 052935
 Isaac L. Post, et ux Lease 052936
 Isaac L. Post, et ux Lease 052937
 Isaac L. Post, et ux Lease 052938
 Isaac L. Post, et ux Lease 052939
 Isaac L. Post, et ux Lease 052940
 Isaac L. Post, et ux Lease 052941
 Isaac L. Post, et ux Lease 052942
 Isaac L. Post, et ux Lease 052943
 Isaac L. Post, et ux Lease 052944
 Isaac L. Post, et ux Lease 052945
 Isaac L. Post, et ux Lease 052946
 Isaac L. Post, et ux Lease 052947
 Isaac L. Post, et ux Lease 052948
 Isaac L. Post, et ux Lease 052949
 Isaac L. Post, et ux Lease 052950
 Isaac L. Post, et ux Lease 052951
 Isaac L. Post, et ux Lease 052952
 Isaac L. Post, et ux Lease 052953
 Isaac L. Post, et ux Lease 052954
 Isaac L. Post, et ux Lease 052955
 Isaac L. Post, et ux Lease 052956
 Isaac L. Post, et ux Lease 052957
 Isaac L. Post, et ux Lease 052958
 Isaac L. Post, et ux Lease 052959
 Isaac L. Post, et ux Lease 052960
 Isaac L. Post, et ux Lease 052961
 Isaac L. Post, et ux Lease 052962
 Isaac L. Post, et ux Lease 052963
 Isaac L. Post, et ux Lease 052964
 Isaac L. Post, et ux Lease 052965
 Isaac L. Post, et ux Lease 052966
 Isaac L. Post, et ux Lease 052967
 Isaac L. Post, et ux Lease 052968
 Isaac L. Post, et ux Lease 052969
 Isaac L. Post, et ux Lease 052970
 Isaac L. Post, et ux Lease 052971
 Isaac L. Post, et ux Lease 052972
 Isaac L. Post, et ux Lease 052973
 Isaac L. Post, et ux Lease 052974
 Isaac L. Post, et ux Lease 052975
 Isaac L. Post, et ux Lease 052976
 Isaac L. Post, et ux Lease 052977
 Isaac L. Post, et ux Lease 052978
 Isaac L. Post, et ux Lease 052979
 Isaac L. Post, et ux Lease 052980
 Isaac L. Post, et ux Lease 052981
 Isaac L. Post, et ux Lease 052982
 Isaac L. Post, et ux Lease 052983
 Isaac L. Post, et ux Lease 052984
 Isaac L. Post, et ux Lease 052985
 Isaac L. Post, et ux Lease 052986
 Isaac L. Post, et ux Lease 052987
 Isaac L. Post, et ux Lease 052988
 Isaac L. Post, et ux Lease 052989
 Isaac L. Post, et ux Lease 052990
 Isaac L. Post, et ux Lease 052991
 Isaac L. Post, et ux Lease 052992
 Isaac L. Post, et ux Lease 052993
 Isaac L. Post, et ux Lease 052994
 Isaac L. Post, et ux Lease 052995
 Isaac L. Post, et ux Lease 052996
 Isaac L. Post, et ux Lease 052997
 Isaac L. Post, et ux Lease 052998
 Isaac L. Post, et ux Lease 052999
 Isaac L. Post, et ux Lease 053000



Notes:
 West Virginia Coordinate System of 1927, North Zone based upon Differential GPS Measurements.
 Well No. Isaac Unit 1H Top Hole coordinates are
 N: 270,258.90' Latitude: 39°14'16.72"
 E: 1,726,255.88' Longitude: 80°27'59.28"
 Bottom Hole coordinates are
 N: 260,749.44' Latitude: 39°12'43.16"
 E: 1,730,533.98' Longitude: 80°27'03.61"
UTM Zone 17, NAD 1983
 Top Hole Coordinates Bottom Hole Coordinates
 N: 4,343,331.414m N: 4,340,456.029m
 E: 546,060.879m E: 547,412.496m
 Plat orientation and corner and well references are based upon the grid north meridian.
 Well location references are based upon the magnetic meridian.



I, the undersigned, hereby certify that this plat is correct to the best of my knowledge and belief and shows all the information required by law and the rules issued and prescribed by the Department of Environmental Protection.

Kenneth J. Plum
Kenneth J. Plum, P.S. 2216



FILE NO: 183-36-U-11
 DRAWING NO: 183-11 Isaac 1H Well Plat
 SCALE: 1" = 1500'
 MINIMUM DEGREE OF ACCURACY: Submeter
 PROVEN SOURCE OF ELEVATION: WVDOT, Bridgeport, WV

STATE OF WEST VIRGINIA
 DEPARTMENT OF ENVIRONMENTAL PROTECTION
OIL AND GAS DIVISION

DATE: August 1 2013
 OPERATOR'S WELL NO. Isaac Unit 1H
 API WELL NO **MD**
 47 - 033 - 05724 **H6A**
 STATE COUNTY PERMIT

WELL TYPE: OIL GAS LIQUID INJECTION WASTE DISPOSAL
 (IF GAS) PRODUCTION: STORAGE DEEP SHALLOW
 LOCATION: ELEVATION: 1168' WATERSHED: Sycamore Creek QUADRANGLE: West Milford
 DISTRICT: Union COUNTY: Harrison
 SURFACE OWNER: Clarence Sperry Isaac L. Post, et ux 90394 & 90458 ACREAGE: 87.10 158; 121
 ROYALTY OWNER: A.A. Post, et ux; A.A. Post, et ux; D.O. Morgan, et ux S.C. Allen, et al; D.O. Morgan, et ux 052846; 052924; 052851 235; 237
 PROPOSED WORK: DRILL CONVERT DRILL DEEPER FRACTURE OR STIMULATE PLUG OFF OLD FORMATION
 PERFORATE NEW FORMATION OTHER PHYSICAL CHANGE IN WELL (SPECIFY) Modification - BHL
 PLUG AND ABANDON CLEAN OUT AND REPLUG TARGET FORMATION: Marcellus Shale ESTIMATED DEPTH: 7,200' TVD 16,900' MD

WELL OPERATOR: Antero Resources Corporation DESIGNATED AGENT: Dianna Stamper - CT Corporation System
 ADDRESS: 1625 17th Street ADDRESS: 5400 D Big Tyler Road
 Denver, CO 80202 Charleston, WV 25313

08/16/2013