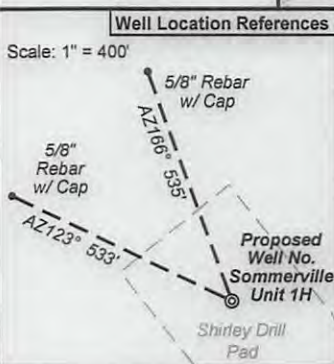


Legend

- Proposed gas well
- Found Monument (as noted)
- Creek or Drain
- Existing Road
- Surface boundary (approx.)
- Interior surface tracts (approx.)

Bearing	Distance
L1 S 67°06' E	587.2'
L2 S 89°49' W	935.9'
L3 S 47°21' W	1392.5'
L4 S 00°34' W	1111.7'
L5 N 45°41' E	570.4'



I, the undersigned, hereby certify that this plat is correct to the best of my knowledge and belief and shows all the information required by law and the rules issued and prescribed by the Department of Environmental Protection.

Kenneth J. Plum
Kenneth J. Plum, P.S. 2216

Notes:
West Virginia Coordinate System of 1927, North Zone based upon Differential GPS Measurements.
Well No. Sommerville Unit 1H Top Hole coordinates are
N: 261,112.18' Latitude: 39°12'44.60"
E: 1,710,530.27' Longitude: 80°31'17.79"
Bottom Hole coordinates are
N: 269,673.07' Latitude: 39°14'08.97"
E: 1,708,429.15' Longitude: 80°31'45.73"
UTM Zone 17, NAD 1983
Top Hole Coordinates Bottom Hole Coordinates
N: 4,340,464.981m N: 4,343,062.402m
E: 541,316.415m E: 540,632.826m
Plat orientation and corner and well references are based upon the grid north meridian.
Well location references are based upon the magnetic meridian.

FILE NO: 310-36-U-12
DRAWING NO: 310-12 Sommerville 1H Well
SCALE: 1" = 1200'
MINIMUM DEGREE OF ACCURACY: Submeter
PROVEN SOURCE OF ELEVATION: WVDOT, Bridgeport, WV

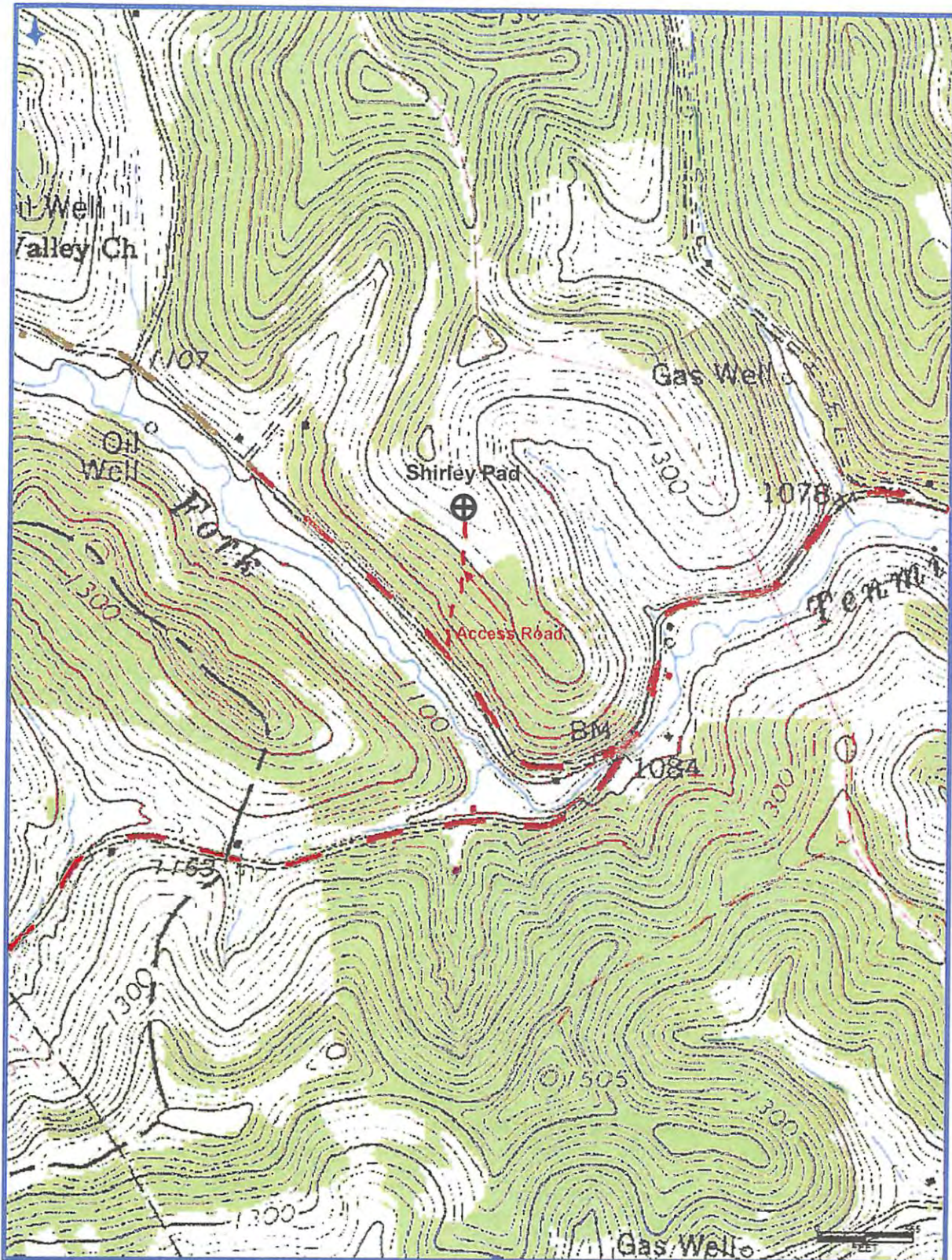
STATE OF WEST VIRGINIA
DEPARTMENT OF ENVIRONMENTAL PROTECTION
OIL AND GAS DIVISION

DATE: October 18 2013
OPERATOR'S WELL NO. Sommerville Unit 1H
API WELL NO
47 - 033 - 0579846A
STATE COUNTY PERMIT

WELL TYPE: OIL GAS LIQUID INJECTION WASTE DISPOSAL
(IF GAS) PRODUCTION: STORAGE DEEP SHALLOW
LOCATION: ELEVATION: 1328' WATERSHED: Tenmile Creek QUADRANGLE: Big Isaac
DISTRICT: Union Harold Gaines, et al; Helen Marie Swiger, et al; Benji W. Cunningham, et ux; Claude E. Bennett, et ux COUNTY: Harrison 45.79
SURFACE OWNER: Shirley Jo Davis Leon Wilson, et al; CNX Gas Company LLC DV019289 ACREAGE: 87.70 24.12; 60; 54
ROYALTY OWNER: Douglas Roy Meister, Freda M. Allman, Sally D. Federer, Paul D. Smith LEASE NO: 21443; DAD65592/001 ACRES: 22.75; 112.64; 48.3
PROPOSED WORK: DRILL CONVERT DRILL DEEPER FRACTURE OR STIMULATE PLUG OFF OLD FORMATION
 PERFORATE NEW FORMATION OTHER PHYSICAL CHANGE IN WELL (SPECIFY) _____ 7,500' TVD
 PLUG AND ABANDON CLEAN OUT AND REPLUG TARGET FORMATION: Marcellus Shale ESTIMATED DEPTH: 17,000' MD

WELL OPERATOR: Antero Resources Corporation DESIGNATED AGENT: Dianna Stamper - CT Corporation System
ADDRESS: 1625 17th Street ADDRESS: 5400 D Big Tyler Road
Denver, CO 80202 Charleston, WV 25313

11/29/2013



Antero Resources Corporation

Appalachian Basin
 Sommerville Unit 1
 Harrison County

Quadrangle: Big Isaac
 Watershed: Headwaters Tenmile Creek
 District: Union
 Date: 9-11-2013

RECEIVED
 Office of Oil and Gas
 NOV 14 2013
 WV Department of
 Environmental Protection