

0272  
 .....CLAY.....District, Harrison County, W. Va. 146A  
 By South Penn Oil Co., P. O. Drawer 1255, Pittsburgh, Pa.  
 On 171 acres, surface owned by Chester A. Shreves, Shinnston, W. Va.,  
 and mineral rights by A. A. Shinn Heirs, Mrs. Tessie Martin,  
 R. B. No. 2, Bridgeport, W. Va.

Elevation, 961' L.

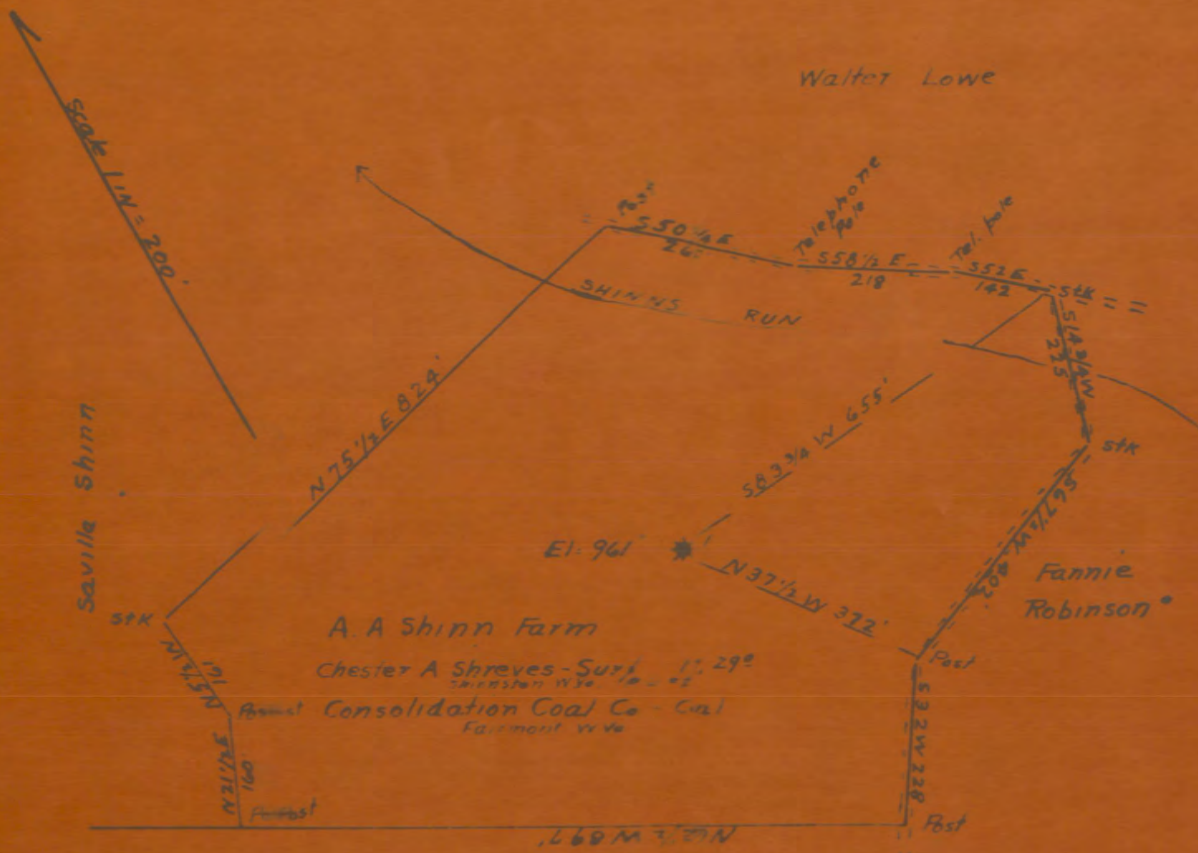
10" casing, 144'; 8", 1193'; 6-5/8", 1433'; 5-3/16", 2093'.

Abandonment reported to Dept. of Mines Sept. 14, 1932.

Well was shot ~~with~~ with 20 qts. and 60 qts.

Saltwater at 604'.

	Top.	Bottom.
Little Dunkard Sand	412	- 430
Big Dunkard Sand	525	- 555
Gas Sand (water, 604')	585	- 650
1st Salt Sand	672	- 843
2nd Salt Sand (smell gas, 845')	844	- 1035
Little Lime	1350	- 1365
Pencil Cave	1365	- 1373
Big Lime	1373	- 1434
Big Injun Sand (gas, 1454')	1434	- 1538
Squaw Sand	1561	- 1591
Fifty-foot Sand	1874	- 1893
Thirty-foot Sand	1937	- 2000
Gordon Stray Sand	2006	- 2060
Gordon Sand	2077	- 2096
Fourth Sand	2102	- 2122
Fifth Sand (gas, 2326'; oil, 2331')	2294	- 2348
Bayard Sand (oil, 2439')	2429	- 2443
Total depth		2449



Savilla Shinn

Belle Ogden Carr

Surveyor

HAR-106A

I, the undersigned, hereby certify that this map is correct and shows all the information that, at the time hereof and belief, was required by the oil and gas laws of the "Virgin Lands of West Virginia."

Walter Loomer