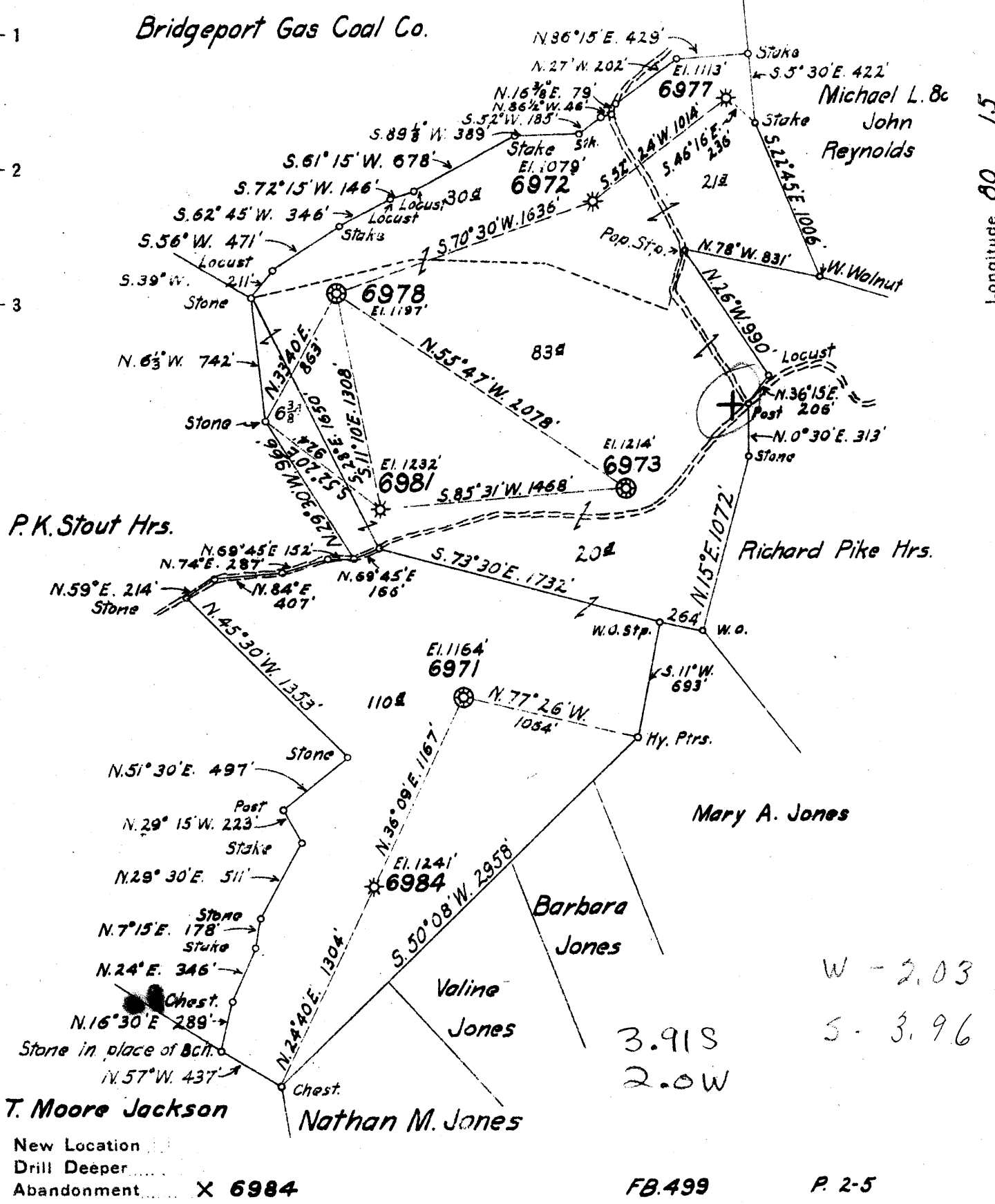


Bridgeport Gas Coal Co.



W - 2.03  
 S - 3.96  
 3.918  
 2.0W

FB.499 P. 2-5

Company HOPE NATURAL GAS Co.  
 Address Clarksburg, W. Va.  
 Farm Mary E. Corpening Hrs.  
 Tract \_\_\_\_\_ Acres 250 Lease No. \_\_\_\_\_  
 Well (Farm) No. \_\_\_\_\_ Serial No. See Above  
 Elevation (Spirit Level) See Above 1241  
 Quadrangle Clarksburg S E  
 County Harrison District Simpson  
 Engineer Wm Bowers  
 Engineer's Registration No. 900  
 File No. \_\_\_\_\_ Drawing No. \_\_\_\_\_  
 Date 1-3-40 Scale 1"=800'

STATE OF WEST VIRGINIA  
 DEPARTMENT OF MINES  
 OIL AND GAS DIVISION  
 CHARLESTON

**WELL LOCATION MAP**  
 FILE NO. HAR-554A

+ Denotes location of well on United States Topographic Maps, scale 1 to 62,500. latitude and longitude lines being represented by border lines as shown.

- Denotes one inch spaces on border line of original tracing.

WEST VIRGINIA DEPARTMENT OF MINES

OIL & GAS DIVISION

WELL RECORD

Permit No. Har-554 (plugging)

- Quad.

Gas well  
CASING & TUBING

Company	Hope Natural Gas Co.	10	165	165
Address	Mary E. Cornening Heirs.	8-1/4	1030	1030
Farm	- ACRES 250	6-5/8	1545	1545
Location	Ann Moore's Run	2	2535	pulled
Well No.	6984 ELEV. 1241			
District	Simsom - Harrison County			Not cemented
Surface & Mineral	-			
Commenced	Dec. 22, 1922			
Completed	Feb. 18, 1923			
Date shot	2/13/23 - Depth 5th sand			
Open Flow	-			
Volume	-			
Rock Pressure	-			
Fresh Water	None recorded			
Salt Water	820			

✓  
JAN 29 1940

Formation	Top	Base	Result
Sand	100	120	
Sand	190	250	
Little Dunkard Sand	405	630	
Big Dunkard Sand	515	530	
First Salt Sand	690	730	
Second Salt Sand	750	800	
Third Salt Sand	910	1115	Water 820
Maxon Sand	1330	1370	
Little Lime	1440	1450	
Big Lime	1475	1550	
Big Injun Sand	1530	1656	
Fifty Foot Sand	1970	2060	
Thirty Foot Sand	2065	2175	
Gordon Stray Sand	2337	2350	Gas 2297-2300
Gordon Sand	2365	2430	
Fifth Sand	2492	2525	Gas 2514
Total Depth		2535	NOW DRY WELL (Plat Service Data Jan. 1940)

STATE OF WEST VIRGINIA  
DEPARTMENT OF MINES  
OIL AND GAS DIVISION

447

WELL RECORD

Permit No. Hur-554 A Blugging

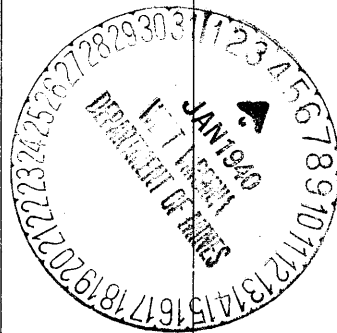
Oil or Gas Well Gas  
(Kind)

Company Hope Natural Gas Company  
Address Mary E. Corpening Heirs  
Farm \_\_\_\_\_ Acres 250  
Location (waters) Ann Moore's Run  
Well No. 6984 Elev. 1241  
District Simpson County Harrison  
The surface of tract is owned in fee by \_\_\_\_\_  
Address \_\_\_\_\_  
Mineral rights are owned by \_\_\_\_\_  
Address \_\_\_\_\_  
Drilling commenced Dec. 22, 1922  
Drilling completed Feb. 18, 1923  
Date shot 2-13-1923 Depth of shot 5th sand  
Open Flow \_\_\_\_\_ /10ths Water in \_\_\_\_\_ Inch  
\_\_\_\_\_ /10ths Merc. in \_\_\_\_\_ Inch  
Volume \_\_\_\_\_ Cu. Ft.  
Rock Pressure \_\_\_\_\_ lbs. \_\_\_\_\_ hrs.  
Oil \_\_\_\_\_ bbls., 1st 24 hrs.  
Fresh water None recorded feet \_\_\_\_\_ feet  
Salt water 820 feet \_\_\_\_\_ feet

Casing and Tubing	Used in Drilling	Left in Well	Packers
Size			Kind of Packer
16			
13			
10	<b>165</b>	<b>165</b>	Size of
8 1/4	<b>1030</b>	<b>1030</b>	
6 5/8	<b>1545</b>	<b>1545</b>	Depth set
5 3/16			
3			Perf. top
2	<b>2535</b>	<b>Pulled</b>	Perf. bottom
Liners Used			Perf. top
			Perf. bottom

CASING CEMENTED \_\_\_\_\_ SIZE \_\_\_\_\_ No. Ft. \_\_\_\_\_ Date \_\_\_\_\_  
**Not cemented**  
COAL WAS ENCOUNTERED AT \_\_\_\_\_ FEET \_\_\_\_\_ INCHES  
\_\_\_\_\_ FEET Below coal INCHES \_\_\_\_\_ FEET \_\_\_\_\_ INCHES  
\_\_\_\_\_ FEET \_\_\_\_\_ INCHES \_\_\_\_\_ FEET \_\_\_\_\_ INCHES

Formation	Color	Hard or Soft	Top	Bottom	Oil, Gas or Water	Depth Found	Remarks
Sand			100	120			
Sand			190	250			
Little Dunkard Sand			405	430			
Big Dunkard Sand			515	530			
First Salt Sand			690	730			
Second Salt Sand			750	800			
Third Salt Sand			910	1115	<b>Water</b>	<b>820</b>	
Maxon Sand			1330	1370			
Little Lime			1440	1450			
Big Lime			1475	1550			
Big Injun Sand			1550	1656			
Fifty Foot Sand			1970	2060			
Thirty Foot Sand			2065	2175			
Gordon Stray Sand			2337	2350	<b>Gas</b>	<b>2297-2300</b>	
Gordon Sand			2365	2430			
Fifth Sand			2492	2525	<b>Gas</b>	<b>2514</b>	
		<b>Total Depth</b>		<b>2535</b>			



7-1-1923

Formation	Color	Hard or Soft	Top	Bottom	Oil, Gas or Water	Depth Found	Remarks

Date January 3, 1940

APPROVED Hope Natural Gas Company, Owner

By *[Signature]* General Supt.  
(Title) *[Signature]*