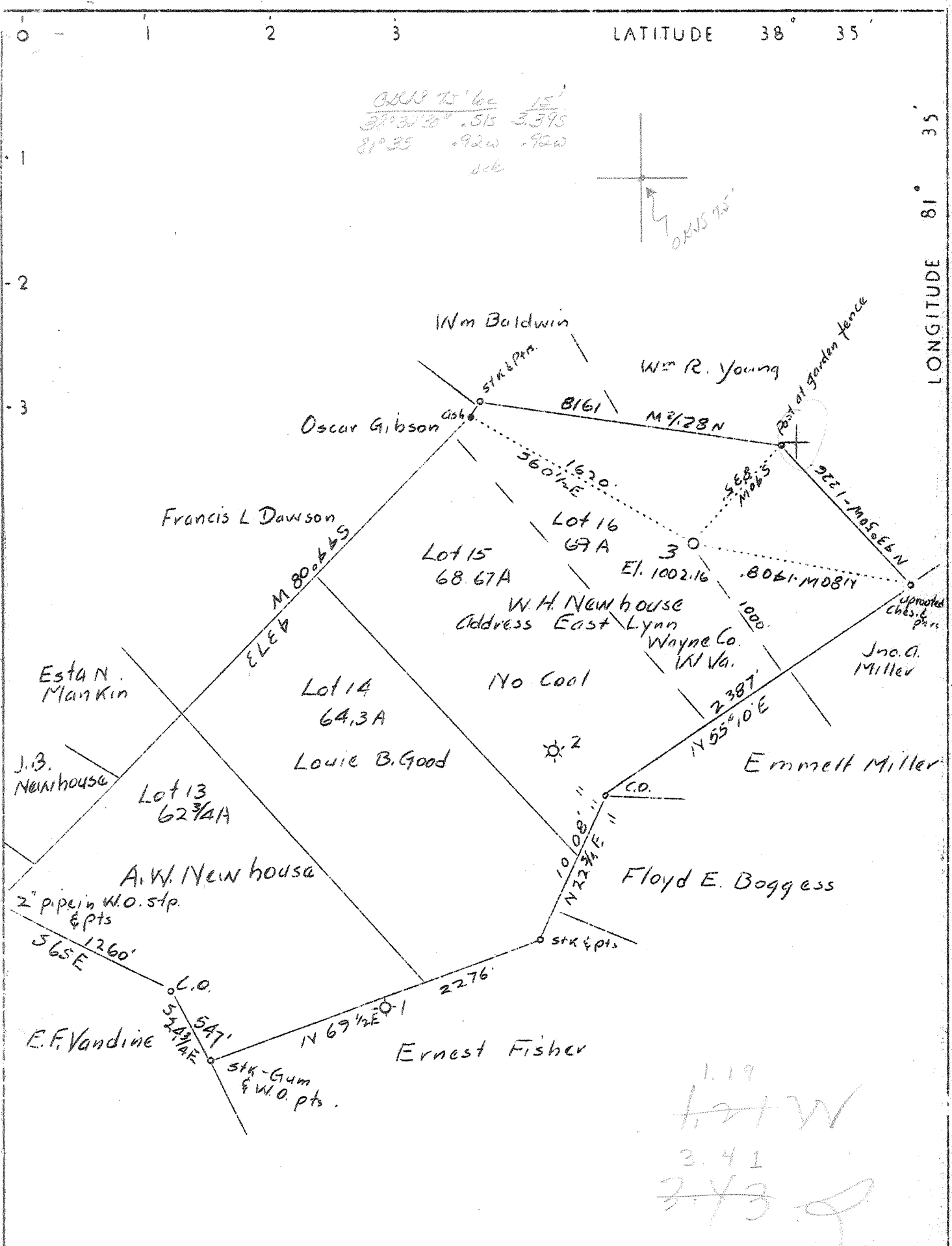
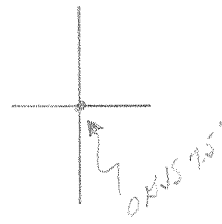


LATITUDE 38° 35'

LONGITUDE 81° 35'

$\frac{38^{\circ}35'15''}{37^{\circ}32'30'' .515 \quad 3395}$
 $\frac{81^{\circ}35' .922 \quad .922}{}$
etc



1.19
 1.21 W
 3.41
 3.73

Company	South Penn Oil Co.
Address	411-7th Ave., Pittsburgh, Pa.
Farm	T. H. Newhouse
Fract	Acres 500 Lease #61410
Well(Farm)No.	3 Serial No.
Quadrangle	Kenna SC
Kanawha County	
District	Poca
Engineer	E. C. Tabler
Engineer's Registration No.	
File No.	Drawing No.
Date	2/3/37 Scale 1" - 800'

STATE OF WEST VIRGINIA
 DEPARTMENT OF MINES
 OIL AND GAS DIVISION
 W E L L L O C A T I O N M A P
 File No. KAN-330D
 + Denotes location of well on U. S. Topographic Maps, scale 1 to 62,500, latitude and longitude lines being represented by border lines as shown.
 — Denotes one inch spaces on border line of original tracing.

WEST VIRGINIA DEPARTMENT OF MINES

OIL AND GAS DIVISION

WELL RECORD

Permit No. Kan-330

Gas Well

Kenna Quad.

CASING & TUBING

Company	South Penn Oil Co.	10	693'6"	Pulled 391'5"
Address	411 Seventh Ave., Pittsburgh, Pa.	8 $\frac{1}{2}$ "	2000	Pulled 8'
Farm	T.H.Newhouse Acres 500	7"	5092	
Location	Poca River			
Well No.	3	Elev. 1002.16		
District	Poca	County Kanawha		
Surface	W.H.Newhouse, et al, Sissonville, W.Va.		PACKER	
Drilling	Commenced	March 25, 1937		
	Completed	Aug. 2, 1937	Kind of 2 Steel csg. Shoe	
Volume	17,994,000 Cu.Ft.		Size 7" and 8 $\frac{1}{2}$ "	
			Depth 1991' and 5054'	

Formation Color		Top	Base	Result	Formation Color		Top	Base	Result
Red Rock		0	50		Oriskany		5151	5156	Gas
Slate & Shell		50	255		TOTAL DEPTH			5156	5156
Sand		255	300					110/10M.	7" O.D.
Red Rock		300	435					Op.	17,994,000
Slate & Shell		435	500						
Red Rock		500	525						
Lime Shells		525	550						
Red Rock		550	635						
Big Dunkard		635	690						
Slate		690	700						
Sand		700	740						
Slate		740	750						
Lime		750	865						
Lime	Black	865	950						
Gas Sand		950	975						
Slate		975	1030						
Sand		1030	1075						
Slate	Black	1075	1250						
Slate & Sand		1250	1330						
Salt Sand		1330	1630	Sh.Oil					
Slate		1630	1633	1375					
Maxon Sand		1633	1740	Water					
Little Lime		1740	1780	1385					
Big Lime		1780	1930	Water-					
Big Injun		1930	1985	Hole					
Slate		1985	1987	Full-					
Lime		1987	2110	1400					
Slate & Shells		2110	2375						
Shale	Brown	2375	2395						
Berea		2395	2400						
Lime	Blue	2400	2545						
Slate & Shells		2545	2670						
Lime		2670	2850						
Lime	Grey	2850	3100						
Shale	Brown	3100	3170						
Slate & Shells		3170	3500						
Shale	Brown	3500	3700						
Shale	Grey	3700	3850						
Shale	Brown	3850	3950						
Lime Shells		3950	4075						
Shale	Brown	4075	4225						
Slate & Shells		4225	4280						
Shale	Grey	4280	4750						
Shale	Black	4750	5033						
Corniferous		5033	5151	Gas					
				5059					
				Ins.for test					

WEST VIRGINIA DEPARTMENT OF MINES
OIL & GAS DIVISION
W E L L R E C O R D

Permit No.	Kan-330-D	Gas Well
Company	South Penn Natural Gas Co.	
Address	Union Trust Bldg., Parkersburg, W. Va.	
Farm	T.H. Newhouse	Acres 500
Location	Poca River	
Well No	3-D.D.	Elev. 1002.16
District	Poca	Kanawha County
Surface	W.H. Newhouse,	Sissonville, W. Va.
Mineral	" "	" "
Commenced	Sept. 3, 1941	
Completed	Sept. 12, 1941	
Flow	6/10ths M in 7" OD	
Volume	3,965,000 C.F.	

DRILLED DEEPER

Commenced Drilling		5156
Oriskany	5156	5188 -- not drilled thru
TOTAL DEPTH		5188

Gas Test before deepening		10/10 M 3" Opng., 492,000 C.F.
Gas	5164-14/10 M 3" Opng.	582,000 C.F. (after deepening)
Gas	5173-60/10 M 3" Opng.	1,205,000 C.F. " "
Gas	5179-6/10 M 7" O.D. 20#	3,965,000 C.F. " "