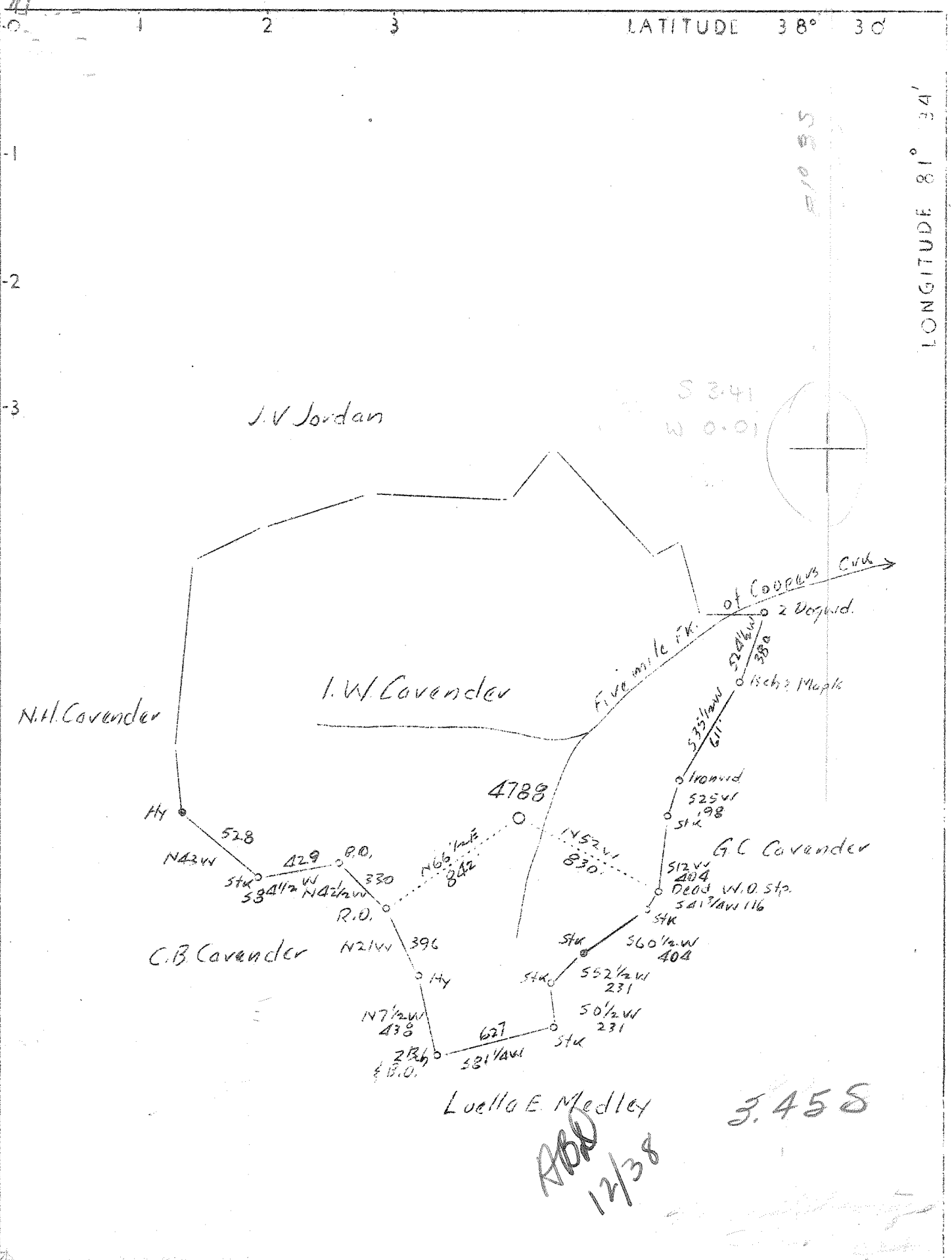


LATITUDE 38° 30'

LONGITUDE 81° 34'



Company	United Fuel Gas Co.
Address	Charleston, W.Va.
Farm	I.W.Cavender
Tract	Acres 160 Lease No. 38327
Well (Farm) No.	1 Serial No. 4788
Elevation (Spirit Level)	
Quadrangle	Charleston
County	Kanawha District Elk
Engineer	G.A.Cunningham
Engineer's Registration No.	659
File No.	64-65 Drawing No.
Date	Jan. 10, 1938 Scale 1"=660'

STATE OF WEST VIRGINIA  
 Department of Mines  
 OIL AND GAS DIVISION  
 CHARLESTON

WELL LOCATION MAP  
 File No. KAN-507

+ Denotes location of well on United States Topographic Maps, scale 1 to 62,500, latitude and longitude lines being represented by border lines as shown.

— Denotes one inch spaces on border line of original tracing.

6-6 192

WEST VIRGINIA DEPARTMENT OF MINES

OIL & GAS DIVISION

WELL RECORD

Permit No. Kan-507

Dry Well

Charleston Quad.

CASING & TUBING

Company	United Fuel Gas Co.	10-3/4	542	542
Address	Charleston, W. Va.	8-5/8	1826	1826
Farm	I. W. Cavender ACRES 160	7 O.D.	4902	4902
Location	Five Mile Fork of Coopers Creek			
Well No.	4788 ELEV. 914.9			Packer -
District	Elk County Kanawha			
Surface & Mineral	I. W. Cavender, Charleston, W. Va.	Coal Encountered:		
Drilling commenced	May 16, 1938	Feet	Inches	
Drilling completed	August 25, 1938	363	24	
Date shot	8-30-38 - Depth 4997	490	60	
Open Flow	-			
Volume	Not enough to test			
Rock Pressure	-			
Fresh Water	-			
Salt Water	1095			

Formation	Color	Top	Base	Result	Formation	Color	Top	Base	Result
Red Rock		0	60		Oriskany		4997	5032	Sh. G-5005
Blue Slate		60	120		Lime Sandy		5032	5046	
Blue Lime		120	140		Sand		5046	5068	
Red Rock		140	270		Lime		5068	5103	
Blue Slate		270	320		Total Depth			5103	
Sand		320	340						
Slate		340	363						
Coal		363	365						
Slate & Shells		365	425						
Sand		425	480						
Slate & Shells		480	490						
Coal		490	495	W-1095					
Sand (hard)		495	595						
Slate & Shells		595	765						
Sand		765	835						
Slate		835	910						
Sand		910	970						
Slate		970	980						
Sand		980	1005						
Slate		1005	1015						
Salt Sand		1015	1378	W-1095					
Slate & Shells		1378	1420						
Sand		1420	1487						
Slate & Shells		1487	1537						
Maxon Sand		1537	1577						
Little Lime		1577	1607						
Slate		1607	1614						
Shell		1614	1620						
Pencil Cave		1620	1625						
Big Lime		1625	1775						
Keener Sand		1775	1782						
Injun Sand		1782	1820						
Slate & Shells		1820	2550	Sh. G-2080					
White Slate		2550	2640						
Slate & Shells		2640	3465						
Brown Shale		3465	3475						
Slate & Shells		3475	3750						
Brown Shale		3750	3760	Sh. G-3750					
Slate & Shells		3760	3900						
Brown Shale		3900	4050						
Slate & Shells		4050	4130						
White Slate		4130	4540						
Pink Slate		4540	4560						
White Slate		4560	4625						
Brown Shale		4625	4725						
Dark Slate		4725	4800						
White Slate		4800	4875						
Black Slate		4875	4886						
Corniferous Lime		4886	4997						