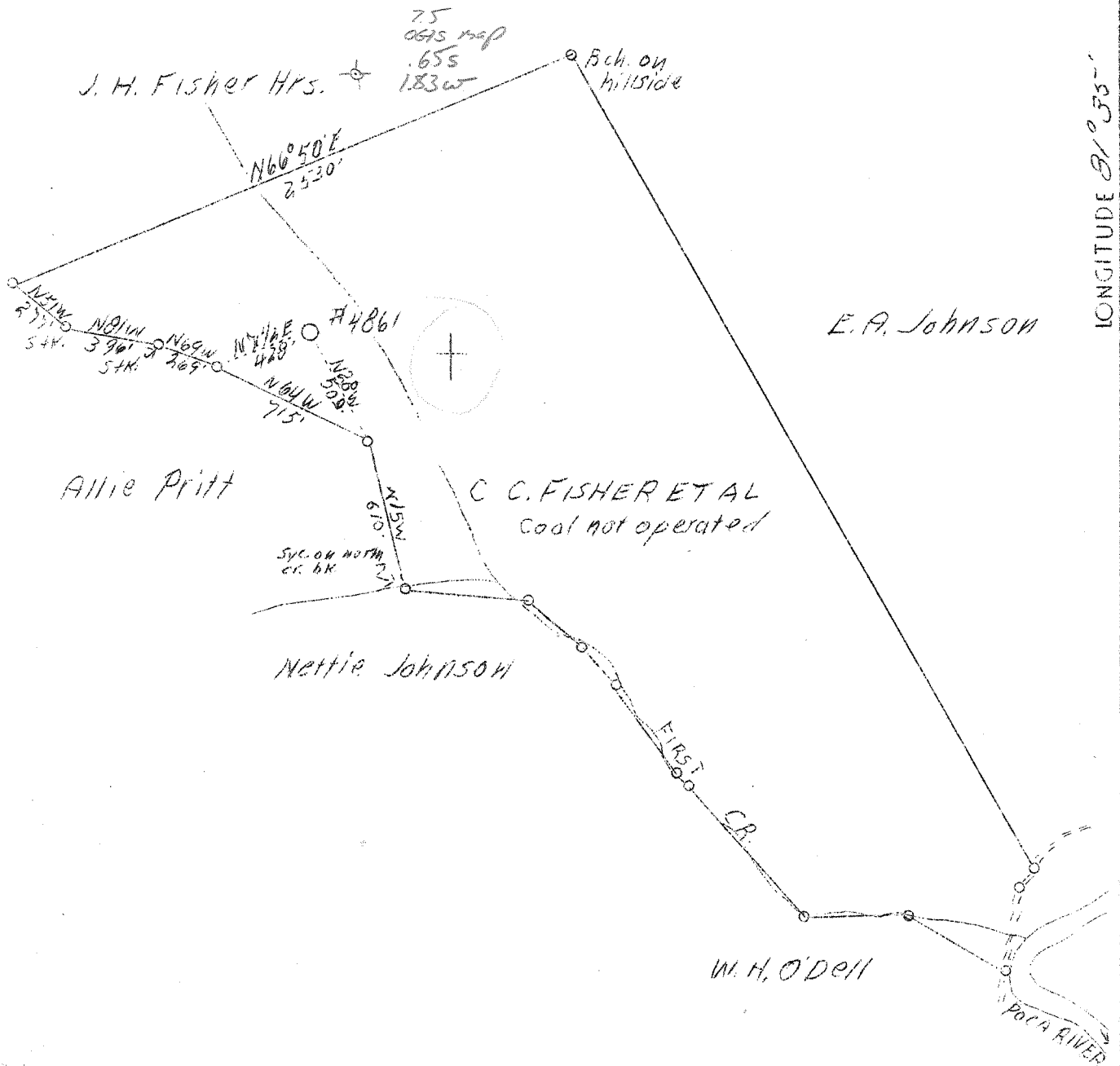


38° 32' 30"
 LATITUDE 38° 35'

LONGITUDE 81° 35'
 81° 37' 30"



New location

| | |
|-----------------|---------------------|
| Company | United Fuel Gas Co. |
| Address | Charleston, W. Va. |
| Address Farm | C. C. Fisher Etal |
| Acres | 136 |
| Lease No. | 40030 |
| Serial No. | 4861 |
| Well (Farm) No. | 1 |
| Quadrangle | Kenna/Sissonville |
| County | Kanawha |
| District | Poca |
| Eng. | G. A. Cunningham |
| Eng. Reg. No. | 659 |
| File No. | 60 - 71 |
| Date | 8/29/39 |
| Scale | 1" = 660' |

STATE OF WEST VIRGINIA
 Department of Mines
 OIL AND GAS DIVISION
 Charleston

WELL LOCATION MAP

File No. Kon-659

x Denotes location of well on U.S. Topographic Maps, scale 1 to 62,500, latitude and longitude lines being represented by border lines as shown.

-- Denotes one inch spaces on border line of original tracing.

WEST VIRGINIA DEPARTMENT OF MINES
OIL & GAS DIVISION
WELL RECORD

Permit No. Kan-659
- Quad.

Gas Well

CASING & TUBING

| | | | | |
|---------------|---------------------------------|-------|------|------|
| Company | United Fuel Gas Co. | 13 | 672 | 672 |
| Address | Charleston, W. Va. | 10 | 1766 | 1766 |
| Farm | C. C. Fisher, et al ACRES 136 | 8-5/8 | 1997 | 1997 |
| Location | First Creek | 7 | 4947 | 4947 |
| Well No. | 4861 ELEV. 862.3 | | | |
| District | Poca - Kanawha County | | | |
| Surface | C.C. Fisher, Sissonville, W.Va. | | | |
| Mineral | Same et al | | | |
| Commenced | Oct. 9, 1939 | | | |
| Completed | Feb. 14, 1940 | | | |
| Shot | 2/20/40 - Depth 5030 | | | |
| Open Flow | - | | | |
| Volume | Gas Well 4132 Mcf - Vol XUE | | | |
| Rock Pressure | - | | | |
| Fresh Water | 100 | | | |
| Salt Water | 1350 and 1940 | | | |

| | | | | | | |
|--------------|------|------|---------------------------|------|---------|-------------------|
| Surface | 0 | 14 | Injun Sand | 1905 | 1954 | FW 1940 |
| Clay | 14 | 34 | Slate | 1954 | 1993 | |
| Red Rock | 34 | 44 | Shell | 1993 | 2000 | |
| Slate | 44 | 90 | Slate & Shells | 2000 | 2378 | |
| Sand | 90 | 120 | Brown Shale | 2378 | 2384 | |
| Slate | 120 | 170 | Berea | 2384 | 2392 | |
| Red Rock | 170 | 187 | Slate&Shells | 2392 | 3610 | |
| Slate | 187 | 215 | Brown Shale | 3610 | 3700 | |
| Red Rock | 215 | 251 | Slate&Shells | 3700 | 4016 | |
| Slate | 251 | 260 | Brown Shale | 4016 | 4170 | |
| Red Rock | 260 | 326 | Slate | 4170 | 4621 | |
| Slate | 326 | 338 | Brown Shale | 4621 | 4874 | |
| Sand | 338 | 364 | Black Shale | 4874 | 4934 | |
| Red Rock | 364 | 410 | Corniferous Lime | 4934 | 5032 | Sh.G 5032 |
| Slate | 410 | 445 | Oriskany Sand | 5032 | 5054 | G.Pay 5032-45 |
| Sand | 445 | 462 | Total Depth | | 5054 | |
| Slate | 462 | 482 | | | | |
| Sand | 482 | 502 | Commenced drilling deeper | | 2/7/40 | |
| Red Rock | 502 | 512 | Completed | | 2/14/40 | |
| Slate | 512 | 522 | | | | |
| Red Rock | 522 | 557 | Original Depth | | 5054 | |
| Sand | 557 | 603 | Oriskany Sand | 5032 | 5072 | Gas Pay 5032-5068 |
| Slate | 603 | 616 | | | | 5068 |
| Red Rock | 616 | 627 | Total Depth | | 5072 | |
| Slate | 627 | 637 | | | | |
| Sand | 637 | 724 | | | | |
| Slate | 724 | 775 | | | | |
| Sand | 775 | 800 | | | | |
| Slate | 800 | 837 | | | | |
| Sand | 837 | 856 | | | | |
| Slate | 856 | 912 | | | | |
| Sand | 912 | 950 | | | | |
| Slate | 950 | 1000 | | | | |
| Sand | 1000 | 1038 | | | | |
| Slate | 1038 | 1140 | | | | |
| Sand | 1140 | 1160 | | | | |
| Slate&Shells | 1160 | 1282 | | | | |
| Sand | 1282 | 1305 | | | | |
| Slate | 1305 | 1325 | | | | |
| Salt Sand | 1325 | 1530 | FW 1350 | | | |
| Slate | 1530 | 1536 | | | | |
| Sand | 1536 | 1698 | | | | |
| Slate | 1698 | 1700 | | | | |
| Maxon Sand | 1700 | 1732 | | | | |
| Slate | 1732 | 1735 | | | | |
| Little Lime | 1735 | 1755 | | | | |
| Pencil Cave | 1755 | 1760 | Gas 1838-1839 | | | |
| Big Lime | 1760 | 1905 | Gas 1850-1861 | | | |