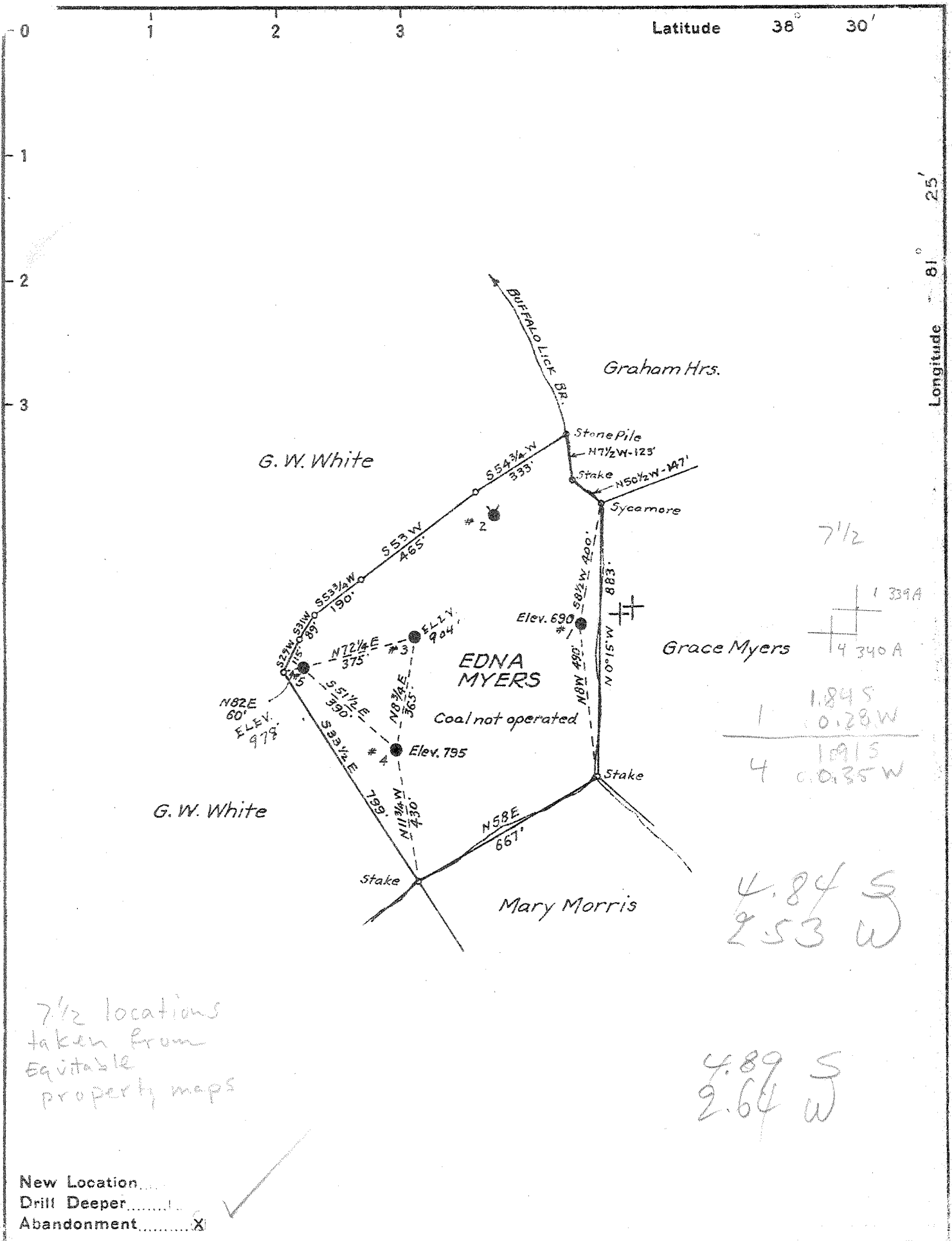


38° 27' 30"



Company W. S. EDWARDS OIL & GAS CO.
 Address CHARLESTON, W. VA.
 Farm EDNA MYERS
 Tract _____ Acres 21 Lease No. _____
 Well (Farm) No. 1 & 4 Serial No. _____
 Elevation (BAROMETER) AS SHOWN
 Quadrangle CLENDENIN
 County KANAWHA District ELK
 Engineer G. A. Cunningham
 Engineer's Registration No. 659
 File No. _____ Drawing No. _____
 Date OCT. 1, 1941 Scale 1" = 400'

STATE OF WEST VIRGINIA
 DEPARTMENT OF MINES
 OIL AND GAS DIVISION
 CHARLESTON

WELL LOCATION MAP
 FILE NO. KAN-339A & 340A
(3343A & 344 A's)

+ Denotes location of well on United States Topographic Maps, scale 1 to 62,500, latitude and longitude lines being represented by border lines as shown.

- Denotes one inch spaces on border line of original tracing.