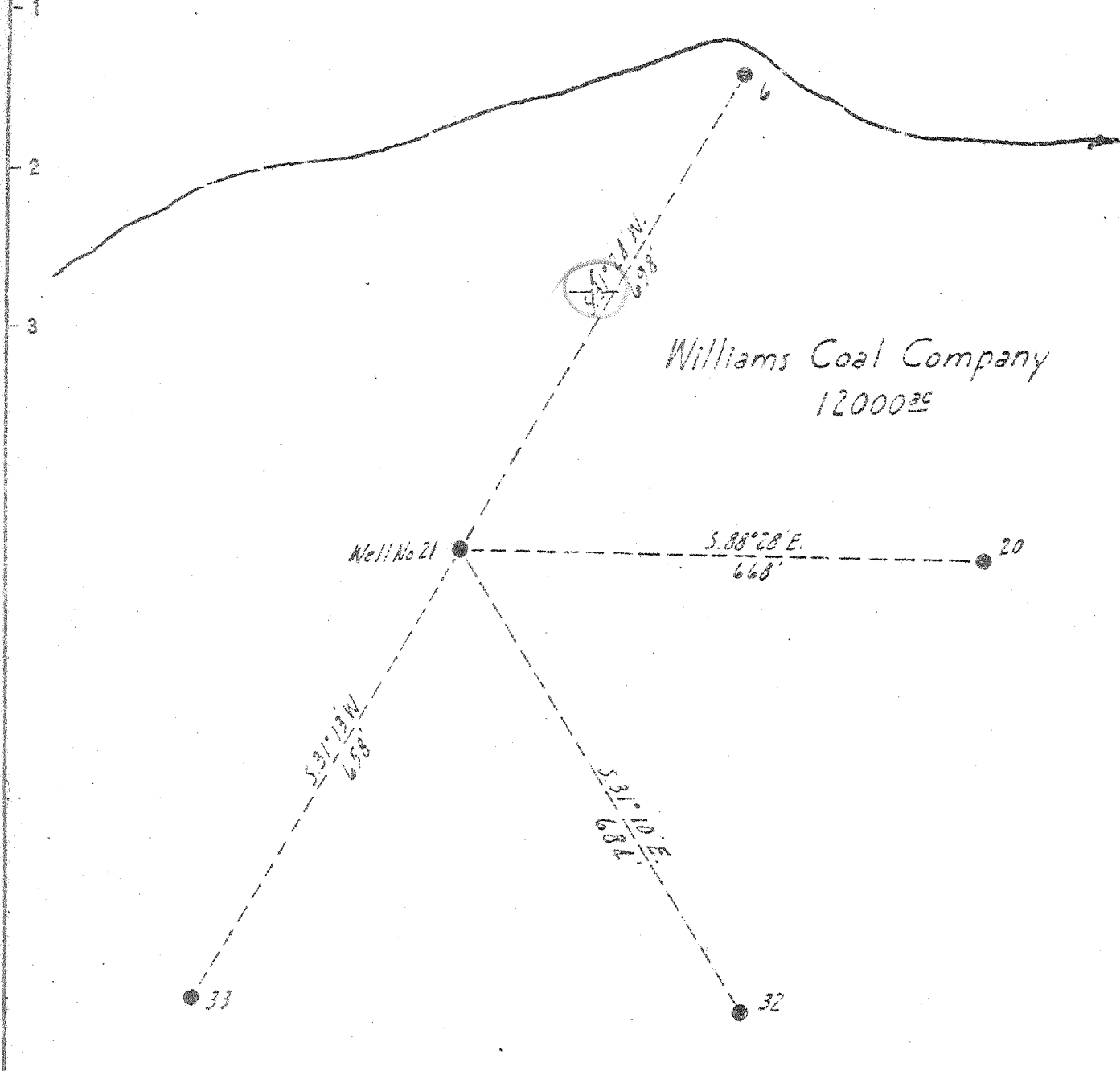


Latitude 38 10

Longitude 81 25



New Location
 Drill Deeper
 Abandonment

✓ MAY 28 1946

3.83 W
 3.03 D

Company The Pure Oil Company
 Address Newark, Ohio Box 551
 Farm Williams Coal Company
 Tract Acres 12000 Lease No. 5012
 Well (Farm) No. 21 Serial No. 208
 Elevation (Spirit Level) 1243
 Quadrangle Montgomery
 County Kanawha District Cabin Creek
 Engineer J. B. Hunter
 Engineer's Registration No. Ohio-2912
 File No. _____ Drawing No. _____
 Date April 3, 1946 Scale 1" = 200'

STATE OF WEST VIRGINIA
 DEPARTMENT OF MINES
 OIL AND GAS DIVISION
 CHARLESTON

WELL LOCATION MAP
 FILE NO. KAN-446-A

+ Denotes location of well on United States Topographic Maps, scale 1 to 62,500, latitude and longitude lines being represented by border lines as shown.

- Denotes one inch spaces on border line of original tracing.

601280



STATE OF WEST VIRGINIA
DEPARTMENT OF MINES
OIL AND GAS DIVISION

1158

WELL RECORD

Permit No. 446-A

Oil or Gas Well (KIND)

Company The Pure Oil Company
Address Box 551 - Newark, Ohio
Farm Williams Coal Company Acres 12,000
Location (waters) Cabin Creek
Well No. 21 Elev. 1243'
District Cabin Creek County Kanawha
The surface of tract is owned in fee by Shonk Land Company
Mr. D. C. Shonk Address Dawes, W. Va.
Mineral rights are owned by Shonk Land Company
Mr. D. C. Shonk Address Dawes, W. Va.
Drilling commenced February 28, 1916
Drilling completed June 1, 1916
Date Shot 6-9-16 From 2885' To 2905'
With 70 quarts

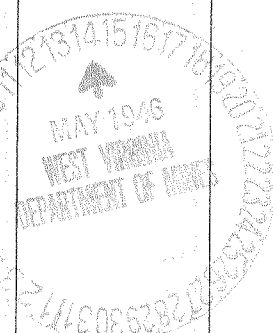
| Casing and Tubing | Used in Drilling | Left in Well | Packers |
|-------------------|------------------|--------------|----------------|
| Size | | | |
| 16 | | | Kind of Packer |
| 13 | | | |
| 10 | 708' | 708' | Size of |
| 8 1/4 | 1615' | None | |
| 6 5/8 | 2263' | 2263' | Depth set |
| 5 3/16 | | | |
| 3 | | | Perf. top |
| 2 | | | Perf. bottom |
| Liners Used | | | Perf. top |
| | | | Perf. bottom |

Open Flow /10ths Water in _____ Inch
/10ths Merc. in _____ Inch
Volume _____ Cu. Ft.
Rock Pressure _____ lbs. _____ hrs.
Oil _____ bbls., 1st 24 hrs.
Fresh water _____ feet _____ feet
Salt water _____ feet _____ feet

CASING CEMENTED _____ SIZE _____ No. Ft. _____ Date _____

COAL WAS ENCOUNTERED AT 185 FEET 60 INCHES
672 FEET 24 INCHES 698 FEET 24 INCHES
800 FEET 36 INCHES FEET INCHES

| Formation | Color | Hard or Soft | Top | Bottom | Oil, Gas or Water | Depth Found | Remarks |
|-----------------|-------|--------------|------|--------|-------------------|-------------|-------------|
| Sand | | | 0 | 45 | | | |
| Slate | | | 45 | 55 | | | |
| Sand | | | 55 | 90 | | | |
| Slate | | | 90 | 120 | | | |
| Sand | | | 120 | 185 | | | |
| Coal | | | 185 | 190 | Water | 185-190 | Hole full |
| Sand | | | 190 | 250 | | | |
| Slate | | | 250 | 300 | | | |
| Sand | | | 300 | 405 | | | |
| Slate & Shells | | | 405 | 500 | | | |
| Sand | | | 500 | 575 | | | |
| Slate | | | 575 | 605 | | | |
| Sand | | | 605 | 650 | | | |
| Slate | | | 650 | 672 | | | |
| Coal | | | 672 | 674 | | | |
| Sand | | | 674 | 698 | | | |
| Coal | | | 698 | 700 | | | |
| Sand | | | 700 | 775 | | | |
| Slate | | | 775 | 800 | | | |
| Coal | | | 800 | 803 | | | |
| Sand | | | 803 | 830 | | | |
| Slate | | | 830 | 885 | | | |
| Sand | | | 885 | 920 | | | |
| Sand | | | 920 | 932 | | | |
| Lime | | | 932 | 990 | | | |
| Sand | | | 990 | 1050 | | | |
| Slate | | | 1050 | 1055 | | | |
| Sand | | | 1055 | 1110 | | | |
| Slate | | | 1110 | 1112 | | | |
| Grampus & Slate | | | 1112 | 1210 | | | |
| SAIF SAND | | | 1210 | 1275 | | | |
| Slate | | | 1275 | 1585 | | | |
| Lime | | | 1585 | 1605 | Water | 1365' | 1 blr. hour |
| Slate | | | 1605 | 1625 | | | |
| Sand | | | 1625 | 1635 | | | |
| Slate | | | 1635 | 1660 | | | |
| Lime | | | 1660 | 1675 | | | |
| Slate | | | 1675 | 1685 | | | |



| Formation | Color | Hard or Soft | Top | Bottom | Oil, Gas or Water | Depth Found | Remarks |
|---------------------|-------|--------------|------|--------|-------------------|-------------|---------|
| Lime | | | 1685 | 1715 | | | |
| Slate | | | 1715 | 1725 | | | |
| Red Rock | | | 1725 | 1760 | | | |
| Lime | | | 1760 | 1775 | | | |
| Slate | | | 1775 | 1785 | | | |
| Sand | | | 1785 | 1815 | | | |
| Slate | | | 1815 | 1835 | | | |
| Sand | | | 1835 | 1850 | | | |
| Lime | | | 1850 | 1870 | | | |
| Slate | | | 1870 | 1910 | | | |
| Lime | | | 1910 | 1925 | | | |
| Slate | | | 1925 | 1960 | | | |
| Lime | | | 1960 | 1970 | | | |
| Slate | | | 1970 | 1995 | | | |
| Sand | | | 1995 | 2005 | | | |
| Slate | | | 2005 | 2010 | | | |
| Lime | | | 2010 | 2050 | | | |
| Slate | | | 2050 | 2055 | | | |
| Lime | | | 2055 | 2070 | | | |
| Slate | | | 2070 | 2115 | | | |
| Lime | | | 2115 | 2145 | | | |
| Slate | | | 2145 | 2150 | | | |
| Lime | | | 2150 | 2155 | P-776 | | |
| Slate & Lime | | | 2155 | 2190 | P-7793 | | |
| Little Lime | | | 2190 | 2230 | | | |
| Pencil Cave | | | 2230 | 2233 | | | |
| BIG LIME | | | 2233 | 2426 | TT 2491 | | |
| BIG INJUN | | | 2426 | 2461 | P-2340 | | |
| Slate & Shells | | | 2461 | 2860 | | | |
| HEREA GRIT | | | 2860 | 2881 | | | |
| 1st Pay | | | 2881 | 2904 | | | |
| 2nd Pay | | | 2904 | 2905 | | | |
| Bottom | | | 2905 | 2905 | | | |
| Total Depth - 2905' | | | | | | | |

Date May 13, 194 6

The Pure Oil Company
Box 551, Newark, Ohio

APPROVED

, Owner

By

Fred Hillis
Division Superintendent