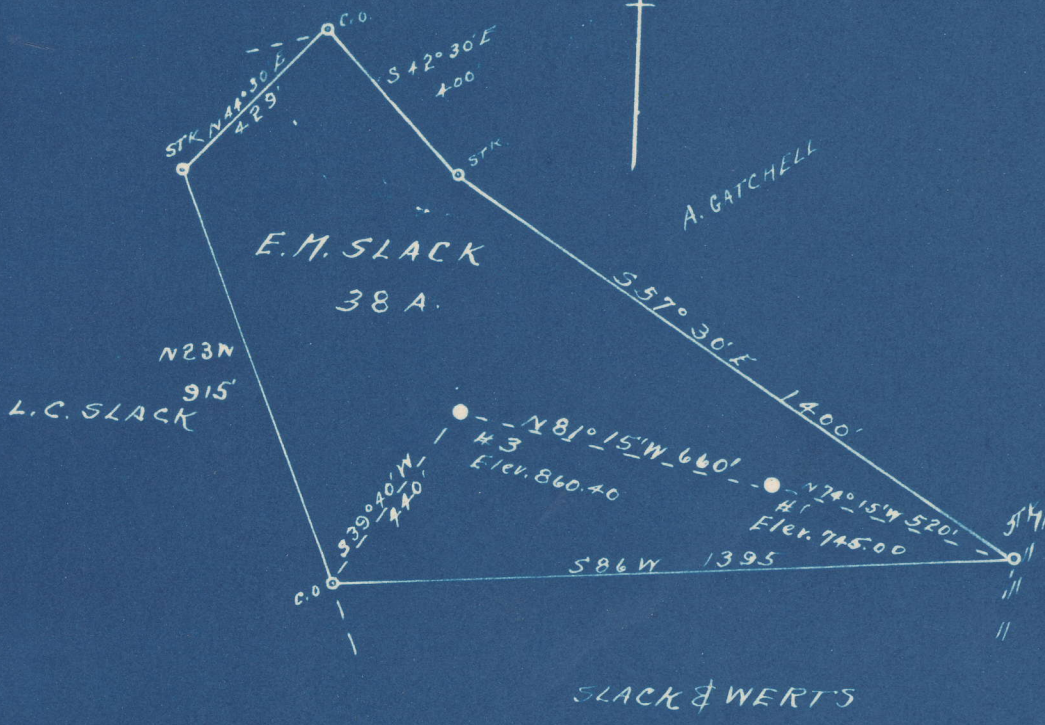


Latitude 38° 25'

Longitude 81° 25'



#3	0.65	S
	4.48	W
#1	0.67	S
	4.44	W

New Location..   
 Drill Deeper.....   
 Abandonment.....

Company OKMULGEE SUPPLY CORP.  
 Address OKMULGEE, OKLA.  
 Farm E. M. SLACK  
 Tract \_\_\_\_\_ Acres 38 Lease No. \_\_\_\_\_  
 Well (Farm) No. 51-3 Serial No. WC  
 Elevation (Spirit Level) #1- 745.00 - #2- 860.40  
 Quadrangle CLENDENNIN  
 County KANAWHA District ELK  
 Engineer L. F. Dye  
 Engineer's Registration No. 804  
 File No. \_\_\_\_\_ Drawing No. \_\_\_\_\_  
 Date 7-23-48 Scale 1" = 400'

STATE OF WEST VIRGINIA  
 DEPARTMENT OF MINES  
 OIL AND GAS DIVISION  
 CHARLESTON

WELL LOCATION MAP  
 FILE NO. KAN-509-A-#3  
KAN-519-A-#1

+ Denotes location of well on United States Topographic Maps, scale 1 to 62,500, latitude and longitude lines being represented by border lines as shown.  
 - Denotes one inch spaces on border line of original tracing.

6-0-  
 6-0-157

L. C. SLACK NO. 3 WELL.

509A

Elk District, Kanawha County, W. Va.  
By Okmulgee Supply Corp., Box 911, Okmulgee, Okla.  
Abandoned under permit Kan-.....-A?  
On 57 acres, on Indian Creek.  
Elevation, 935' L.  
Drilling commenced in 1913.  
Shot June 26, 1913, at 1932-1939'; Apr. 1, 1914, at 2087-2093';  
and Jan. 28, 1940, at 2084-2091'.  
8 $\frac{5}{8}$ " casing, 415'; 7" O. D., 1700'; all left in.  
Oil well. Record to Dept. of Mines stamped Aug. 30, 1948.  
Record to RCT from Mrs. Griffith Sept. 3, 1948. Old File No. 1305.

	Top.	Bottom.
Salt Sand	972	- 1572
Maxton Sand	1575	- 1628
Big Lime	1673	- 1823
Big Injun Sand	1823	- 1848
Squaw Sand (oil and gas, 1933')	1931	- 1951
Weir Sand (oil and gas, 2088-2091')	2064	- ....
Total depth		2095

Completed no inspection



305

STATE OF WEST VIRGINIA  
DEPARTMENT OF MINES  
OIL AND GAS DIVISION

WELL RECORD

Permit No. 589A

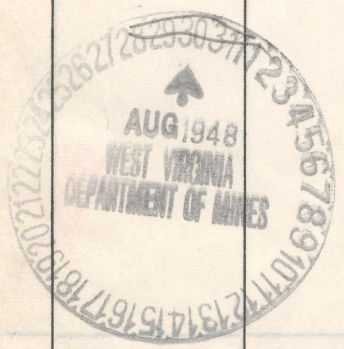
Oil or Gas Well X (KIND)

Company OKNULGEE SUPPLY CORP.  
 Address Box 911 - Okmulgee, Okla  
 Farm L. C. Slack (L.M.) Acres 57  
 Location (waters) Indian Creek  
 Well No. No. 3 Elev. 935.  
 District Elk County Kanawha  
 The surface of tract is owned in fee by \_\_\_\_\_  
 Address \_\_\_\_\_  
 Mineral rights are owned by \_\_\_\_\_  
 Address \_\_\_\_\_  
 Drilling commenced 1913  
 Drilling completed \_\_\_\_\_  
 Date Shot 6/26/13 From 1932 To 1939  
 With 4/1/14 2087 2093  
 Open Flow 1/28/40 /10ths Water in 2084 2091 Inch  
 /10ths Merc. in \_\_\_\_\_ Inch  
 Volume \_\_\_\_\_ Cu. Ft.  
 Rock Pressure \_\_\_\_\_ lbs. \_\_\_\_\_ hrs.  
 Oil \_\_\_\_\_ bbls., 1st 24 hrs.  
 Fresh water \_\_\_\_\_ feet \_\_\_\_\_ feet  
 Salt water \_\_\_\_\_ feet \_\_\_\_\_ feet

Casing and Tubing	Used in Drilling	Left in Well	Packers
Size			
16			Kind of Packer
13			
10			Size of
8 1/4	8-5/8	415	all
6 3/4	7" OD	1700	all
5 3/16			
3			Perf. top
2			Perf. bottom
Liners Used			Perf. top
			Perf. bottom

CASING CEMENTED \_\_\_\_\_ SIZE \_\_\_\_\_ No. Ft. \_\_\_\_\_ Date \_\_\_\_\_  
 COAL WAS ENCOUNTERED AT \_\_\_\_\_ FEET \_\_\_\_\_ INCHES  
 \_\_\_\_\_ FEET \_\_\_\_\_ INCHES FEET \_\_\_\_\_ INCHES  
 \_\_\_\_\_ FEET \_\_\_\_\_ INCHES FEET \_\_\_\_\_ INCHES

Formation	Color	Hard or Soft	Top	Bottom	Oil, Gas or Water	Depth Found	Remarks
Salt Sand			972	1572			
Maxon			1575	1628			
Big Lime			1673	1823			
Big Injun			1823	1848			
Squaw			1931	1951	Oil and Gas 1933'		
Weir			2064		Oil and Gas 2088 - 2091		
Total Depth				2095			



SEP - 3 1948

