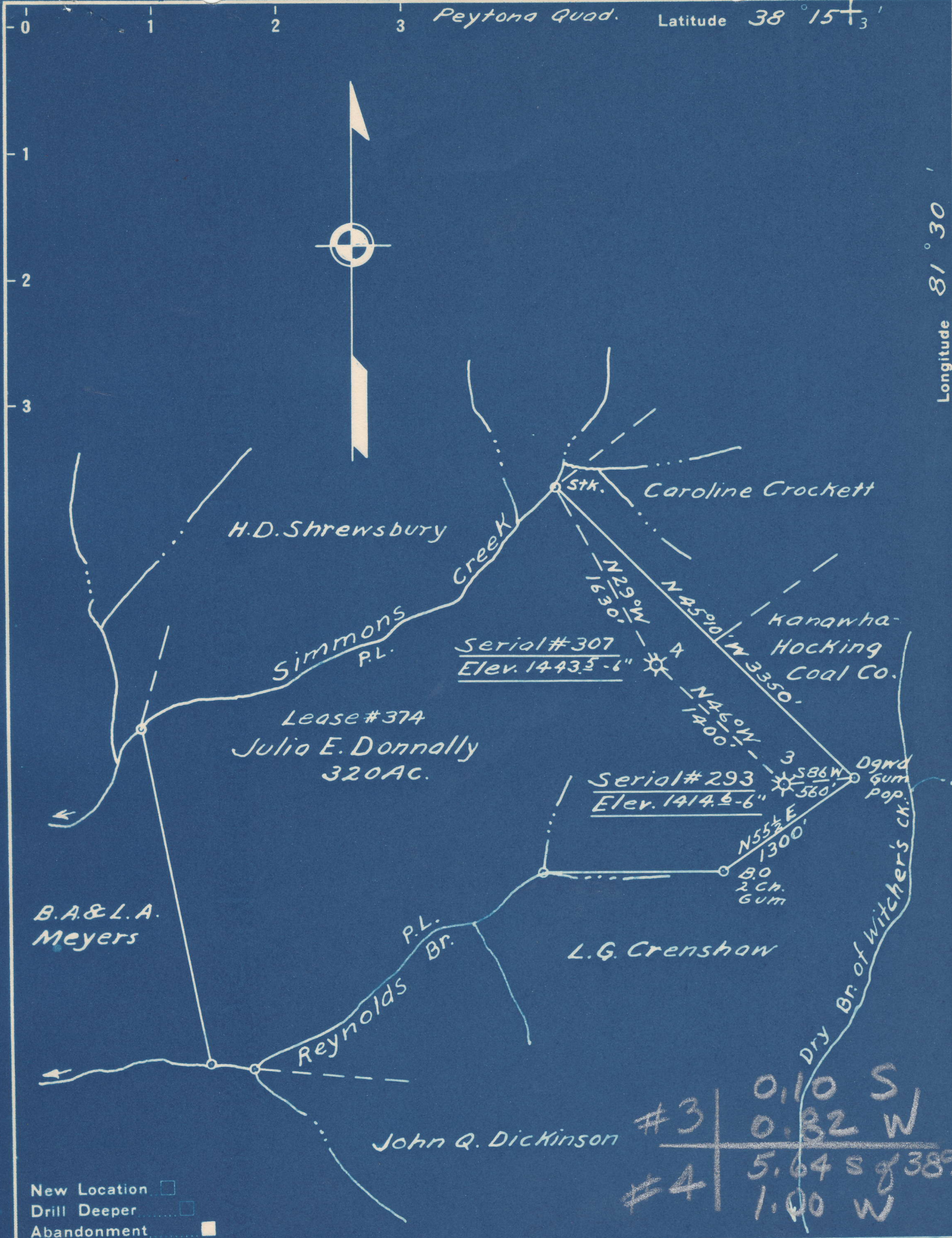


Charleston Quad.

Peytona Quad.

Latitude 38° 15' 3"



- New Location
- Drill Deeper
- Abandonment

Company Owens, Libbey-Owens Gas Dept.
 Address Box 4158 Charleston 4 W. Va.
 Farm Julia E. Donnally
 Tract _____ Acres 320 Lease No. 374
 Well (Farm) No. 3 & 4 Serial No. 293 & 307
 Elevation (Spirit Level) #3 - 1414.5 Top 6"
#4 - 1443.5 "
 Quadrangle Charleston & Peytona
 County Kanawha District Malden
 Engineer T.S. Flourney #3 NE
 Engineer's Registration No. 269 #4 SE
 File No. _____ Drawing No. _____
 Date Oct. 18, 1949 Scale 1" = 1000'

STATE OF WEST VIRGINIA
 DEPARTMENT OF MINES
 OIL AND GAS DIVISION
 CHARLESTON

WELL LOCATION MAP

FILE NO. KAN-648-A-#3
KAN-649-A-#4

+ Denotes location of well on United States Topographic Maps, scale 1 to 62,500, latitude and longitude lines being represented by border lines as shown.

- Denotes one inch spaces on border line of original tracing.

6-6 214



STATE OF WEST VIRGINIA
DEPARTMENT OF MINES
OIL AND GAS DIVISION

1422

Ab 649-A

WELL RECORD

Permit No. _____ Oil or Gas Well Gas
(KIND)

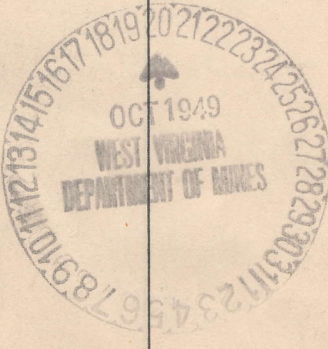
Company OWENS, LIBNEY-OWENS GAS DEPARTMENT
 Address P. O. Box 4158, Charleston 4, W. Va.
 Farm Julia E. Donally Acres 320
 Location (waters) _____
 Well No. QLO #307, Farm #4 Elev. 1443.5
 District Malden County Kanawha
 The surface of tract is owned in fee by _____
 Address _____
 Mineral rights are owned by Julia E. Donally Heirs
 Address Gallipolis, Ohio
 Drilling commenced 11-28-27
 Drilling completed 1-2-28
 Date Shot _____ From _____ To _____
 With _____
 Open Flow _____ /10ths Water in _____ Inch
 _____ /10ths Merc. in _____ Inch
 Volume 519 M (236 Linn & 283 Weir) Cu. Ft.
 Rock Pressure 31 Hrs. 2087 278 Lbs. 2087
 Oil _____ bbls., 1st 24 hrs.
 Fresh water _____ feet _____ feet
 Salt water _____ feet _____ feet

| Casing and Tubing | Used in Drilling | Left in Well | Packers |
|-------------------|------------------|--------------|--------------------------|
| Size | | | Kind of Packer |
| 16 | | | King Gas Anchor |
| 13 | | | Size of |
| 10 | 16' | 16' | 3" x 6-5/8" |
| 8 1/4 | 722' | 722' | Depth set |
| 6 1/2 | 1905' | 1905' | 2050 |
| 5 3/16 | | | Perf. top <u>2357</u> |
| 3 | 2370' | 2370' | Perf. bottom <u>2352</u> |
| 2 | | | Perf. top <u>2309</u> |
| Liners Used | | | Perf. bottom <u>2304</u> |

CASING CEMENTED _____ SIZE _____ No. Ft. _____ Date _____

COAL WAS ENCOUNTERED AT _____ FEET _____ INCHES
 _____ FEET _____ INCHES FEET _____ INCHES
 _____ FEET _____ INCHES FEET _____ INCHES

| Formation | Color | Hard or Soft | Top | Bottom | Oil, Gas or Water | Depth Found | Remarks |
|----------------|-------|--------------|------|--------|-------------------|-------------|-----------|
| Surface | | | 0 | 16 | | | |
| Sand | | | 16 | 115 | | | |
| Coal | | | 115 | 118 | | | |
| Slate | | | 118 | 170 | | | |
| Sand | | | 170 | 263 | | | |
| Slate | | | 263 | 274 | | | |
| Coal | | | 274 | 277 | | | |
| Slate | | | 277 | 318 | | | |
| Coal | | | 318 | 320 | | | |
| Sand | | | 320 | 425 | | | |
| Slate | | | 425 | 446 | | | |
| Coal | | | 446 | 450 | | | |
| Sand | | | 450 | 464 | | | |
| Slate | | | 464 | 494 | | | |
| Sand | | | 494 | 650 | | | |
| Coal | | | 650 | 653 | | | |
| Slate | | | 653 | 750 | | | |
| Sand | | | 750 | 943 | | | |
| Slate & Shells | | | 943 | 1228 | | | |
| Salt Sand | | | 1228 | 1470 | Water | 1315 | Hole full |
| Slate | | | 1470 | 1482 | | | |
| Salt Sand | | | 1482 | 1668 | | | |
| Slate | | | 1668 | 1678 | | | |
| Red Rock | | | 1678 | 1688 | | | |
| Lime | | | 1688 | 1715 | | | |
| Red Rock | | | 1715 | 1723 | | | |
| Slate | | | 1723 | 1750 | | | |
| Maxton Sand | | | 1750 | 1816 | | | |
| Slate | | | 1816 | 1821 | | | |
| Little Lime | | | 1821 | 1848 | | | |
| Slate | | | 1848 | 1872 | | | |
| Pencil Cave | | | 1872 | 1876 | | | |
| Big Lime | | | 1876 | 2055 | Gas | 1998 & 2022 | 838 M |
| Injun Sand | | | 2055 | 2106 | | | |
| Slate & Shells | | | 2106 | 2281 | | | |
| Weir Sand | | | 2281 | 2341 | Gas | 2281-2288 | 500 M |
| Slate & Shell | | | 2341 | 2370 | Gas | 2309-2312 | 565 M |
| Total Depth | | | | 2370 | | | |



JAN 20 1950

