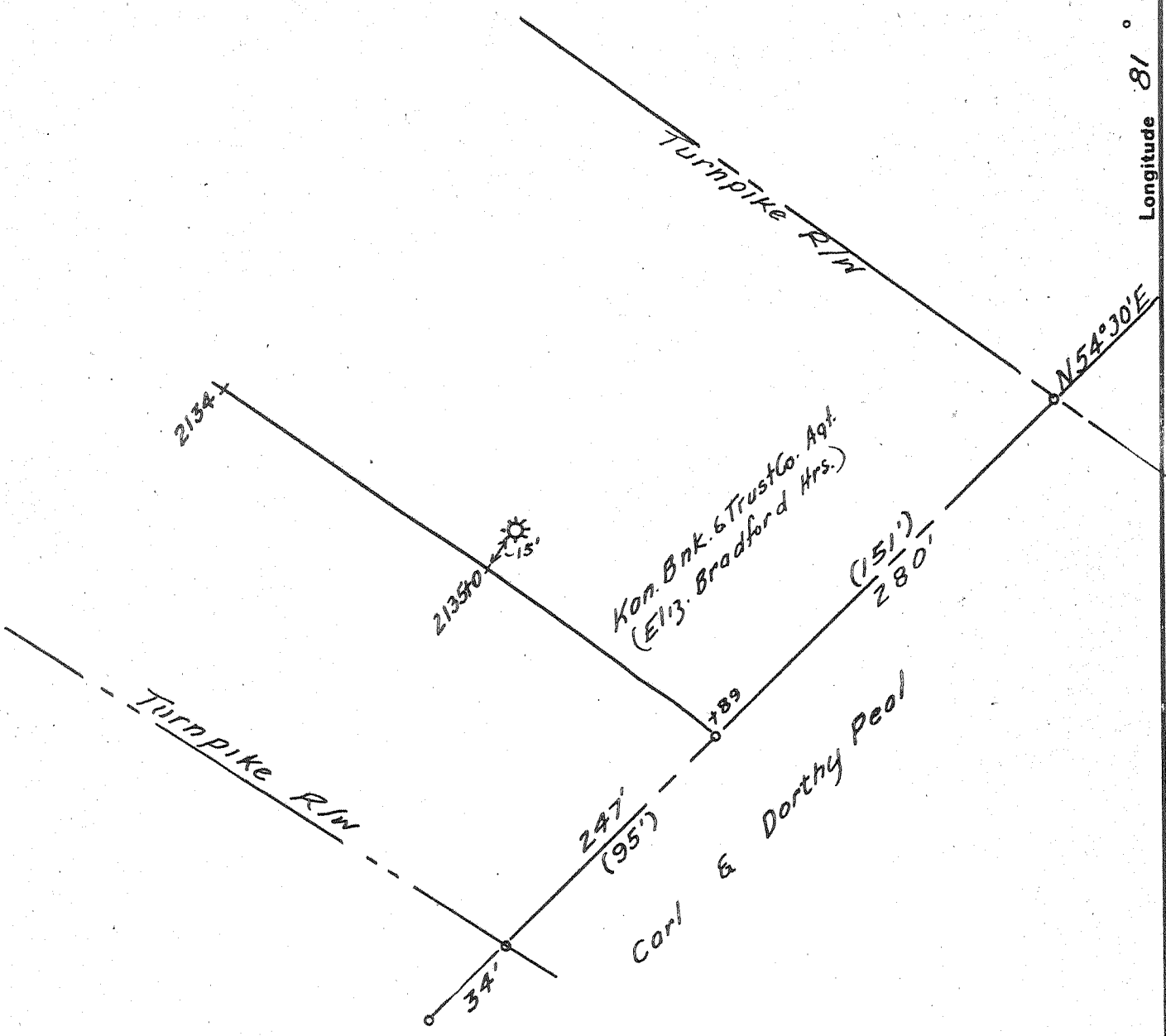


Latitude 38° 15'

Longitude 81° 30'

3.06 W  
+ 1.025



New Location..   
 Drill Deeper.....   
 Abandonment.....

Company Cumberland Gas Corp.  
 Address 1200 Union Bldg. Chas. W. Va.  
 Farm Kon. Bnk. & Trust Co. Agt. (Eliz. Bradford Hrs.)  
 Tract \_\_\_\_\_ Acres 77.3 Lease No. Bp-15  
 Well (Farm) No. BR-19 Serial No. \_\_\_\_\_  
 Elevation (Spirit Level) 673  
 Quadrangle Peytona NE  
 County Kanawha District Louden  
 Engineer S. H. Hall  
 Engineer's Registration No. 2602  
 File No. \_\_\_\_\_ Drawing No. \_\_\_\_\_  
 Date 7-22-53 Scale 1"=50'

STATE OF WEST VIRGINIA  
 DEPARTMENT OF MINES  
 OIL AND GAS DIVISION  
 CHARLESTON

WELL LOCATION MAP  
 FILE NO. KAN-1009-A

+ Denotes location of well on United States Topographic Maps, scale 1 to 62,500, latitude and longitude lines being represented by border lines as shown.

- Denotes one inch spaces on border line of original tracing.