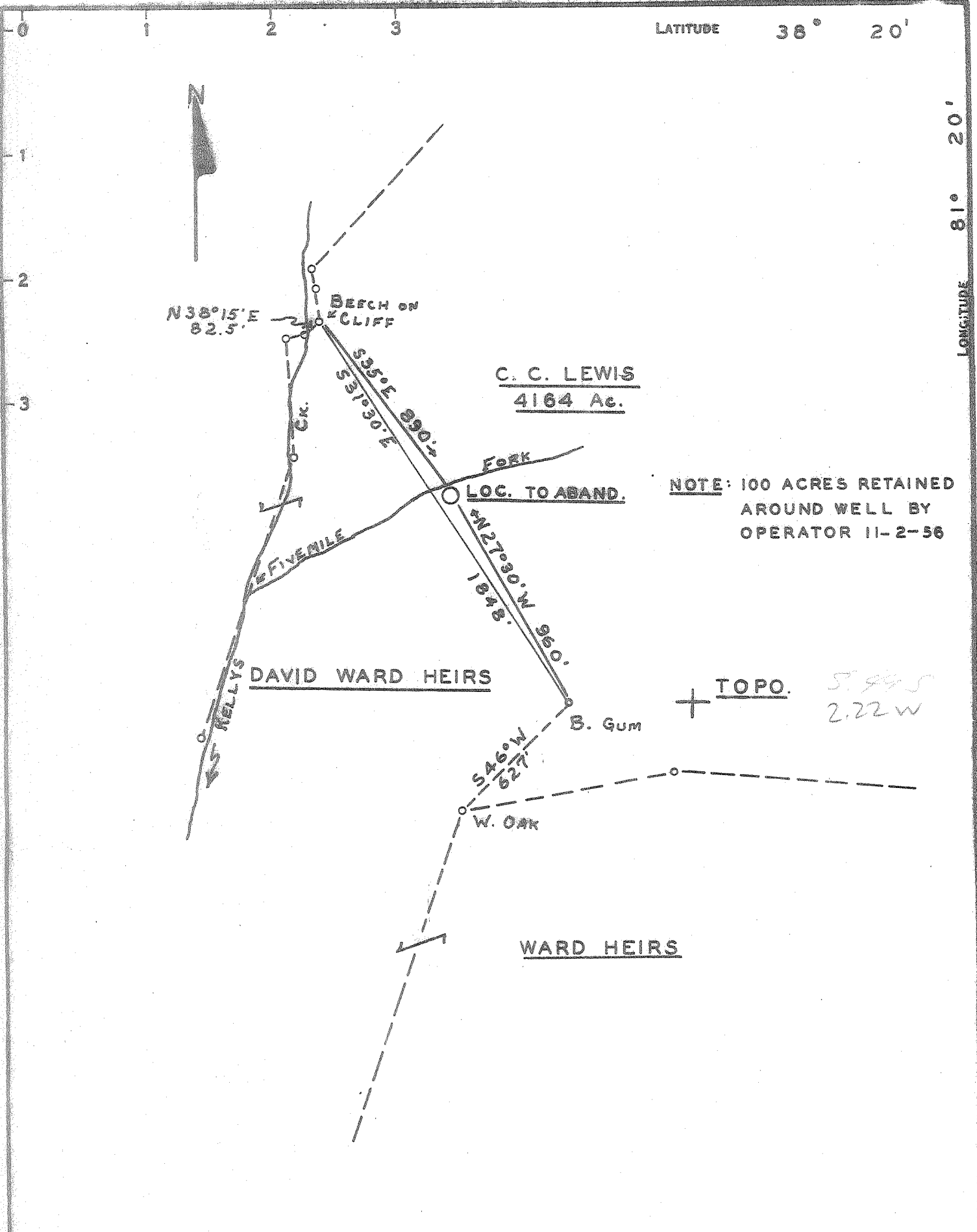


LATITUDE 38° 20'

LONGITUDE 81° 20'



**CERTIFICATE**

"I, the undersigned, hereby certify that this map is correct to the best of my knowledge and belief and shows all the information required by paragraph 6 of the rules and regulations of the oil and gas section of the mining laws of West Virginia."

Minimum degree of accuracy is one part in 200

Signed *Fred A. Radford*

- NEW LOCATION
- RECONDITION
- DRILL DEEPER
- ABANDONMENT

COMPANY	A. A. PURSLEY		
ADDRESS	LEROY, W. VA.		
FARM	C. C. LEWIS		
MAP	ACRES 100	LEASE NO.	
WELL (FARM) NO.		SERIAL NO.	1708 V. G. & O.
ELEVATION (SPIRIT LEVEL)	755'		
QUADRANGLE	CLENDEMIN SC		
COUNTY	KANAWHA	DISTRICT	CABIN CREEK
POINT OF PROVEN ELEVATION	B. M. APPROX. 2 1/2 MI. N 65° E OF LOC.		
FILE NO.		DRAWING NO.	
DATE	DEC. 1966	SCALE	1" = 500'

STATE OF WEST VIRGINIA  
 DEPARTMENT OF MINES  
 OIL AND GAS DIVISION  
 CHARLESTON  
 WELL LOCATION MAP

FILE NO. *100-23599*

+ DENOTES LOCATION OF WELL ON UNITED STATES TOPOGRAPHIC MAPS. SCALE 1 TO 62,500. LATITUDE AND LONGITUDE LINES BEING REPRESENTED BY BORDER LINES AS SHOWN.

- DENOTES ONE INCH SPACES ON BORDER LINE OF ORIGINAL TRACING.