

WW-7  
8-30-06



West Virginia Department of Environmental Protection  
Office of Oil and Gas  
**WELL LOCATION FORM: GPS**

API: 47-041-00041 WELL NO.: 607757

FARM NAME: EA Bennett

RESPONSIBLE PARTY NAME: Equitrans, L.P.

COUNTY: Lewis DISTRICT: Court House

QUADRANGLE: ~~Crawford N/W 1.1~~ ROANOKE

SURFACE OWNER: US Army Corp of Engineers

ROYALTY OWNER: US Bureau of Land Management

UTM GPS NORTHING: 4315863.104

UTM GPS EASTING: 545894.388 GPS ELEVATION: 374.5992m(1229')

The Responsible Party named above has chosen to submit GPS coordinates in lieu of preparing a new well location plat for a plugging permit or assigned API number on the above well. The Office of Oil and Gas will not accept GPS coordinates that do not meet the following requirements:

1. Datum: NAD 1983, Zone: 17 North, Coordinate Units: meters, Altitude: height above mean sea level (MSL) – meters.
2. Accuracy to Datum – 3.05 meters
3. Data Collection Method:

Survey grade GPS  : Post Processed Differential

Real-Time Differential

Mapping Grade GPS  : Post Processed Differential

Real-Time Differential

4. **Letter size copy of the topography map showing the well location.**

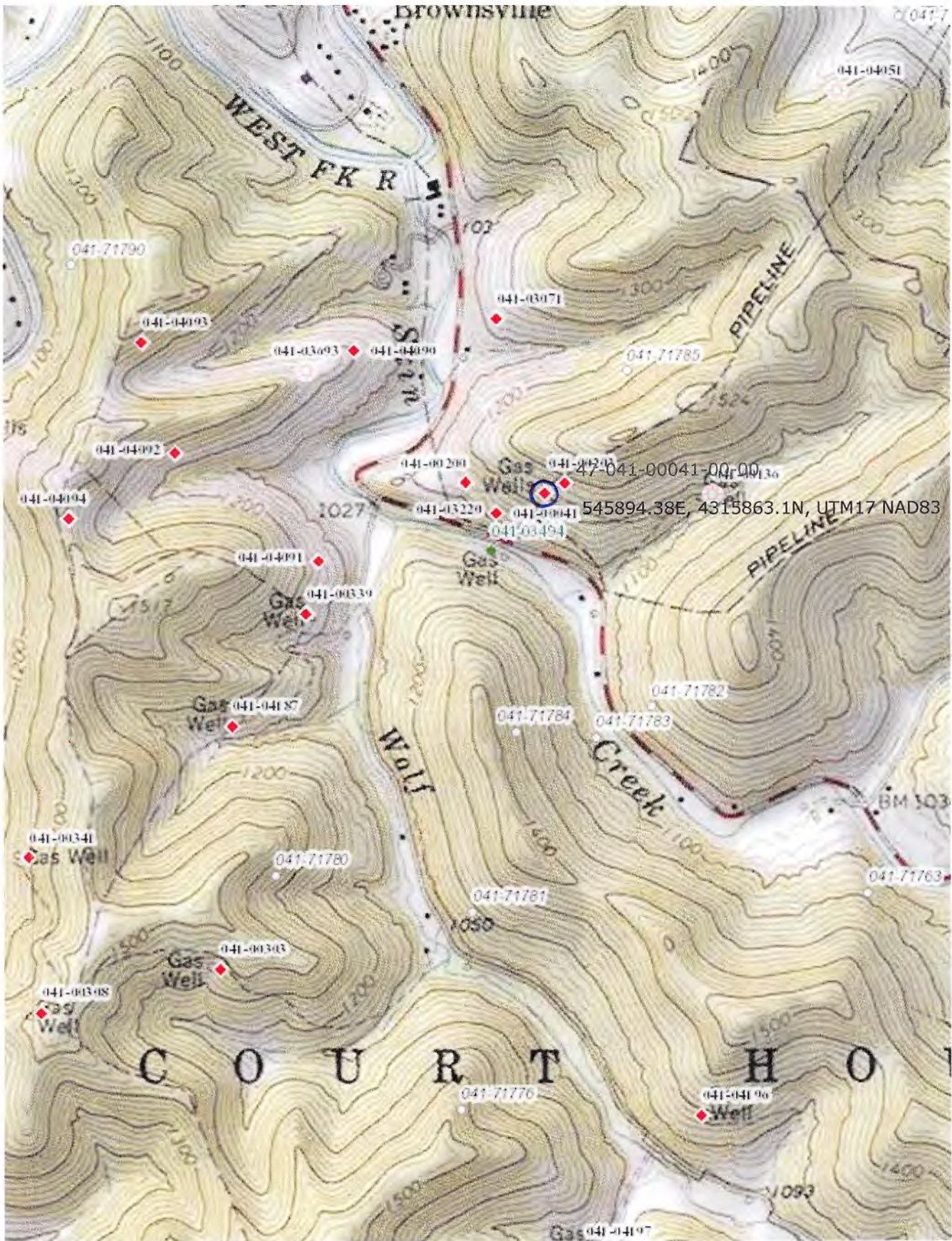
I the undersigned, hereby certify this data is correct to the best of my knowledge and belief and shows all the information required by law and the regulations issued and prescribed by the Office of Oil and Gas.

RECEIVED  
Office of Oil and Gas  
MAY 2 2019  
WV Department of  
Environmental Protection

K. J. Meyer  
Signature

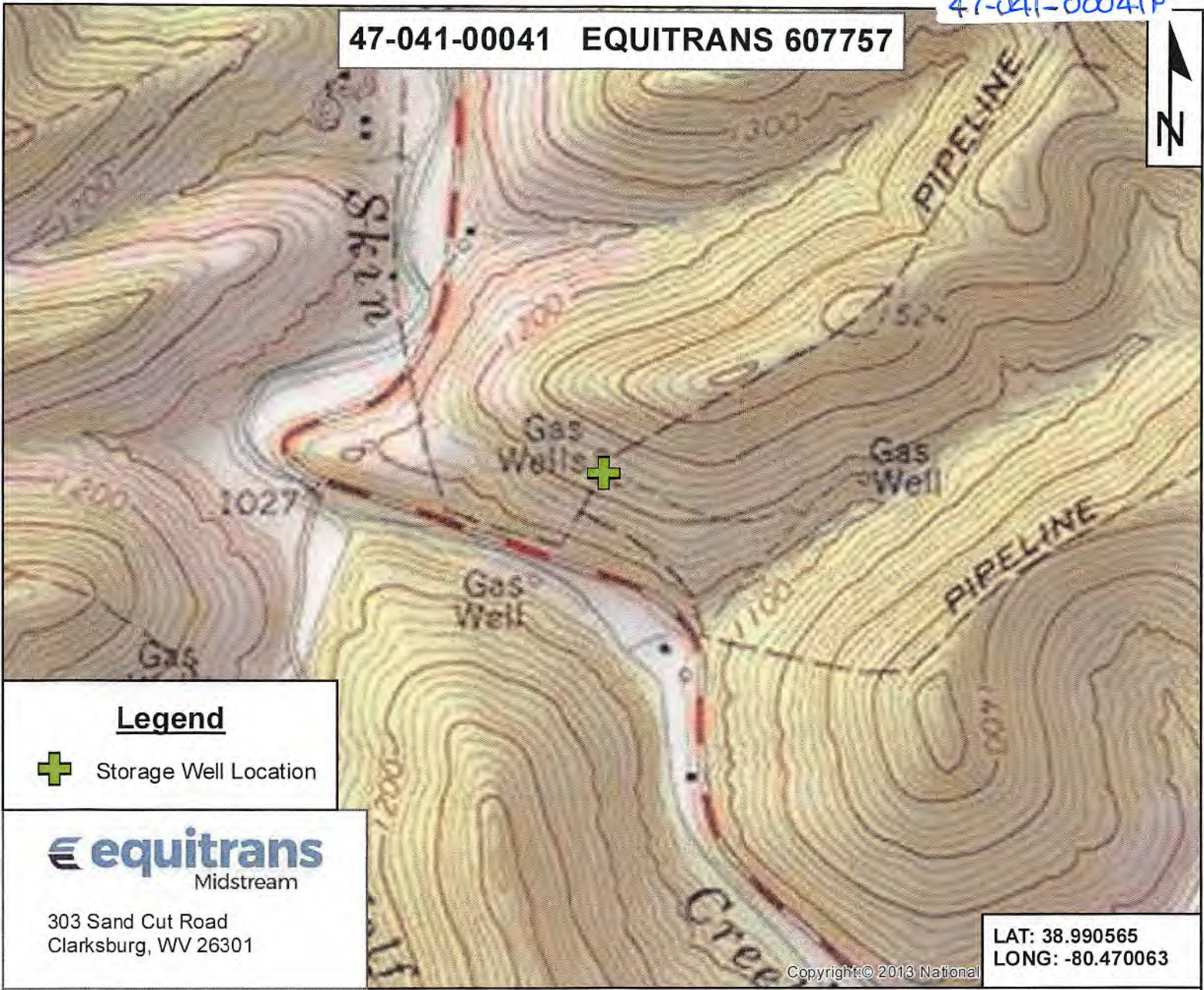
ATTORNEY IN FACT  
Title

4-16-2019  
Date




47-041-00041 P

47-041-00041 EQUITRANS 607757



**Legend**

 Storage Well Location



303 Sand Cut Road  
Clarksburg, WV 26301

LAT: 38.990565  
LONG: -80.470063

Copyright © 2013 National

DISCLAIMER:  
This map is confidential and is to be used only for the express informational purposes for which it was created. Unauthorized use, copying, or dissemination is strictly prohibited. Equitrans Midstream does not warrant the accuracy of the location of any items shown on this map, including, but not limited to, any structures, well or pipeline facilities, property boundaries, topography, roadways, or waterways. The items shown on the map may not have been placed on the map using survey lines or GPS coordinates. The specific location of any of the map items should be determined by a field survey performed by a licensed surveyor upon consultation with Equitrans Midstream.

Quad: ROANOKE  
~~Crawford N.W. 1~~

County: Lewis

District: Court House

Scale: Not Mapped to Scale

Date: 3/25/2019

API: 47-041-00041

RECEIVED  
Office of Oil and Gas

MAY 2 2019

WV Department of  
Environmental Protection