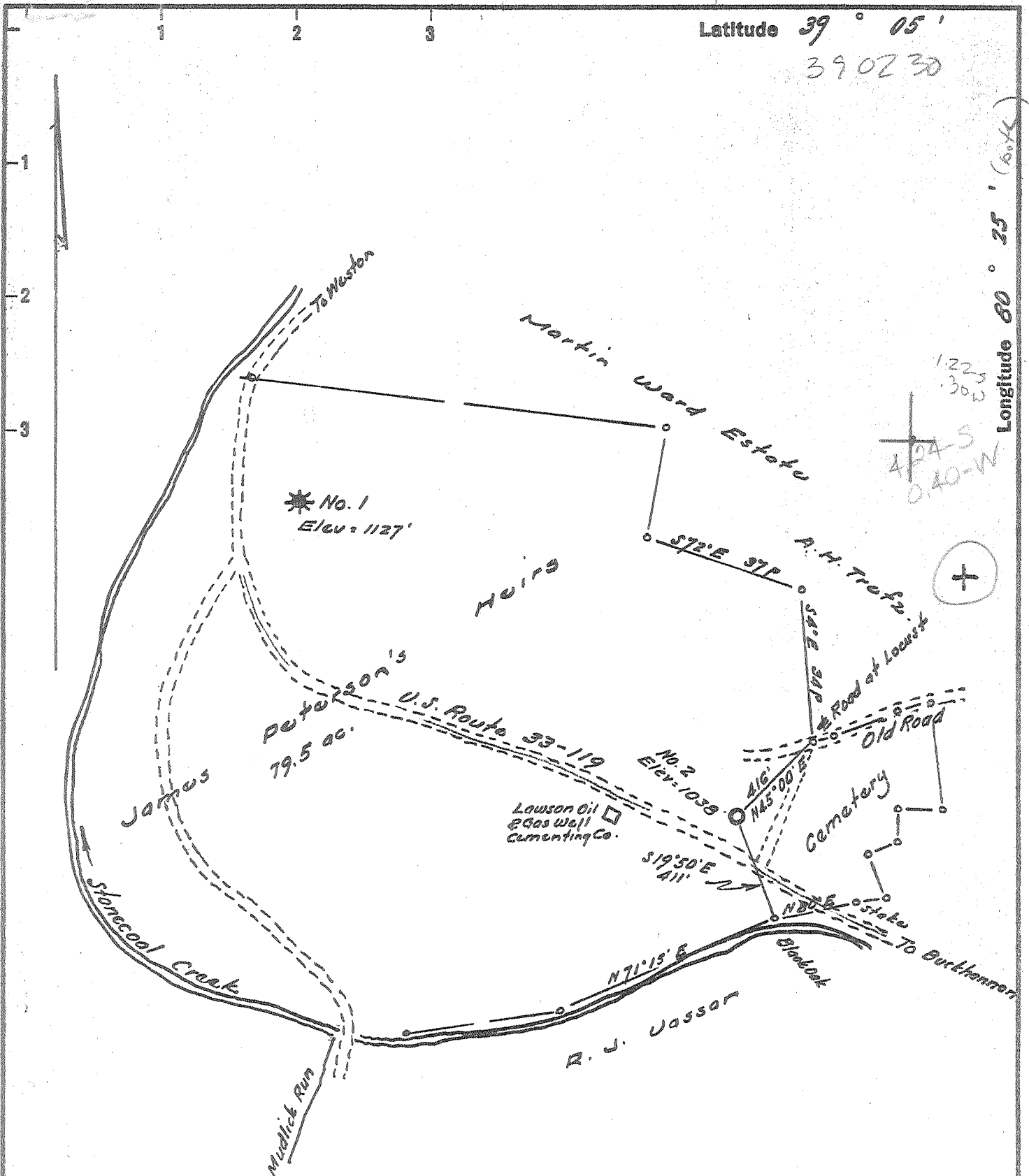


Latitude  $39^{\circ} 05'$   
 $390230$

Longitude  $80^{\circ} 25'$  (Box)



1225  
30W  
424-S  
0.40-W

I, the undersigned, hereby certify that this map is correct to the best of my knowledge and belief and shows all of the information required by paragraph 6 of the rules and regulations of the oil and gas section of the existing laws of West Virginia.

*W. H. H. J.*  
 R. P. No. 1227

New Location   
 Drill Deeper   
 Abandonment

*Issued*  
 3/8/71

Error in Closure: - Less than 1' in 200'

**BIG SAND DRILLING CO., INC.**  
 Company BEAR RUN OIL & GAS CO.  
 Address BOX 502 - JANE LEW, W. VA. 26378  
Shroeth, Big, Clarksburg, W. Va.  
 Farm James Peterson's Heirs  
 Tract \_\_\_\_\_ Acres 79.5 Lease No. \_\_\_\_\_  
 Well (Farm) No. Two Serial No. \_\_\_\_\_  
 Elevation (Spirit Level) 1038  
 Quadrangle Weston SW  
 County Lewis District Hackers Cr.  
 Engineer *W. H. H. J.*  
 Engineer's Registration No. 1227  
 File No. \_\_\_\_\_ Drawing No. \_\_\_\_\_  
 Date Nov. 4, 1963 Scale 1" = 300' = 495'

STATE OF WEST VIRGINIA  
 DEPARTMENT OF MINES  
 OIL AND GAS DIVISION  
 CHARLESTON

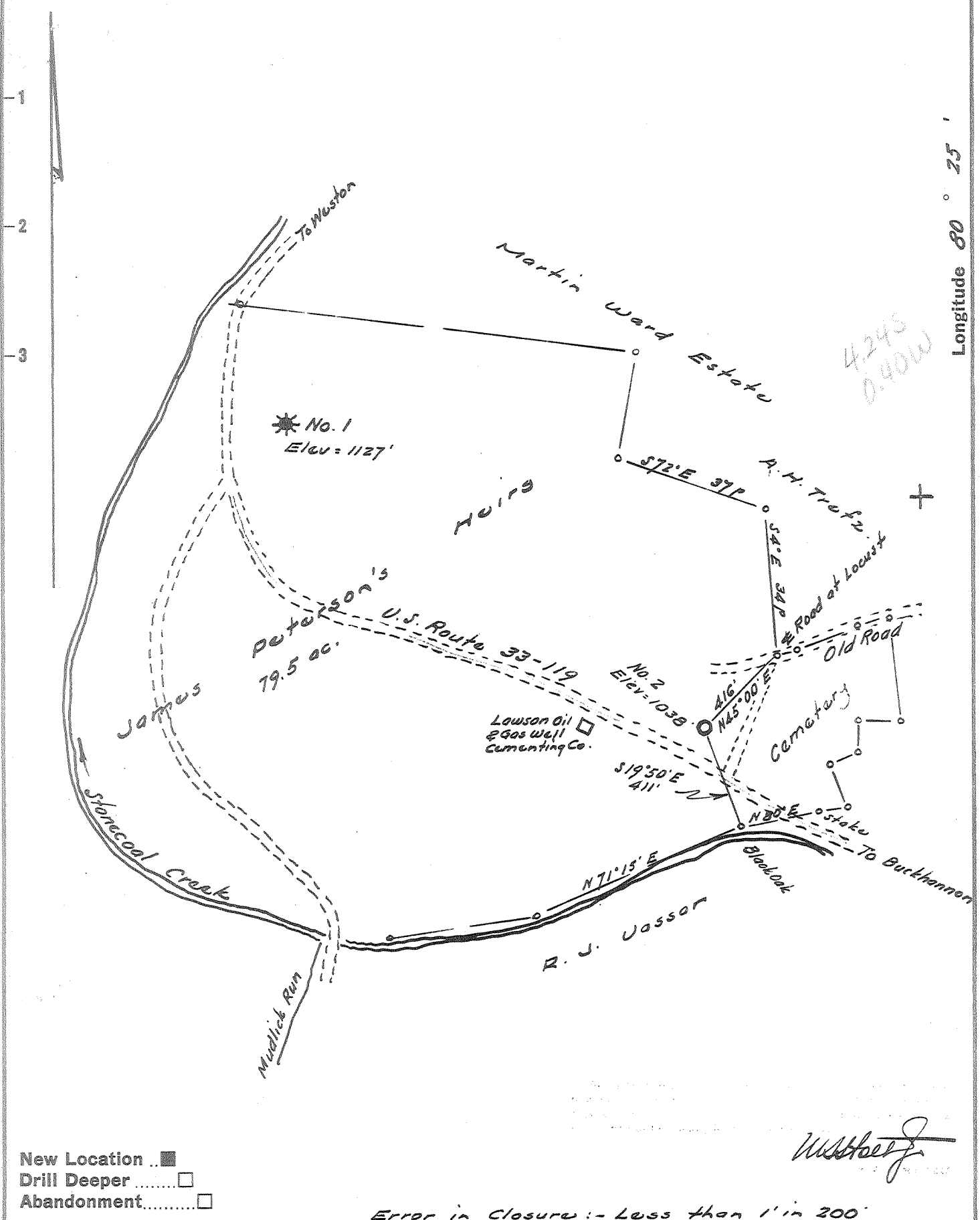
WELL LOCATION MAP  
 FILE NO. Law-1260-P

+ Denotes location of well on United States Topographic Maps, scale 1 to 62,500, latitude and longitude lines being represented by border lines as shown.

- Denotes one inch spaces on border line of original tracing.

Latitude 39° 05'

Longitude 80° 25'



- New Location
- Drill Deeper
- Abandonment

Error in Closure: - Less than 1" in 200'

Company BEAR RUN OIL & GAS CO.  
 Address Shroath Bldg., Clarksburg, W. Va.  
 Farm James Peterson's Heirs  
 Tract \_\_\_\_\_ Acres 79.5 Lease No. \_\_\_\_\_  
 Well (Farm) No. Two Serial No. \_\_\_\_\_  
 Elevation (Spirit Level) 1038  
 Quadrangle Weston - SW  
 County Lewis District Hackers Cr.  
 Engineer W. H. ...  
 Engineer's Registration No. 1227  
 File No. \_\_\_\_\_ Drawing No. \_\_\_\_\_  
 Date Nov. 4, 1963 Scale 1" = 300' = 495'

STATE OF WEST VIRGINIA  
 DEPARTMENT OF MINES  
 OIL AND GAS DIVISION  
 CHARLESTON

**WELL LOCATION MAP**  
 FILE NO. Low-1260

+ Denotes location of well on United States Topographic Maps, scale 1 to 62,500, latitude and longitude lines being represented by border lines as shown.

- Denotes one inch spaces on border line of original tracing.

66-153



STATE OF WEST VIRGINIA  
DEPARTMENT OF MINES  
OIL AND GAS DIVISION

Rotary   
Spudder   
Cable Tools   
Storage

Quadrangle Weston

Permit No. LEW-1260

**WELL RECORD**

Oil or Gas Well Oil & Gas  
(KIND)

Company Bear Run Oil & Gas Company  
Address Schroath Bldg., Clarksburg, W. Va. 26301.  
Farm C. E. Peterson Heirs Acres \_\_\_\_\_

Location (waters) \_\_\_\_\_  
Well No. TWO Elev. 1038  
District Hackers Creek County Lewis

The surface of tract is owned in fee by C. E. Peterson  
Address Clarksburg, W. Va.

Mineral rights are owned by C. E. Peterson  
Address Clarksburg, W. Va.

Drilling commenced December 2, 1963  
Drilling completed January 19, 1964

Date Shot \_\_\_\_\_ From \_\_\_\_\_ To \_\_\_\_\_  
With \_\_\_\_\_

Open Flow 12 /10ths Water in 2 Inch  
/10ths Merc. in \_\_\_\_\_ Inch

Volume 160 M Cu. Ft.

Rock Pressure 495 lbs. 24 hrs.

Oil Show bbls., 1st 24 hrs.

WELL ACIDIZED \_\_\_\_\_

WELL FRACTURED \_\_\_\_\_

Casing and Tubing	Used in Drilling	Left in Well	Packers
Size			
16	30'	30'	Kind of Packer _____
13			
10	342		Size of _____
8 3/4	866		
6 3/4	1604		Depth set _____
5 3/16			
X 4 1/2	2503	2503	Perf. top _____
2			Perf. bottom _____
Liners Used			Perf. top _____
			Perf. bottom _____

CASING CEMENTED 4 1/2 SIZE 2503 No. Ft. 5/8/64 Date  
100 sacks cement; 5 sacks gel *-Lawson Co. cementing Co.*

COAL WAS ENCOUNTERED AT \_\_\_\_\_ FEET \_\_\_\_\_ INCHES  
\_\_\_\_\_ FEET \_\_\_\_\_ INCHES  
\_\_\_\_\_ FEET \_\_\_\_\_ INCHES

30,000 lb. sand; 1,100 bbl water; 500 gal. acid

15 bbl oil per day, 350 MCF

500 lb. 24 hrs.

RESULT AFTER TREATMENT \_\_\_\_\_

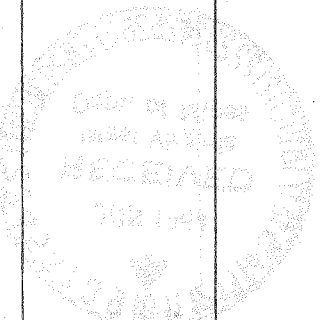
ROCK PRESSURE AFTER TREATMENT \_\_\_\_\_

Fresh Water \_\_\_\_\_ Feet Salt Water \_\_\_\_\_ Feet

Formation	Color	Hard or Soft	Top	Bottom	Oil, Gas or Water	Depth	Remarks
Clay			0	15			
Sand			15	25			
Slate			25	55			
Rock	Red		55	75			
Slate & Shells			75	175	Water	95	
Rock	Red		175	220	Water	165	
Slate & Shells			220	320	Water	265	9 bb.
Rock	Red		320	340			
Slate			340	350			
Lime		Gritty	350	365			
Slate & Shells			365	480			
Sand		Mean	480	525			
Slate			525	528			
Sand			528	556			
Slate & Shells			556	648			
Sand			648	662			
Slate			662	678			
Lime			678	698			
Slate & Shells			698	735			
Sand		Hard	735	795	Water	760-770	
Slate & Shells			795	832			
Sand			832	948			
Slate			948	950			
Lime			950	970			
Slate & Shells			970	1030			
Lime		Gritty	1030	1055			



Formation	Color	Hard or Soft	Top 6	Bottom	Oil, Gas or Water	Depth Found	Remarks
Sand			1055	1080			
Lime			1080	1105			
Slate			1105	1115			
Sand			1115	1190			
Slate & Shells			1190	1215			
Sand			1215	1252			
Slate			1252	1268			
Sand			1268	1280			
Rock	Red		1280	1285			
Lime			1285	1303			
Slate & Shells			1303	1325			
Rock	Red		1325	1340			
Lime			1340	1375			
Rock	Red		1375	1430			
Slate			1430	1440			
Rock	Red		1440	1450			
Lime			1450	1472			
Rock	Red		1472	1480			
Sand			1480	1490			
Rock	Red		1490	1505			
Lime			1505	1512			
Slate			1512	1520			
Lime		Little	1520	1545			
Sand			1545	1555			
Slate			1555	1560			
Sand			1560	1580			
Lime		Big	1580	1623	Gas	1639-1646	Show
Sand		Injun	1623	1758	Oil	1668	Show
Slate			1758	1770	Oil	1747	Show
Lime		Broken	1770	1815			
Lime		Gritty	1815	1838	Oil	1817	Show
Slate & Shells			1838	1890			
Sand			1890	1920			
Slate & Shells			1920	1973			
Sand		Hard	1973	2009			
Slate & Shells			2009	2050			
Sand			2050	2066			
Slate & Shells			2066	2094			
Rock	Red		2094	2105			
Sand			2105	2125			
Rock	Red		2125	2150			
Lime		Broken	2150	2210			
Sand			2210	2235			
Slate & Shells			2235	2273	Gas	2273	12/10 water through 2"
Sand			2273	2300			
Slate & Shells			2300	2458	Gas	2278	
Sand			2458	2481	Gas	22420	
Slate			2481	2483			
Sand			2483	2490			
Slate			2490	2503			
			<b>TOTAL DEPTH</b>	<b>2503</b>			



Date May 27, 1964

APPROVED BEAR RUN OIL & GAS CO. Owner  
 By Thomas H. Lauli, Jr.  
 THOMAS H. LAULI, JR., PRESIDENT.