

4102400P

WW-7
8-30-06



West Virginia Department of Environmental Protection
Office of Oil and Gas
WELL LOCATION FORM: GPS

API: 47-041-02400 WELL NO.: WV 604230 (Sarah Harrison #4230)

FARM NAME: Sarah Harrison

RESPONSIBLE PARTY NAME: EQT Production Company

COUNTY: Lewis DISTRICT: Courthouse *2*

QUADRANGLE: Camden 7.5' *276*

SURFACE OWNER: John R. Bailey

ROYALTY OWNER: Donald R. Reynolds, et al.

UTM GPS NORTHING: 4317820

UTM GPS EASTING: 538682 GPS ELEVATION: 402 m (1321 ft)

The Responsible Party named above has chosen to submit GPS coordinates in lieu of preparing a new well location plat for a plugging permit or assigned API number on the above well. The Office of Oil and Gas will not accept GPS coordinates that do not meet the following requirements:

- Datum: NAD 1983, Zone: 17 North, Coordinate Units: meters, Altitude: height above mean sea level (MSL) – meters.
- Accuracy to Datum – 3.05 meters
- Data Collection Method:

Survey grade GPS : Post Processed Differential
Real-Time Differential

Mapping Grade GPS X: Post Processed Differential X
Real-Time Differential

Received
Office of Oil & Gas
JAN 12 2015

- Letter size copy of the topography map showing the well location.**

I the undersigned, hereby certify this data is correct to the best of my knowledge and belief and shows all the information required by law and the regulations issued and prescribed by the Office of Oil and Gas.

Steve O'Neil
Signature

PS # 2180
Title

12/18/14
Date

4102400P

Topo Quad: Camden 7.5'

Scale: 1" = 2000'

County: Lewis

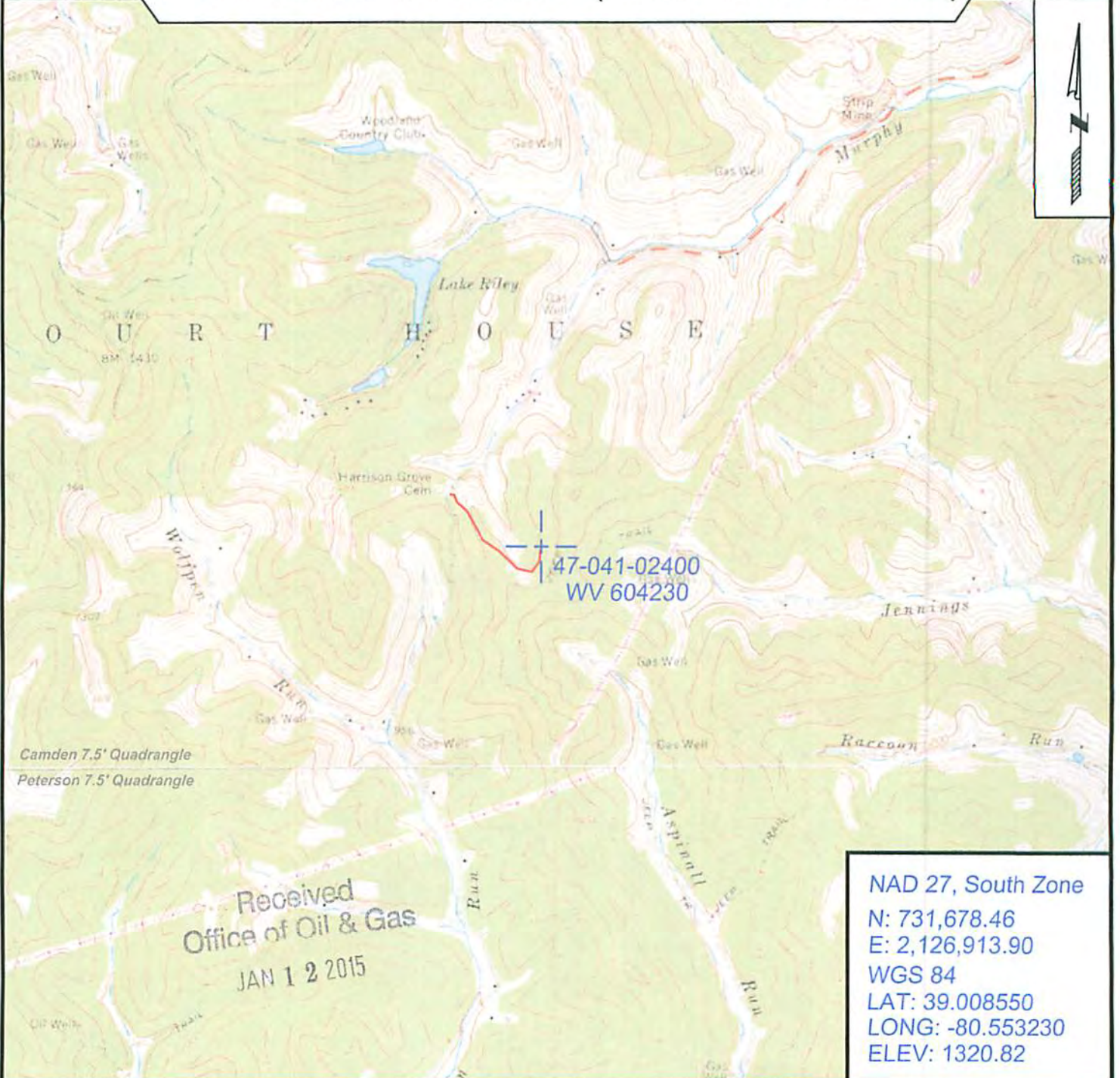
Date: October 02, 2014

District: Courthouse

Project No: 73-12-00-08

47-041-02400 WV 604230 (Sarah Harrison #4230)

Topo



Camden 7.5' Quadrangle
Peterson 7.5' Quadrangle

Received
Office of Oil & Gas
JAN 1 2 2015

NAD 27, South Zone
N: 731,678.46
E: 2,126,913.90
WGS 84
LAT: 39.008550
LONG: -80.553230
ELEV: 1320.82



SURVEYING AND MAPPING SERVICES PERFORMED BY:

ALLEGHENY SURVEYS, INC.

1-800-482-8606
237 Birch River Road
Birch River, WV 26610
PH: (304) 649-8606
FAX: (304) 649-8608

PREPARED FOR:

EQT Production Company

P.O. Box 280
Bridgeport, WV 26330