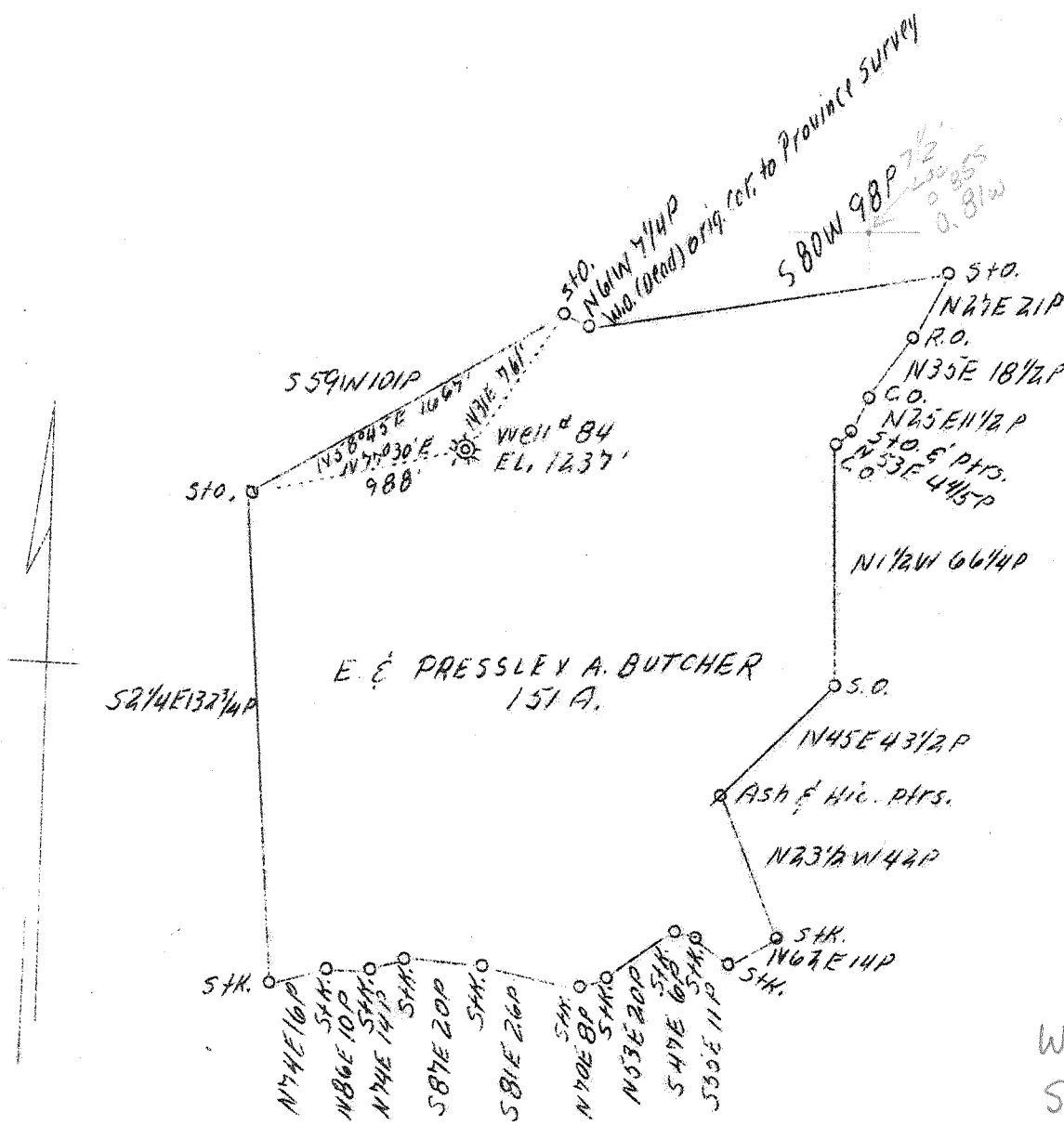


LATITUDE 39° 05'

LONGITUDE 80° 25'

1785  
76.4

W - .79  
S - .78



COAL OWNED by Pressley A. Butcher

M.B.D.

Company	Cumberland & Allegheny Gas Co.	STATE OF WEST VIRGINIA	
Address	800 Union Trust Bldg., Pittsburgh, Pa.	Department of Mines	
Farm	Pressley A. Butcher	OIL & GAS DIVISION	
Acres	151	Charleston	
Lease No.	272	WELL LOCATION MAP	
Well (Farm) No.	1	File No.	<u>LEW-178-A</u>
Serial No.	84	x Denotes location of well on U. S. Topographic Maps, scale 1 to 62,500, latitude and longitude lines being represented by border lines as shown.	
Elevation (SL)	1237	- Denotes one inch spaces on border line of original tracing.	
Quadrangle	Weston S. W. <sup>7/2</sup>		
County	Lewis		
District	Hackers Creek		
Engineer	J. C. Mercer		
Eng. Reg. No.	-		
Drawing No.	Y-8-441		
Date	August 17, 1939		
Scale	1" - 800'		