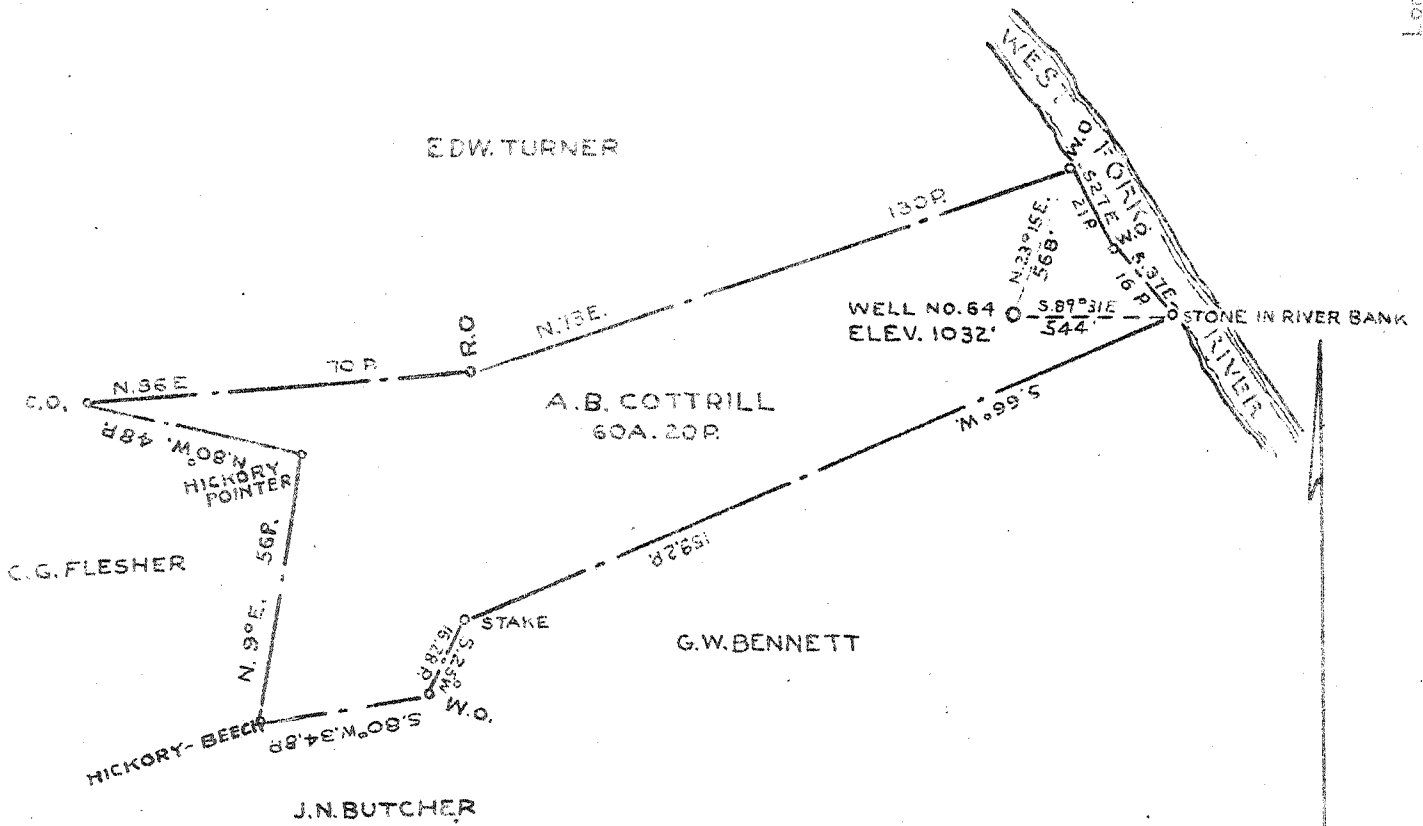


175 S  
2.45 W



COAL OWNED BY CLINTON COTTRILL, DEANVILLE W.VA.  
JESSIE COTTRILL AND BLAIR COTTRILL - R.D.5 - WESTON W.VA.

2.50 W.  
0.77 S.

- New Location...
- Drill Deeper.....
- Abandonment.....

Company CUMBERLAND AND ALLEGHENY GAS CO.  
 Address 800 UNION TRUST BLD'G, PITTSBURGH PA.  
 Farm A.B. COTTRILL  
 Tract Acres 60A. 20P Lease No. 257  
 Well (Farm) No. 1 Serial No. 64  
 Elevation (Spirit Level) 1032'  
 Quadrangle WESTON S.W. 1/4  
 County LEWIS District FREEMANS CREEK  
 Engineer *J. L. ...*  
 Engineer's Registration No. \_\_\_\_\_  
 File No. \_\_\_\_\_ Drawing No. Y-B-690  
 Date MAY, 20-1940 Scale 1" = 660'-OR 40P

STATE OF WEST VIRGINIA  
 DEPARTMENT OF MINES  
 OIL AND GAS DIVISION  
 CHARLESTON

WELL LOCATION MAP  
 File No. LEW-194A

+ Denotes location of well on United States Topographic Maps, scale 1 to 62,500, latitude and longitude lines being represented by border lines as shown.  
 — Denotes one inch spaces on border line of original tracing.

STATE OF WEST VIRGINIA  
DEPARTMENT OF MINES  
OIL AND GAS DIVISION

283

WELL RECORD

Permit No. Drilled in 1912

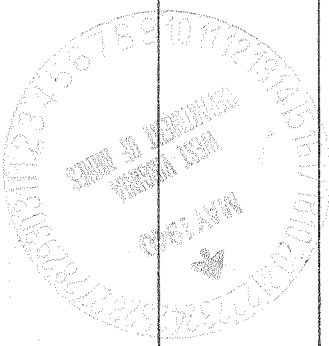
Oil or Gas Well Gas  
(Kind)

Company Cumberland and Allegheny Gas Co.  
Address 800 Union Trust Bldg., Pittsburgh, Pa.  
Farm A. B. Cottrill Acres 70  
Location (waters) \_\_\_\_\_  
Well No. 2 - 64 Elev. 1032'  
District Freemans Creek County Lewis  
The surface of tract is owned in fee by Blair Cottrill  
Address Weston, W. Va.  
Mineral rights are owned by Cumberland and Allegheny Gas Company  
Address Pittsburgh, Pa.  
Drilling commenced May 13, 1912  
Drilling completed June 22, 1912  
Date shot No Depth of shot \_\_\_\_\_  
Open Flow /10ths Water in \_\_\_\_\_ Inch  
/10ths Merc. in \_\_\_\_\_ Inch  
Volume \_\_\_\_\_ Cu. Ft.  
Rock Pressure \_\_\_\_\_ lbs. \_\_\_\_\_ hrs.  
Oil \_\_\_\_\_ bbls., 1st 24 hrs.  
Fresh water \_\_\_\_\_ feet \_\_\_\_\_ feet  
Salt water \_\_\_\_\_ feet \_\_\_\_\_ feet

Casing and Tubing	Used in Drilling	Left in Well	Packers
Size			
16			Kind of Packer
13			
10	174	174	Size of
8 1/4	767	667	
6 5/8	1317	1317	Depth set
5 3/16			
3			Perf. top
2			Perf. bottom
Liners Used			Perf. top
			Perf. bottom

CASING CEMENTED \_\_\_\_\_ SIZE \_\_\_\_\_ No. FT. \_\_\_\_\_ Date \_\_\_\_\_  
COAL WAS ENCOUNTERED AT \_\_\_\_\_ FEET \_\_\_\_\_ INCHES  
\_\_\_\_\_ FEET \_\_\_\_\_ INCHES \_\_\_\_\_ FEET \_\_\_\_\_ INCHES  
\_\_\_\_\_ FEET \_\_\_\_\_ INCHES \_\_\_\_\_ FEET \_\_\_\_\_ INCHES

Formation	Color	Hard or Soft	Top	Bottom	Oil Gas or Water	Depth Found	Remarks
Little Dunkard			140	180			
Big Dunkard			300	315			
Gas Sand			318	378			
First Salt Sand			457	567			
Second Salt Sand			618	663			
3rd Salt Sand			795	840			
Maxon Sand			1130	1230			
Little Lime			1250	1265			
Big Lime			1265	1295			
Big Injun			1295	1419	Show of gas	1310	
Berea			1600	1625			
Gantz			1660	1700	Gas	1660-1670	
Gordon Stray			1800	1832			
Gordon			1900	1965			
4th Sand			1965	2060			
5th Sand			2060	2080	Gas	2062-2075	
Total depth				2112			



Formation	Color	Hard or Soft	Top	Bottom	C or W.S.	Depth Found	Remarks

Date..... May 21st. ....., 1940

APPROVED.....CUMBERLAND AND ALLEGHENY GAS CO., Owner

By.....Harry H. Fowler  
Land Dept. (Title) Office Manager