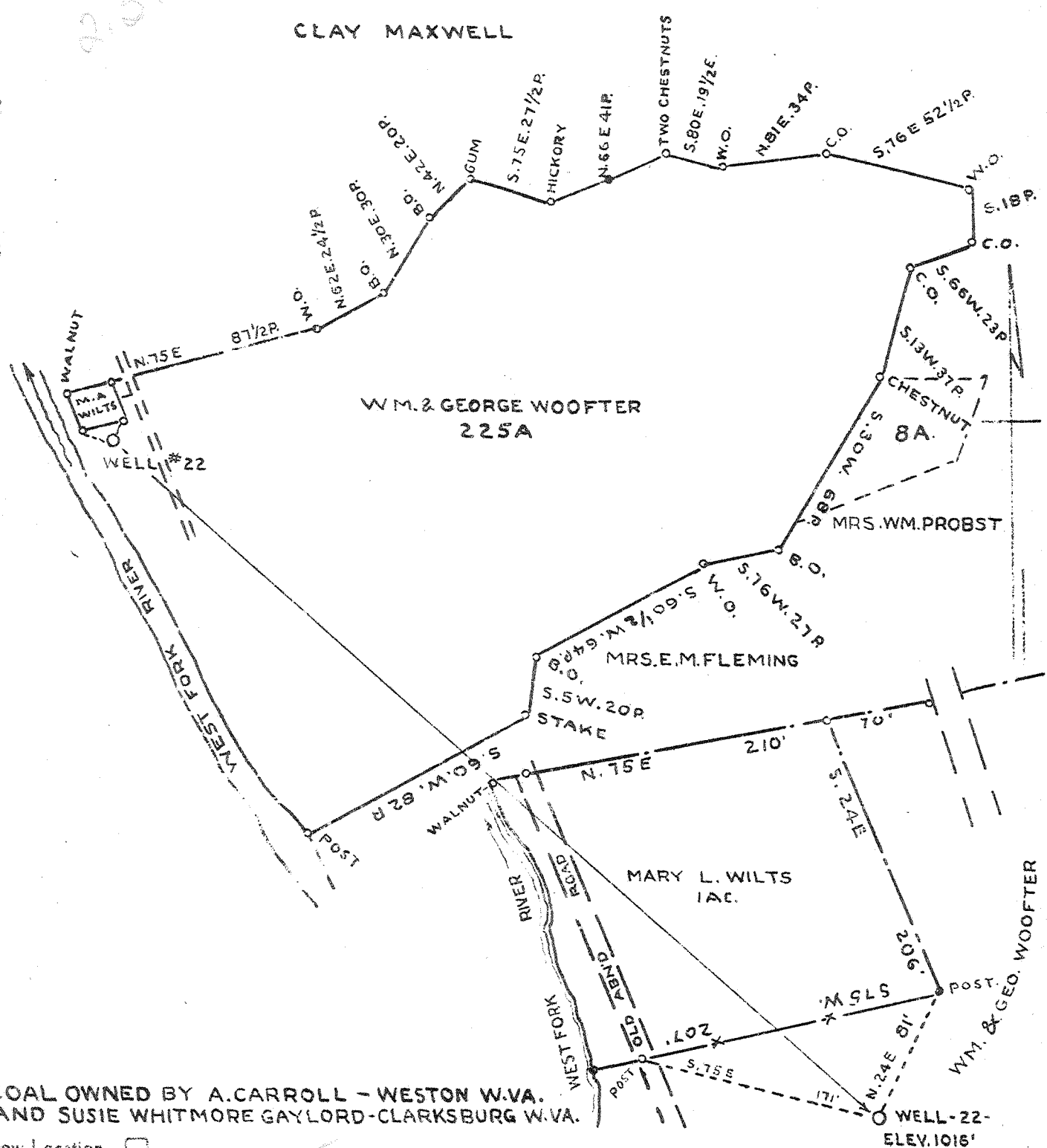


162  
2.37W



COAL OWNED BY A. CARROLL - WESTON W.VA.  
AND SUSIE WHITMORE GAYLORD - CLARKSBURG W.VA.

- New Location...
- Drill Deeper...
- Abandonment...

LOCATION-SCALE 1"=100'

2.4  
0.6

Company CUMBERLAND & ALLEGHENY GAS CO  
 Address 800 UNION TRUST BLD'G PITTSBURGH PA  
 Farm WM. & GEO. WOOFER  
 Tract Acres 225A Lease No 202  
 Well (Farm) No. 1 Serial No. -22  
 Elevation (Spirit Level) 1016'  
 Quadrangle WESTON  
 County LEWIS District HACKERS CREEK  
 Engineer *A. E. Mercer*  
 Engineer's Registration No.  
 File No. Drawing No. Y-10-144  
 Date JUNE-2-1941 Scale 1"=800'

STATE OF WEST VIRGINIA  
 DEPARTMENT OF MINES  
 OIL AND GAS DIVISION  
 CHARLESTON

WELL LOCATION MAP  
 File No. LEW-212A

+ Denotes location of well on United States Topographic Maps, scale 1 to 62,500, latitude and longitude lines being represented by border lines as shown.  
 - Denotes one inch spaces on border line of original tracing



STATE OF WEST VIRGINIA  
DEPARTMENT OF MINES  
OIL AND GAS DIVISION

536

Permit No. 212-A (Renewal)

WELL RECORD

Oil or Gas Well Gas  
(KIND)

Company Cumberland & Allegheny Gas Co.  
Address Pittsburgh, Pa.  
Farm Geo. Woofter Acres 233  
Location (waters) \_\_\_\_\_  
Well No. 1-22 Elev. 1016'  
District Hocking Creek County Lewis  
The surface of tract is owned in fee by \_\_\_\_\_  
Address \_\_\_\_\_  
Mineral rights are owned by \_\_\_\_\_  
Address \_\_\_\_\_  
Drilling commenced 3-7-08  
Drilling completed 4-6-08  
Date Shot \_\_\_\_\_ From \_\_\_\_\_ To \_\_\_\_\_  
With \_\_\_\_\_  
Open Flow \_\_\_\_\_ /10ths Water in \_\_\_\_\_ Inch  
\_\_\_\_\_ /10ths Merc. in \_\_\_\_\_ Inch  
Volume \_\_\_\_\_ Cu. Ft.  
Rock Pressure \_\_\_\_\_ lbs. \_\_\_\_\_ hrs.  
Oil \_\_\_\_\_ bbls., 1st 24 hrs.  
Fresh water \_\_\_\_\_ feet \_\_\_\_\_ feet  
Salt water \_\_\_\_\_ feet \_\_\_\_\_ feet

Casing and Tubing	Used in Drilling	Left in Well	Packers
Size			Kind of Packer
16			
18	24	24	
10	182	182	Size of
8 1/4	683	683	
6 3/4	1240	1240	Depth set
5 3/16			
3			Perf. top
2			Perf. bottom
Liners Used			Perf. top
			Perf. bottom

CASING CEMENTED \_\_\_\_\_ SIZE \_\_\_\_\_ No. Ft. \_\_\_\_\_ Date \_\_\_\_\_  
COAL WAS ENCOUNTERED AT 378 FEET 48 INCHES  
\_\_\_\_\_ FEET \_\_\_\_\_ INCHES \_\_\_\_\_ FEET \_\_\_\_\_ INCHES  
\_\_\_\_\_ FEET \_\_\_\_\_ INCHES \_\_\_\_\_ FEET \_\_\_\_\_ INCHES

Formation	Color	Hard or Soft	Top	Bottom	Oil, Gas or Water	Depth Found	Remarks
Water				24			
Sand			160	200			
Sand			318	376			
Water in coal			378	382			
Sand			400	412			
Sand			520	530			
Sand			580	590			
Water				738			
Sand			875	898			
Maxton sand			1102	1200			
Big lime			1200	1252			
Big Injun			1252	1362			
Show of gas					1284		
Gantz sand			1635	1670			
Sand			1770	1890			
Gordon sand			1893	1927			
Show of gas					1902		
Fifth sand			2044	2060			
Gas					2050		
Total depth				2070			

Plugged to 1315' in 1941