

Latitude

Longitude

1.50s  
.80w

Topo Location

7.5' Loc. \_\_\_\_\_ 15' Loc. \_\_\_\_\_  
(calc.) \_\_\_\_\_

Company \_\_\_\_\_

Farm \_\_\_\_\_

15' Quad \_\_\_\_\_  
(sec.)

7.5' Quad Camden

District Court House

WELL LOCATION PLAT

County 041 Permit 30829

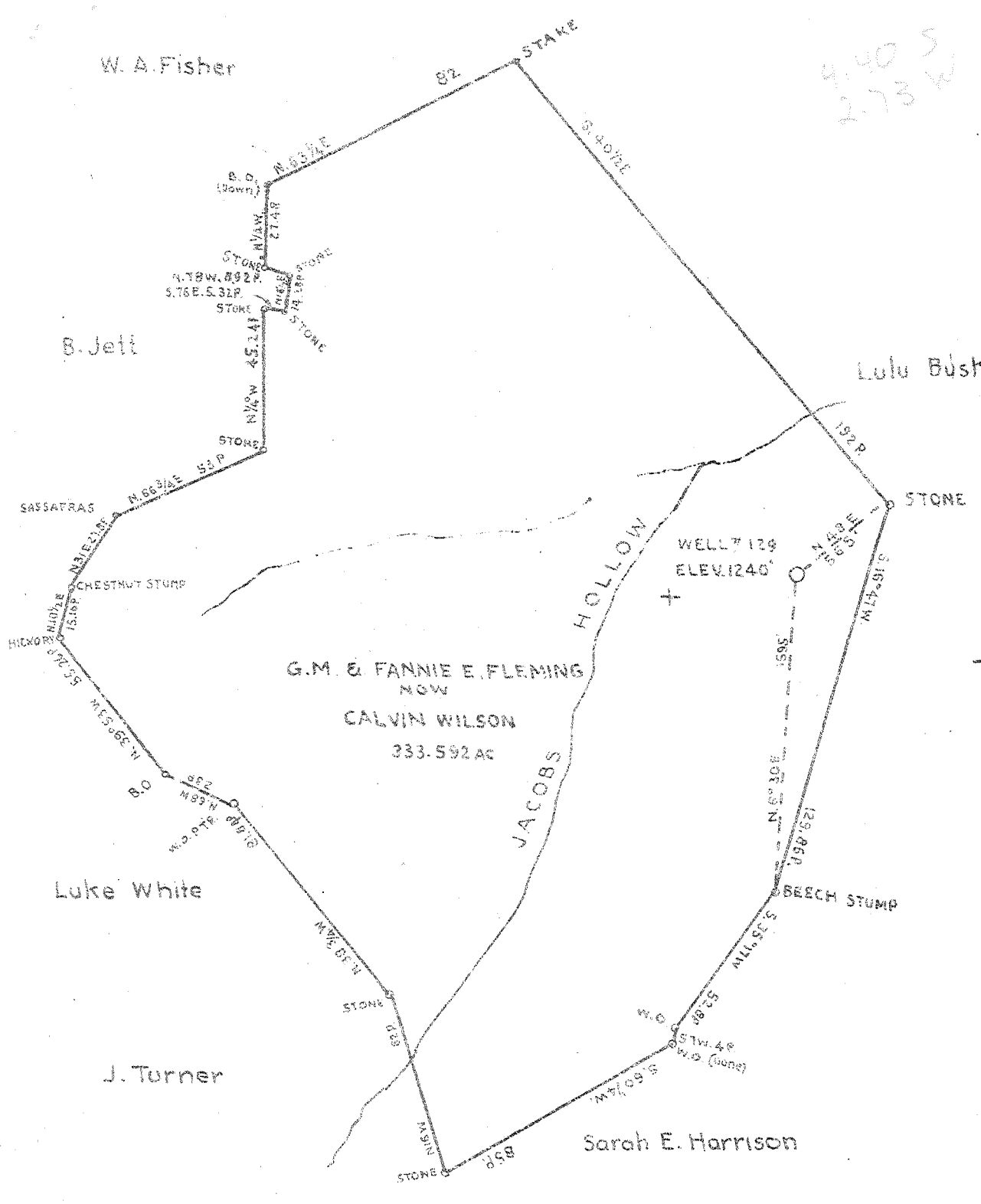
W. A. Fisher

4.40 S  
2.73 W

30  
80

B. Jeff

Lulu Bush



LOCAL OWNED BY Louise Catherine Hornor et al. Clarksburg W.Va.

- NEW LOCATION
- DRILL DEEPER
- ABANDONMENT

COMPANY: Cumberland and Allegheny Gas Company  
 ADDRESS: 800 Union Trust Bld'g Pittsburgh Pa.  
 NAME: G.M. and Fannie E. Fleming  
 ACRES: 333.592 LEASE NO: 253  
 WELL NAME NO: 4 SERIAL NO: A-129  
 ELEVATION (SPIRE LEVEL): 1240'  
 DIA. VERTICAL: 4 inches  
 COUNTY: Lewis DISTRICT: Court House  
 SURVEYOR: *J. Mercer*  
 DRAWING NO: Y-11-253  
 DATE: MAY 24 1946 SCALE: 1" = 800'

STATE OF WEST VIRGINIA  
 DEPARTMENT OF MINES  
 OIL AND GAS DIVISION  
 CHARLESTON

WELL LOCATION MAP  
 FILE NO. LEW-329-A

○ DENOTES LOCATION OF WELL ON UNITED STATES TOPOG-  
 RAPHERIC MAPS SCALE 1 TO 62,500. LATITUDE AND LONGITUDE  
 LINES BEING REPRESENTED BY BORDER LINES AS SHOWN  
 ○ DENOTES ONE INCH SPACED OR BORDER LINE OF SURVEY  
 TRAILING



STATE OF WEST VIRGINIA  
DEPARTMENT OF MINES  
OIL AND GAS DIVISION

415

WELL RECORD

Permit No. Drilled in 1915

Oil or Gas Well Gas  
(KIND)

Company CUMBERLAND AND ALLEGHENY GAS COMPANY  
Address 800 Union Trust Bldg., Pittsburgh, Pa.  
Farm G.M. & Fannie Fleming Acres 375  
Location (waters) \_\_\_\_\_  
Well No. L-129 Elev. 1240 ft.  
District Court House County Lewis  
The surface of tract is owned in fee by Fannie E. Fleming  
Matthew Edmiston Address Buckhannon, W.Va.  
Mineral rights are owned by Cumberland and Allegheny  
Gas Company Address Pittsburgh, Pa.

Drilling commenced 10/30/15  
Drilling completed 1/17/16  
Date Shot \_\_\_\_\_ From \_\_\_\_\_ To \_\_\_\_\_  
With \_\_\_\_\_

Open Flow \_\_\_\_\_ /10ths Water in \_\_\_\_\_ Inch  
\_\_\_\_\_ /10ths Merc. in \_\_\_\_\_ Inch  
Volume \_\_\_\_\_ Cu. Ft.  
Rock Pressure \_\_\_\_\_ lbs. \_\_\_\_\_ hrs.  
Oil \_\_\_\_\_ bbls., 1st 24 hrs.  
Fresh water \_\_\_\_\_ feet \_\_\_\_\_ feet  
Salt water \_\_\_\_\_ feet \_\_\_\_\_ feet

Casing and Tubing	Used in Drilling	Left in Well	Packers
Size			
16			Kind of Packer
13			
10	145'	145'	Size of
8 3/4	828'	-	
6 3/4	1846'	1846'	Depth set
5 3/16			
3			Perf. top
2			Perf. bottom
Liners Used			Perf. top
			Perf. bottom

CASING CEMENTED \_\_\_\_\_ SIZE \_\_\_\_\_ No. Ft. \_\_\_\_\_ Date \_\_\_\_\_

COAL WAS ENCOUNTERED AT 0 FEET \_\_\_\_\_ INCHES  
\_\_\_\_\_ FEET \_\_\_\_\_ INCHES \_\_\_\_\_ FEET \_\_\_\_\_ INCHES  
\_\_\_\_\_ FEET \_\_\_\_\_ INCHES \_\_\_\_\_ FEET \_\_\_\_\_ INCHES

Formation	Color	Hard or Soft	Top	Bottom	Oil, Gas or Water	Depth Found	Remarks
Slate & Red Rock			0	540	No Little Dunkard Sand		
Big Dunkard			540	560			
Gas Sand			620	700	Small show of oil at 645'		
1st Salt Sand			720	1090			
2nd Salt Sand			1140	1170			
3rd Salt Sand			1280	1475			
Sand			1510	1590			
Maxon Sand			1715	1728			
Little Lime			1740	1765			
Pencil Cave			1765	1787			
Big Lime			1787	1844	Show of oil & gas at 1844 ft		
Big Injun			1844	1990			
Slate			1990	2002			
Squaw Sand			2002	2035	No Berea		
Gantz			2130	2142			
50-Foot			2164	2194			
30-Foot			2351	2365			
Gordon Stray			2373	2400			
Gordon			2412	2481	Gas 2420 to 2432		
Fifth Sand			2632	2640	No Fourth Sand		
Total depth				2650			

