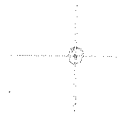


LATITUDE 39° 02' 30"

39° 02' 30"

LONGITUDE



7.5 OGIS topo location

7.5' loc 1.13S 15' loc \_\_\_\_\_  
                  1.21W (calc.) \_\_\_\_\_

Company \_\_\_\_\_

Farm \_\_\_\_\_

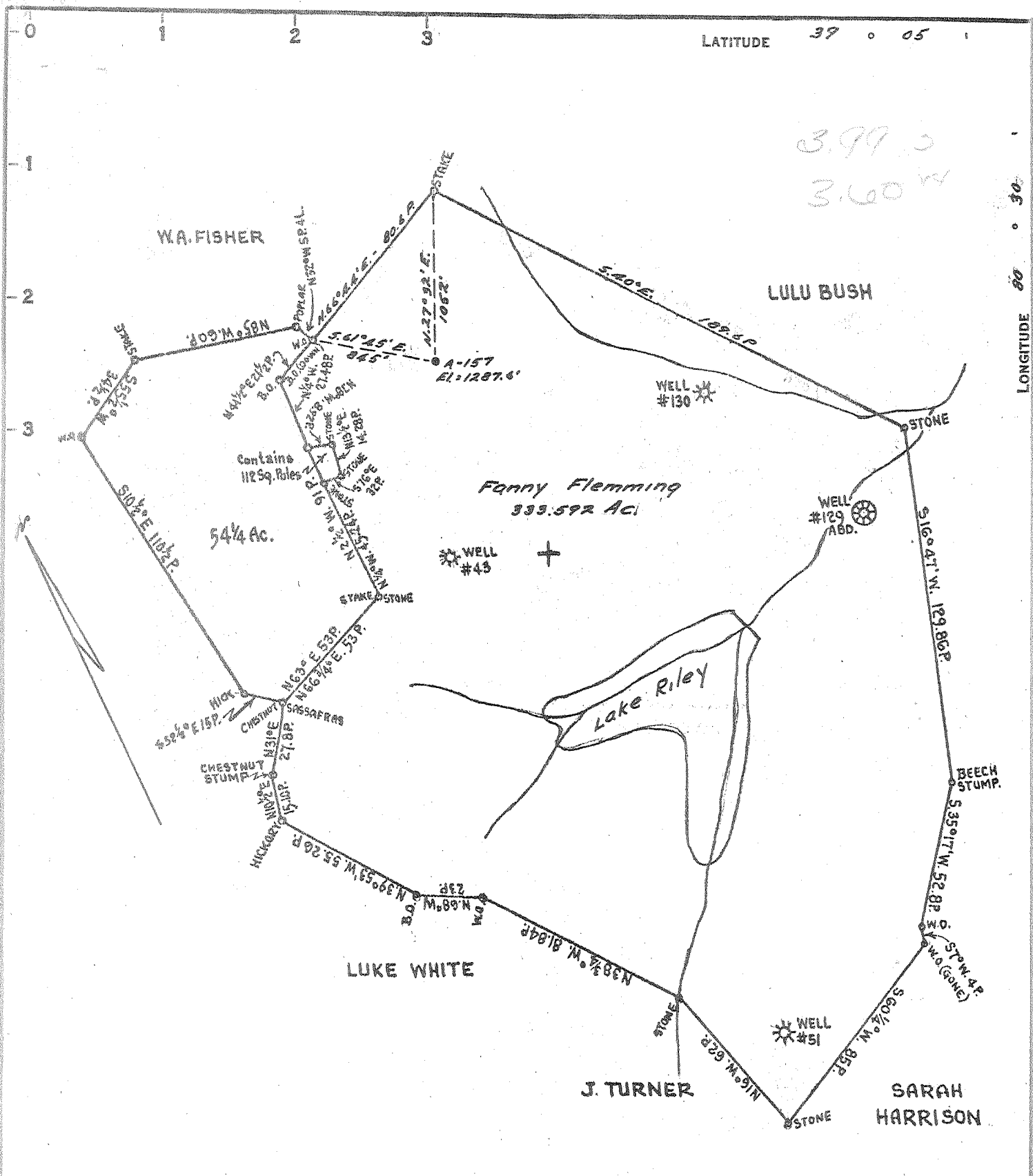
Quad CAMDEN 7 1/2'

County LEWIS

District COURT HOUSE

WELL LOCATION MAP

File No. 041-633A



LATITUDE 39 ° 05

LONGITUDE 80 ° 30

3.99  
3.60

COAL OWNED BY \_\_\_\_\_

NEW LOCATION.....  
 DRILL DEEPER.....  
 ABANDONMENT.....

COMPANY Cumberland & Allegheny Gas  
 ADDRESS 800 Union Trust Bldg. Pgh. Pa.  
 FARM Fanny Flemming  
 TRACT \_\_\_\_\_ ACRES 333.59 LEASE NO. 253  
 WELL (FARM) No. \_\_\_\_\_ SERIAL No. 157  
 ELEVATION (SPIRIT LEVEL) 1287.6'  
 QUADRANGLE Vadis  
 COUNTY Lewis DISTRICT Courthouse  
 ENGINEER Thomas E. Targin  
 ENGINEER'S REGISTRATION No. 1503  
 FILE No. \_\_\_\_\_ DRAWING No. Y-15-164  
 DATE 10 Jan. 1955 SCALE 1" = 800'

STATE OF WEST VIRGINIA  
 DEPARTMENT OF MINES  
 OIL AND GAS DIVISION  
 CHARLESTON

**WELL LOCATION MAP**

FILE No. LEW-633-A

+ DENOTES LOCATION OF WELL ON UNITED STATES TOPOGRAPHIC MAPS. SCALE 1 TO 62,500. LATITUDE AND LONGITUDE LINES BEING REPRESENTED BY BORDER LINES AS SHOWN.  
 - DENOTES ONE INCH SPACES ON BORDER LINE OF ORIGINAL TRACING.



STATE OF WEST VIRGINIA  
DEPARTMENT OF MINES  
OIL AND GAS DIVISION

WELL RECORD

776

Permit No. 6334 Oil or Gas Well X (KIND)

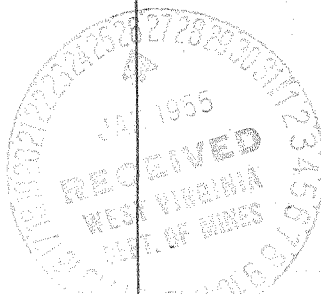
Company DUMBERLAND AND ALLEGHENY GAS COMPANY  
 Address 800 Union Trust Bldg., Pgh., Penna.  
 Farm Fannie Fleming Acres 333.59  
 Location (waters) \_\_\_\_\_  
 Well No. 157 Elev. 1287.6'  
 District Courthouse County Lewis  
 The surface of tract is owned in fee by \_\_\_\_\_  
 Address \_\_\_\_\_  
 Mineral rights are owned by \_\_\_\_\_  
 Address \_\_\_\_\_  
 Drilling commenced September 22, 1916  
 Drilling completed November 6, 1916  
 Date Shot \_\_\_\_\_ From \_\_\_\_\_ To \_\_\_\_\_  
 With \_\_\_\_\_  
 Open Flow \_\_\_\_\_ /10ths Water in \_\_\_\_\_ Inch  
 \_\_\_\_\_ /10ths Merc. in \_\_\_\_\_ Inch  
 Volume \_\_\_\_\_ Cu. Ft.  
 Rock Pressure \_\_\_\_\_ lbs. \_\_\_\_\_ hrs.  
 Oil \_\_\_\_\_ bbls., 1st 24 hrs.  
 Fresh water \_\_\_\_\_ feet \_\_\_\_\_ feet  
 Salt water \_\_\_\_\_ feet \_\_\_\_\_ feet

Casing and Tubing	Used in Drilling	Left in Well	Packers
Size			
16			Kind of Packer
13			
10	222	Pulled	Size of <u>6-5/8 x 2</u>
8 1/4	853	Pulled	
6 5/8	1855	1855	Depth set <u>2473</u>
5 3/16			
3			Perf. top
2			Perf. bottom
Liners Used			Perf. top
			Perf. bottom

CASING CEMENTED \_\_\_\_\_ SIZE \_\_\_\_\_ No. Ft. \_\_\_\_\_ Date \_\_\_\_\_  
 COAL WAS ENCOUNTERED AT 290 FEET \_\_\_\_\_ INCHES  
720 FEET \_\_\_\_\_ INCHES FEET \_\_\_\_\_ INCHES  
 FEET \_\_\_\_\_ INCHES FEET \_\_\_\_\_ INCHES

Formation	Color	Hard or Soft	Top	Bottom	Oil, Gas or Water	Depth Found	Remarks
Slate			0	290			
Native Coal			290	294			
Slate & Shells			294	720			
Pittsburgh Coal			720	732			
Shells			732	745	No Little Dunkard--Shells		
Gas Sand			745	794	No Big Dunkard --Shells		
Slate & Shells			794	990			
1st Salt Sand			990	1082			
2nd Salt Sand			1110	1270			
3rd Salt			1290	1466			
Slate & Shells			1466	1770			
Maxon			1770	1790			
Little Lime			1805	1825			
Pencil Cave			1825	1840			
Big Lime			1840	1896			
Big Injun			1896	2045	Gas at 2005'		
Squaw			2057	2100			
Slate & Shells			2100	2230			
Gantz			2230	2297			
Slate & Shells			2297	2320			
Fifty Foot			2320	2370			
Thirty Foot			2400	2426'			
Gordon Stray			2468	2498	Gas at 2475'		
Gordon			2505	2585	Gas at 2550 to 2560		
Slate & Shells			2585	2660			
Fourth			2660	2667			
Slate & Shells			2667	2730			
Fifth			2730	2736	Sand poor--no gas		
Slate			2736	2760			

13 jts. 2" anchor (287') on top of which is one 6-5/8 x 2 Spring packer, 1 - 2" R. & L. nip. & cplg., and 115 jts. (2482') 2" tubing shot with 30 qts. 4/4 x 10" Shot Top of Shot ~~at~~ 2548' Bottom of shot 2558'



APR 22 1955

