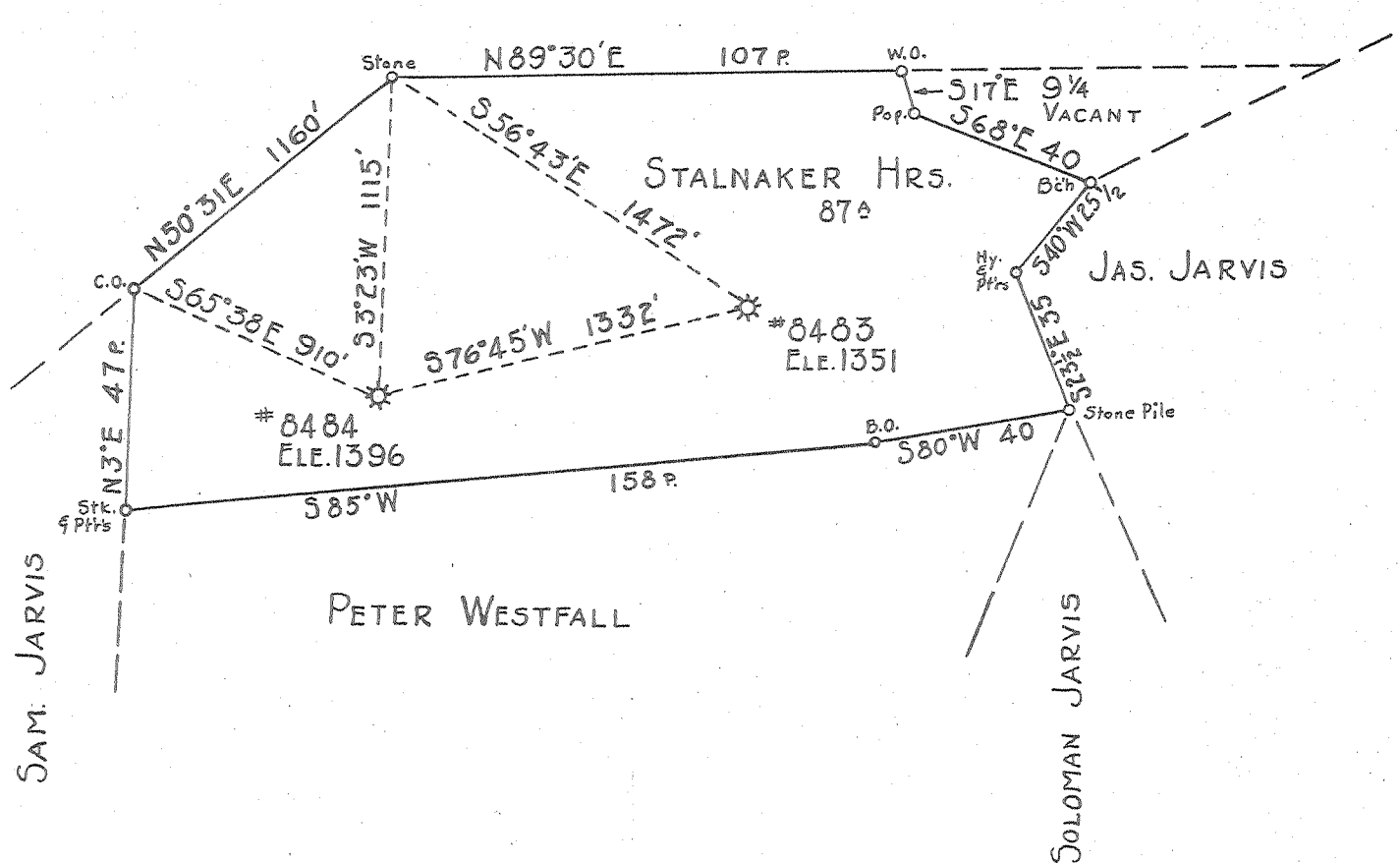


R. H. HALL ET.AL.



New Location...   
 Drill Deeper...   
 Abandonment...  8483

MAP SH. 69 Sq. 5-29 E-3 F.B. 591 P.13-14

Company HOPE NATURAL GAS Co.  
 Address CLARKSBURG W.VA.  
 Farm STALNAKER HEIRS  
 Tract \_\_\_\_\_ Acres 87 Lease No. 53325  
 Well (Farm) No. \_\_\_\_\_ Serial No. SEE ABOVE  
 Elevation (Spirit Level) SEE ABOVE  
 Quadrangle VADIS  
 County LEWIS District COURT HOUSE  
 Engineer W.M. Brewer  
 Engineer's Registration No. 900  
 File No. \_\_\_\_\_ Drawing No. \_\_\_\_\_  
 Date 6-5-44 Scale 1" = 40 Po.

STATE OF WEST VIRGINIA  
 DEPARTMENT OF MINES  
 OIL AND GAS DIVISION  
 CHARLESTON

**WELL LOCATION MAP**  
 FILE NO. LEW-262-14-#8483  
LEW-677-A-#8484

+ Denotes location of well on United States Topographic Maps, scale 1 to 62,500, latitude and longitude lines being represented by border lines as shown.

- Denotes one inch spaces on border line of original tracing.



780

STATE OF WEST VIRGINIA  
DEPARTMENT OF MINES  
OIL AND GAS DIVISION

1457

Quadrangle Wells

WELL RECORD

Permit No. Lew-677 A

Oil or Gas Well Gas  
(KIND)

Company Hope Natural Gas Company  
 Address Clarksburg, West Virginia  
 Farm Stalnaker Heirs Acres 87  
 Location (waters) \_\_\_\_\_  
 Well No. 8484 Elev. 1396  
 District Court House County Lewis  
 The surface of tract is owned in fee by \_\_\_\_\_  
 Address \_\_\_\_\_  
 Mineral rights are owned by \_\_\_\_\_  
 Address \_\_\_\_\_  
 Drilling commenced Mar. 22, 1916  
 Drilling completed July 23, 1916  
 Date Shot \_\_\_\_\_ From \_\_\_\_\_ To \_\_\_\_\_  
 With \_\_\_\_\_  
 Open Flow \_\_\_\_\_ /10ths Water in \_\_\_\_\_ Inch  
 \_\_\_\_\_ /10ths Merc. in \_\_\_\_\_ Inch  
 Volume \_\_\_\_\_ Cu. Ft.  
 Rock Pressure \_\_\_\_\_ lbs. \_\_\_\_\_ hrs.  
 Oil \_\_\_\_\_ bbls., 1st 24 hrs.  
 Fresh water \_\_\_\_\_ feet \_\_\_\_\_ feet  
 Salt water \_\_\_\_\_ feet \_\_\_\_\_ feet

Casing and Tubing	Used in Drilling	Left in Well	Packers
Size			
16			Kind of Packer
13			
10	193	193	Size of
8 1/4	825'6"	825'6"	
6 5/8	1853'5"	1853'5"	Depth set
5 3/16			
3	2684'	2684'	Perf. top
2	2682'9"	<u>Quilled</u>	Perf. bottom
Liners Used			Perf. top
			Perf. bottom

CASING CEMENTED \_\_\_\_\_ SIZE \_\_\_\_\_ No. Ft. \_\_\_\_\_ Date \_\_\_\_\_

COAL WAS ENCOUNTERED AT \_\_\_\_\_ FEET \_\_\_\_\_ INCHES  
 \_\_\_\_\_ FEET \_\_\_\_\_ INCHES \_\_\_\_\_ FEET \_\_\_\_\_ INCHES  
 \_\_\_\_\_ FEET \_\_\_\_\_ INCHES \_\_\_\_\_ FEET \_\_\_\_\_ INCHES

Formation	Color	Hard or Soft	Top	Bottom	Oil, Gas or Water	Depth Found	Remarks
Pittsburgh Coal			190	194			
Dunkard Sand			475	654			
Salt Sand			865	1166			
Saxon Sand			1644	1664			
Lime			1745	1793	Oil 1781	Gas 1781	
Injun Sand			1793	1910			
Area Sand						Gas 1939	
Santa Sand			2215	2236			
Fifty Foot Sand							
Thirty Foot Sand			2383	2400			
Stray Sand			2403	2431			
Gordon Sand			2434	2479		Gas 2436	
Fourth Sand						Gas 2450	
Fifth Sand			2625	2638		Gas 2627	
Sayard Sand							
TOTAL DEPTH				2659			

