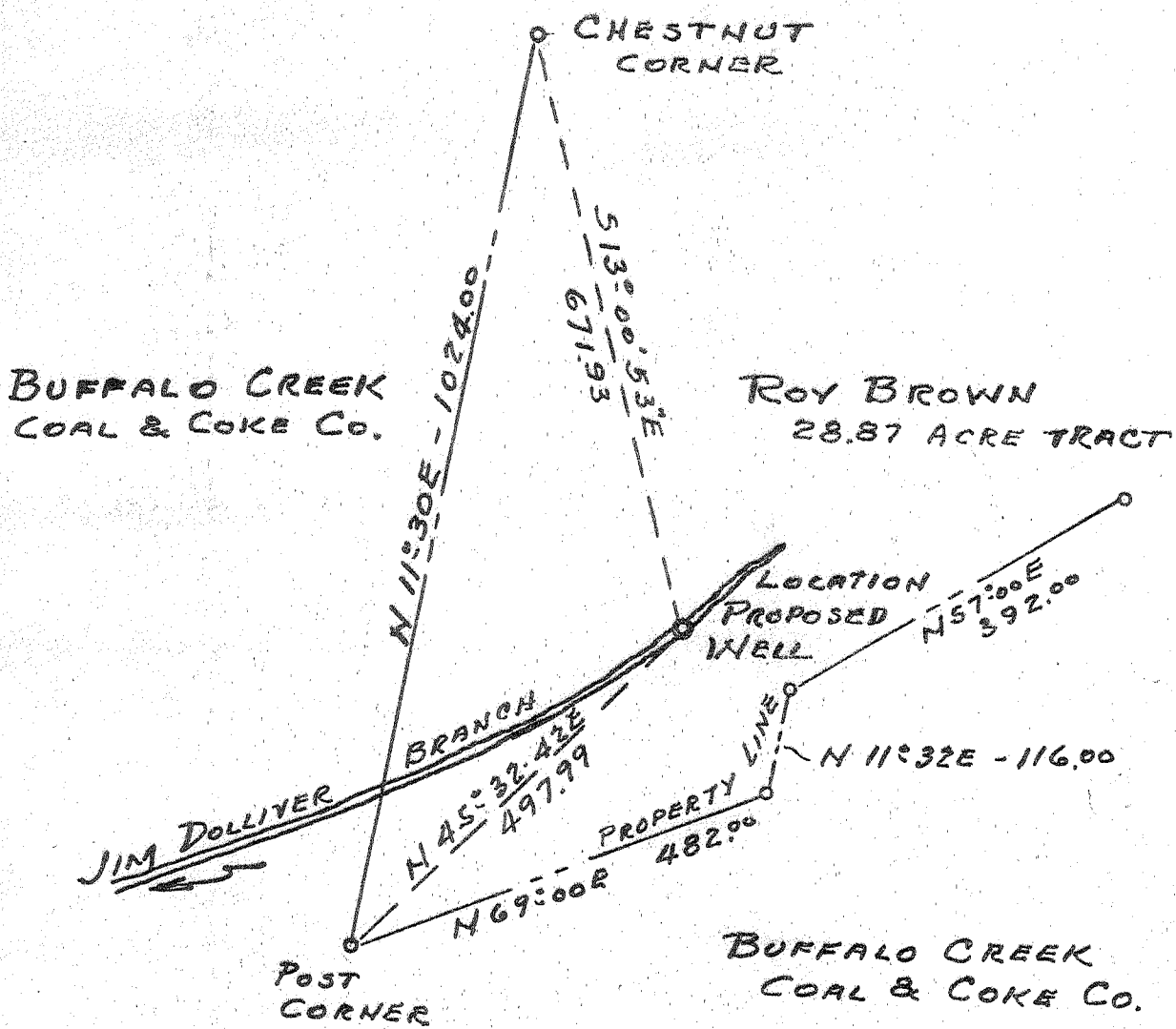


Latitude 37° 45'

Longitude 81° 45'

0.81 S
3.35 W



- New Location...
- Drill Deeper.....
- Abandonment.....

Company PERRY GAS COMPANY
 Address Box 563 HUNTINGTON, WVA
 Farm ROY BROWN
 Tract _____ Acres 2887 Lease No. _____
 Well (Farm) No. 1 Serial No. _____
 Elevation (Spirit Level) 1005.02
 Quadrangle GILBERT NE
 County LOGAN District TRIADDELPHIA
 Engineer N.L. SEFTON
 Engineer's Registration No. 1832
 File No. _____ Drawing No. _____
 Date Nov. 6 1953 Scale 1" = 200'

STATE OF WEST VIRGINIA
 DEPARTMENT OF MINES
 OIL AND GAS DIVISION
 CHARLESTON

WELL LOCATION MAP
 FILE NO. LOG-378

+ Denotes location of well on United States Topographic Maps, scale 1 to 62,500, latitude and longitude lines being represented by border lines as shown.
 - Denotes one inch spaces on border line of original tracing.

3-3 266 Deep well (Coniferous)



STATE OF WEST VIRGINIA
DEPARTMENT OF MINES
OIL AND GAS DIVISION 6

Quadrangle Belmont

WELL RECORD

Permit No. LOG-378

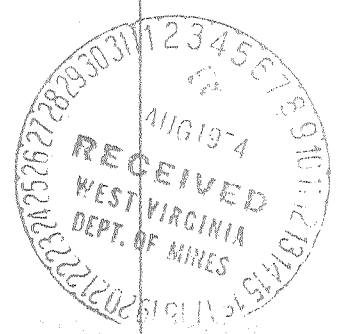
Oil or Gas Well Gas
(KIND)

Company Perry Gas Company
Address Box 962, Logan, W. Va.
Farm Roy Brown Acres 35
Location (waters) Big Huff Creek
Well No. 1 Elev. 1005.02
District Triadelphia County Logan
The surface of tract is owned in fee by Roy Brown
Address Cyclone, W. Va.
Mineral rights are owned by Same
Address _____
Drilling commenced Nov. 16, 1953
Drilling completed July 22, 1954
Date Spnt 7/22/54 From 3760 To 5315
With 10,800 lb. 80% Gelatin
Open Flow 3/10ths Water in 7 Inch
/10ths Merc. in Inch
Volume 835,000 Cu. Ft.
Rock Pressure 790 lbs. 36 hrs.
Oil _____ bbls., 1st 24 hrs.
Fresh water _____ feet
Salt water _____ feet

Casing and Tubing	Used in Drilling	Left in Well	Packers
Size			Kind of Packer
16			None
18	200 ft.	200 ft.	Size of
10	819 ft.		Depth set
8 1/4	1421 ft.		Perf. top
6 1/2	2224 ft.	2224 ft.	Perf. bottom
5 3/16			Perf. top
3			Perf. bottom
2			Perf. top
Liners Used			Perf. bottom

CASING CEMENTED _____ SIZE _____ No. Ft. _____ Date _____
COAL WAS ENCOUNTERED AT 68 to 70 FEET 24 INCHES
FEET INCHES FEET INCHES
FEET INCHES FEET INCHES

Formation	Color	Hard or Soft	Top	Bottom	Oil, Gas or Water	Depth Found	Remarks
Soil			0	2			
Sand			2	42	Water	13ft.	2 bailers per hr.
Slate			42	68			
Coal			68	70			
Sand			70	109	Water	109	Hole full
Broken Sand			109	132			
Sand	Grey		132	140			
Slate			140	312			
Sand			312	408			
Slate			408	418			
Sand			418	504			
Slate & shells			504	537			
Sand			537	649			
Slate & Shells			649	686			
Sand			686	754			
Slate			754	761			
Sand		Hard	761	1257	Salt Water		
Slate			1257	1276			
Sand			1276	1374			
Slate			1374	1377			
Sand			1377	1405			
Slate			1405	1450			
Sand			1450	1554	Gas	1544	Showing
Slate & Shells			1554	1644			
Sand		Hard	1644	1775			
Slate & Shells			1775	1814			
Rock	Red		1814	1829			
Sand			1829	1967	Gas	1860	Show
Slate			1967	1982	Gas	1874	.7 Water in 2 inch OF
Rock	Red		1982	2006			
Slate & Shells			2006	2057			
Rock	Red		2057	2092			
Slate			2092	2104			
Waxton Sand			2104	2128			
Slate & Shells			2128	2166			
Pencil Cave			2166	2185			
Little lime			2185	2215			
Big lime			2215	2581			



Formation	Color	Hard or Soft	Top 6	Bottom	Oil, Gas or Water	Depth Found	Remarks
Rock	Red	<i>Massachusetts</i>	2581	2606			
Slate & Shells			2606	3094			
Shale	Brown		3094	3106			
Berea Sand			3106	3141			
Slate			3141	3160			
Slate & Shells			3160	3915	Gas	3766	Showing
Shale	Brown		3915	4000			
Slate	White		4000	4160			
Shale	Brown		4160	4200	Gas	4184	Showing
Slate	White		4200	4320			
Slate	Black		4320	4400			
Slate	White		4400	4465			
Shale	Brown		4465	4600	Gas	4509	Showing
Slate			4600	4760			
Shale	Brown		4760	4820			
Slate	White		4820	5040			
Shale	Brown		5040	5217	Gas	5135	Show
Lime Shell			5217	5225			
Slate	White		5225	5255	Gas	5255	Show
Shale	Brown		5255	5306			
Coniferous Lime			5306	5315			

(461)

5306
1005
4301

Date August 2, 1954

APPROVED Perry Gas Company, Owner

By Russell R. Perry
(Title)