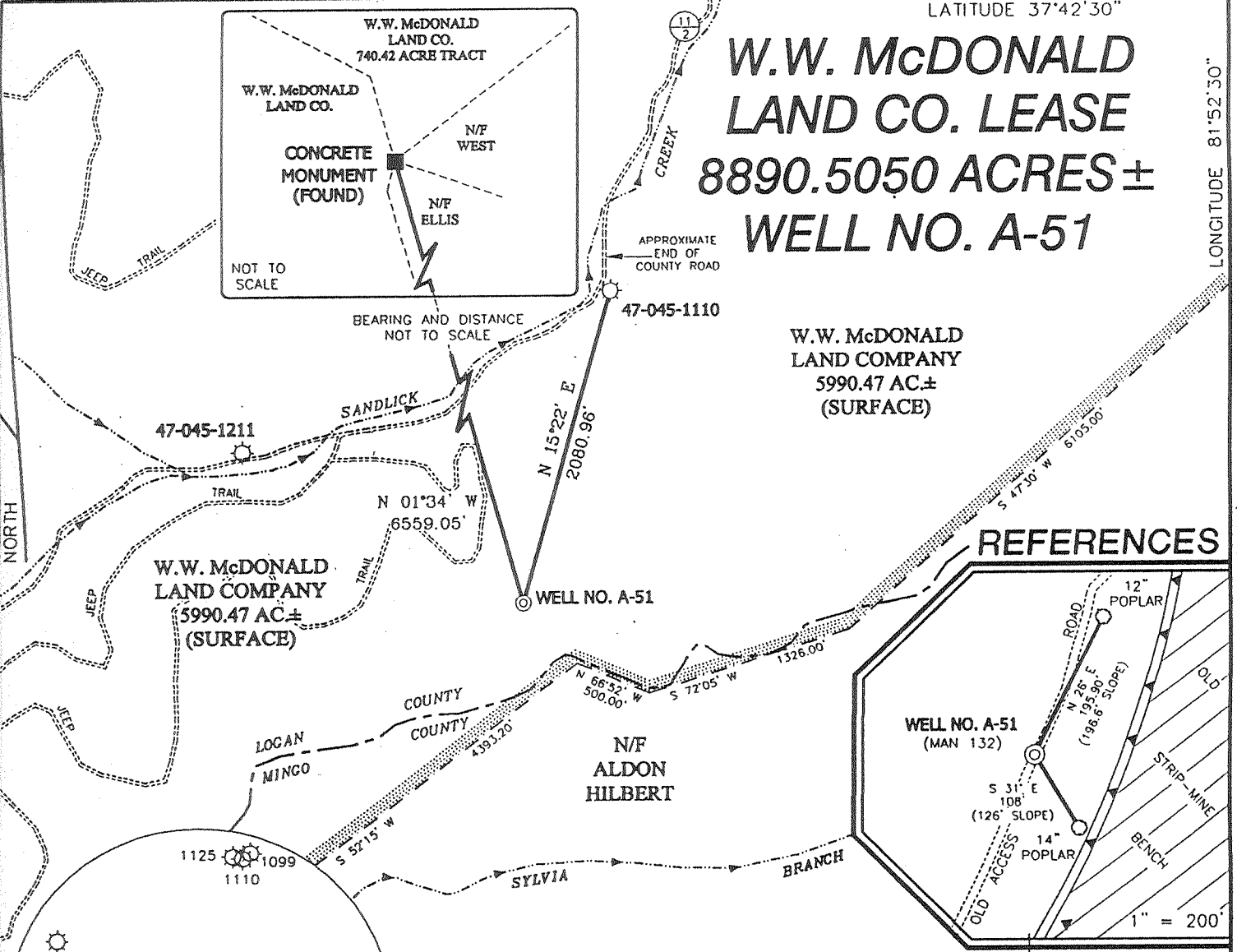
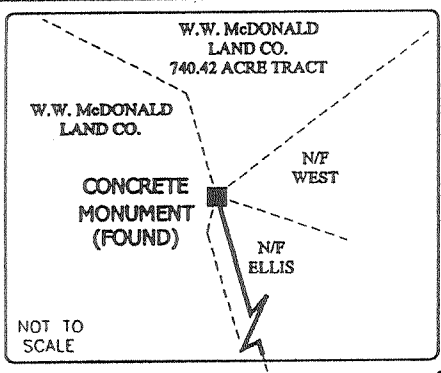
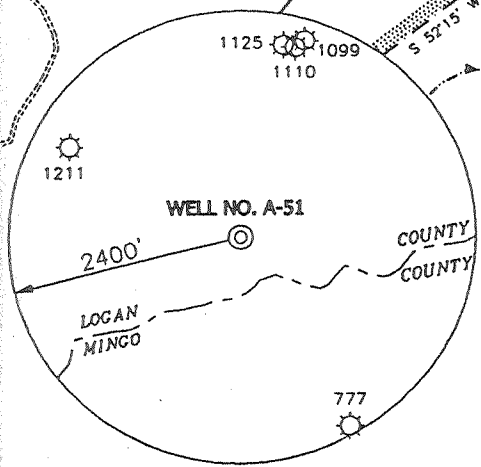
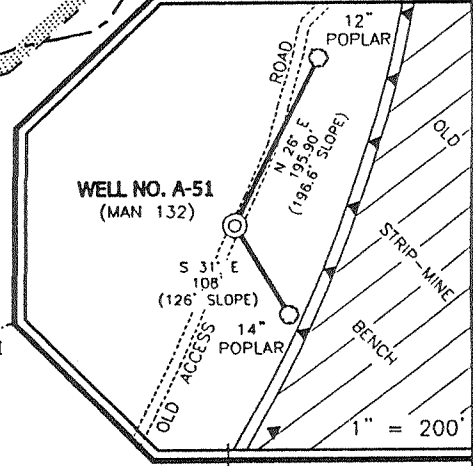


# W.W. McDONALD LAND CO. LEASE 8890.5050 ACRES ± WELL NO. A-51



W.W. McDONALD  
LAND COMPANY  
5990.47 AC ±  
(SURFACE)

### REFERENCES



### NOTES ON SURVEY

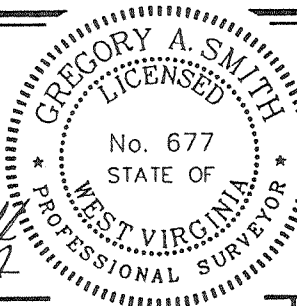
1. TIES TO WELLS AND CORNERS ARE BASED ON STATE PLANE GRID NORTH WV SOUTH ZONE NAD '27.
2. TIES TO REFERENCES ARE BASED ON MAGNETIC NORTH 3/11/99.
3. LEASE BOUNDARY SHOWN HEREON TAKEN FROM LOGAN COUNTY DEED BOOK 39/143.
4. SURFACE OWNER INFORMATION TAKEN FROM THE ASSESSOR AND COUNTY CLERK RECORDS OF LOGAN COUNTY IN MARCH, 1999.
5. WELL LAT./LONG. ESTABLISHED BY DGPS(SUBMETER MAPPING GRADE).

2.655  
.49

WELL NO. A-51  
STATE PLANE  
COORDINATES  
  
(N) 245,123  
(E) 1,744,201

I THE UNDERSIGNED, HEREBY CERTIFY THAT THIS PLAT IS CORRECT TO THE BEST OF MY KNOWLEDGE AND BELIEF AND SHOWS ALL THE INFORMATION REQUIRED BY LAW AND THE REGULATIONS ISSUED AND PRESCRIBED BY THE DEPARTMENT OF ENERGY.

P.S. 677 *Gregory A. Smith*



(+) DENOTES LOCATION OF WELL ON UNITED STATES TOPOGRAPHIC MAPS.  
DATE MARCH 23, 19 99  
OPERATORS WELL NO. NO. A-51  
API WELL NO. 47-045-01320  
STATE COUNTY PERMIT

MINIMUM DEGREE OF ACCURACY 1 / 2500 FILE NO. 3850PA51 (76-33)  
PROVEN SOURCE OF ELEVATION JUNCTION OF ROADS ELEVATION 800'  
SCALE 1" = 1000'

STATE OF WEST VIRGINIA  
DIVISION OF ENVIRONMENTAL PROTECTION  
OFFICE OF OIL AND GAS

WELL TYPE : OIL  GAS  LIQUID INJECTION  WASTE DISPOSAL  IF "GAS" PRODUCTION  STORAGE  DEEP  SHALLOW

LOCATION :  
ELEVATION 1470' WATERSHED SANDLICK CREEK  
DISTRICT TRIADELPHIA COUNTY LOGAN QUADRANGLE MAN 7.5'  
SURFACE OWNER W.W. McDONALD LAND COMPANY ACREAGE 5990.47  
ROYALTY OWNER W.W. McDONALD LAND COMPANY LEASE ACREAGE 8890.505  
PROPOSED WORK : LEASE NO. \_\_\_\_\_  
DRILL  CONVERT  DRILL DEEPER  REDRILL  FRACTURE OR STIMULATE  PLUG OFF OLD FORMATION  PERFORATE NEW FORMATION  PLUG AND ABANDON  CLEAN OUT AND REPLUG  OTHER \_\_\_\_\_  
PHYSICAL CHANGE IN WELL (SPECIFY) \_\_\_\_\_ TARGET FORMATION DEVONIAN SHALE  
ESTIMATED DEPTH 6500'

WELL OPERATOR BLAZER ENERGY CORPORATION DESIGNATED AGENT RICHARD SMELTZER  
ADDRESS P.O. BOX 2347 CHARLESTON, WV 25328 ADDRESS P.O. BOX 2347 CHARLESTON, WV 25328

DEEP WELL

66 265

COUNTY NAME LOGAN  
PERMIT 1320

APR 26 1999

WR-35

RECEIVED  
Office of Oil & Gas  
Permitting  
SEP 16 1999  
WV Division of  
Environmental Protection

20-Apr-99  
API # 47-045-01320

State of West Virginia  
Division of Environmental Protection  
Section of Oil and Gas

Reviewed AS

Well Operator's Report of Well Work

Farm Name: McDonald Land Co.

Operator Well No.: A-51

LOCATION: Elevation: 1,470.00      Quadrangle: Man  
District: Triadelphia      County: Logan  
Latitude: 13980 Feet South of 37 Deg. 42 Min. 30 Sec.  
Longitude: 2570 Feet West of 81 Deg. 52 Min. 30 Sec.

Company: BLAZER ENERGY CORPORATION  
P.O. BOX 2347  
CHARLESTON, WV 25328

Agent: Richard Smeltzer

Inspector: Ofie Helmick

Permit Issued: 04/23/99

Well work commenced: 7/6/99

Well work completed: 7/26/99

Verbal Plugging

Permission granted on:

Rotary Rig X Cable Rig

Total Depth 5688 feet

Fresh water depths (ft) 60

Salt water depths (ft) 1459

Is coal being mined in area?

Coal Depths (ft): 8,60,88,395,633,709

| Casing & Tubing Size | Used in Drilling | Left in Well | Cement Fill Up Cu. Ft. |
|----------------------|------------------|--------------|------------------------|
| 13 3/8"              | 23'              | 23'          | Grtd                   |
| 9 5/8"               | 806'             | 806'         | 307 Ft <sup>3</sup>    |
| 7"                   | 2802'            | 2802'        | 520 Ft <sup>3</sup>    |
| 4 1/2"               | 5674'            | 5674'        | 459 Ft <sup>3</sup>    |
|                      |                  |              |                        |

OPEN FLOW DATA

Producing formation L Shale, U Shale, Weir/Berea

Pay Zone Depth (ft): See

Gas: Initial open flow 901 MCF/d

Oil: Initial open flow            Bbl/d Attached

Final open flow: 1950 MCF/d

Final open flow:           

Time of open flow between initial and final tests            Hours

Static rock pressure 740 psig (surface pressure) after            Hours

Second producing formation           

Pay Zone Depth (ft):           

Gas: Initial open flow            MCF/d

Oil: Initial open flow            Bbl/d

Final open flow:            MCF/d

Final open flow:           

Time of open flow between initial and final tests            Hours

Static rock pressure            psig (surface pressure) after            Hours

NOTE: ON BACK OF THIS FORM PUT THE FOLLOWING: 1) DETAILS OF PERFORATED INTERVALS, FRACTURING OR STIMULATING, PHYSICAL CHANGE, ETC. 2) THE WELL LOG WHICH IS A SYSTEMATIC DETAILED GEOLOGICAL RECORD OF ALL FORMATIONS, INCLUDING COAL ENCOUNTERED BY THE WELLBOF

For: BLAZER ENERGY CORPORATION

By: Barbara A. Hubbard  
Date: 9-15-99

SEP 20 1999

LOG 1320

**EASTERN STATES OIL & GAS, INC.**  
**WR-35 COMPLETION REPORT - Attachment**  
**Well Treatment Summary**

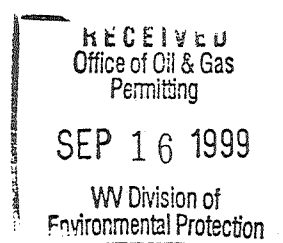
Well: McDonald A-51

API# 47-045-01320

| Date                               | 7-23-99        | 7-23-99        | 7-23-99        |  |  |
|------------------------------------|----------------|----------------|----------------|--|--|
| Type Frac                          |                |                |                |  |  |
| Acid, N <sub>2</sub> , Foam, Water | N <sup>2</sup> | N <sup>2</sup> | N <sup>2</sup> |  |  |
| Zone Treated                       | Lower Shale    | Upper Shale    | Weir/Berea     |  |  |
| # Perfs                            | 26             | 51             | 27             |  |  |
| From - To:                         | 4987-5620      | 3940-4825      | 3151-3637      |  |  |
| BD Pressure @ psi                  | 3787           | 2550           | 2589           |  |  |
| ATP psi                            | 3450           | 2878           | 2299           |  |  |
| Avg. Rate, B=B/M, S= SCF/M         | 45,022 S       | 52,320 S       | 50,150 S       |  |  |
| Max. Treat Press psi               | 4146           | 4200           | 4234           |  |  |
| ISIP psi                           | 3200           | 2800           | 2860           |  |  |
| Frac Gradient                      | .72            | .74            | .95            |  |  |
| 10 min S-I Pressure                | 1781           | 1382           | 1158           |  |  |
| Material Volume                    |                |                |                |  |  |
| Sand-sks                           |                |                |                |  |  |
| Water-bbl                          |                |                |                |  |  |
| SCF N <sub>2</sub>                 | 595,398        | 894,552        | 455,929        |  |  |
| Acid-gal                           | 504 gal 7.5%   | 882 gal 7.1%   | 672 gal 7.1%   |  |  |
| NOTES:                             |                |                |                |  |  |

**Formation Record**

| TOP  | BOTTOM | FORMATION    | Remarks  |
|------|--------|--------------|--|
| 0    | 8      | Fill         |  |
| 8    | 10     | Coal & Shale |  |
| 10   | 60     | Sand         |  |
| 60   | 63     | Coal & Shale | Hole damp @ 60'                                    |
| 63   | 88     | Sand & Shale |  |
| 88   | 90     | Coal         |  |
| 90   | 395    | Sand & Shale |  |
| 395  | 399    | Coal & Shale |  |
| 399  | 633    | Sand & Shale |  |
| 633  | 636    | Coal         |  |
| 636  | 709    | Sand & Shale |  |
| 709  | 712    | Coal         |  |
| 712  | 837    | Sand & Shale |  |
| 837  | 935    | Sand         |  |
| 935  | 1219   | Sand & Shale |  |
| 1220 | 1860   | Salt Sand    | 1/4" strm wtr @ 1459', GT @ 1898' - NS             |
| 2153 | 2255   | Upper Maxton | GT @ 2340' - NS                                    |
| 2603 | 2634   | Lower Maxton | GT @ 2625' - NS                                    |
| 2671 | 2742   | Little Lime  |  |
| 2742 | 3035   | Big Lime     | GT @ 2814', 2846', 3113' - All NS                  |
| 3132 | 3256   | Weir         | GT @ 3300' - NS                                    |
| 3587 | 3616   | Sunbury      |  |
| 3616 | 3642   | Berea        |  |
| 3642 | 4657   | Upper Huron  | GT @ 3708', 4023' - All odor, GT @ 4272' - 103 mcf |
| 3970 |        | Gordon       |  |
| 4657 | 5114   | Lower Huron  | GT @ 4713' - 84 mcf, GT @ 4839' - 637 mcf          |
| 5114 | 5247   | Java         |  |
| 5247 | 5460   | Angola       | GT @ 5436' - 901 mcf                               |



045 1320

5460  
5680  
5688

Rhinestreet  
Onondaga  
TD (Drillers)

GT @ TD (5688') - 901 mcfd

RECEIVED  
Office of Oil & Gas  
Permitting  
SEP 16 1999  
WV Division of  
Environmental Protection

LOG 1320

SEP 20 1999