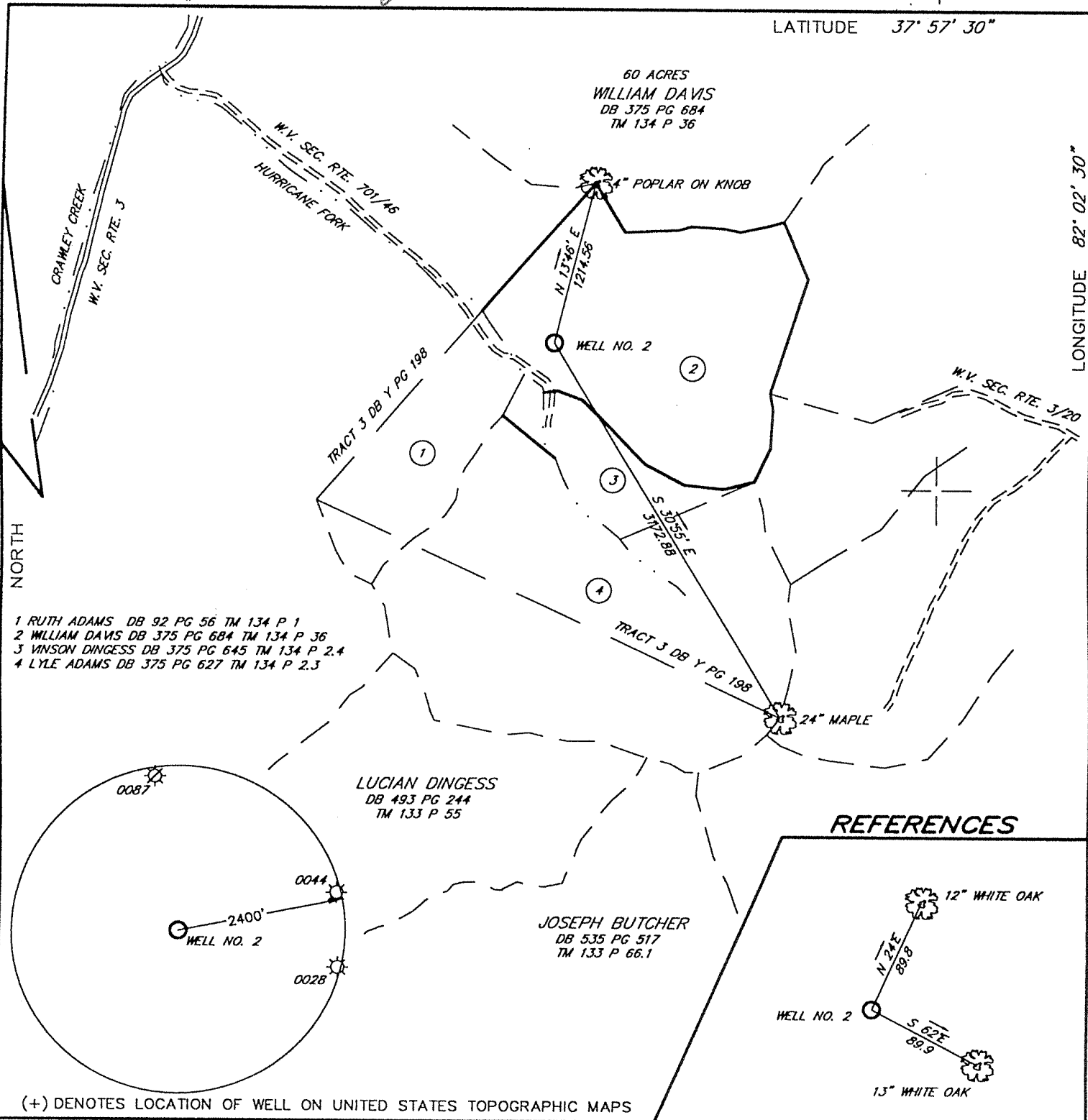


OKW 3/11/05

LONG. 82° 02' 58.0" ← 2200' W →

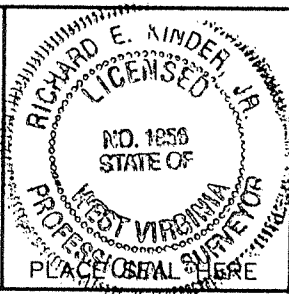
LATITUDE 37° 57' 30"

LONGITUDE 82° 02' 30"



FILE NO. 02186
 DRAWING NO. 02186
 SCALE 1" = 1000'
 MINIMUM DEGREE OF ACCURACY 1 : 2500
 PROVEN SOURCE OF ELEVATION GPS OBSERVATION

I THE UNDERSIGNED, HEREBY CERTIFY THAT THIS PLAT IS CORRECT TO THE BEST OF MY KNOWLEDGE AND BELIEF AND SHOWS ALL THE INFORMATION REQUIRED BY LAW AND THE REGULATIONS ISSUED AND PRESCRIBED BY THE DEPARTMENT OF ENVIRONMENTAL PROTECTION.
 (SIGNED) _____
 R.P.E. _____ L.L.S. 1956



STATE OF WEST VIRGINIA
 DEPARTMENT OF ENVIRONMENTAL PROTECTION
 OIL AND GAS DIVISION



DATE MARCH 18, 20 03
 OPERATOR'S WELL NO. ONEIDA BAPTIST INSTITUTE NO. 2
 API WELL NO. 47 - 45 - 01555
 STATE COUNTY PERMIT

WELL TYPE: OIL GAS X LIQUID INJECTION WASTE DISPOSAL
 (IF "GAS,") PRODUCTION X STORAGE DEEP SHALLOW

LOCATION: ELEVATION 891.3 WATERSHED HURRICANE FORK OF CRAWLEY CREEK
 DISTRICT GUYAN COUNTY LOGAN
 QUADRANGLE CHAPMANVILLE 7.5'

SURFACE OWNER WILLIAM DAVIS ACREAGE
 OIL & GAS ROYALTY OWNER ONEIDA BAPTIST INSTITUTE LEASE ACREAGE 413
 LEASE NO.

PROPOSED WORK: DRILL X CONVERT DRILL DEEPER REDRILL FRACTURE OR STIMULATE X PLUG OFF OLD FORMATION PERFORATE NEW FORMATION OTHER PHYSICAL CHANGE IN WELL (SPECIFY)

PLUG AND ABANDON CLEAN OUT AND REPLUG
 TARGET FORMATION SIFAGE ESTIMATED DEPTH 3505'
 WELL OPERATOR CABOT DESIGNATED AGENT THOMAS LIBERATORE
 ADDRESS 900 LEE STREET E. SUITE 1500 CHARLESTON, WV 25301 ADDRESS 900 LEE STREET E. SUITE 1500 CHARLESTON, WV 25301

(CHAPMANVILLE 245)

FORM WW-6

COUNTY NAME 106

PERMIT 1553

State of West Virginia
Division of Environmental Protection
Section of Oil and Gas
Well Operator's Report of Well Work

Ar 13

Farm Name: _____ Operator Well No.: Oneida Baptist Institute #2

LOCATION: Elevation: 891.3' Quadrangle: Chapmanville
District: Guyan County: Logan
Latitude: 7000' feet South of 37° DEG. 57' MIN. 30" SEC.
Longitude: 2200' feet West of 82° DEG. 02' MIN. 30" SEC.

Company: Cabot Oil & Gas Corporation
900 Lee Street East, Suite 500
Charleston, WV 25301

Casing & Tubing Size	Used in Drilling	Left In Well	Cement Fill Up Cu. Ft.
13-3/8"	43'	43'	
9-5/8"	453'	453'	225 sks
Well was plugged with verbal permission, see plugging affidavit.			
<div style="border: 2px solid black; padding: 5px; width: fit-content; margin: 0 auto;"> <p>RECEIVED Office of Oil & Gas Permitting JUL 28 2003 WV Department of Environmental Protection</p> </div>			

Agent: Thomas S. Liberatore
Inspector: Ralph Triplett
Permit Issued: 4/16/2003
Well Work Commenced: June 9, 2003
Well Work Completed: June 12, 2003
Verbal Plugging: YES
Permission granted on: June 12, 2003
Rotary X Cable _____
Total Depth (feet) 620
Fresh Water Depths (ft) 55, 330, 390
Salt Water Depths (ft) _____
Is coal being mined in area (Y/N)? YES
Coal Depths (ft) 333-336

OPEN FLOW DATA

Producing Formation N/A Pay Zone _____
Depth (ft) N/A
Gas: Initial Open Flow N/A MCF/d Oil: Initial Open Flow N/A Bbl/d
Final Open Flow N/A MCF/d Final Open Flow N/A Bbl/d
Time of open flow between initial and final tests N/A Hours
Static rock pressure N/A psig surface pressure after N/A Hours

Second Producing Formation _____ Pay Zone _____
Depth (ft) _____
Gas: Initial Open Flow _____ MCF/d Oil: Initial Open Flow _____ Bbl/d
Final Open Flow _____ MCF/d Final Open Flow _____ Bbl/d
Time of open flow between initial and final tests _____ Hours
Static rock pressure _____ psig surface pressure after _____ Hours

NOTE: ON BACK OF THIS FORM PUT THE FOLLOWING: 1.) DETAILS OF PERFORATED INTERVALS, FRACTURING OR STIMULATING, PHYSICAL CHANGE, ETC. 2.) THE WELL LOG WHICH IS SYSTEMATIC DETAILED GEOLOGICAL RECORD OF ALL FORMATIONS, INCLUDING COAL ENCOUNTERED BY THE WELLBORE

For: CABOT OIL & GAS CORPORATION
By: *[Signature]* Drilling Superintendent
Date: 7/23/03

SEP 05 2003

106
1553

LATITUDE 37° 57' 30"

LONGITUDE 82° 02' 30"

60 ACRES
WILLIAM DAVIS
DB 375 PG 684
TM 134 P 36

4" POPLAR ON KNOB

N 13° 46' E
1214.56

WELL NO. 2

TRACT 3 DB Y PG 198

S 30° 55' E
3172.88

TRACT 3 DB Y PG 198

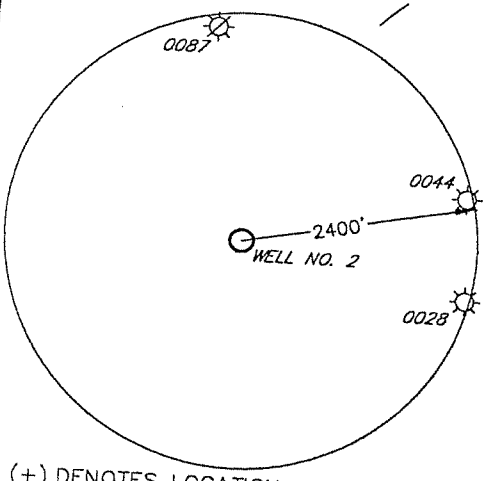
W.V. SEC. RTE. 3/20

CRAWLEY CREEK
W.V. SEC. RTE. 3

W.V. SEC. RTE. 701/46
HURRICANE FORK

NORTH

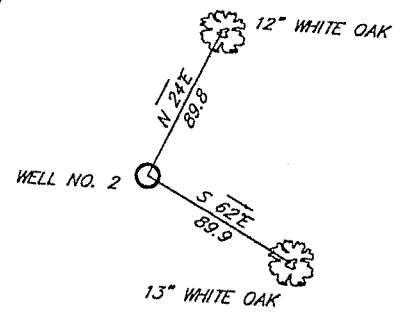
- 1 RUTH ADAMS DB 92 PG 56 TM 134 P 1
- 2 WILLIAM DAVIS DB 375 PG 684 TM 134 P 36
- 3 VINSON DINGESS DB 375 PG 645 TM 134 P 2.4
- 4 LYLE ADAMS DB 375 PG 627 TM 134 P 2.3



LUCIAN DINGESS
DB 493 PG 244
TM 133 P 55

JOSEPH BUTCHER
DB 535 PG 517
TM 133 P 66.1

REFERENCES

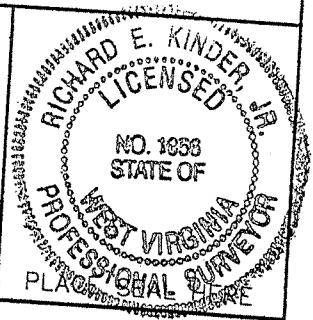


(+) DENOTES LOCATION OF WELL ON UNITED STATES TOPOGRAPHIC MAPS

FILE NO. 02186
 DRAWING NO. 02186
 SCALE 1" = 1000'
 MINIMUM DEGREE OF ACCURACY 1 : 2500
 PROVEN SOURCE OF ELEVATION GPS OBSERVATION

I THE UNDERSIGNED, HEREBY CERTIFY THAT THIS PLAT IS CORRECT TO THE BEST OF MY KNOWLEDGE AND BELIEF AND SHOWS ALL THE INFORMATION REQUIRED BY LAW AND THE REGULATIONS ISSUED AND PRESCRIBED BY THE DEPARTMENT OF ENVIRONMENTAL PROTECTION (SIGNED) _____

R.P.E. _____ L.L.S. 1956



STATE OF WEST VIRGINIA
 DEPARTMENT OF ENVIRONMENTAL PROTECTION
 OIL AND GAS DIVISION



DATE MARCH 18, 20 03
 OPERATOR'S WELL NO. ONEIDA BAPTIST INSTITUTE NO. 2
 API WELL NO. 47-45-1555P
 STATE COUNTY PERMIT

WELL TYPE: OIL GAS LIQUID INJECTION WASTE DISPOSAL
 (IF "GAS,") PRODUCTION STORAGE DEEP SHALLOW
 LOCATION: ELEVATION 891.3 WATERSHED HURRICANE FORK OF CRAWLEY CREEK
 DISTRICT GUYAN QUADRANGLE CHAPMANVILLE 7.5' COUNTY LOGAN

SURFACE OWNER WILLIAM DAVIS
 OIL & GAS ROYALTY OWNER ONEIDA BAPTIST INSTITUTE LEASE NO. _____ LEASE ACREAGE 413 ACREAGE _____

PROPOSED WORK: DRILL CONVERT DRILL DEEPER REDRILL FRACTURE OR STIMULATE PLUG OFF OLD FORMATION PERFORATE NEW FORMATION OTHER PHYSICAL CHANGE IN WELL (SPECIFY) _____

PLUG AND ABANDON CLEAN OUT AND REPLUG
 TARGET FORMATION _____ ESTIMATED DEPTH _____

WELL OPERATOR CABOT DESIGNATED AGENT THOMAS LIBERATORE
 ADDRESS 900 LEE STREET E. SUITE 1500 CHARLESTON, WV 25301 ADDRESS 900 LEE STREET E. SUITE 1500 CHARLESTON, WV 25301

AUG 08 2003

COUNTY NAME LOGAN
PERMIT 1555P