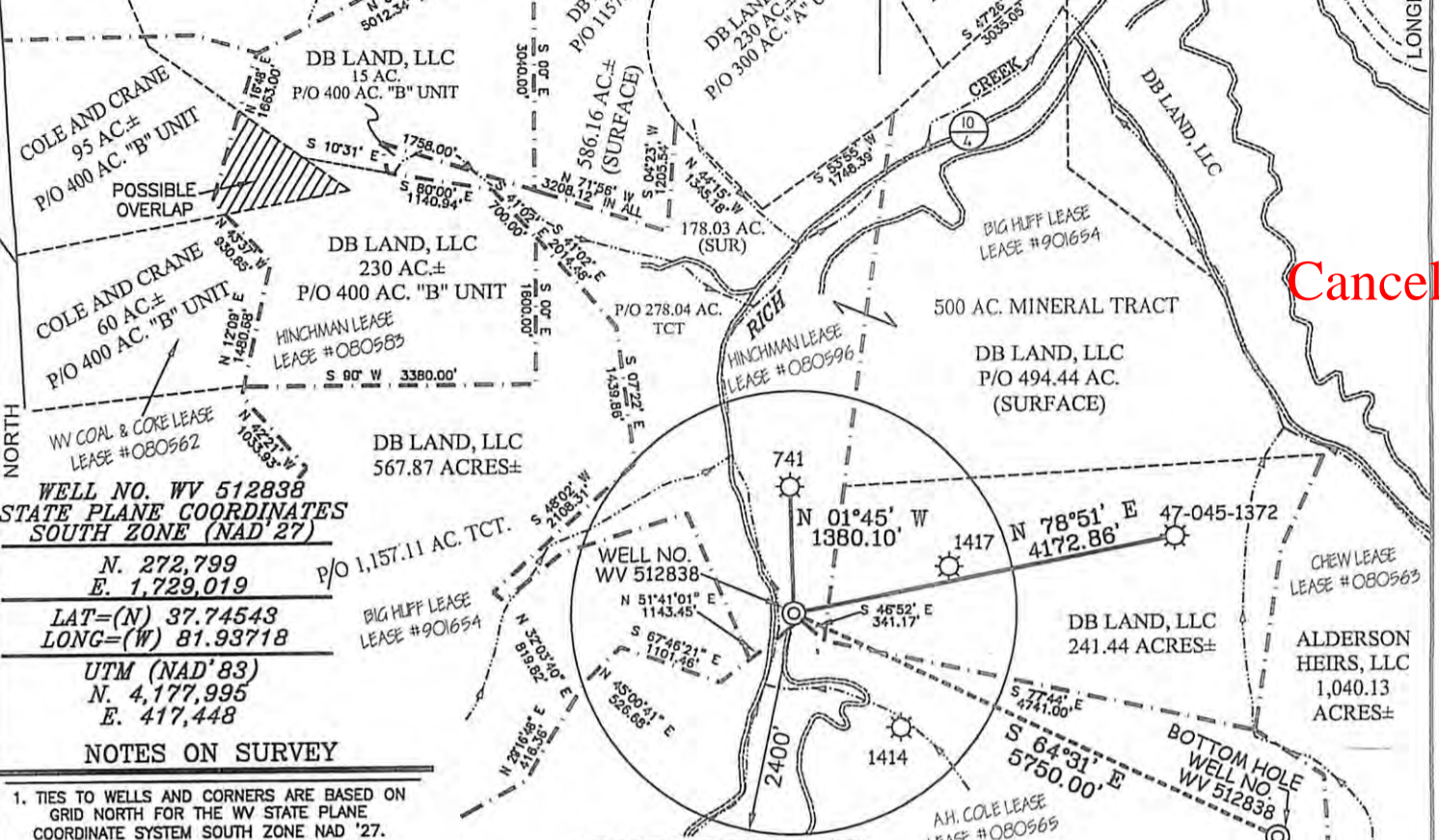


EQT PRODUCTION COMPANY BIG HUFF / COLE & CRANE WELL NO. WV 512838

N/F W.W. McDONALD LAND CO.



WELL NO. WV 512838
STATE PLANE COORDINATES
SOUTH ZONE (NAD'27)

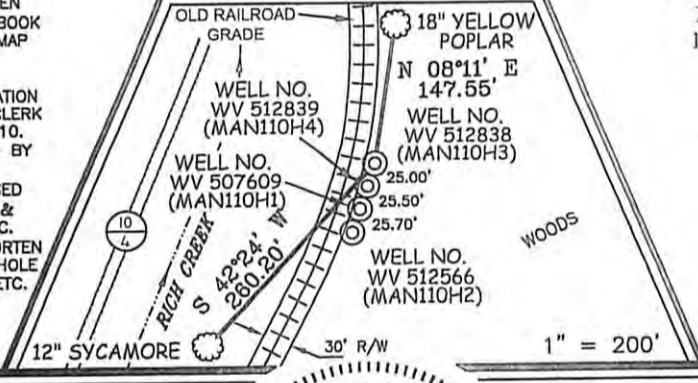
N. 272,799
E. 1,729,019
LAT=(N) 37.74543
LONG=(W) 81.93718
UTM (NAD'83)
N. 4,177,995
E. 417,448

NOTES ON SURVEY

1. TIES TO WELLS AND CORNERS ARE BASED ON GRID NORTH FOR THE WV STATE PLANE COORDINATE SYSTEM SOUTH ZONE NAD '27.
2. TIES TO REFERENCES ARE BASED ON MAGNETIC NORTH 09/03/09.
3. LEASE BOUNDARY SHOWN HEREON TAKEN FROM A DESCRIPTION RECORDED IN LEASE BOOK 15 PAGE 305 AND A PLAT RECORDED IN MAP BOOK 6 PAGE 144 & OTHER DEEDS/INFORMATION.
4. SURFACE OWNER AND ADJOINER INFORMATION TAKEN FROM THE ASSESSOR AND COUNTY CLERK RECORDS OF LOGAN COUNTY IN JULY, 2010.
5. WELL LAT./LONG. (NAD'27) ESTABLISHED BY DGPS(SUBMETER MAPPING GRADE).
6. ORIGINAL PLAT DATED 10/21/09 REVISED 01/04/10 TO EXTEND HORIZONTAL LEG & CHANGE BOTTOM HOLE COORDINATES, ETC. PLAT REVISED 10/04/10 TO ROTATE & SHORTEN HORIZONTAL LEG, CHANGE TOP & BOTTOM HOLE COORDINATES & ADD UTM COORDINATES, ETC.



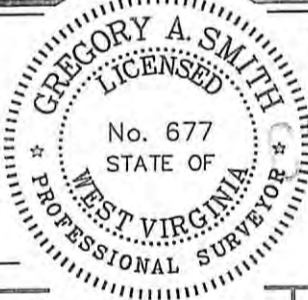
REFERENCES



BOTTOM HOLE
WELL NO. WV 512838
STATE PLANE COORDINATES
SOUTH ZONE (NAD'27)
N. 270,325
E. 1,734,209
LAT=(N) 37.73878
LONG=(W) 81.91914
UTM (NAD'83)
N. 4,177,242
E. 419,029

I THE UNDERSIGNED, HEREBY CERTIFY THAT THIS PLAT IS CORRECT TO THE BEST OF MY KNOWLEDGE AND BELIEF AND SHOWS ALL THE INFORMATION REQUIRED BY LAW AND THE REGULATIONS ISSUED AND PRESCRIBED BY THE DIVISION OF ENVIRONMENTAL PROTECTION.

P.S. 677
Gregory A. Smith



(+) DENOTES LOCATION OF WELL ON UNITED STATES TOPOGRAPHIC MAPS.
DATE OCTOBER 07, 20 10
OPERATORS WELL NO. WV 512838
API WELL NO. 47-045-02351H
STATE COUNTY PERMIT

MINIMUM DEGREE OF ACCURACY 1 / 2500 FILE NO. 4140P512838R2 (283-65)
PROVEN SOURCE OF ELEVATION DGPS (SUBMETER MAPPING GRADE) SCALE 1" = 2000'

STATE OF WEST VIRGINIA
DIVISION OF ENVIRONMENTAL PROTECTION
OFFICE OF OIL AND GAS

WELL TYPE: OIL GAS LIQUID INJECTION WASTE DISPOSAL IF "GAS" PRODUCTION STORAGE DEEP SHALLOW

LOCATION: ELEVATION 888' WATERSHED RICH CREEK
DISTRICT TRIADELPHIA COUNTY LOGAN QUADRANGLE MAN 7.5'
SURFACE OWNER DB LAND, LLC ACREAGE 494.44±
ROYALTY OWNER PARDEE MINERALS (943.04 AC.±) / COLE & CRANE REAL ESTATE TRUST (12,096.65 AC.±) / PARDEE MINERALS (1,257.061 AC.±)
PROPOSED WORK: LEASE NO. 080596 / 080565 / 901654
DRILL CONVERT DRILL DEEPER REDRILL FRACTURE OR STIMULATE PLUG OFF OLD
FORMATION PERFORATE NEW FORMATION PLUG AND ABANDON CLEAN OUT AND REPLUG OTHER
PHYSICAL CHANGE IN WELL (SPECIFY) _____ TARGET FORMATION LOWER HURON
ESTIMATED DEPTH 4,370' (TOTAL VERTICAL DEPTH)

WELL OPERATOR EQT PRODUCTION COMPANY DESIGNATED AGENT REX C. RAY
ADDRESS 1710 PENNSYLVANIA AVENUE ADDRESS 1710 PENNSYLVANIA AVENUE
CHARLESTON, WV 25302 CHARLESTON, WV 25302

01/04/2013