

# COLE AND CRANE REAL ESTATE TRUST LEASE

## 13,292.15 ACRES ±

### WELL NO. WV 512108

**BOTTOM HOLE**  
WELL NO. WV 512108  
STATE PLANE COORDINATES  
(SOUTH ZONE)

N. 274,998  
E. 1,687,061

LAT=(N) 37.74856  
LONG=(W) 82.08234

BOTTOM HOLE  
WELL NO.  
WV 512108

COLE AND CRANE  
REAL ESTATE TRUST  
19,801.944 ACRES ±  
(SURFACE)

Cancelled

COLE AND CRANE  
REAL ESTATE TRUST  
P/O 2,686.24 ACRES ±

**EXISTING WELL 47-045-1535**  
STATE PLANE COORDINATES  
(SOUTH ZONE)

N. 270,847  
E. 1,689,618

LAT=(N) 37.73889  
LONG=(W) 82.07335

**WELL NO. WV 512108**  
STATE PLANE COORDINATES  
(SOUTH ZONE)

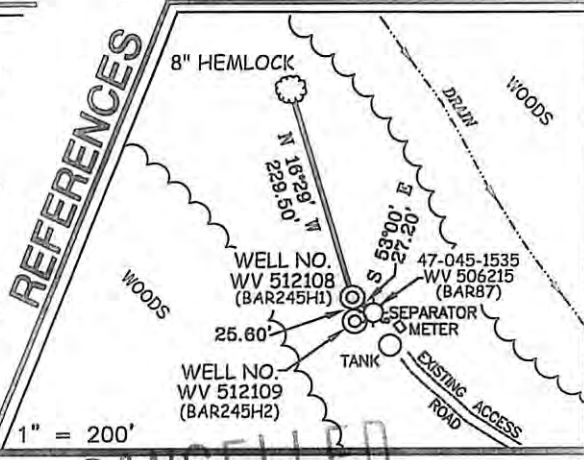
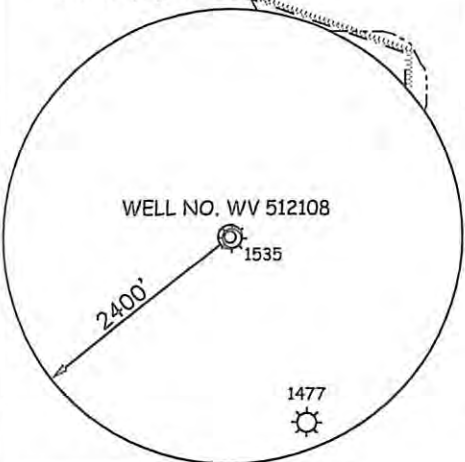
N. 270,863  
E. 1,689,596

LAT=(N) 37.73894  
LONG=(W) 82.07343

UTM NAD83  
N4177404.24  
E405434.53

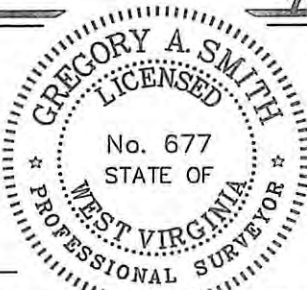
#### NOTES ON SURVEY

1. TIES TO WELLS AND CORNERS ARE BASED ON GRID NORTH FOR THE WV STATE PLANE COORDINATE SYSTEM SOUTH ZONE NAD '27.
2. TIES TO REFERENCES ARE BASED ON MAGNETIC NORTH 12/03/09.
3. LEASE BOUNDARY SHOWN HEREON TAKEN FROM A MAP SHOWING "PROPERTY OF COLE AND CRANE REAL ESTATE TRUST" DATED JANUARY 1925 BY W.C. McCALL, ENGINEER.
4. SURFACE OWNER AND ADJOINER INFORMATION TAKEN FROM THE ASSESSOR AND COUNTY CLERK RECORDS OF LOGAN COUNTY IN JUNE, 2009.
5. WELL LAT./LONG. (NAD'27) ESTABLISHED BY DGPS(SUBMETER MAPPING GRADE).



I THE UNDERSIGNED, HEREBY CERTIFY THAT THIS PLAT IS CORRECT TO THE BEST OF MY KNOWLEDGE AND BELIEF AND SHOWS ALL THE INFORMATION REQUIRED BY LAW AND THE REGULATIONS ISSUED AND PRESCRIBED BY THE DIVISION OF ENVIRONMENTAL PROTECTION.

P.S. 677 *Gregory A. Smith*



(+) DENOTES LOCATION OF WELL ON UNITED STATES TOPOGRAPHIC MAPS.

DATE APRIL 02, 20 10

OPERATORS WELL NO. WV 512108

API WELL NO. 47 - 045 - 02360

STATE COUNTY PERMIT

MINIMUM DEGREE OF ACCURACY 1 / 2500 FILE NO. 3796P512108 (289-46)

PROVEN SOURCE OF ELEVATION DGPS (SUBMETER MAPPING GRADE) SCALE 1" = 2000'

STATE OF WEST VIRGINIA  
DIVISION OF ENVIRONMENTAL PROTECTION  
OFFICE OF OIL AND GAS

WELL TYPE: OIL  GAS  LIQUID INJECTION  WASTE DISPOSAL  IF "GAS" PRODUCTION  STORAGE  DEEP  SHALLOW

LOCATION: ELEVATION 1,226' WATERSHED TRIBUTARY OF PINE CREEK

DISTRICT ISLAND CREEK COUNTY LOGAN QUADRANGLE BARNABUS 7.5'

SURFACE OWNER COLE & CRANE REAL ESTATE TRUST ACREAGE 19,801.944 ±

ROYALTY OWNER COLE & CRANE REAL ESTATE TRUST LEASE ACREAGE 13,292.15 ±

PROPOSED WORK: LEASE NO. 080574

DRILL  CONVERT  DRILL DEEPER  REDRILL  FRACTURE OR STIMULATE  PLUG OFF OLD FORMATION  PERFORATE NEW FORMATION  PLUG AND ABANDON  CLEAN OUT AND REPLUG  OTHER

PHYSICAL CHANGE IN WELL (SPECIFY) \_\_\_\_\_ TARGET FORMATION LOWER HURON

ESTIMATED DEPTH 4,730' (TOTAL VERTICAL DEPTH)

WELL OPERATOR EQT PRODUCTION COMPANY DESIGNATED AGENT REX C. RAY

ADDRESS 1710 PENNSYLVANIA AVE ADDRESS 1710 PENNSYLVANIA AVE

CHARLESTON, WV 25302 CHARLESTON, WV 25302