

39°37'30"

Latitude

34s
50w

80°07'30"

Longitude

Topo Location

7.5' Loc. _____ 15' Loc. _____
_____ (calc.) _____

Company TI Eddy & Co

Farm ME Petty #1

15' Quad _____
(sec.)

7.5' Quad Grant Town

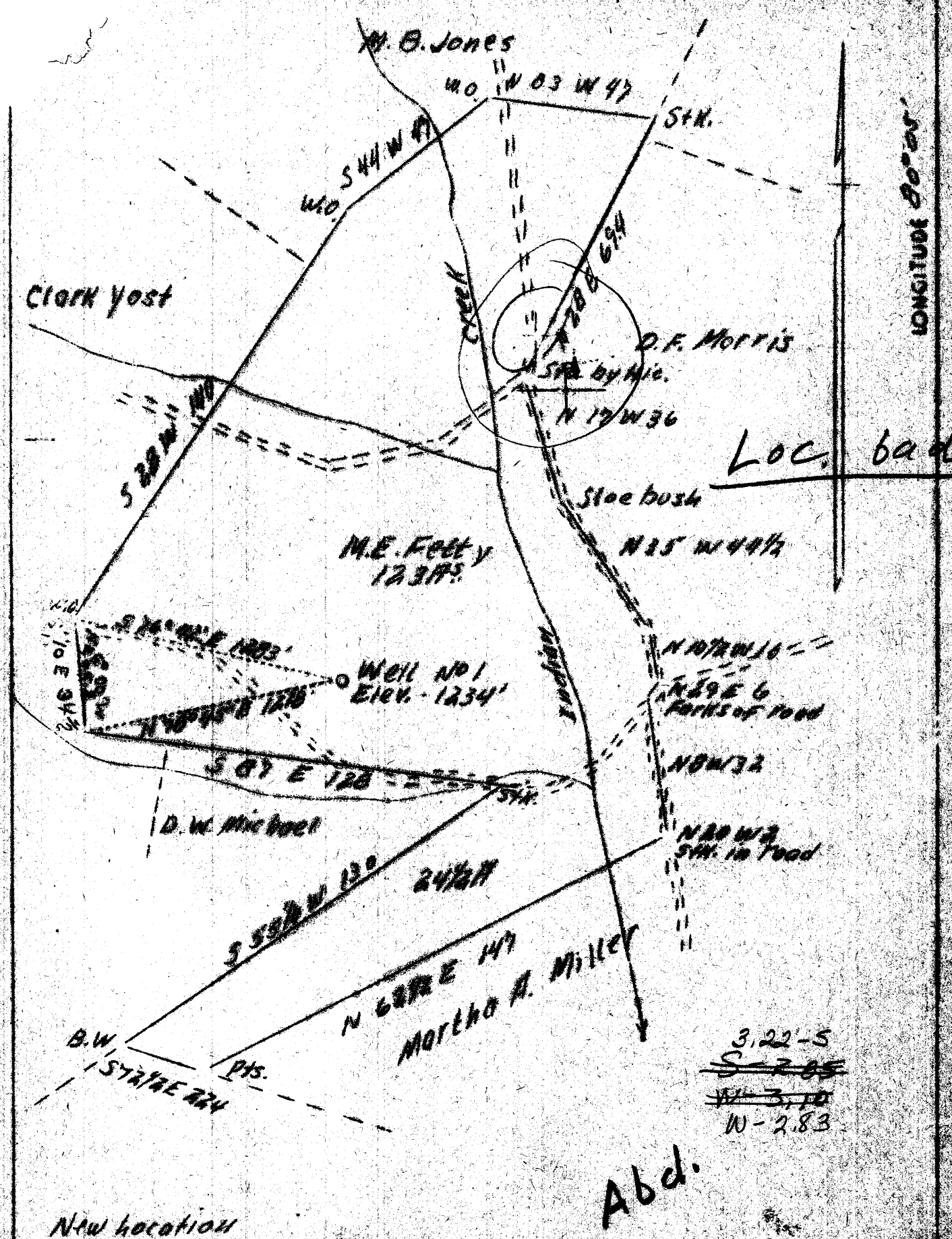
District Clay

WELL LOCATION PLAT

County Obi Permit 112

LATITUDE 39° 40'

LONGITUDE 80° 05'



New location

Abd.

Company	J.I. Eddy & Co.
Address	Bravo, Pa.
Farm	M.E. Petty
Tract	1
Acres	147
Well (Farm) No.	1
El. (S.L.)	1234
Quadrangle	Blacksville
County	Monongalia
District	Clay
Eng.	A.L. Headley
Date	7/6/39
Scale	1" = 600'

STATE OF WEST VIRGINIA
 Department of Mines,
 OIL AND GAS DIVISION
 Charleston

WELL LOCATION MAP

File No. MEU-112

x Denotes location of well on U.S. Topographic Maps, scale 1 to 50,000, latitude and longitude lines being represented by border lines as shown.

o Denotes wellhead spots on better than of original records.

VIRGINIA DEPARTMENT OF MINES

OIL & GAS DIVISION

WELL RECORD

Permit No. Mon-112

Gas Well

Blacksville Quad.

CASING & TUBING

Company	J. I. Eddy & Company	10	586-8	586-8
Address	Brave, Pa.	8-1/4	1471-8	1471-8
Farm	M. E. Petty ACRES 150	6-5/8	1825-7	1825-7
Location	Indian Creek			
Well No.	1 ELEV. 1223			
District	Clay - Monongalia County	COAL AT:		
Surface	M. E. Petty	212		
Mineral	Coal By Cochran Coal Co.	484		
Address	Dawson, Pa.	548		
Commenced	Sept. 28, 1939	568		
Completed	Nov. 10, 1939	643		
Open Flow	30/10ths Merc. in 2"	1281		
Volume	964,000 c.f.	1406		
Rock Pressure	305 lbs. 24 hrs.			
Fresh Water	68 and 1550			

Formation Color ^H Top Base Result					Formation Color ^H Top Base Result				
Clay	yel	s	0	15	Shale	drk	s	1050	1095
Clay	gr	s	15	35	Sand	gr	h	1095	1125
Shale	drk	s	35	85	Slate	gr	s	1125	1160
Lime	gr	h	85	120	Sand Gas Sand	wh	h	1160	1200
Slate	gr	s	120	160	Slate	gr	s	1200	1206
Sand	gr	h	160	195	Lime	gr	h	1205	1225
Slate	gr	s	195	212	Shale	drk	s	1225	1270
Coal	blk	s	212	218	Slate	gr	s	1270	1279
Lime	gr	h	218	240	Lime	gr	h	1279	1281
Slate	gr	s	240	273	Coal	blk	s	1281	1284
Lime	gr	h	273	290	Lime	gr	h	1284	1350
Slate	gr	s	290	315	Slate	gr	s	1350	1355
Lime	gr	h	315	390	Sand	gr	h	1355	1365
Slate	gr	s	390	404	Lime	gr	h	1365	1375
Lime	gr	h	404	451	Sand	gr	h	1375	1406
Slate	gr	s	451	463	Coal	blk	s	1406	1409
Lime	gr	h	463	478	Sand	gr	h	1409	1466
Shale	drk	s	478	484	Slate	gr	s	1466	1495
Coal	blk	s	484	492	Sand Salt	gr	h	1495	1640
Shale	drk	s	492	506	Slate	gr	s	1640	1720
Lime	gr	h	506	548	Lime	gr	h	1720	1735
Coal	blk	s	548	551	Red Rock	red	s	1735	1745
Lime	gr	h	551	562	Slate	gr	s	1745	1793
Shale	drk	s	562	568	Lime	gr	h	1793	1806
Coal	blk	s	568	575	Shale	drk	s	1806	1823
Shale	drk	s	575	585	Lime	gr	h	1823	1891
Lime	gr	h	585	594	Sand	gr	h	1891	2040
Shale	drk	s	594	604					
Sand	gr	h	604	618	Slate	gr	s	2040	2125
Slate	gr	s	618	630	Sand - 2000	gr	h	2125	2170
Lime	gr	h	630	640	Slate	gr	s	2170	2345
Coal	blk	s	640	643	Sand - Berca	gr	h	2360	2405
Lime	gr	h	643	680	Slate	gr	s	2405	2410
Sand	gr	h	680	715	Sand Gully	gr	h	2410	2447
Slate	gr	s	715	740					
Lime	gr	h	740	755					
Red Rock	red	s	755	770					
Slate	gr	s	770	800					
Lime	gr	h	800	820					
Slate	gr	s	820	830					
Red Rock	red	s	830	843					
Slate & Shell	s gr	s	843	955					
Sand	gr	h	955	985					
Shale	drk	s	985	995					
Lime	gr	s	995	1005					
Red Rock	red	s	1005	1015					
Slate & Shell	s gr	s	1015	1030					
Slate	gr	s	1030	1050					
					Total Depth			2447	

Dunkard

FW 1550

Gas 1893
6/10 W
in 1"

Gas 2439
30/10 M
in 2"

FW 68

Physh?

Dunk?

WEST VIRGINIA DEPARTMENT OF MINES
OIL & GAS DIVISION
W E L L R E C O R D

Permit No. Mon-112
Blacksville Quad.

Gas Well

Company J. I. Eddy & Co.
Address Brave, Pa.
Farm W. E. Potty ACRES 150
Location Indian Creek
Well No. 1 ELEV. 1223
District Clay - Monongalia County
Surface W. E. Potty
Mineral Cochran Coal Co., Dawson, Pa.
Drilling Depth
Commenced Feb. 26, 1940
Completed Mar. 11, 1940
Open Flow 2/10ths Water in 2 inch
Volume 78,000 c.f.
Rock Pressure -
Water -

CASING & TUBING
10 586-8
8-1/4 1471-8
6-5/8 1825-7

Started Drilling at		2447	
Sand - <i>Green</i>	wh	h	2470
Slate	dk	s	2470 2485
Sand	wh	h	2485 2515
Red Rock	rd	s	2515 2528
Sand - <i>50'</i>	wh	h	2528 2570
Slate	dk	s	2570 2590
Sand	wh	h	2590 2607
Red Rock	rd	s	2607 2618
Sand - <i>20'</i>	wh	h	2618 2675
Slate	dk	s	2675 2686
Sand - <i>6'</i>	wh	h	2686 2705
Red Rock	rd	s	2705 2728
Sand	wh	h	2728 2777 - <i>part</i>
Slate	dk	s	2777 2800
Sand - <i>4'</i>	wh	h	2800 2830
Slate	dk	s	2830 2860
Sand - <i>5'</i>	wh	h	2860 2895
Slate & Shells	dk	s	2895 2920
Sand - <i>Bay</i>	wh	h	2920 2992 Gas 2935 - small
Slate & Shells	dk	s	2992 3100
Total Depth			3100