

6101002P

WW-7  
8-30-06



West Virginia Department of Environmental Protection  
Office of Oil and Gas  
**WELL LOCATION FORM: GPS**

API: 47-061-01002 WELL NO.: 29  
FARM NAME: J. Wildman  
RESPONSIBLE PARTY NAME: NNE Resources LLC  
COUNTY: Monongalia DISTRICT: Clay  
QUADRANGLE: Osage 7.5'  
SURFACE OWNER: Howard S. Eddy, Cheryl Gay Dean, Branson R. Matheny  
ROYALTY OWNER: Trio Petroleum Corporation and Waco Oil and Gas Company, Inc., et al  
UTM GPS NORTHING: 4388986.9  
UTM GPS EASTING: 575097.0 GPS ELEVATION: 1495'

The Responsible Party named above has chosen to submit GPS coordinates in lieu of preparing a new well location plat for a plugging permit or assigned API number on the above well. The Office of Oil and Gas will not accept GPS coordinates that do not meet the following requirements:

- Datum: NAD 1983, Zone: 17 North, Coordinate Units: meters, Altitude: height above mean sea level (MSL) – meters.
- Accuracy to Datum – 3.05 meters
- Data Collection Method:  
Survey grade GPS \_\_\_\_ : Post Processed Differential \_\_\_\_  
Real-Time Differential \_\_\_\_  
Mapping Grade GPS X : Post Processed Differential \_\_\_\_  
Real-Time Differential X

4. **Letter size copy of the topography map showing the well location.**

I the undersigned, hereby certify this data is correct to the best of my knowledge and belief and shows all the information required by law and the regulations issued and prescribed by the Office of Oil and Gas.

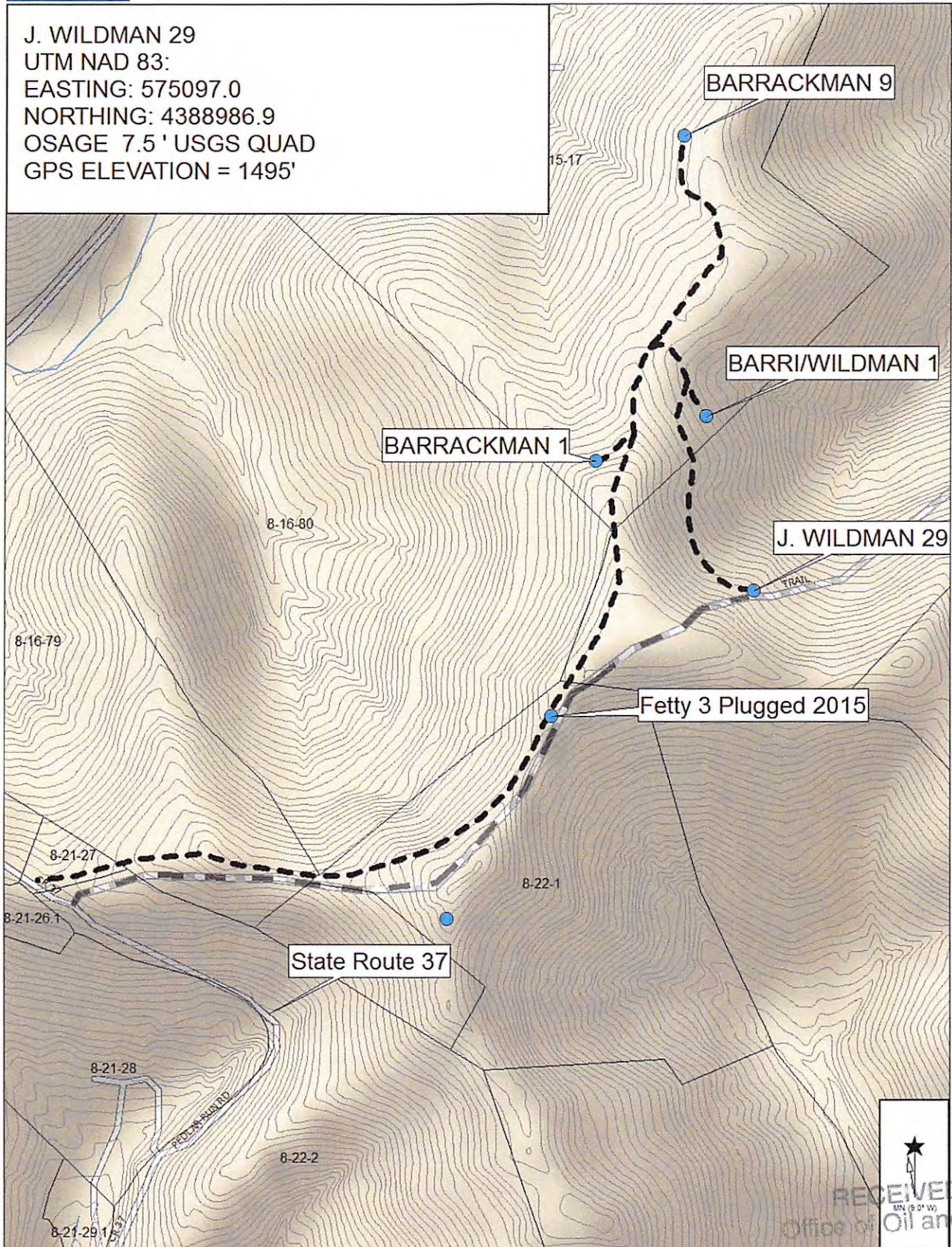
[Signature]  
Signature

General Manager - Operations  
Title

6/8/2016  
Date

RECEIVED  
Office of Oil and Gas  
JUN 10 2016  
WV Department of Environmental Protection  
06/24/2016

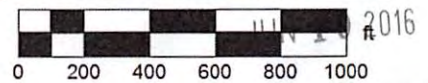
J. WILDMAN 29  
 UTM NAD 83:  
 EASTING: 575097.0  
 NORTHING: 4388986.9  
 OSAGE 7.5' USGS QUAD  
 GPS ELEVATION = 1495'



Data use subject to license.

© DeLorme. XMap® 7.

www.delorme.com



Data Zoom 15-2

RECEIVED  
 Office of Oil and Gas  
 Department of Environmental Protection  
 06/24/2016