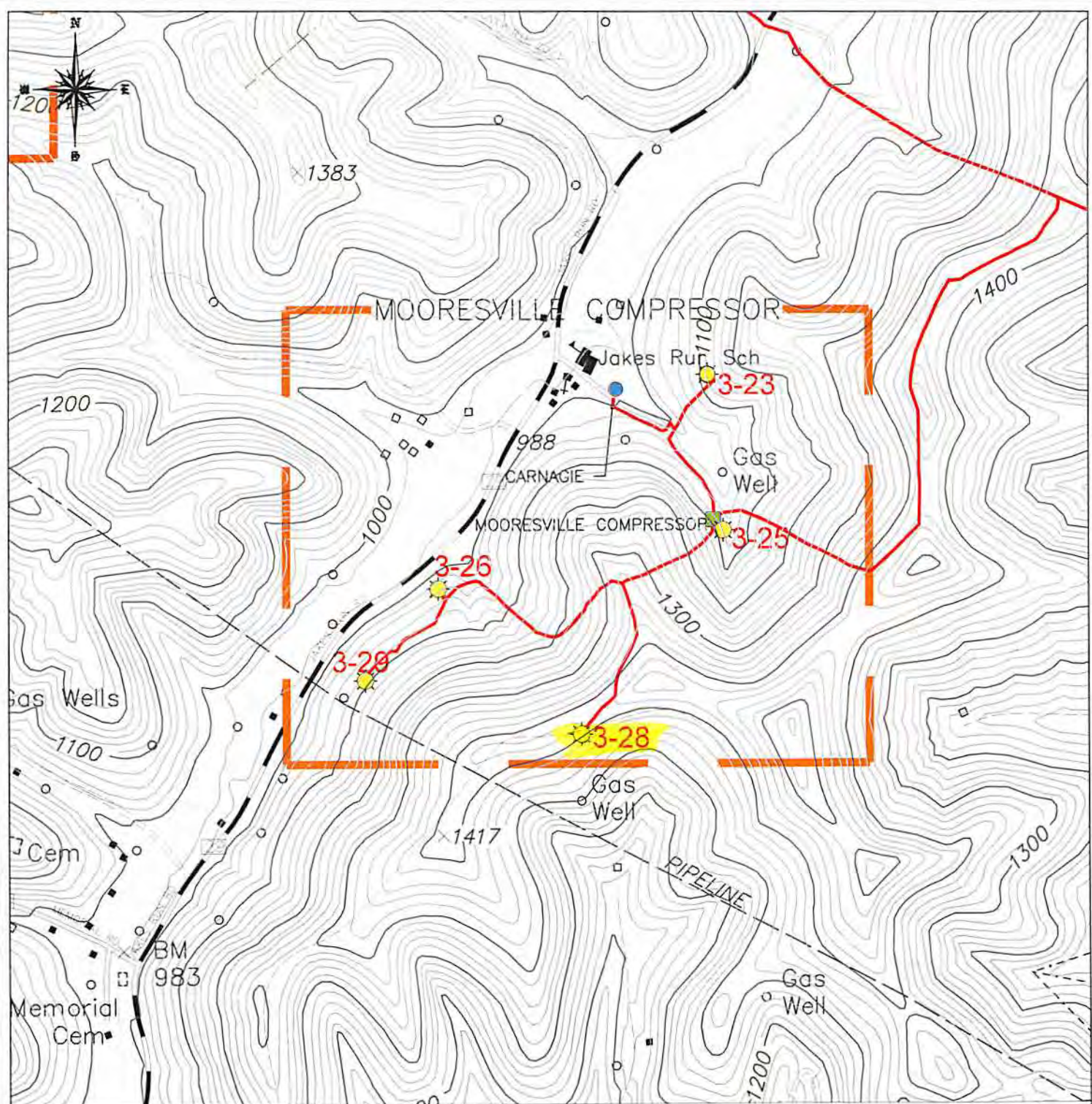




610134P



**LEGEND**


GAS WELL


UTM ZONE 17 S


EASTING: 571922.75

NORTHING: 4,391,393.78


ELEVATION: 419 M

SURVEYED CBM WELL LOCATION 

NON-SURVEYED CBM WELL LOCATION 

GAS LINE 

0FT 1000FT 2000FT



**LOCATION MAP**

NOUMENON CORPORATION

2461 MASON DIXON HIGHWAY

CORE, WV 26541

**API WELL NO. - 47-061-1341C**

**OPERATOR'S WELL NO. - 3-28**

CLAY DISTRICT - MONONGALIA COUNTY, WV

7.5 MINUTE SERIES - 20' CONTOUR INTERVAL

BLACKSVILLE, WV TOPO QUAD

Received

Office of Oil & Gas

29 2014