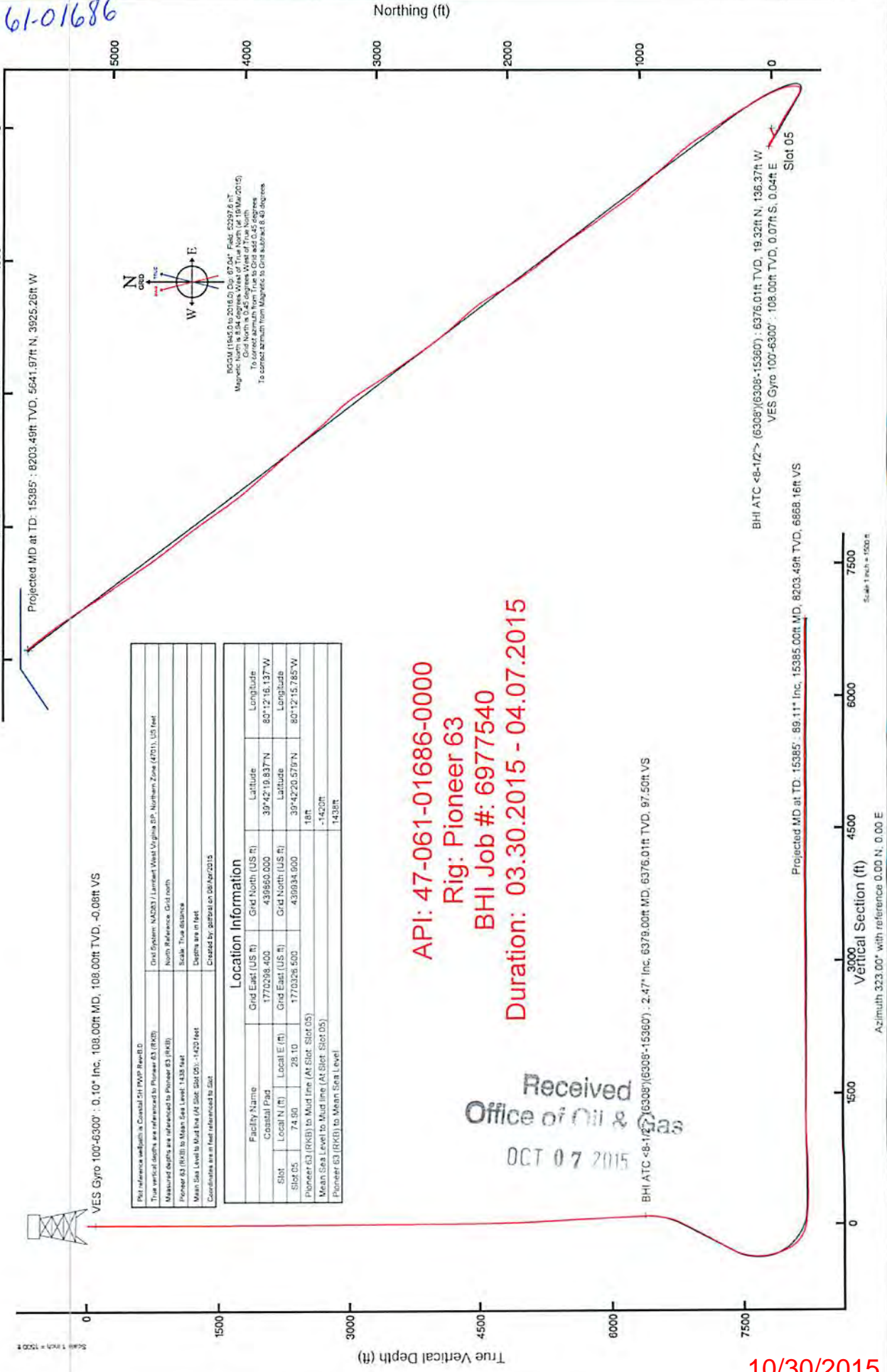




NORTHEAST NATURAL ENERGY, LLC

Location: Monongalia County, WV
 Field: Monongalia
 Facility: Coastal Pad
 Slot: Slot 05
 Well: Coastal 5H PWB
 Wellbore: Coastal 5H PWB



61-01686

Projected MD at TD: 15385'; 8203.49ft TVD, 5641.97ft N, 3925.28ft W

VES Gyro 100-6300' : 0.10" Inc, 108.00ft MD, 108.00ft TVD, -0.08ft VS

Location Information	
Facility Name	Coastal Pad
Local N (ft)	74.90
Local E (ft)	28.10
Slot	Slot 05
Mean Sea Level to Mud line (At Slot: Slot 05)	1420ft
Mean Sea Level to Mud line (At Slot: Slot 05)	-1420ft
Mean Sea Level to Mud line (At Slot: Slot 05)	1438ft

Location Information	
Grid East (US Ft)	1770298.400
Grid North (US Ft)	439950.000
Local E (ft)	28.10
Local N (ft)	74.90
Slot	Slot 05
Mean Sea Level to Mud line (At Slot: Slot 05)	1420ft
Mean Sea Level to Mud line (At Slot: Slot 05)	-1420ft
Mean Sea Level to Mud line (At Slot: Slot 05)	1438ft

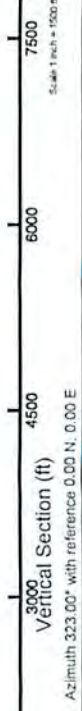
API: 47-061-01686-0000
 Rig: Pioneer 63
 BHI Job #: 6977540
 Duration: 03.30.2015 - 04.07.2015

Received
 Office of Oil & Gas
 OCT 07 2015

BHI ATC -8-1/2" : 6308'(6308'-15360') : 2.47" Inc, 6378.00ft MD, 6376.01ft TVD, 97.50ft VS

BHI ATC -8-1/2" : 6308'(6308'-15360') : 6376.01ft TVD, 19.32ft N, 136.37ft W
 VES Gyro 100-6300' : 108.00ft TVD, 0.07ft S, 0.04ft E

Projected MD at TD: 15385'; 89.11" Inc, 15385.00ft MD, 8203.49ft TVD, 6885.16ft VS



10/30/2015

61-01686

ACTUAL WELLPATH REPORT (CSV version)

Prepared by Baker Hughes
Software System: WellArchitect® 4.0.1

REFERENCE WELLPATH IDENTIFICATION

Operator NORTHEAST NATURAL ENERGY, LLC
Area Monongalia County, WV
Field Monongalia
Facility Coastal Pad
Slot Slot 05
Well Coastal 5H
Wellbore Coastal 5H AWB
Wellpath Coastal 5H AWP Proj: 15385'
Sidetrack (none)

REPORT SETUP INFORMATION

Projection System NAD83 / Lambert West Virginia SP, Northern Zone (4701), US feet
Grid
North Reference
Scale 0.999942
Convergence at slot 0.45° West
Software System WellArchitect® 4.0.1
User Gottfrral
Report Generated 07/Apr/2015 at 16:53
DataBase/Source file WANorthEast/ev6768.xml

Received
Office of Oil & Gas
OCT 07 2015

WELLPATH LOCATION

Local North Local East Easting Northing Latitude Longitude
[ft] [ft] [US ft] [US ft]
Slot Location 74.9 28.1 1770327 439934.9 39°42'20.5 80°12'15.785°W
Facility Reference Pt 1770298 439860 39°42'19.4 80°12'16.137°W
Field Reference Pt 1777686 440640.7 39°42'28.1 80°10'41.690°W

WELLPATH DATUM

Calculation method Minimum curvature
Horizontal Reference Point Slot
Vertical Reference Point Pioneer 63 (RKB)
MD Reference Point Pioneer 63 (RKB)
Field Vertical Reference Mean Sea Level
Pioneer 63 (RKB) to Facility Vertical Datum 18.00ft
Pioneer 63 (RKB) to Mean Sea Level 1438.00ft
Pioneer 63 (RKB) to Mud Line at Slot (Slot 05) 18.00ft
Section Origin N 0.00, E 0.00 ft
Section Azimuth 323.00°

WELLPATH DATA * = interpolated/extrapolated station

	MD	Inclination	Azimuth	TVD	Vert Sect	North	East	Grid East	Grid North	Latitude	Longitude	Closure Di	Closure Di DLS
ft	[ft]	[°]	[°]	[ft]	[ft]	[N]	[N]	[US ft]	[US ft]	[°]	[°/100ft]	[ft]	[ft/100ft]
0	0	0	153.03	0	0	0	0	1770326.5	439934.9	39°42'20.579°N	80°12'15.785°W	0	0
18	0	0	153.03	18	0	0	0	1770326.5	439934.9	39°42'20.579°N	80°12'15.785°W	0	0
108	0.1	0.1	153.03	108	-0.08	-0.07	0.04	1770326.54	439934.83	39°42'20.579°N	80°12'15.785°W	0.08	153.03
208	0.19	0.19	206.32	208	-0.24	-0.3	0	1770326.5	439934.6	39°42'20.576°N	80°12'15.785°W	0.3	179.675
308	0.24	0.24	270.21	308	-0.19	-0.44	-0.28	1770326.22	439934.46	39°42'20.575°N	80°12'15.789°W	0.53	212.34
408	0.21	0.21	49.88	408	-0.05	-0.33	-0.35	1770326.15	439934.57	39°42'20.576°N	80°12'15.789°W	0.48	227.134
508	0.16	0.16	55.73	508	-0.05	-0.13	-0.1	1770326.4	439934.77	39°42'20.578°N	80°12'15.786°W	0.16	216.454
608	0.16	0.16	324.23	608	0.26	0.2	-0.16	1770326.04	439935.1	39°42'20.581°N	80°12'15.787°W	0.26	321.44
708	0.22	0.22	122.69	708	0.77	0.61	-0.46	1770326.04	439935.51	39°42'20.585°N	80°12'15.791°W	0.77	322.894
808	0.24	0.24	293.65	808	1.14	0.85	-0.77	1770325.73	439935.75	39°42'20.588°N	80°12'15.795°W	1.15	317.743
908	0.25	0.25	290.58	907.99	1.51	1.01	-1.17	1770325.33	439935.91	39°42'20.589°N	80°12'15.800°W	1.54	310.857
1008	0.24	0.24	296.57	1007.99	1.88	1.18	-1.56	1770324.94	439936.08	39°42'20.591°N	80°12'15.805°W	1.96	307.124
1108	0.13	0.13	83.75	1107.99	2.01	1.29	-1.63	1770324.87	439936.19	39°42'20.592°N	80°12'15.806°W	2.08	308.214
1208	0.05	0.05	143.67	1207.99	1.91	1.26	-1.5	1770325	439936.16	39°42'20.592°N	80°12'15.804°W	1.96	310.2
1308	0.19	0.19	152.57	1307.99	1.7	1.08	-1.39	1770325.11	439935.98	39°42'20.590°N	80°12'15.803°W	1.76	307.819
1408	0.15	0.15	225.41	1407.99	1.52	0.84	-1.41	1770325.09	439935.74	39°42'20.587°N	80°12'15.803°W	1.64	300.852
1508	0.15	0.15	264.7	1507.99	1.57	0.74	-1.63	1770324.87	439935.64	39°42'20.586°N	80°12'15.806°W	1.79	294.319
1608	0.16	0.16	281.96	1607.99	1.88	0.79	-2.07	1770324.43	439935.69	39°42'20.587°N	80°12'15.812°W	2.22	290.907
1708	0.83	0.83	270.59	1707.99	2.56	0.86	-3.1	1770323.4	439935.76	39°42'20.588°N	80°12'15.825°W	3.22	285.556
1808	0.56	0.56	265.33	1807.99	3.26	0.83	-4.31	1770322.19	439935.73	39°42'20.587°N	80°12'15.840°W	4.39	280.908
1908	0.47	0.47	268.83	1907.97	3.76	0.78	-5.21	1770321.29	439935.68	39°42'20.587°N	80°12'15.852°W	5.27	278.547
2008	0.16	0.16	271.07	2007.97	4.09	0.78	-5.76	1770320.74	439935.68	39°42'20.587°N	80°12'15.859°W	5.81	277.686
2108	0.1	0.1	349.29	2107.97	4.25	0.87	-5.92	1770320.58	439935.77	39°42'20.587°N	80°12'15.861°W	5.98	278.325
2208	0.65	0.65	250.12	2207.97	4.5	0.76	-6.47	1770320.03	439935.66	39°42'20.586°N	80°12'15.868°W	6.51	276.692
2308	1.28	1.28	257.01	2307.96	5.12	0.31	-8.09	1770318.41	439935.21	39°42'20.582°N	80°12'15.889°W	8.09	272.228
2408	1.76	1.76	256.3	2407.92	6.18	-0.3	-10.67	1770315.83	439934.6	39°42'20.575°N	80°12'15.921°W	10.67	268.389
2508	1.95	1.95	245.88	2507.87	7.17	-1.36	-13.71	1770312.79	439933.54	39°42'20.565°N	80°12'15.960°W	13.70	264.34
2608	1.92	1.92	243.91	2607.81	7.86	-2.79	-16.77	1770309.73	439932.11	39°42'20.550°N	80°12'15.999°W	17	260.551
2708	2.32	2.32	238.71	2707.74	8.38	-4.58	-20	1770306.5	439930.32	39°42'20.532°N	80°12'16.040°W	20.52	257.107
2808	2.41	2.41	241.83	2807.66	8.91	-6.62	-23.59	1770302.91	439928.28	39°42'20.512°N	80°12'16.086°W	24.5	254.317
2908	2.27	2.27	244.07	2907.57	9.61	-8.48	-27.22	1770299.28	439926.42	39°42'20.493°N	80°12'16.132°W	28.51	252.695
3008	1.95	1.95	248.14	3007.51	10.43	-9.98	-30.58	1770295.92	439924.92	39°42'20.478°N	80°12'16.175°W	32.17	251.925
3108	1.75	1.75	242.23	3107.45	11.12	-11.33	-33.51	1770292.99	439923.57	39°42'20.465°N	80°12'16.213°W	35.37	251.327
3208	1.57	1.57	243.86	3207.41	11.63	-12.64	-36.09	1770290.41	439922.26	39°42'20.452°N	80°12'16.246°W	38.24	250.698
3308	1.43	1.43	243.12	3307.38	12.1	-13.81	-38.44	1770288.07	439921.09	39°42'20.440°N	80°12'16.275°W	40.84	250.239
3408	1.3	1.3	246.52	3407.35	12.59	-14.82	-40.59	1770285.91	439920.08	39°42'20.430°N	80°12'16.303°W	43.21	249.936
3508	1.15	1.15	248.69	3507.33	13.12	-15.64	-42.56	1770283.94	439919.26	39°42'20.421°N	80°12'16.328°W	45.35	249.823
3608	1.02	1.02	253.91	3607.31	13.71	-16.25	-44.35	1770282.15	439918.65	39°42'20.415°N	80°12'16.351°W	47.24	249.876
3708	1.02	1.02	258.46	3707.29	14.41	-16.68	-46.08	1770280.42	439918.22	39°42'20.411°N	80°12'16.373°W	49.01	250.105
3808	0.78	0.78	248.9	3807.28	14.98	-17.1	-47.59	1770278.91	439917.8	39°42'20.407°N	80°12'16.392°W	50.57	250.235
3908	0.73	0.73	249.96	3907.27	15.36	-17.56	-48.82	1770277.68	439917.34	39°42'20.402°N	80°12'16.408°W	51.89	250.214
4008	0.8	0.8	255.89	4007.26	15.81	-17.95	-50.1	1770276.4	439916.95	39°42'20.398°N	80°12'16.424°W	53.22	250.285
4108	0.71	0.71	257.15	4107.25	16.34	-18.26	-51.38	1770275.12	439916.64	39°42'20.395°N	80°12'16.441°W	54.53	250.435
4208	0.79	0.79	261.79	4207.25	16.92	-18.5	-52.67	1770273.84	439916.4	39°42'20.392°N	80°12'16.457°W	55.82	250.648
4308	0.93	0.93	268.7	4307.23	17.73	-18.61	-54.16	1770272.34	439916.29	39°42'20.391°N	80°12'16.476°W	57.27	251.033
4408	1.15	1.15	271.45	4407.22	18.83	-18.61	-55.97	1770270.53	439916.29	39°42'20.391°N	80°12'16.499°W	58.99	251.613

61-01686

Received
Office of Oil & Gas

OCT 07 2015

4508	1.35	272.83	4507.19	20.2	-18.52	-58.15	1770268.35	439916.38	39°42'20.392"N	80°12'16.527"W	61.01	252.331	0.2
4608	1.39	275.63	4607.17	21.78	-18.35	-60.54	1770265.97	439916.56	39°42'20.393"N	80°12'16.558"W	61.26	253.141	0.08
4708	1.67	274.08	4707.13	23.56	-18.12	-63.2	1770263.31	439916.78	39°42'20.395"N	80°12'16.592"W	65.74	253.999	0.28
4808	2.06	279.56	4807.08	25.82	-17.72	-66.42	1770260.65	439917.18	39°42'20.399"N	80°12'16.633"W	68.75	255.062	0.43
4908	2.27	281.06	4907	28.6	-17.04	-70.14	1770256.36	439917.86	39°42'20.405"N	80°12'16.681"W	72.18	256.343	0.22
5008	2.76	285.11	5006.91	31.97	-16.03	-74.41	1770252.21	439918.87	39°42'20.415"N	80°12'16.735"W	76.12	257.839	0.52
5108	3.12	288.36	5106.78	36.11	-14.55	-79.31	1770247.19	439920.35	39°42'20.429"N	80°12'16.798"W	80.64	259.605	0.4
5208	3.29	290.65	5206.62	40.78	-12.68	-84.58	1770241.92	439922.22	39°42'20.447"N	80°12'16.866"W	85.53	261.474	0.21
5308	3.54	297.3	5306.44	45.98	-10.25	-90.01	1770236.49	439924.65	39°42'20.471"N	80°12'16.936"W	90.59	263.502	0.47
5408	3.44	298.35	5406.26	51.49	-7.41	-95.39	1770231.11	439927.49	39°42'20.499"N	80°12'17.005"W	95.68	265.557	0.12
5508	3.18	299.15	5506.09	56.75	-4.64	-100.46	1770226.05	439930.26	39°42'20.526"N	80°12'17.070"W	100.56	267.357	0.26
5608	3.15	303.97	5605.94	61.89	-1.75	-105.16	1770221.35	439933.15	39°42'20.554"N	80°12'17.130"W	105.17	269.046	0.26
5708	3.01	304.22	5705.79	66.97	1.26	-109.61	1770216.69	439936.16	39°42'20.583"N	80°12'17.188"W	109.62	270.659	0.14
5808	2.96	304.17	5805.66	71.9	4.19	-113.92	1770212.59	439939.09	39°42'20.612"N	80°12'17.243"W	113.99	272.105	0.05
5908	2.83	302.35	5905.53	76.65	6.96	-118.14	1770208.37	439941.86	39°42'20.639"N	80°12'17.297"W	118.34	273.371	0.16
6008	2.78	302.44	6005.41	81.24	9.58	-122.27	1770204.24	439944.48	39°42'20.664"N	80°12'17.350"W	122.64	274.48	0.05
6108	2.78	304.5	6105.29	85.81	12.26	-126.31	1770200.19	439947.15	39°42'20.691"N	80°12'17.402"W	126.91	275.542	0.1
6208	2.63	308.53	6205.18	90.33	15.06	-130.11	1770196.4	439949.96	39°42'20.718"N	80°12'17.451"W	130.98	276.602	0.24
6308	2.52	301.59	6305.08	94.59	17.64	-133.78	1770192.73	439952.54	39°42'20.743"N	80°12'17.498"W	134.93	277.511	0.33
6379	2.47	304.27	6376.01	97.5	19.32	-136.37	1770190.14	439954.22	39°42'20.760"N	80°12'17.532"W	137.73	278.063	0.18
6431	0.87	62.96	6428	98.49	20.13	-136.94	1770189.56	439955.03	39°42'20.768"N	80°12'17.539"W	138.42	278.362	5.74
6495	6.98	100.71	6491.82	95.53	19.63	-132.69	1770193.82	439954.53	39°42'20.763"N	80°12'17.485"W	134.13	278.414	9.87
6558	11.42	106.99	6554	87.65	17.09	-122.95	1770203.55	439951.99	39°42'20.739"N	80°12'17.360"W	124.14	277.914	7.22
6622	14.24	115.41	6616.4	75.54	11.86	-109.78	1770216.73	439946.76	39°42'20.688"N	80°12'17.191"W	110.42	276.166	5.28
6685	17.18	122.76	6677.04	59.94	3.5	-94.95	1770231.55	439938.4	39°42'20.606"N	80°12'17.000"W	95.02	272.11	5.63
6748	22.86	122.84	6736.21	39.7	-8.18	-76.83	1770249.67	439926.72	39°42'20.492"N	80°12'16.767"W	77.27	263.921	9.02
6812	29.51	121.83	6793.61	13.31	-23.25	-52.97	1770273.53	439911.65	39°42'20.345"N	80°12'16.460"W	57.85	246.298	10.41
6875	30.21	118.21	6848.25	-15.55	-38.93	-25.82	1770300.69	439895.97	39°42'20.193"N	80°12'16.111"W	46.71	213.55	3.07
6938	30.2	117.61	6902.7	-44.26	-53.77	2.19	1770328.69	439881.14	39°42'20.048"N	80°12'15.752"W	53.81	177.665	0.48
7002	30.23	118	6958.01	-73.4	-68.79	30.68	1770357.18	439866.11	39°42'19.902"N	80°12'15.386"W	75.32	155.963	0.31
7065	30.2	118.31	7012.45	-102.17	-83.75	58.63	1770385.13	439851.15	39°42'19.756"N	80°12'15.025"W	102.24	145.004	0.25
7128	30.2	119.89	7066.9	-131.14	-99.16	86.32	1770412.82	439835.74	39°42'19.606"N	80°12'14.671"W	131.47	138.96	1.26
7192	30.19	122.6	7122.22	-161.03	-115.85	113.84	1770440.33	439819.05	39°42'19.443"N	80°12'14.317"W	162.42	135.501	2.11
7255	30.2	124.04	7176.67	-190.86	-133.26	140.31	1770466.8	439801.65	39°42'19.273"N	80°12'13.976"W	193.51	133.523	1.15
7317	29.3	123.11	7230.5	-219.88	-150.27	165.94	1770492.43	439784.64	39°42'19.107"N	80°12'13.647"W	223.87	132.164	1.63
7380	29.12	121.15	7285.49	-248.6	-166.62	191.97	1770518.46	439768.29	39°42'18.947"N	80°12'13.312"W	254.2	130.957	1.54
7443	29.19	120.59	7340.51	-277.03	-182.37	218.32	1770544.8	439752.54	39°42'18.794"N	80°12'12.973"W	284.47	129.874	0.45
7506	29.19	120.86	7395.5	-305.47	-198.07	244.73	1770571.21	439736.84	39°42'18.641"N	80°12'12.634"W	314.84	128.985	0.21
7569	20.26	118.43	7452.67	-329.67	-211.17	267.56	1770594.04	439723.74	39°42'18.513"N	80°12'12.341"W	340.85	128.283	14.26
7633	15.08	108.82	7513.65	-346.65	-219.14	285.2	1770611.68	439715.77	39°42'18.436"N	80°12'12.114"W	359.66	127.538	9.26
7696	10.19	89.14	7575.13	-356.72	-221.7	298.54	1770625.02	439713.21	39°42'18.411"N	80°12'11.943"W	371.86	126.598	10.24
7759	9.1	67.45	7637.26	-361.26	-219.71	308.72	1770635.2	439715.21	39°42'18.432"N	80°12'11.813"W	378.91	125.439	5.98
7821	8.87	33.19	7698.54	-360.86	-213.82	315.87	1770642.35	439721.09	39°42'18.491"N	80°12'11.722"W	381.43	124.096	8.51
7885	12.55	10.34	7761.44	-354.47	-202.84	319.82	1770646.3	439732.07	39°42'18.599"N	80°12'11.673"W	378.72	122.385	8.68
7948	17.78	4.2	7822.23	-342.58	-186.5	321.75	1770648.23	439748.41	39°42'18.761"N	80°12'11.650"W	371.9	120.099	8.67
8012	22.55	357.95	7882.3	-325.16	-164.48	322.03	1770648.51	439770.43	39°42'18.979"N	80°12'11.648"W	361.6	117.056	8.17
8074	23.67	348.55	7939.34	-304.18	-140.39	319.13	1770645.61	439794.52	39°42'19.217"N	80°12'11.688"W	348.65	113.746	6.21
8137	29.16	346.19	7995.74	-278.64	-113.07	312.95	1770639.43	439821.83	39°42'19.486"N	80°12'11.770"W	332.75	109.865	8.87
8201	36.98	344	8049.34	-246.29	-79.37	303.91	1770630.39	439855.53	39°42'19.818"N	80°12'11.889"W	314.11	104.637	12.36
8264	45.38	337.64	8096.73	-206.82	-40.34	290.13	1770616.61	439894.57	39°42'20.203"N	80°12'12.069"W	292.92	97.915	14.88
8327	54.24	333.37	8137.36	-159.87	3.35	270.1	1770596.58	439938.25	39°42'20.633"N	80°12'12.330"W	270.12	89.29	14.98
8391	63.8	331.64	8170.26	-105.82	51.94	244.76	1770571.24	439986.84	39°42'21.112"N	80°12'12.659"W	250.21	78.019	15.12
8454	72.34	329.74	8193.77	-47.95	102.84	216.15	1770542.64	440037.73	39°42'21.612"N	80°12'13.030"W	239.37	64.557	13.84
8516	81.22	328.94	8207.94	11.97	154.7	185.4	1770511.89	440089.59	39°42'22.127"N	80°12'13.428"W	241.46	50.158	14.36
8580	86.7	329.07	8214.67	75.25	209.24	152.64	1770479.13	440144.12	39°42'22.659"N	80°12'13.853"W	258.99	36.11	8.58
8643	85.53	328.05	8218.94	137.8	262.86	119.85	1770446.34	440197.75	39°42'23.186"N	80°12'14.278"W	288.9	24.51	7.46
8706	85.23	326.05	8224.01	200.44	315.55	85.7	1770412.19	440250.44	39°42'23.704"N	80°12'14.720"W	326.98	15.194	3.2
8769	85.35	325.92	8229.19	263.14	367.6	50.57	1770377.07	440302.48	39°42'24.216"N	80°12'15.175"W	371.06	7.834	0.28
8832	88.46	324	8232.59	326	419.09	14.46	1770340.96	440353.97	39°42'24.722"N	80°12'15.642"W	419.34	1.976	5.8
8896	90.98	325.66	8232.9	389.96	471.4	-2.4	1770304.1	440406.28	39°42'25.236"N	80°12'16.119"W	471.94	357.28	4.71
8958	91.51	328.13	8231.55	451.8	523.32	-56.25	1770270.25	440458.19	39°42'25.747"N	80°12'16.557"W	526.34	353.865	4.07
9021	90.95	325.59	8230.2	514.63	576.06	-90.68	1770235.82	440510.92	39°42'26.265"N	80°12'17.003"W	583.15	351.054	4.13
9084	90.83	321.06	8229.22	577.61	626.57	-128.3	1770193.21	440561.43	39°42'26.761"N	80°12'17.489"W	639.57	348.428	7.19
9147	91.02	320.75	8228.2	640.56	675.46	-168.02	1770158.49	440610.32	39°42'27.241"N	80°12'18.003"W	696.04	346.031	0.58
9211	90.86	317.55	8227.15	704.4	723.85	-209.87	1770116.64	440658.71	39°42'27.717"N	80°12'18.543"W	753.66	343.831	5.01
9273	91.29	316.67	8225.99	766.06	769.27	-252.06	1770074.46	440704.12	39°42'28.162"N	80°12'19.057"W	809.51	341.858	1.58
9337	91.51	318.36	8224.43	829.74	816.45	-295.27	1770031.25	440751.3	39°42'28.625"N	80°12'19.645"W	868.2	340.118	2.66
9400	91.17	319.04	8222.95	892.55	863.77	-336.84	1769939.68	440798.62	39°42'29.089"N	80°12'20.181"W	927.12	338.696	1.21
9463	91.02	317.29	8221.75	955.31	910.7	-378.85	1769947.68	440845.54	39°42'29.550"N	80°12'20.724"W	986.35	337.413	2.79
9525	90.95	317.6	8220.68	1017.01	956.36	-420.77	1769905.75	440891.2	39°42'29.988"N	80°12'21.265"W	1044.83	336.252	0.51
9589	90.77	318.02	8219.72	1080.74	1003.77	-463.75							

11041	90.31	325.58	8208.5	2530.37	2184.35	-1305.83	1765020.75	442119.12	39°42'42.065"N	80°12'32.713"W	2544.91	329.129	5.69
11103	90.31	321.88	8208.16	2592.35	2234.33	-1342.5	1768984.08	442169.1	39°42'42.556"N	80°12'33.187"W	2606.63	329	5.97
11167	90.4	319.66	8207.77	2656.3	2283.9	-1382.97	1768943.61	442218.66	39°42'43.042"N	80°12'33.710"W	2669.98	328.804	3.47
11230	90.62	317.87	8207.21	2719.12	2331.27	-1424.49	1768902.09	442266.03	39°42'43.507"N	80°12'34.246"W	2732.04	328.574	2.86
11293	89.85	317.88	8206.95	2781.87	2378	-1466.75	1768859.84	442312.76	39°42'43.966"N	80°12'34.792"W	2793.97	328.334	1.22
11356	90.68	319.34	8206.66	2844.68	2425.26	-1508.4	1768818.19	442360.02	39°42'44.430"N	80°12'35.329"W	2856.03	328.12	2.67
11419	90.4	320.94	8206.06	2907.6	2473.62	-1548.78	1768777.32	442408.37	39°42'44.904"N	80°12'35.851"W	2918.48	327.949	2.58
11483	90.22	320.73	8205.72	2971.55	2523.24	-1589.2	1768737.4	442457.99	39°42'45.392"N	80°12'36.373"W	2981.99	327.796	0.43
11547	90.58	322.79	8205.27	3035.53	2573.5	-1628.81	1768697.79	442504.25	39°42'45.885"N	80°12'36.885"W	3045.64	327.67	3.27
11610	90.28	325.72	8204.8	3098.51	2624.63	-1665.61	1768660.99	442559.37	39°42'46.388"N	80°12'37.361"W	3108.52	327.601	4.67
11673	90.49	325.45	8204.37	3161.44	2676.6	-1701.21	1768625.39	442611.34	39°42'46.898"N	80°12'37.822"W	3171.48	327.56	0.54
11737	90.52	325.79	8203.81	3225.37	2729.42	-1737.35	1768589.26	442664.15	39°42'47.418"N	80°12'38.290"W	3235.44	327.522	0.53
11799	90	324.93	8203.53	3287.32	2780.42	-1772.59	1768554.02	442715.16	39°42'47.919"N	80°12'38.746"W	3297.4	327.481	1.62
11862	89.85	325.93	8203.61	3350.26	2832.3	-1808.34	1768518.27	442767.03	39°42'48.429"N	80°12'39.208"W	3360.36	327.443	1.61
11925	89.54	326.43	8203.95	3413.16	2884.64	-1843.4	1768483.21	442819.37	39°42'48.943"N	80°12'39.662"W	3423.34	327.42	0.93
11988	89.63	325.78	8204.4	3476.07	2936.93	-1878.53	1768448.08	442871.65	39°42'49.457"N	80°12'40.117"W	3486.32	327.396	1.04
12051	90.12	326.99	8204.54	3538.96	2989.39	-1913.41	1768413.21	442924.11	39°42'49.973"N	80°12'40.569"W	3549.31	327.378	2.07
12114	90	328.03	8204.47	3601.76	3042.53	-1947.25	1768379.37	442977.25	39°42'50.496"N	80°12'41.007"W	3612.31	327.38	1.66
12178	90.22	327.55	8204.35	3665.54	3096.68	-1981.36	1768345.26	443031.4	39°42'51.028"N	80°12'41.449"W	3676.31	327.388	0.83
12241	90.46	325.84	8203.98	3728.4	3149.31	-2015.95	1768310.67	443084.04	39°42'51.546"N	80°12'41.897"W	3739.3	327.376	2.74
12304	90.15	323.2	8203.64	3791.37	3200.63	-2052.52	1768274.11	443135.34	39°42'52.050"N	80°12'42.370"W	3802.22	327.329	4.22
12367	90.25	319.4	8203.42	3854.33	3249.79	-2091.9	1768234.73	443184.49	39°42'52.532"N	80°12'42.879"W	3864.86	327.23	6.03
12430	90.12	316.45	8203.22	3917.08	3296.55	-2134.11	1768192.52	443231.25	39°42'52.991"N	80°12'43.424"W	3927.04	327.082	4.69
12493	90.22	316.73	8203.03	3979.68	3342.31	-2177.41	1768149.23	443277.01	39°42'53.440"N	80°12'43.943"W	3989	326.917	0.47
12556	90.22	318.38	8202.79	4042.4	3388.8	-2219.92	1768106.71	443323.5	39°42'53.896"N	80°12'44.532"W	4051.17	326.772	2.62
12619	90.74	319.86	8202.26	4105.25	3436.43	-2261.15	1768065.49	443371.12	39°42'54.364"N	80°12'45.064"W	4113.62	326.655	2.49
12683	90.92	320.71	8201.33	4169.17	3485.66	-2302.03	1768024.61	443420.35	39°42'54.847"N	80°12'45.592"W	4177.22	326.558	1.39
12746	90.74	321.55	8200.42	4232.13	3534.71	-2341.55	1767985.09	443469.4	39°42'55.329"N	80°12'46.103"W	4239.94	326.478	1.33
12809	90.71	320.99	8199.62	4295.1	3583.86	-2380.97	1767945.68	443518.54	39°42'55.811"N	80°12'46.612"W	4302.68	326.402	0.89
12871	90.71	319.39	8198.86	4357.01	3633.48	-2420.66	1767905.99	443566.16	39°42'56.279"N	80°12'47.125"W	4364.31	326.313	2.58
12935	90.46	318.31	8198.2	4420.84	3679.66	-2462.77	1767863.88	443614.34	39°42'56.757"N	80°12'47.669"W	4427.77	326.206	1.73
12997	89.97	317.97	8197.97	4482.62	3725.84	-2504.14	1767821.51	443660.52	39°42'57.205"N	80°12'48.203"W	4489.17	326.095	0.96
13060	89.82	318.83	8198.09	4545.42	3772.95	-2545.97	1767780.68	443707.62	39°42'57.667"N	80°12'48.743"W	4551.61	325.989	1.39
13123	89.51	321.02	8198.45	4608.32	3821.16	-2586.52	1767740.13	443755.82	39°42'58.140"N	80°12'49.267"W	4614.25	325.906	3.51
13187	89.42	319.5	8199.05	4672.24	3870.36	-2627.44	1767699.22	443805.03	39°42'58.623"N	80°12'49.795"W	4677.94	325.829	2.38
13250	88.86	318.16	8200	4735.07	3917.78	-2668.9	1767657.76	443852.45	39°42'59.089"N	80°12'50.331"W	4740.47	325.736	2.31
13313	89.45	319.03	8200.93	4797.87	3965.03	-2710.57	1767616.1	443899.69	39°42'59.552"N	80°12'50.869"W	4802.98	325.643	1.67
13376	89.51	320.4	8201.5	4860.76	4013.09	-2751.3	1767575.37	443947.74	39°43'00.024"N	80°12'51.395"W	4865.64	325.566	2.68
13440	89.85	323.51	8201.86	4924.75	4063.48	-2790.73	1767535.93	443998.13	39°43'00.519"N	80°12'51.904"W	4929.51	325.519	4.89
13503	89.72	323.94	8202.09	4987.74	4114.27	-2828.01	1767498.66	444048.92	39°43'01.018"N	80°12'52.387"W	4992.48	325.497	0.71
13566	90.37	324.68	8202.04	5050.72	4165.44	-2864.76	1767461.91	444100.09	39°43'01.521"N	80°12'52.871"W	5055.46	325.482	1.56
13630	90.12	324.52	8201.77	5114.7	4217.6	-2901.84	1767424.84	444152.25	39°43'02.033"N	80°12'53.342"W	5119.46	325.471	0.46
13693	90.95	324.73	8201.18	5177.67	4268.97	-2938.31	1767388.37	444203.61	39°43'02.538"N	80°12'53.814"W	5182.45	325.461	1.36
13756	90.15	325.13	8200.58	5240.63	4320.53	-2974.5	1767352.18	444255.17	39°43'03.045"N	80°12'54.282"W	5245.44	325.454	1.42
13818	90.25	323.92	8200.36	5302.61	4371.02	-3010.48	1767316.2	444305.66	39°43'03.541"N	80°12'54.748"W	5307.43	325.443	1.96
13882	89.69	322.48	8200.39	5366.6	4422.26	-3048.82	1767277.85	444356.9	39°43'04.044"N	80°12'55.244"W	5371.38	325.417	2.41
13945	89.88	321.36	8200.63	5429.59	4471.85	-3087.67	1767239.01	444406.48	39°43'04.531"N	80°12'55.746"W	5434.26	325.376	1.8
14008	90.46	321.39	8200.44	5492.56	4521.07	-3127	1767199.69	444455.7	39°43'05.015"N	80°12'56.254"W	5497.11	325.33	0.92
14071	89.48	321.98	8200.48	5555.55	4570.5	-3166.06	1767160.63	444505.13	39°43'05.500"N	80°12'56.759"W	5559.98	325.289	1.82
14134	89.51	322.17	8201.03	5618.54	4620.2	-3204.78	1767121.91	444554.82	39°43'05.988"N	80°12'57.260"W	5622.88	325.253	0.31
14197	89.6	323.44	8201.52	5681.53	4670.38	-3242.86	1767083.83	444605	39°43'06.481"N	80°12'57.752"W	5685.82	325.226	2.02
14261	89.66	324.19	8201.93	5745.52	4722.03	-3280.65	1767046.05	444656.65	39°43'06.988"N	80°12'58.241"W	5749.8	325.21	1.18
14324	89.29	326.03	8202.51	5808.48	4773.7	-3316.68	1767010.02	444708.31	39°43'07.496"N	80°12'58.707"W	5812.8	325.209	2.98
14386	89.51	325.43	8203.16	5870.4	4824.94	-3351.59	1766975.11	444759.55	39°43'08.000"N	80°12'59.159"W	5874.79	325.215	1.03
14449	89.38	324.72	8203.77	5933.36	4876.59	-3387.66	1766939.05	444811.19	39°43'08.507"N	80°12'59.626"W	5937.79	325.213	1.15
14512	88.86	325.54	8204.74	5996.31	4928.27	-3423.67	1766903.04	444862.87	39°43'09.015"N	80°13'00.092"W	6000.78	325.212	1.54
14576	88.83	324.76	8206.03	6060.25	4980.78	-3460.23	1766866.48	444915.38	39°43'09.531"N	80°13'00.565"W	6064.76	325.212	1.22
14638	88.92	323.86	8207.25	6122.22	5031.12	-3496.4	1766830.32	444965.72	39°43'10.026"N	80°13'01.033"W	6126.74	325.203	1.46
14702	89.02	326.21	8208.4	6186.16	5083.56	-3533.06	1766793.65	445018.15	39°43'10.541"N	80°13'01.508"W	6190.73	325.201	3.67
14764	89.66	326.7	8209.11	6248.05	5135.23	-3567.32	1766759.39	445069.82	39°43'11.049"N	80°13'01.952"W	6252.71	325.213	1.3
14828	91.94	327.84	8203.22	6311.86	5189.06	-3601.92	1766724.8	445123.65	39°43'11.570"N	80°13'02.400"W	6316.66	325.234	3.98
14890	91.91	327.32	8206.13	6373.62	5241.37	-3635.14	1766691.58	445175.95	39°43'12.093"N	80°13'02.830"W	6378.57	325.257	0.84
14953	92.18	325.86	8203.89	6436.46	5293.92	-3669.81	1766656.91	445228.5</					