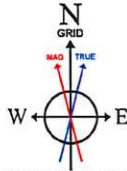


# NORTHEAST NATURAL ENERGY, LLC

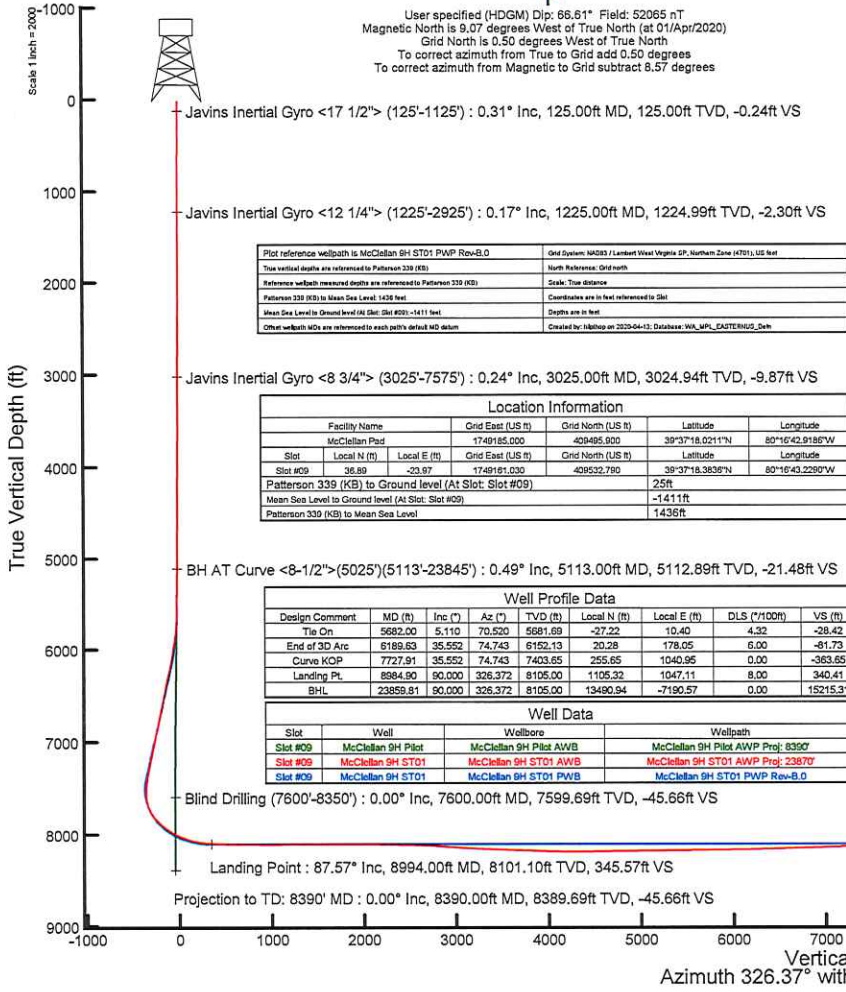
Location: Monongalia County, WV  
 Field: Monongalia  
 Facility: McClellan Pad

Slot: Slot #09  
 Well: McClellan 9H ST01  
 Wellbore: McClellan 9H ST01 PWB

API: 47-061-01820-0100  
 BH Job #: 110258773-A  
 Rig: Patterson 339  
 Duration: 4/2/20 - 4/12/20



User specified (HDGM) Dip: 68.61° Field: 52065 nT  
 Magnetic North is 9.07 degrees West of True North (at 01/Apr/2020)  
 Grid North is 0.50 degrees West of True North  
 To correct azimuth from True to Grid add 0.50 degrees  
 To correct azimuth from Magnetic to Grid subtract 8.57 degrees

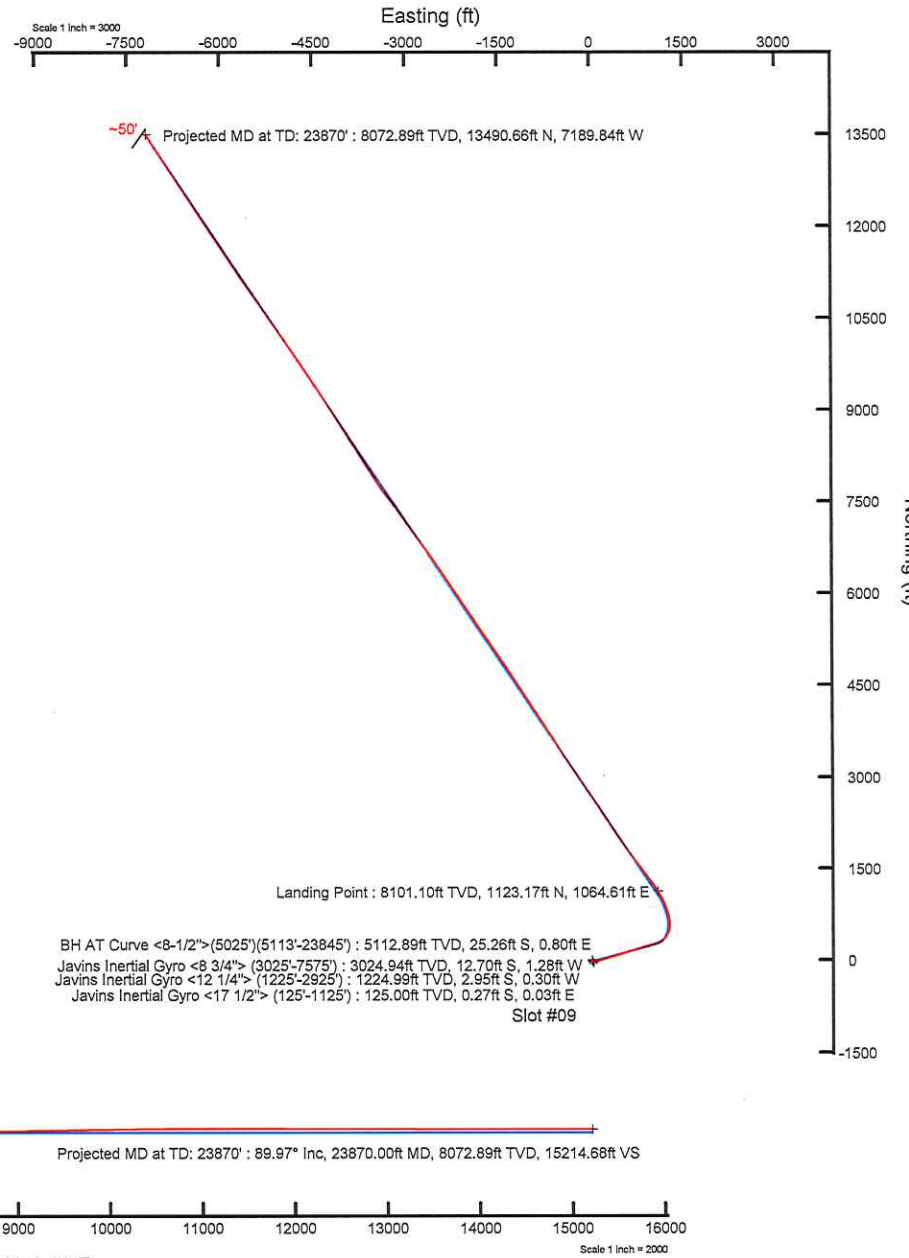


Plot reference wellpath is McClellan 9H ST01 PWB Rev-B.0	Grid System: NAD83 / Lambert West Virginia SP, Northern Zone (N711), US Nat
True vertical depths are referenced to Patterson 339 (KB)	North Reference: Grid north
Reference wellbore measured depths are referenced to Patterson 339 (KB)	Scale: True distance
Patterson 339 (KB) to Mean Sea Level: 1436 feet	Coordinates are in feet referenced to Slot
Mean Sea Level to Ground level (At Slot: Slot #09)	Depths are in feet
Other wellbore MDs are referenced to each path's default MD datum	Created by: kshoop on 2020-04-13; Database: WML_MPL_CATTERHEAD_Data

Location Information					
Facility Name	Grid East (US ft)	Grid North (US ft)	Latitude	Longitude	
McClellan Pad	1749185.000	409495.000	39°37'18.0211"N	80°16'42.9186"W	
Slot	Local N (ft)	Local E (ft)	Grid East (US ft)	Grid North (US ft)	Latitude
Slot #09	36.89	-23.97	1749181.030	409532.780	39°37'18.3838"N
Patterson 339 (KB) to Ground level (At Slot: Slot #09)			25ft		
Mean Sea Level to Ground level (At Slot: Slot #09)			-1411ft		
Patterson 339 (KB) to Mean Sea Level			1436ft		

Well Profile Data							
Design Comment	MD (ft)	Inc (")	Az (°)	TVD (ft)	Local N (ft)	Local E (ft)	DLS (*/100ft)
Tie On	5682.00	5.110	70.520	5681.69	-27.22	10.40	4.32
End of 3D Arc	6189.63	35.552	74.743	6152.13	20.28	178.05	6.00
Curve KOP	7727.91	35.552	74.743	7403.65	255.65	1040.95	0.00
Landing Pt.	8984.90	80.000	326.372	8105.00	1105.32	1047.11	8.00
BHL	23859.81	80.000	326.372	8105.00	13490.94	-7190.57	0.00

Well Data			
Slot	Well	Wellbore	Wellpath
Slot #09	McClellan 9H Pilot	McClellan 9H Pilot AHWB	McClellan 9H Pilot AWP Proj: 8390'
Slot #09	McClellan 9H ST01	McClellan 9H ST01 AHWB	McClellan 9H ST01 AWP Proj: 23870'
Slot #09	McClellan 9H ST01	McClellan 9H ST01 PWB	McClellan 9H ST01 PWP Rev-B.0



-50° Projected MD at TD: 23870' : 8072.89ft TVD, 13490.66ft N, 7189.84ft W

Landing Point : 8101.10ft TVD, 1123.17ft N, 1064.61ft E

BH AT Curve <8-1/2">(5025')(5113'-23845') : 5112.89ft TVD, 25.26ft S, 0.80ft E  
 Javins Inertial Gyro <8 3/4"> (3025'-7575') : 3024.94ft TVD, 12.70ft S, 1.28ft W  
 Javins Inertial Gyro <12 1/4"> (1225'-2925') : 1224.99ft TVD, 2.95ft S, 0.30ft W  
 Javins Inertial Gyro <17 1/2"> (125'-1125') : 125.00ft TVD, 0.27ft S, 0.03ft E  
 Slot #09

Blind Drilling (7600'-8350') : 0.00° Inc, 7600.00ft MD, 7599.69ft TVD, -45.66ft VS

Landing Point : 87.57° Inc, 8994.00ft MD, 8101.10ft TVD, 345.57ft VS

Projected MD at TD: 23870' : 89.97° Inc, 23870.00ft MD, 8072.89ft TVD, 15214.68ft VS

Projection to TD: 8390' MD : 0.00° Inc, 8390.00ft MD, 8389.69ft TVD, -45.66ft VS