

LATITUDE 39° 40' 00

80° 07' 30"

75  
+

LONGITUDE

7'5 OGIS topo location

7.5' loc	<u>1.105</u>	15' loc	<u>1.105</u>
	<u>0.74 W</u>	(calc.)	<u>2.96 W</u>

#745 (A 2531 on Equit)

Company \_\_\_\_\_

Farm \_\_\_\_\_

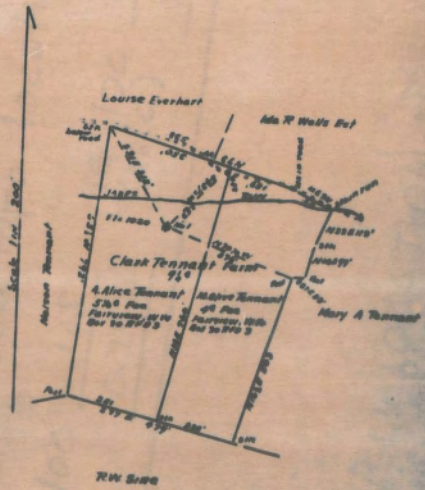
Quad Blacksville

County Monongahela

District Clay

WELL LOCATION MAP

File No. 061-60A



**MINER'S CERTIFICATE.**

I, the undersigned, hereby certify that this map is correct and shows all the information to the best of my knowledge and belief, required by the oil and gas section of the Mining Laws of West Virginia.

*Frank ...*  
Miner.

Acknowledged before me a Notary Public of Allegheny County, Pa., this 20th day of March, 1920.

*John P. ...*  
Notary Public.

JOHN P. ...  
NOTARY PUBLIC



Clay District, Monongalia County, W. Va.  
 By South Penn Oil Co., P. O. Drawer 1255, Pittsburgh, Pa.  
 On 9 $\frac{1}{2}$  acres, surface owned by Alice Tennant, R. F. D. No. 3,  
 Fairview, W. Va., and mineral rights by Alice Tennant and  
 Olive Tennant, R. F. D. No. 3, Fairview, W. Va.  
 Elevation, 1020' L.  
 10" casing, 522'; 8", 893'; 6-5/8", 1560'; 6-3/16", 1781'.  
 Packer, 2 x 4 x 16, set at 2750'.  
 Coal was encountered at 490'.  
 4 $\frac{1}{2}$  x 4" liner, 882'.  
 Abandonment reported to Dept. of Mines March 20, 1933.  
 Producing hole.

	Top.	Bottom.
Pittsburgh Coal	490	497
Salt Sand	1312	1415
Big Injun Sand (1st pay, 1883; 2nd pay, 1898')	1790	1969
50-Ft. Sand	2370	2396
30-Ft. Sand	2410	2480
Gordon Sand	2690	2711
4th Sand	2740	2770
5th Sand (gas, 2891-2899')	2888	2907
Bayard Sand	2930	2934
Total depth		2951

## WEST VIRGINIA DEPARTMENT OF MINES

OIL AND GAS DIVISION

## PRELIMINARY DATA SHEET NO. 1

File No. \_\_\_\_\_ Well No. 1SOUTH FINE OIL \_\_\_\_\_ Company, of F. O. BRUNER 1919,Pittsburgh, Pa. on the Geo. Tammant "Clash Well" tractcontaining 2-1/8 acres. Location \_\_\_\_\_Clay District, in Monongalia County, West VirginiaThe surface of the above tract is owned by Alice Tammantat R.F.D. No. 3, Fairview, W. Va. address, and the mineral rights are owned byAlice Tammant and Olive Tammant, at R.F.D. No. 3, Fairview, W. Va.

The oil and gas privileges are held under lease by the above named company, and this well is drilled under general

Authority \_\_\_\_\_ issued by the West Virginia Department of Mines, Oil and Gas Division

\_\_\_\_\_

Direction of surface at top of well, 1285' \_\_\_\_\_

The number of feet of the different sized casings used in the well:

\_\_\_\_\_ feet \_\_\_\_\_ diam. \_\_\_\_\_ Weight \_\_\_\_\_

388' \_\_\_\_\_ diam. 10" \_\_\_\_\_ also, top 1721' \_\_\_\_\_ diam. 2-2/8" \_\_\_\_\_ also, top302' \_\_\_\_\_ diam. 8 1/2" \_\_\_\_\_ also, top \_\_\_\_\_ diam. \_\_\_\_\_ also, top1300' \_\_\_\_\_ diam. 6-5/8" \_\_\_\_\_ also, top \_\_\_\_\_ diam. \_\_\_\_\_ also, top\_\_\_\_\_ pipes of 3" X 4" X 12" \_\_\_\_\_ also, set at 2730'

\_\_\_\_\_ pipes of \_\_\_\_\_ also, set at \_\_\_\_\_

\_\_\_\_\_ is casing perforated at \_\_\_\_\_ feet to \_\_\_\_\_ feet

\_\_\_\_\_ is casing perforated at \_\_\_\_\_ feet to \_\_\_\_\_ feet

Casing was cemented at 450 \_\_\_\_\_ feet thickness \_\_\_\_\_ inches, and at \_\_\_\_\_

\_\_\_\_\_ feet thickness \_\_\_\_\_ inches and at \_\_\_\_\_ feet thickness \_\_\_\_\_ inches

Liners were used as follows: (None detailed)

4 1/2" X 4" Liner - 302'.

\_\_\_\_\_

\_\_\_\_\_

March 20th, 1923.

\_\_\_\_\_

Approved \_\_\_\_\_ SOUTH FINE OIL COMPANY \_\_\_\_\_

By J. Keenan \_\_\_\_\_ Superintendent.

SOUTH PENN OIL

F.O. Draver 1888,

Pittsburgh, Pa.

Company

Address

## COMPLETION DATA SHEET

No. 2

## FORMATION RECORD

Well No. 1, - Geo. Tennant Farm - "Clark Well".

Name	Color	Character	Oil, Gas or Water	Top	Bottom	Thickness	Total Depth	Remarks
Pittsburgh	Coal			490	497			
Salt Sand				1312	1415			
Big Injun				1790				
			1st Pay	1888				
			2nd Pay	1898				
Bottom Big	Injun				1969			
Fifty Feet	Sand			2570	2366			
Thirty Feet	Sand			2410	2480			
Gordon Sand				2690	2711			
Fourth Sand				2740	2770			
Fifth Sand				2828	2907			
Bayard Sand			Gas	2891	2899			
				2930	2934			
	Total Depth						2931	

shot  
Well was not shot at \_\_\_\_\_ feet; well was shot at \_\_\_\_\_ feet.

with  
Fresh water at \_\_\_\_\_ feet; fresh water at \_\_\_\_\_ feet.

producing  
Well was \_\_\_\_\_ feet.

Shot  
March 29th, 1933.

SOUTH PENN OIL COMPANY,

Approved By J. M. [Signature] Superintendent.

Date

Name