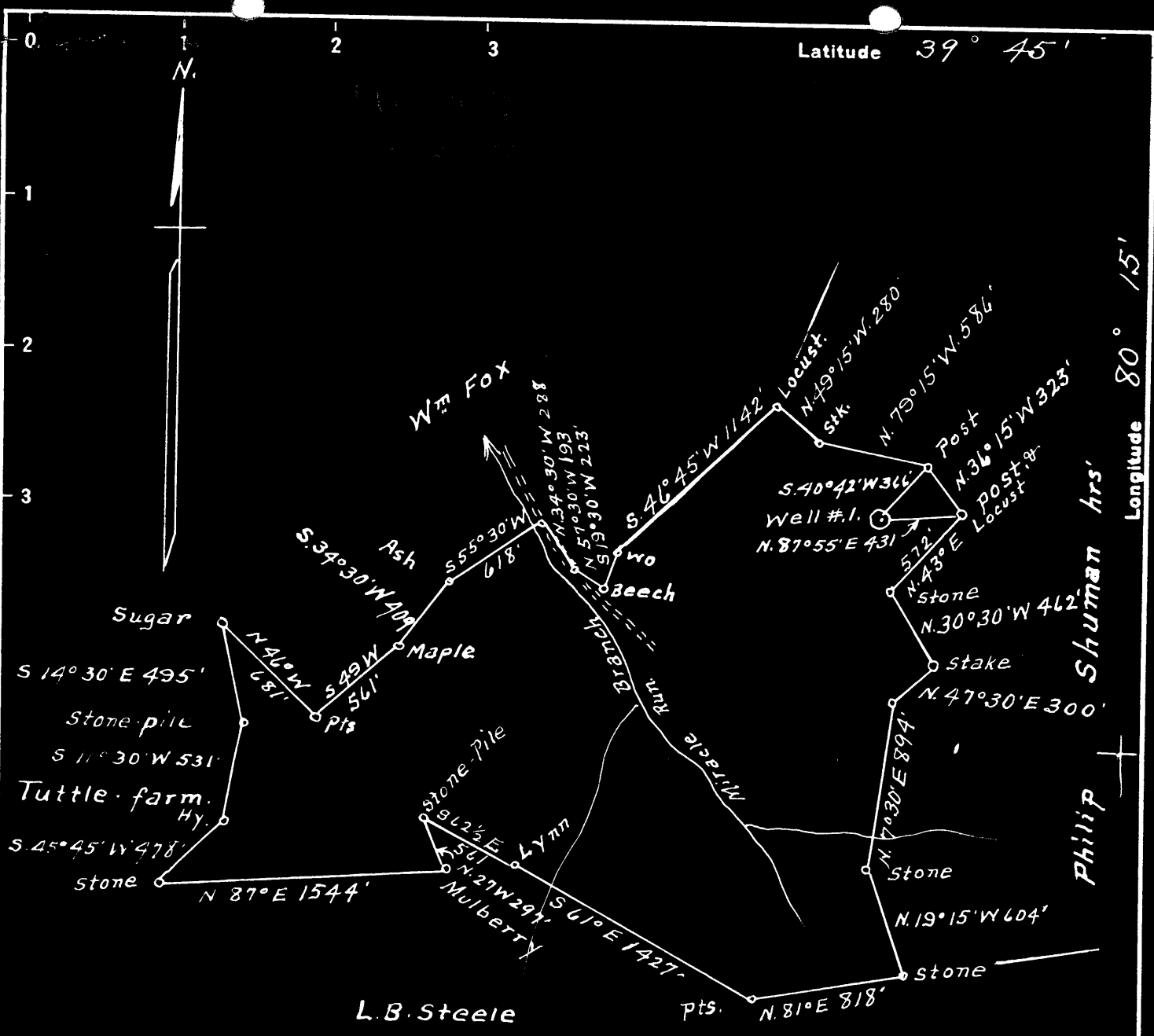


Latitude 39° 45'

Longitude 80° 15'



surface = David Shaffer
 Waynesburg, Pa.
 Coal = Wheeling Dollar Savings & Trust Co.
 Wheeling, W.Va.

4.80 S
 0.14 W

New Location
 Drill Deeper
 Abandonment

Company A.M. Snider
 Address Hundred, W.Va.
 Farm J. & A. Fox
 Tract 1 Acres 156+ Lease No. 56503
 Well (Farm) No. 1 Serial No. NE
 Elevation (Spirit Level) 1315'
 Quadrangle Mannington
 County Monongalia District Battelle
 Engineer A. L. Headley
 Engineer's Registration No. _____
 File No. _____ Drawing No. _____
 Date 10-22-1948 Scale 1" = 800'

STATE OF WEST VIRGINIA
 DEPARTMENT OF MINES
 OIL AND GAS DIVISION
 CHARLESTON

WELL LOCATION MAP
 FILE NO. MON-435-A

+ Denotes location of well on United States Topographic Maps, scale 1 to 62,500, latitude and longitude lines being represented by border lines as shown.

- Denotes one inch spaces on border line of original tracing.

Battelle District, Monongalia County, W. Va.
 By A. B. Snider, Fred Finch, Salom, W. Va.
 Abandoned under permit No.
 On 156 acres, on Miracle Run.
 Elevation, 1715' L.

Surface owned by David Shaffer, Wynchburg, Pa., and minerals by
 Wheeling Roller Savings & Trust Co., Wynchburg, Pa.

No record of date of completion, etc.

Oil, 1 1/2 bbls., 1st 24 hrs.

Salt water at 1935'.

1 1/2" casing, 65' (pulled); 10", 1362'; 8", 2009'; 6", 2270'; 5", 2307'.
 Coal was encountered at 65-663 and 1000-1010'.

Shot Sept. 5, 1913, with 16 sts., at 2398'; Nov. 29, 1915, with 20 sts.,
 at 2398'.

Oil well. Record to Dept. of Mines stopped Nov. 3, 1919.

Record to MPT from Mrs. Griffith March 17, 1949. Old File No. 485.

	Top.	Bottom.
Fairview (Wynchburg) Coal	655	- 663
Pittsburgh Coal	1000	- 1010
Little Hunker Sand	1330	- 1360
Big Hunker Sand	1440	- 1500
Gas Sand	1510	- 1670
Salt Sand (water, 1935')	1875	- 2020
Little Line	2218	- 2218
Pencil Cove	2218	- 2225
Big Line	2225	- 2285
Big Injun Sand (gas, 2301'; oil, 2396')	2285	-
Total depth		2414



STATE OF WEST VIRGINIA
DEPARTMENT OF MINES
OIL AND GAS DIVISION

485

WELL RECORD

Permit No. 435-A

Oil or Gas Well (KIND)

Company A. M. Snider
Address % Fred Finch- Salem, W.Va.
Farm J & A. Fox Acres 156
Location (waters) Miracle Run
Well No. 1 Elev. 1315
District Battelle County Monongalia
The surface of tract is owned in fee by David Shaffer
Waynesburg Address Pa.
Mineral rights are owned by Wheeling Dellar Savings
& Trust Co. Address Waynesburgh, Pa.
Drilling commenced No Record
Drilling completed " " "
Date Shot From To
With

Casing and Tubing	Used in Drilling	Left in Well	Packers
Size			Kind of Packer
16			
13	65	Pulled	
10	1362	1362	Size of
8 1/4	2009	2009	
6 1/2	2270	2270	Depth set
5 3/16	2307	2307	
3			Perf. top
2			Perf. bottom
Liners Used			Perf. top
			Perf. bottom

Open Flow /10ths Water in _____ Inch
/10ths Merc. in _____ Inch
Volume _____ Cu. Ft.
Rock Pressure _____ lbs. _____ hrs.
Oil 15 bbls., 1st 24 hrs.
Fresh water _____ feet _____ feet
Salt water 1935 feet _____ feet

CASING CEMENTED SIZE No. Ft. Dat

COAL WAS ENCOUNTERED AT 655 FEET 96 INCHES
1000 FEET 120 INCHES FEET INCHES
FEET INCHES FEET INCHES

Formation	Color	Hard or Soft	Top	Bottom	Oil, Gas or Water	Depth Found	Remarks
Fairview Coal			655	663			
Pittsburgh Coal			1000	1010			
Little Dunkard			1330	1360			
Big Dunkard			1440	1500			
Gas Sand			1510	1630			
Salt Sand			1875	2020	Water	1935	
Little Line			2210	2218			
Pencil Cove			2218	2225			
Big Line			2285	2285			
Big Injun			2285		Gas Oil	2301 2396	
Total Depth				2414			
TORPEDO RECORD							
			9-5-1913	16Qts.			
			11-29-1915	20Qts.			
				2398'			
				2398'			

13245282107831511 22450
NOV