

LATITUDE 39° 25' 00"



LONGITUDE 81° 2' 30"

7'5 OGIS topo location

7.5' LOC	<u>0.985</u>	15' LOC	_____
	<u>0.12W</u>	(calc.)	_____

Company _____

Farm _____

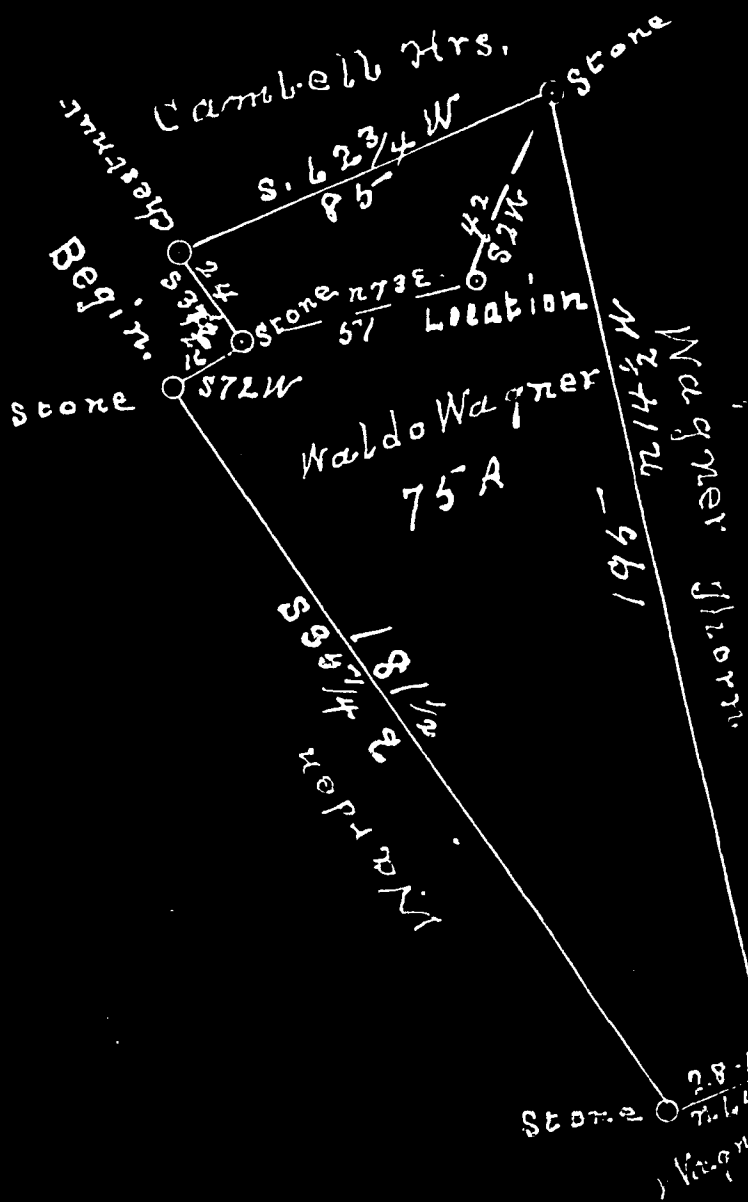
Quad BENS RUN 7 1/2'

County PLEASANTS

District UNION

WELL LOCATION MAP

File No. 073-0009



neely & McCloy oil & gas Co
 lease on Waldo Wagner farm
 located on Sugar Creek
 Union Dist. Pleasants Co W. Va.

I certify this is a true Plat
 and location of a well on
 on the Waldo Wagner farm
 located on Sugar Creek
 Union Dist. Pleasants
 Co. W. Va. for the Neely
 & McCloy oil & gas Co.

T. J. Hickel.
 Eng.

W. Va. Pleasants Co

I hereby certify that the
 above was acknowledged
 before me this 15 day
 of Sept. 1932

A. O. Hinner
 Notary Public

My commission expires
 June 11 - 1933.

No. 1111

1932

WAGNER, WALDO, NO. 1.

Pleas-9.

By Neeley & McCloy.

Union Dist.
