

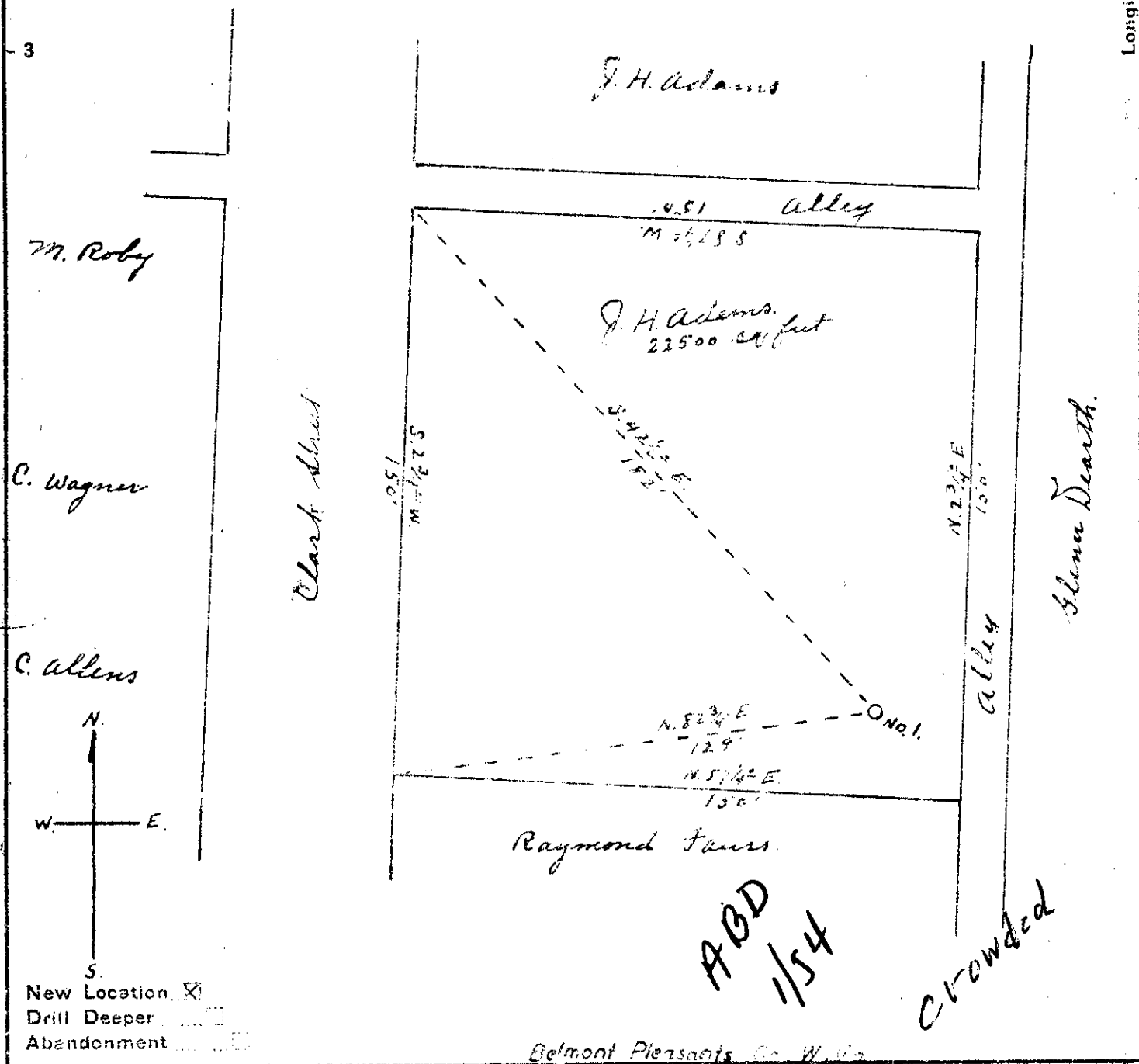
MA

Latitude 39° 25'

Longitude 81° 15'

2.66 S
0.53 W

0
1
2
3



ABD
1/54

crowded

Company MARVIN WILLIS-NO-ROY OIL CO
 Address 2407-16th St. Washington, D. C.
 Farm J. H. Adams
 Tract _____ Acres 22500 Lease No. _____
 Well (Farm) No. 1 Serial No. _____
 Elevation (Spirit Level) 626'
 Quadrangle Maristta
 County Pleasants District Grant
 Engineer Robert H. Anderson
 By One tablet, Surveyor
 Engineer's Registration No. 296
 File No. _____ Drawing No. _____
 Date Feb. 2, 1950 Scale 1" = 40'

STATE OF WEST VIRGINIA
 DEPARTMENT OF MINES
 OIL AND GAS DIVISION
 CHARLESTON

WELL LOCATION MAP
 FILE NO. PLEAS-324

+ Denotes location of well on United States Topographic Map, scale 1 to 2,500, latitude and longitude lines being represented by border lines.
 - Denotes one inch spaces on border line of original tracing.

WEST VIRGINIA DEPARTMENT OF MINES
OIL & GAS DIVISION
W E L L R E C O R D

Permit No. Pleas 324

Marietta Quad.

Company

Address

Farm

Location

Well No.

District

Surface

Mineral

Commenced

Completed

Not shot

Oil

Fresh Water

Marvin Willig and No-Roy Oil Co.

2400 16th St., Washington, D.C.

J.H. and Maud Adams A 1 1/8th

Ohio River

#1 Elev. 626'

Grant Pleasants County

J.H. and Maud Adams, Belmont, W.Va.

Same

No record

Jan. 30, 1950

15 bbls. 1st 24 hrs.

70'

Oil Well
CASING & TUBING

6 5/8 90 90

5 3/16 300 315

Casing cemented to

Coal at 305'; 360'

Soil	Gr	S	0	4
Gravel	Gr	S	4	81
Shale	Pink	S	81	85
Shale	Gr	S	85	110
Slate	Gr	S	110	115
Shale	Red	S	115	125
Sand	Gr	H	125	155
Slate	Gr	S	155	168
Slate	Blk	S	168	190
Slate	Wh	S	190	200
Sand	Gr	H	200	250
Slate	Blk	S	250	255
Bitumen	Blk	H	255	257
Shells	Gr	H	257	305
Coal	Blk	S	305	308
Shale	Gr	S	308	320
Slate	Blk	S	320	330
Shells	Gr	H	330	360
Coal	Blk	S	330	363
Slate	Blk	S	363	410
Sand	Wh	H	410	445
Shells	Gr	H	445	455
Sand	Wh	H	455	495
Slate	Blk	S	495	500
Sand	Wh	H	500	505
Sand	Gr	H	505	549

Oil 140' show

Gas 396' show

Oil and Gas 500-505 Best oil T.D.