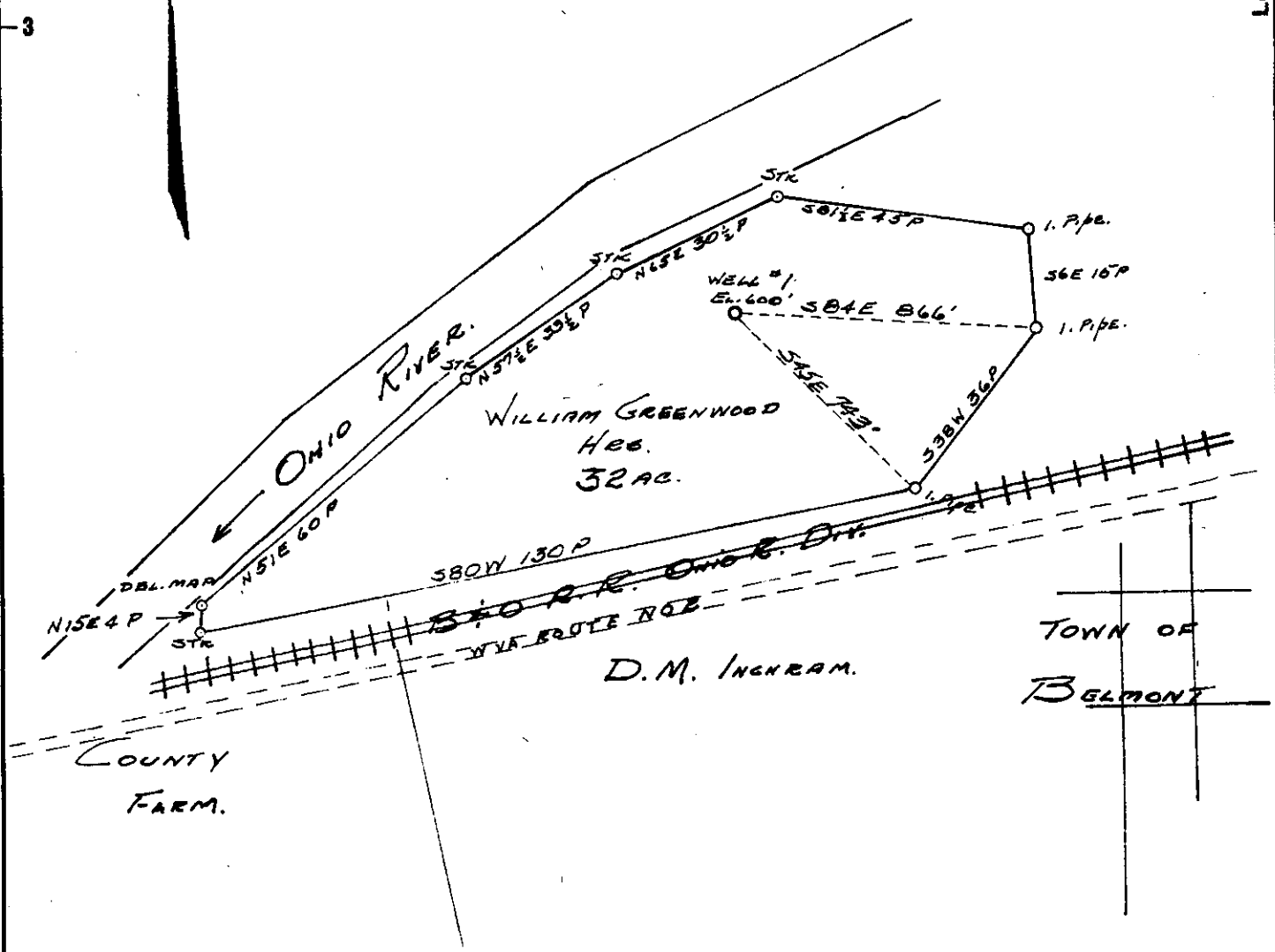


Latitude 39° 25'

2725  
2-4

2375  
0.67W

Longitude 81° 15'



- New Location
- Drill Deeper
- Abandonment

Company C. FRANK IRVIN & SON  
 Formerly E. O. WHITE  
 Address 221 MASONIC TEMPLE, ZANESVILLE, O.

Farm WILLIAM GREENWOOD, HRS.

Tract \_\_\_\_\_ Acres 32 Lease No. \_\_\_\_\_

Well (Farm) No. 1 Serial No. \_\_\_\_\_

Elevation (Spirit Level) 600'

Quadrangle MARIETTA EU

County PLEASANTS District GRANT

Engineer JOHN W. HAMILTON

Engineer's Registration No. 2274

File No. \_\_\_\_\_ Drawing No. \_\_\_\_\_

Date JUNE 10, 1960 Scale 1" = 30 P

STATE OF WEST VIRGINIA  
 DEPARTMENT OF MINES  
 OIL AND GAS DIVISION  
 CHARLESTON

**WELL LOCATION MAP**  
 FILE NO. PLEAS-410-P

+ Denotes location of well on United States Topographic Maps, scale 1 to 62,500, latitude and longitude lines being represented by border lines as shown.

- Denotes one inch spaces on border line of original tracing.

WEST VIRGINIA DEPARTMENT OF MINES  
OIL & GAS DIVISION  
W E L L R E C O R D

Permit No. Pleas 410  
Marietta Quad.

Oil Well  
CASING & TUBING

Company	E.O. White			
Address	1915 Hoge Ave., Marietta, Ohio	13	30	30
Farm	Greenwood Heirs Acres 42	10	275	275
Location		8 $\frac{1}{2}$	1093	1093
Well No.	1 Elev. 600	6 5/8	1430	1430
District	<u>Grant</u> Pleasants County	2	1800	1800

Surface  
Mineral  
Commenced April 1951  
Completed Sept. 1951  
Date shot July 9, 1951 Depth 1800' to 1835'  
with 60 qts.  
Oil Five bbls. 1st 24 hrs.

Sand & Gravel Gray	0	72	
Sand Red & White	72	240	
Lime Shell Gr	240	250	
Sand Gr	250	273	
Shale & Shell Gr	273	325	
Slate Blk	325	440	
Sand Dry	440	480	
Slate Blk	480	565	
✓ Sand Gr	565	585	Show of gas 570' Water 575'
Slate Blk	585	590	
Lime & Sand Gr	590	690	
✓ Sand Maxon Gr	690	790	
✓ Sand Dk Gr	790	890	
✓ Sand Injun Gr	890	1015	
Shale & Grit Gr	1015	1387	Top of grit 1386'
Shale Dk	1387	1560	
Shell and Shale Dk	1560	1800	
✓ Sand Gordon Gray	1800	1815	Show of oil 1815' <i>Perhaps Berca</i>
Shell and Shale Dk	1800	2200	

Plugged back to 1835 and shot with 60 qt