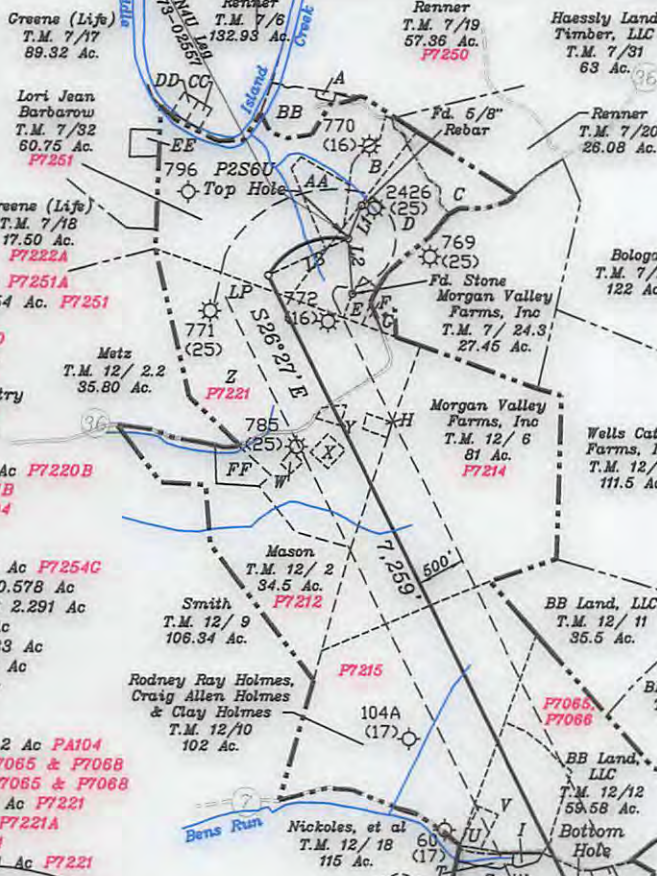
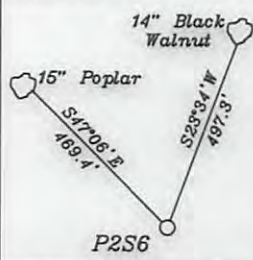
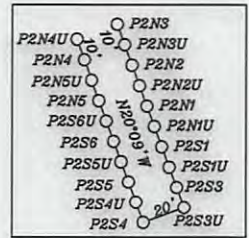


References:



NUMBER	DIRECTION	DISTANCE
L1	S22°21'W	370'
L2	N04°38'W	573'
L3	S65°10'W	912'

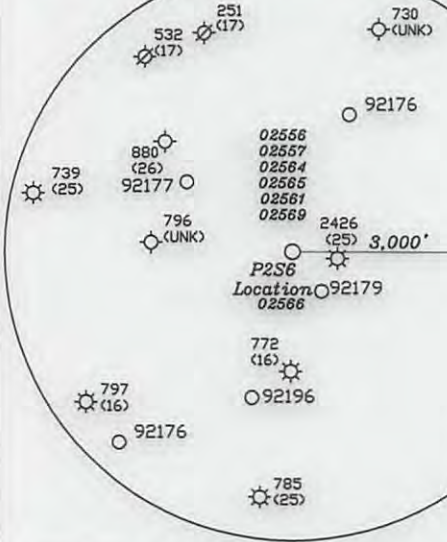
----- 500' from Bore Path
 - - - - - Final Lease Line



- A- Renner T.M. 7/32.1 2.5 Ac P7251A
- B- Barbarow T.M. 7/32.2 6.254 Ac P7251
- C- Morgan Valley Farms, Inc T.M. 7/24.2 9.13 Ac P7220
- D- Morgan Valley Farms, Inc. T.M. 7/24 27.45 Ac P7220
- E- Beech Run Church & Cemetery T.M. 7/24.1 2 Ac P7220A
- F- Bunner, et al T.M. 7/24.5 0.5 Ac P7220D
- G- Cornell T.M. 7/24.4 0.723 Ac P7220B
- H- Cemetery T.M. 12/35 P7221B
- I- Hall T.M. 12/19.1 1 Ac PA104
- J- Louther T.M. 12/29.1 1.03 Ac P7254A
- K- Louther T.M. 12/28.4 11.34 Ac P7254C
- L- Renner, et al T.M. 12/29.4 0.578 Ac
- M- Renner, et al T.M. 12/29.3 2.291 Ac
- N- Baker T.M. 12/28.3 1.102 Ac
- O- Templeton T.M. 12/28.2 2.33 Ac
- P- Murphy T.M. 12/29.2 0.177 Ac
- Q- Hamilton T.M. 12/18 42 Ac
- R- Crowe T.M. 12/28.5 21 Ac
- S- Crowe T.M. 12/28.1 3.1 Ac
- T- Hileman, et al T.M. 12/19 2 Ac PA104
- U- Wise T.M. 12/20 1.83 Ac P7065 & P7068
- V- Street T.M. 12/12.1 17 Ac P7065 & P7068
- W- Miller, et al T.M. 12/4 1.5 Ac P7221
- X- Kaess T.M. 12/39 0.64 Ac P7221A
- Y- Kaess T.M. 12/5 1 Ac P7221
- Z- Kaess T.M. 7/29&30 97.364 Ac P7221

NORTH

LONGITUDE 81-00-00 W (BH) Bottom Hole 23'
LONGITUDE 81-02-30 W (TH) Top Hole 8,360'



- AA- Wm. Munday T.M. 7/ 32.3 7 Ac P7251B
- BB- Cain T.M. 7/ 32.4 7 Ac P7251C
- CC- Parsons T.M. 7/6.2 1 Ac
- DD- Cain T.M. 7/6.1 1 Ac
- EE- Creene T.M. 7/18.1 1 Ac
- FF- Wells T.M. 12/3 10.03 Ac P7212A & B

- Notes:
1. All wells within 500' of the horizontal leg are shown on this plat based upon information taken from DEP mapping, well plats, & aerial photos.
 2. Ties to wells and corners are based on State Plane Grid North-WV North Zone NAD 83.
 3. A spring bears S47°08'W 228.6' from this location.
 4. No dwellings or buildings were found within 625' from the center of the proposed pad. No perennial stream is located within 100' of LOD. No producing trout stream located within 300' of LOD.

Top Hole
 Geo NAD 83- 39.435383 N, 81.042563 W
 UTM NAD 83(Meters)-4365094.17 N, 496337.05 E
 UTM NAD 83(Feet)-14321146.45 N, 1628399.12 E
 State Plane NAD 83(Feet)-
 344432.63 N, 1532837.26 E

Landing Point
 Geo NAD 83- 39.434292 N, 81.045471 W
 UTM NAD 83(Meters)-4364973.27 N, 496086.76 E
 UTM NAD 83(Feet)-14320749.82 N, 1627577.99 E
 State Plane NAD 83(Feet)-
 344049.634 N, 1532009.326 E

Bottom Hole
 Geo NAD 83- 39.416603 N, 81.033634 W
 UTM NAD 83(Meters)-4363009.64 N, 497104.77 E
 UTM NAD 83(Feet)-14314307.46 N, 1630917.89 E
 State Plane NAD 83(Feet)-
 337550.153 N, 1535242.310 E

(+) DENDTES LOCATION OF WELL ON UNITED STATES TOPOGRAPHIC MAPS

FILE NO. _____
 DRAWING NO. 1
 SCALE 1" = 2000'
 MINIMUM DEGREE OF ACCURACY 1 in 200
 PROVEN SOURCE OF ELEVATION GPS
submeter unit

I THE UNDERSIGNED, HEREBY CERTIFY THAT THIS PLAT IS CORRECT TO THE BEST OF MY KNOWLEDGE AND BELIEF AND SHOWS ALL THE INFORMATION REQUIRED BY LAW AND THE RULES ISSUED AND PRESCRIBED BY THE DEPARTMENT OF ENVIRONMENTAL PROTECTION.

(SIGNED) David L Jackson
 R.P.E. _____ P.S. 708



STATE OF WEST VIRGINIA
 Division of Environmental Protection
 OFFICE OF OIL AND GAS

DATE May 25, 2017
 OPERATOR'S WELL NO. P2S6
 API WELL NO. _____

WELL TYPE: OIL X GAS X LIQUID INJECTION WASTE DISPOSAL STATE 47 COUNTY 073 PERMIT 02566 MOD
 (IF "GAS") PRODUCTION X STORAGE DEEP SHALLOW X

LOCATION: ELEVATION 712.2' WATER SHED Middle Island Creek
 DISTRICT Union COUNTY Pleasants
 QUADRANGLE Bens Run 7 1/2'

SURFACE OWNER Morgan Valley Farms, Inc. ACREAGE 27.451 Ac.
 OIL & GAS ROYALTY OWNER Morgan Valley Farms, Inc. LEASE ACREAGE 08/04/2017
 LEASE NO. P7220

PROPOSED WORK: DRILL X CONVERT DRILL DEEPER REDRILL FRACTURE OR STIMULATE X PLUG OFF OLD FORMATION PERFORATE NEW FORMATION X OTHER PHYSICAL CHANGE IN WELL (SPECIFY) _____

PLUG AND ABANDON CLEAN OUT AND REPLUG
 TARGET FORMATION Marcellus ESTIMATED DEPTH TVD = 5,700'; TMD = 14,371'
 WELL OPERATOR Jay-Bee Oil & Gas, Inc. DESIGNATED AGENT Randy Broda
 ADDRESS 1720 Route 22 E, Union, NJ 07083 ADDRESS 3570 Shields Hill Rd., Cairo, WV 26337