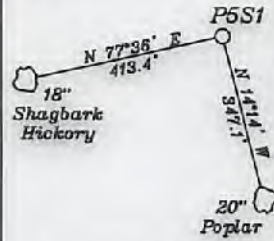
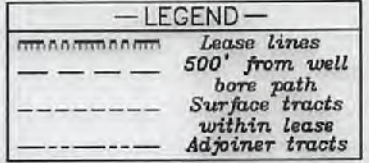


References:

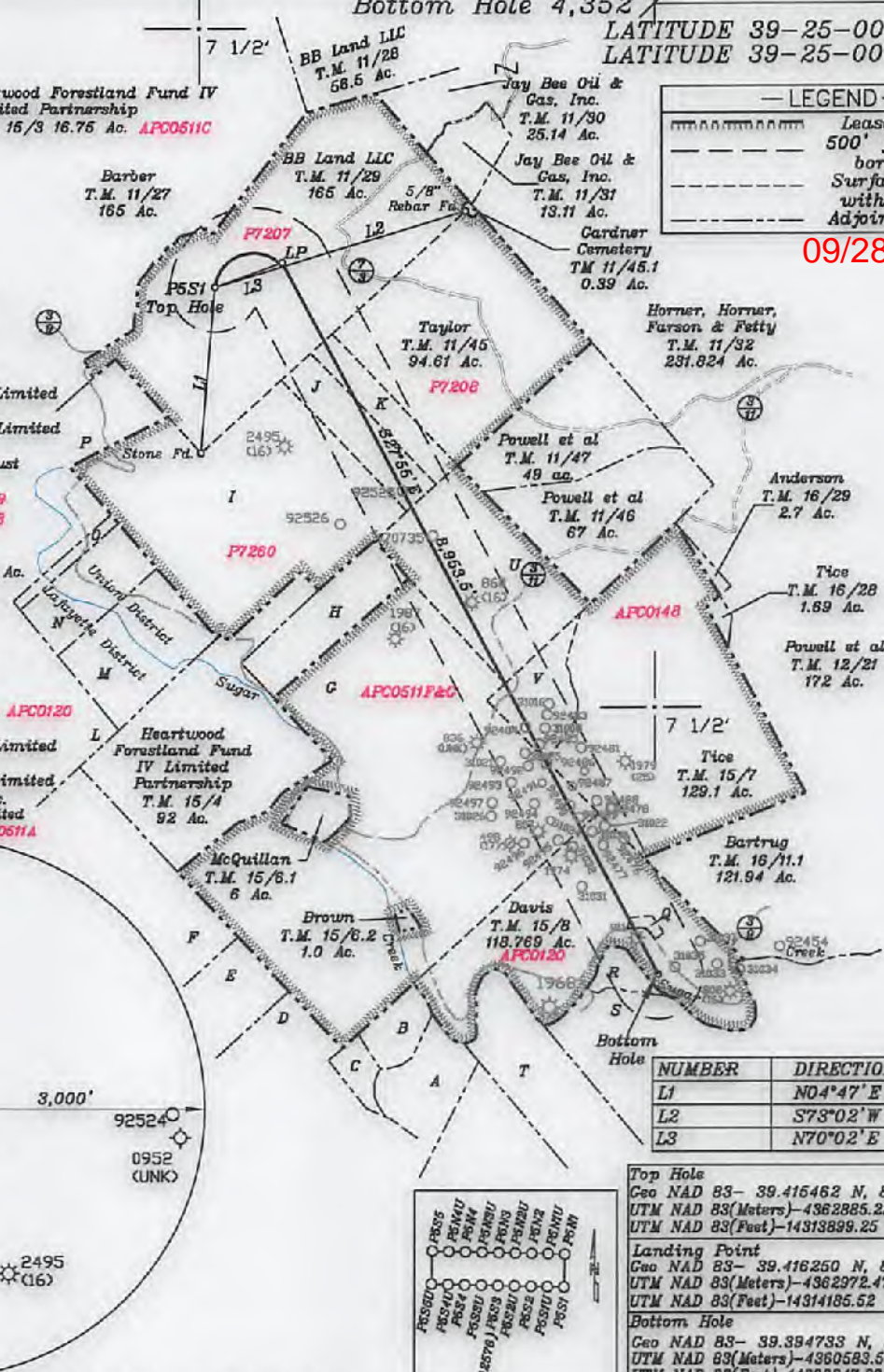


V- Heartwood Forestland Fund IV Limited Partnership
T.M. 15/3 16.75 Ac. **APC0511C**

- A- Napier T.M. 4/28/18 20.524 Ac.
- B- Napier T.M. 4/28/17 17.164 Ac.
- C- Winland T.M. 4/28/18 8.076 Ac.
- D- Hooper T.M. 4/25 23.068 Ac.
- E- Cumm T.M. 4/24 51.0 Ac.
- F- Fleming T.M. 4/15 87.5 Ac.
- G- Heartwood Forestland Fund IV Limited Partnership T.M. 15/6 266 Ac.
- H- Heartwood Forestland Fund IV Limited Partnership T.M. 15/5 50 Ac.
- I- Molavie Jo Marvuse Revocable Trust T.M. 11/41 123.27 Ac.
- J- Taylor T.M. 11/44 25.8 Ac. **F7259**
- K- Taylor T.M. 11/43 18.6 Ac. **F7258**
- L- Hall T.M. 4/7 39.5 Ac.
- M- Heartwood Forestland Fund IV Limited Partnership T.M. 15/2 27 Ac.
- N- Golden Eagles Resources LLC & Hummer Properties LLC T.M. 15/12 28.944 Ac.
- O- Hall T.M. 11/49 6.36 Ac.
- P- Golden Eagles Resources LLC & Hummer Properties LLC T.M. 11/40 62.083 Ac.
- Q- Fourqurean T.M. 15/8/1 1.231 Ac. **APC0120**
- R- Hansen T.M. 4/29 3.5 Ac.
- S- Heartwood Forestland Fund IV Limited Partnership T.M. 4/51 114 Ac.
- T- Heartwood Forestland Fund IV Limited Partnership T.M. 15/11 50.00 Ac.
- U- Heartwood Forestland Fund IV Limited Partnership T.M. 15/1 52.5 Ac. **APC0511A**

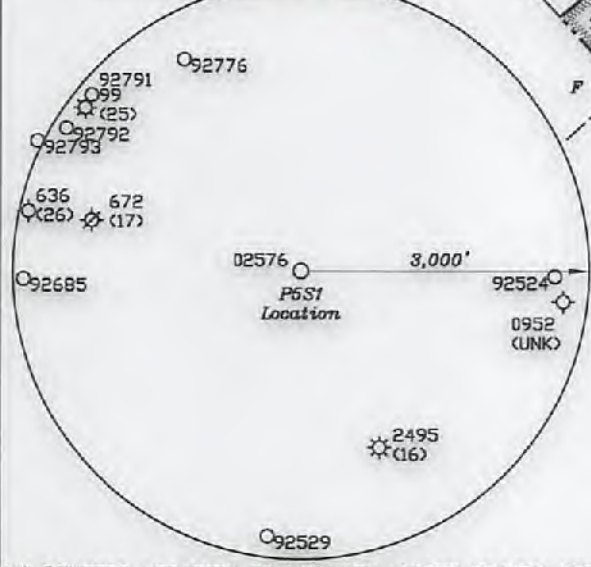


09/28/2018



NORTH

LONGITUDE 81-02-30 W Top Hole 439'
LONGITUDE 81-02-30 W Bottom Hole 7,990'



NUMBER	DIRECTION	DISTANCE
L1	N04°47' E	1,851.9'
L2	S73°02' W	2,919.6'
L3	N70°02' E	801.6'

Top Hole
Geo NAD 83- 39.415462 N, 81.075038 W
UTM NAD 83(Meters)-4362885.22 N, 493540.48 E
UTM NAD 83(Feet)-14313899.25 N, 1619224.05 E

Landing Point
Geo NAD 83- 39.416250 N, 81.072389 W
UTM NAD 83(Meters)-4362972.47 N, 493768.61 E
UTM NAD 83(Feet)-14314185.52 N, 1619972.51 E

Bottom Hole
Geo NAD 83- 39.394733 N, 81.057088 W
UTM NAD 83(Meters)-4360583.53 N, 495086.93 E
UTM NAD 83(Feet)-14306347.80 N, 1624294.43 E

(+) DENOTES LOCATION OF WELL ON UNITED STATES TOPOGRAPHIC MAPS

FILE NO. _____
DRAWING NO. 1
SCALE 1" = 2000'
MINIMUM DEGREE OF ACCURACY 1 in 200
PROVEN SOURCE OF ELEVATION GPS
submeter unit

I THE UNDERSIGNED, HEREBY CERTIFY THAT THIS PLAT IS CORRECT TO THE BEST OF MY KNOWLEDGE AND BELIEF AND SHOWS ALL THE INFORMATION REQUIRED BY LAW AND THE RULES ISSUED AND PRESCRIBED BY THE DEPARTMENT OF ENVIRONMENTAL PROTECTION.

(SIGNED) David G. Jackson
R.P.E. _____ P.S. 708



STATE OF WEST VIRGINIA
Division of Environmental Protection
OFFICE OF OIL AND GAS

DATE June 29, 2018
OPERATOR'S WELL NO. P5S1
API WELL NO. _____

WELL TYPE: OIL X GAS X LIQUID INJECTION _____ WASTE DISPOSAL _____
(IF "GAS") PRODUCTION X STORAGE _____ DEEP _____ SHALLOW X

LOCATION: ELEVATION 868.1' WATER SHED Sugar Creek of Outlet Middle Island Creek (HUC-10)
DISTRICT Union COUNTY Pleasants
QUADRANGLE Bens Run 7 1/2'

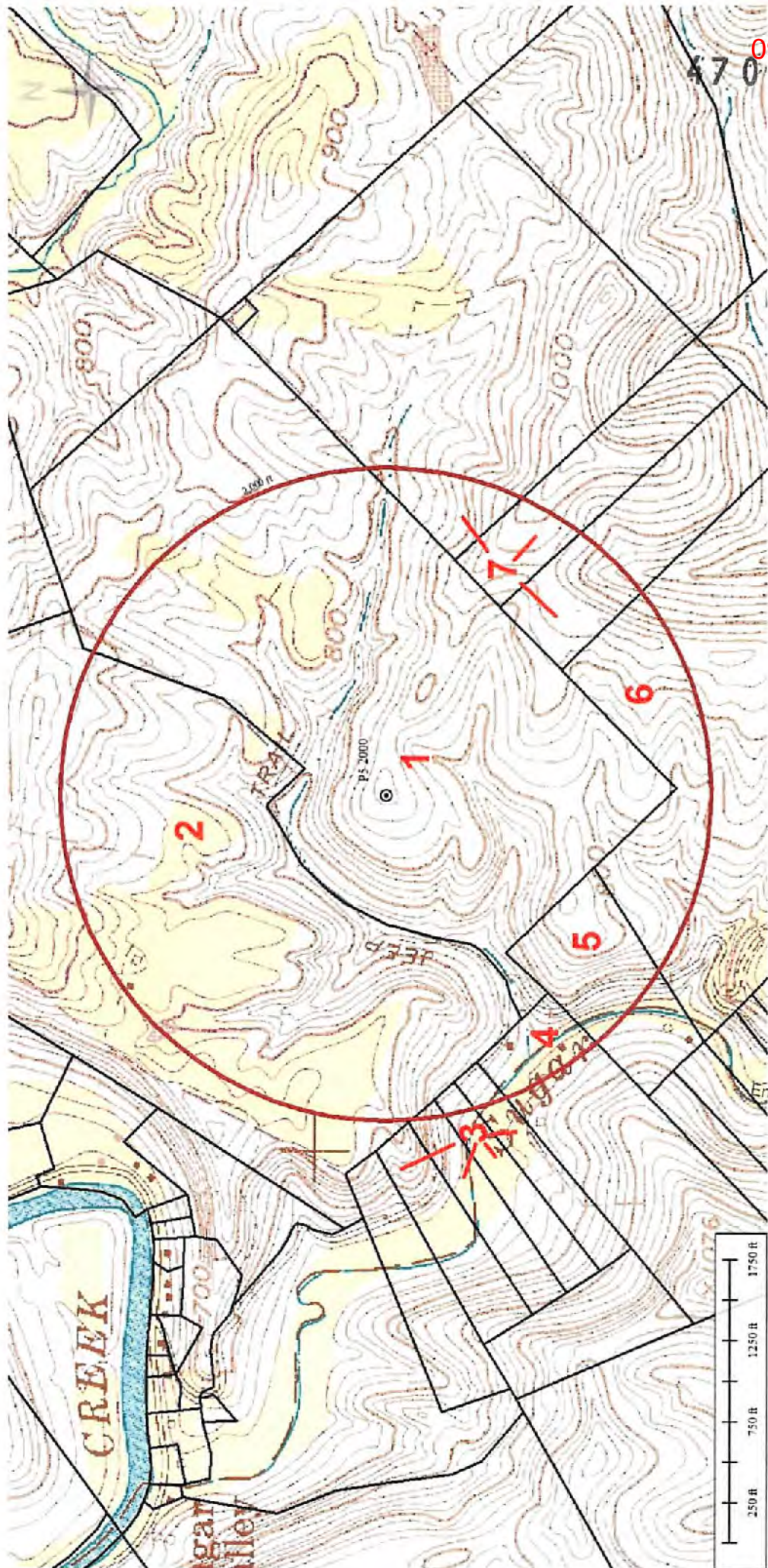
SURFACE OWNER BB Land, LLC. ACREAGE 165.0 Ac.
OIL & GAS ROYALTY OWNER Roger Wells, Howard Wells, J.R. Wells, Clint Jones, Beverly Walker, Sara Wells & Thomas Dunsford, Yvonne Shelley LEASE ACREAGE 165.0 Ac. LEASE NO. P7207

PROPOSED WORK: DRILL X CONVERT _____ DRILL DEEPER _____ REDRILL _____ FRACTURE OR STIMULATE X PLUG OFF OLD FORMATION _____ PERFORATE NEW FORMATION _____ OTHER PHYSICAL CHANGE IN WELL (SPECIFY) _____

PLUG AND ABANDON _____ CLEAN OUT AND REPLUG _____
TARGET FORMATION Marcellus ESTIMATED DEPTH TVD = 5,900'; TMD = 16,155'
WELL OPERATOR Jay-Bee Oil & Gas, Inc. DESIGNATED AGENT Randy Broda
ADDRESS 1720 Route 22 E, Union, NJ 07083 ADDRESS 3570 Shields Hill Rd., Cairo, WV 26337

09/28/2018

4707302584



RECEIVED
Office of Oil and Gas

JUL 6 2018

WV Department of
Environmental Protection