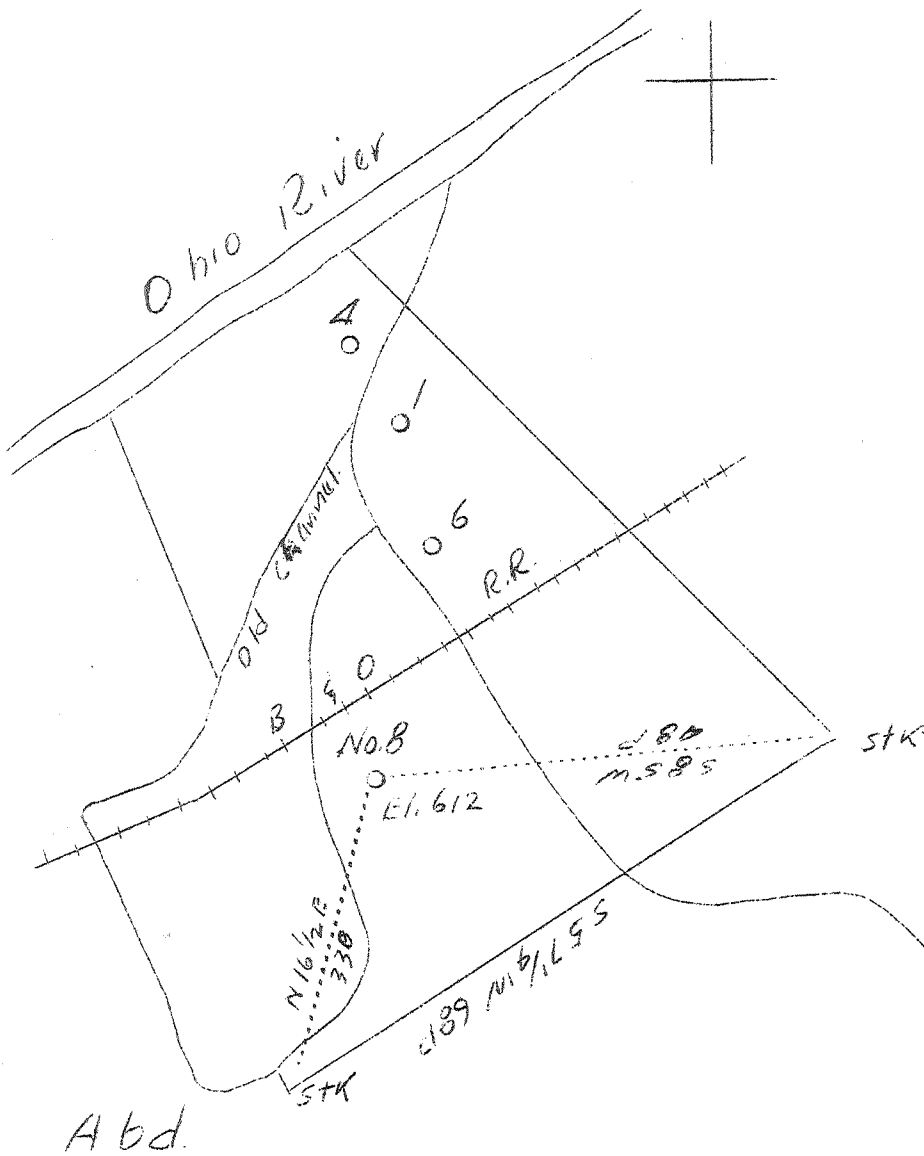


LATITUDE 39° 25'

LONGITUDE 81° 15'



3.78 W  
4.28 S

Company	H.B. Russell
Address	St. Marys, W. Va. R.D. #4
Farm	H.B. & Bula Russell
Tract	Acres 22 Lease No.
Well (Farm) No.	8 Serial No.
Elevation (Spirit Level)	612
Quadrangle	Marietta
County	Pleasants District Grant
Engineer	Jno. Triplett
Engineer's Registration No.	
File No.	Drawing No.
Date	Oct. 11, 1937 Scale 1"-20P.

STATE OF WEST VIRGINIA  
 Department of Mines  
 OIL AND GAS DIVISION  
 CHARLESTON

WELL LOCATION MAP

File No. PLEAS-100A

+ Denotes location of well on United States Topographic Maps, scale 1 to 62,500, latitude and longitude lines being represented by border lines as shown.

— Denotes one inch spaces on border line of original tracing.